

UNITED STATES  
DEPARTMENT OF THE INTERIOR  
GEOLOGICAL SURVEY

## APPLICATION FOR PERMIT TO DRILL, DEEPEN, OR PLUG BACK

## 1a. TYPE OF WORK

DRILL ☒DEEPEN ☐PLUG BACK ☐

## b. TYPE OF WELL

OIL  
WELL ☐GAS  
WELL ☒

OTHER

SINGLE  
ZONE ☒MULTIPLE  
ZONE ☐

## 2. NAME OF OPERATOR

DUGAN PRODUCTION CORP.

## 3. ADDRESS OF OPERATOR

P O Box 208, Farmington, NM 87401

## 4. LOCATION OF WELL (Report location clearly and in accordance with any State requirements.)

At surface

800' FNL - 830' FEL

At proposed prod. zone

## 14. DISTANCE IN MILES AND DIRECTION FROM NEAREST TOWN OR POST OFFICE

5 miles south of Bloomfield, NM

## 15. DISTANCE FROM PROPOSED\*

LOCATION TO NEAREST  
PROPERTY OR LEASE LINE, FT.  
(Also to nearest drlg. unit line, if any)

490'

## 16. NO. OF ACRES IN LEASE

160

17. NO. OF ACRES ASSIGNED  
TO THIS WELL

160

## 18. DISTANCE FROM PROPOSED LOCATION\*

TO NEAREST WELL, DRILLING, COMPLETED,  
OR APPLIED FOR, ON THIS LEASE, FT.

150'

## 19. PROPOSED DEPTH

1550'

## 20. ROTARY OR CABLE TOOLS

Rotary - TD

## 21. ELEVATIONS (Show whether DF, RT, GR, etc.)

5508' GL

DRILLING OPERATIONS AUTHORIZED ARE  
SUBJECT TO COMPLIANCE WITH ATTACHED

## 22. APPROX. DATE WORK WILL START\*

ASAP

## 23.

"GENERAL REQUIREMENTS"  
PROPOSED CASING AND CEMENTING PROGRAMThis action is subject to administrative  
appeal pursuant to 20 CFR 290.

SIZE OF HOLE	SIZE OF CASING	WEIGHT PER FOOT	SETTING DEPTH	
8-3/4"	7"	20#	90'	Cement to surface w/ 90 sx B
4-3/4"	2-7/8"	6.4#	1650'	75 sx lodense class B w/ 1/4# cello flake/sk followed by 50 sx class B neat

Plan to drill with as little mud as possible to test Pictured Cliffs formation using the slim hole technique. Will run IES & CDL logs and, if productive, will set 2-7/8" csg. to cover Ojo Alamo w/ cement, perforate, frac, clean out after frac, run 1 1/4" tubing, and complete well.

BOP sketch included: Regan 1000 psi

NMRB: Gas dedicated



IN ABOVE SPACE DESCRIBE PROPOSED PROGRAM: If proposal is to deepen or plug back, give data on present productive zone and proposed new productive zone. If proposal is to drill or deepen directionally, give pertinent data on subsurface locations and measured and true vertical depths. Give blowout preventer program, if any.

## 24.

SIGNED

Jerome P. McHugh Jr.

Landman

DATE July 14, 1981

(This space for Federal or State office use)

PERMIT NO.

APPROVAL DATE

APPROVED BY

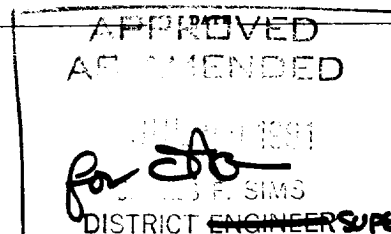
TITLE

CONDITIONS OF APPROVAL, IF ANY:

oh 3

\*See Instructions On Reverse Side

NMOCC



**NEW MEXICO OIL CONSERVATION COMMISSION  
WELL LOCATION AND ACREAGE DEDICATION PLAT**

Form C-102  
Supersedes C-128  
Effective 1-1-65

All distances must be from the outer boundaries of the Section.

Operator <b>Dugan Production Corporation</b>			Lease <b>Redfern</b>		Well No. <b>1 R</b>
Unit Letter <b>A</b>	Section <b>16</b>	Township <b>28N</b>	Range <b>11W</b>	County <b>San Juan</b>	
Actual Footage Location of Well: <div style="display: flex; justify-content: space-between;"> <span>800 feet from the North line and</span> <span>830 feet from the East line</span> </div>					
Ground Level Elev. <b>5508</b>	Producing Formation <b>Pictured Cliffs</b>	Pool <b>Fulcher Kutz PC</b>		Dedicated Acreage: <b>160</b> Acres	

1. Outline the acreage dedicated to the subject well by colored pencil or hachure marks on the plat below.
2. If more than one lease is dedicated to the well, outline each and identify the ownership thereof (both as to working interest and royalty).
3. If more than one lease of different ownership is dedicated to the well, have the interests of all owners been consolidated by communitization, unitization, force-pooling, etc?

☒ Yes    ☐ No    If answer is "yes," type of consolidation Communitization

If answer is "no," list the owners and tract descriptions which have actually been consolidated. (Use reverse side of this form if necessary.) \_\_\_\_\_

No allowable will be assigned to the well until all interests have been consolidated (by communitization, unitization, forced-pooling, or otherwise) or until a non-standard unit, eliminating such interests, has been approved by the Commission.

800'

●

830'

**NM013365**  
Dugan Product  
100%

**NMD21116**  
Dugan Product  
100%

**CERTIFICATION**

I hereby certify that the information contained herein is true and complete to the best of my knowledge and belief.

*Jerome P. McHugh Jr.*  
Name  
**Jerome P. McHugh Jr.**

Position  
**Landman**

Company  
**Dugan Production Corp.**

Date  
**6-15-81**

I hereby certify that the well location shown on this plat was plotted from field notes of actual surveys made by me or under my supervision, and that the same is true and correct to the best of my knowledge and belief.

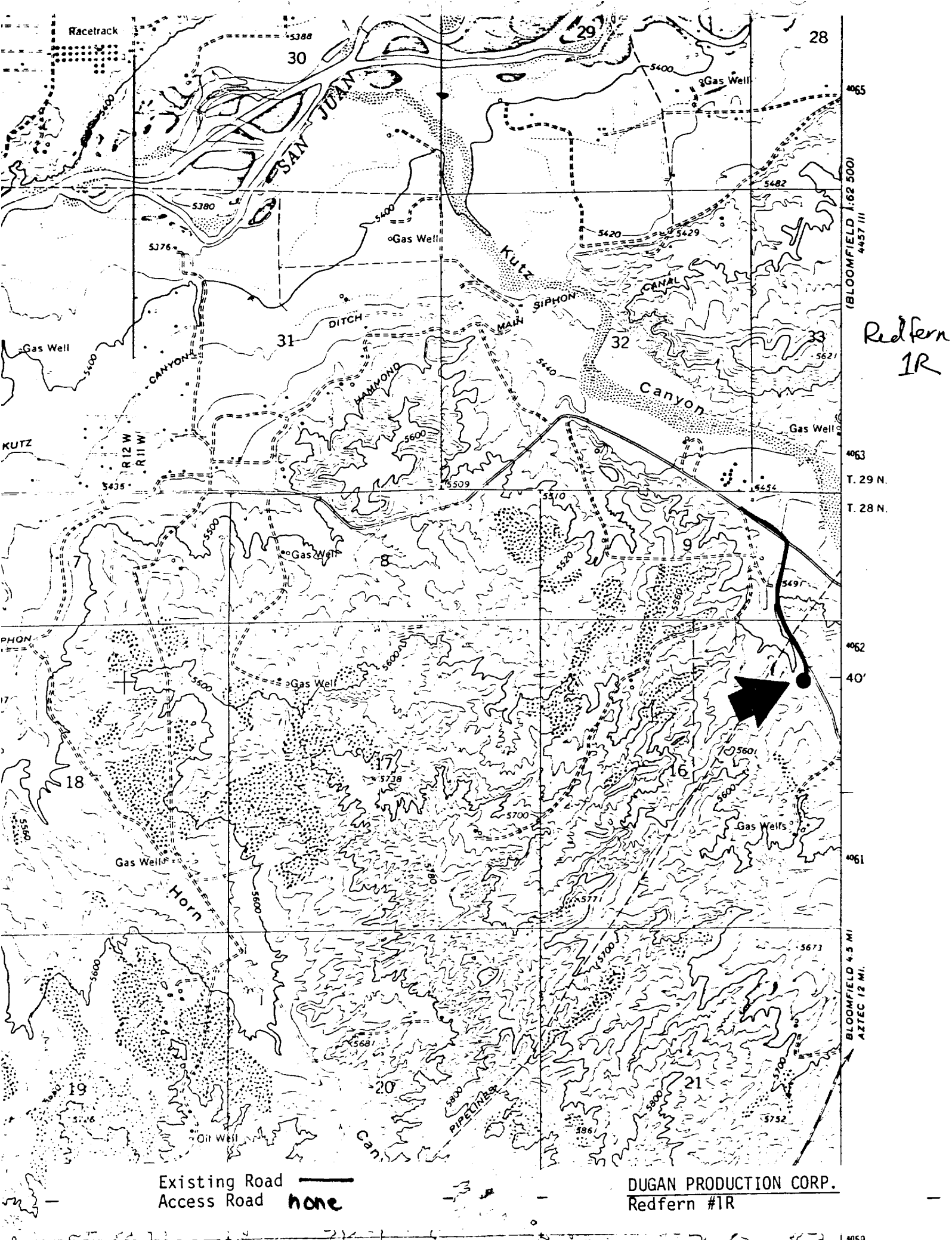
Date Surveyed  
**June 13, 1981**

Registered Professional Engineer and/or Land Surveyor

*Thomas A. Dugan*  
**Thomas A. Dugan**

Certificate No.  
**2373**

0 330 660 990 1320 1650 1980 2310 2640 2000 1500 1000 500 0



Existing Road —  
Access Road none

DUGAN PRODUCTION CORP.  
Redfern #1R

Redfern  
1R

(BLOOMFIELD 1:62 500)  
4457 III

T. 29 N.  
T. 28 N.

4065  
4063  
4062  
4061

BLOOMFIELD 4.5 MI.  
AZTEC 12 MI.