

UNITED STATES
DEPARTMENT OF THE INTERIOR
GEOLOGICAL SURVEY

APPLICATION FOR PERMIT TO DRILL, DEEPEN, OR PLUG BACK

1a. TYPE OF WORK
DRILL ☒ DEEPEN ☐ PLUG BACK ☐

b. TYPE OF WELL
OIL WELL ☒ GAS WELL ☐ OTHER ☐
SINGLE ZONE ☒ MULTIPLE ZONE ☐

2. NAME OF OPERATOR
Union Texas Petroleum Corporation

3. ADDRESS OF OPERATOR
P.O. Box 808, Farmington, New Mexico 87499

4. LOCATION OF WELL (Report location clearly and in accordance with any State requirements.)
At surface 552 ft./South line and 1945 ft./East line
At proposed prod. zone Same as above

14. DISTANCE IN MILES AND DIRECTION FROM NEAREST TOWN OR POST OFFICE
Six miles Southeast of Bloomfield, New Mexico

15. DISTANCE FROM PROPOSED LOCATION TO NEAREST PROPERTY OR LEASE LINE, FT.
(Also to nearest drg. unit line, if any)
552 ft.
552 ft.

18. DISTANCE FROM PROPOSED LOCATION TO NEAREST WELL, DRILLING, COMPLETED, OR APPLIED FOR, ON THIS LEASE, FT.
330 ft.

21. ELEVATIONS (Show whether DF, RT, GR, etc.)
5494 Gr.

23. PROPOSED CASING AND CEMENTING PROGRAM

SIZE OF HOLE	SIZE OF CASING	WEIGHT PER FOOT	SETTING DEPTH	QUANTITY OF CEMENT
18-1/2"	16" New	75.00# K-55	150 ft.	118 cu. ft. (Circulated to Surface)
13-3/4"	10-3/4" New	40.55# K-55	1400 ft.	295 cu. ft. (Circulated to Surface)
9-7/8"	7-5/8" New	26.40# K-55	4750 ft.	979 cu. ft. (Circulated)
6-3/4"	5-1/2" New	15.50# K-55	4550 to 5983 ft.	210 cu. ft. (Top of the Liner)

We desire to drill 18" conductor hole using natural mud to approximately 150 ft. Run new 16" csg. to T.D. cement w/class "B" cement. W.O.C. Drill 13-3/4" surface hole to 1400 ft. using natural mud as the circulating medium. Run new pipe to T.D. cement with class "B" cement circulated to the surface. W.O.C. Pressure test the casing to 800 PSIG for 15 min. Drill intermediate hole to approximately 4750 ft. using a starch base permaloid, non-dispersed mud as the circulating medium. Log the well. Run new pipe with a D.V. tool at approximately 2,000 ft. Cement the 1st stage with approximately 408 cu. ft. of 65/35/12. Cement 2nd stage w/approximately 571 cu. ft. of 65/35/12 cement. W.O.C. Drill out D.V. tool. Pressure test the csg. to 1500 PSIG for 10 minutes. Drill to T.D. using gas as the circulating medium. Log the well. Run pipe to T.D. with the liner hanger at approximately 4550 ft. Perf and frac the Gallup Zone. Clean the well up. Run new 2-3/8" 4.7#, J-55, EUE tbgs. to the Gallup zone. Nipple down the well head. Run pump and rods. Set pumping unit and tank. Test the well. Connect to a Gathering system.

The gas from this well has previously been dedicated to a transporter.
IN ABOVE SPACE DESCRIBE PROPOSED PROGRAM: If proposal is to deepen or plug back, give data on present productive zone and proposed new productive zone. If proposal is to drill or deepen directionally, give pertinent data on subsurface locations and measured and true vertical depths. Give blowout preventer program, if any.

SIGNED Rudy D. Motto TITLE Field Operations Manager DATE October 4, 1982
(This space for Federal or State office use)

PERMIT NO. _____ APPROVAL DATE _____
APPROVED BY _____ TITLE _____
CONDITIONS OF APPROVAL, IF ANY: _____

* 295 cu ft will not surface

5. LEASE DESIGNATION AND SERIAL NO.
SF 080724-A

6. IF INDIAN, ALLOTTEE OR TRIBE NAME

7. UNIT AGREEMENT NAME

8. FARM OR LEASE NAME

Zachry

9. WELL NO.

41

10. FIELD AND POOL, OR WILDCAT

Armenta Extension

11. SEC., T., R., M., OR BLK. AND SURVEY OR AREA

Sec. 12, T28N, R10W, N.M.P.M.

12. COUNTY OR PARISH

San Juan

13. STATE

New Mexico

17. NO. OF ACRES ASSIGNED TO THIS WELL

SW SE 40.00

20. ROTARY OR CABLE TOOLS

Rotary

22. APPROX. DATE WORK WILL START

October 18, 1982

APPROVED

AS AMENDED

DATE

NOV 02 1982

JAMES F. SIMS

DISTRICT ENGINEER

NEW MEXICO OIL CONSERVATION COMMISSION
WELL LOCATION AND ACREAGE DEDICATION PLAT

Form C-102
Supersedes C-1
Effective 1-1-65

All distances must be from the outer boundaries of the Section.

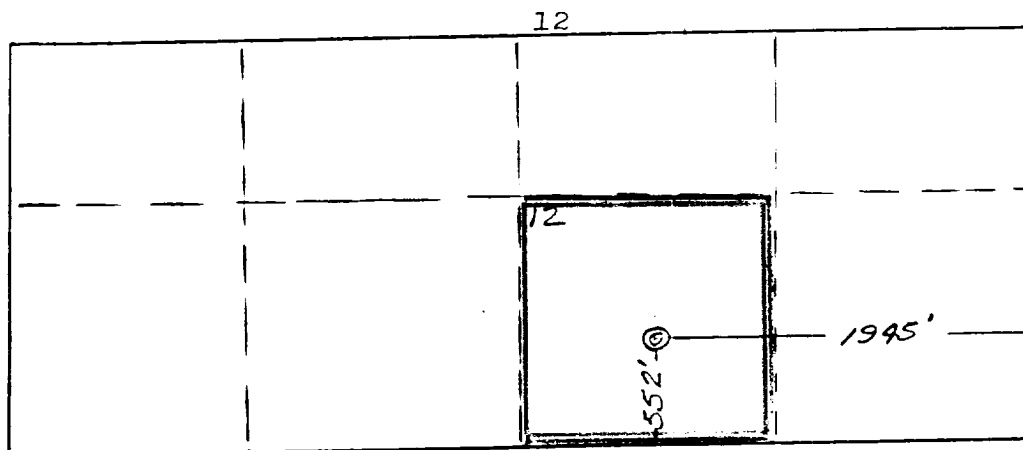
Operator UNION TEXAS PETROLEUM CORPORATION			Lease ZACHRY		Well No. 41
Well Letter 0	Section 12	Township 28 NORTH	Range 10 WEST	County SAN JUAN	
Actual Footage Location of Well:					
552 feet from the SOUTH line and		1945 feet from the EAST line			
Ground Level Elev. 5494	Producing Formation GALLUP	Pool ARMENTA EXTENSION		Dedicated Acreage: 40.00 Acres	

1. Outline the acreage dedicated to the subject well by colored pencil or hatchure marks on the plat below.
2. If more than one lease is dedicated to the well, outline each and identify the ownership thereof (both as to working interest and royalty).
3. If more than one lease of different ownership is dedicated to the well, have the interests of all owners been consolidated by communitization, unitization, force-pooling, etc?

☐ Yes ☒ No If answer is "yes," type of consolidation _____

If answer is "no," list the owners and tract descriptions which have actually been consolidated. (Use reverse side of this form if necessary.) _____

No allowable will be assigned to the well until all interests have been consolidated (by communitization, unitization, forced-pooling, or otherwise) or until a non-standard unit, eliminating such interests, has been approved by the Commission.



CERTIFICATION

I hereby certify that the information contained herein is true and complete to the best of my knowledge and belief.

Judy D. Motto
Name

Judy D. Motto
Position

Field Operations Manager
Company

Union Texas Petroleum
Date

September 10, 1982

I hereby certify that the location shown on this plat was plotted in the field notes, actual surveys made or under supervision and that same is true and correct to the best of my knowledge and belief.



Date Surveyed
September 9, 1982

Registered Professional Engineer
and/or Land Surveyor

James P. Leese
James P. Leese

Certificate No.
1463

BLOOMFIELD

NEW MEXICO.

15 MINUTE SERIES

NAVAJO DAM 12 M
TURLEY C.R.M.

UNION TEXAS PETROLEUM CORPORATION

Zachry #41

SW $\frac{1}{4}$ SE $\frac{1}{4}$, Sec. 12, T28N, R10W, N.M.P.M.,
San Juan County, New Mexico