

UNITED STATES  
DEPARTMENT OF THE INTERIOR  
GEOLOGICAL SURVEY

## APPLICATION FOR PERMIT TO DRILL, DEEPEN, OR PLUG BACK

## 1a. TYPE OF WORK

DRILL ☒DEEPEN ☐PLUG BACK ☐

## b. TYPE OF WELL

OIL  
WELL ☐GAS  
WELL ☒

OTHER

SINGLE  
ZONE ☐MULTIPLE  
ZONE ☒

## 2. NAME OF OPERATOR

Tenneco Oil Company

## 3. ADDRESS OF OPERATOR

P. O. Box 3249, Englewood, CO 80155

## 4. LOCATION OF WELL (Report location clearly and in accordance with any State requirements.\*)

At surface

1185' FSL, 2205' FEL  
At proposed prod. zone

## 14. DISTANCE IN MILES AND DIRECTION FROM NEAREST TOWN OR POST OFFICE?

10 miles SE Blanco, NM

## 15. DISTANCE FROM PROPOSED\*

LOCATION TO NEAREST

PROPERTY OR LEASE LINE, FT.

(Also to nearest drlg. unit line, if any)

1295'

## 18. DISTANCE FROM PROPOSED LOCATION\*

TO NEAREST WELL, DRILLING COMPLETED,  
OR APPLIED FOR, ON THIS LEASE, FT.

100'

## 21. ELEVATIONS (Show whether DF, RT, GR, etc.)

6215' GL

## 23.

DRILLING OPERATIONS AUTHORIZED ARE  
SUBJECT TO COMPLIANCE WITH ATTACHED  
"GENERAL REQUIREMENTS"  
PROPOSED CASING AND CEMENTING PROGRAMThis action is subject to technical and  
procedural review pursuant to 43 CFR 3165.3  
and appeal pursuant to 43 CFR 3165.4.

SIZE OF HOLE	SIZE OF CASING	WEIGHT PER FOOT	SETTING DEPTH	QUANTITY OF CEMENT
12 1/4"	9 5/8"	36.0 #	+ 280'	Circ. cmt. to surface
8 3/4"	7"	23.0 #	- 3520'	Circ. cmt. to surface
6 1/4"	4 1/2"	10.50#	- 5200'	Circ. cmt. to liner top

See attachments.

The gas is dedicated.

RECEIVED  
OCT 03 1985  
OIL CON. DIV.  
DIST. 3

IN ABOVE SPACE DESCRIBE PROPOSED PROGRAM: If proposal is to deepen or plug back, give data on present productive zone and proposed new productive zone. If proposal is to drill or deepen directionally, give pertinent data on subsurface locations and measured and true vertical depths. Give blowout preventer program, if any.

24. SIGNED Scott McKee TITLE Senior Regulatory Analyst DATE SEP 1 1985

(This space for Federal or State office use)

PERMIT NO. \_\_\_\_\_

APPROVAL DATE \_\_\_\_\_

APPROVED BY \_\_\_\_\_

TITLE \_\_\_\_\_

CONDITIONS OF APPROVAL, IF ANY:

APPROVED  
AS AMENDED  
DATEOCT 01 1985  
7s/ J. Stan McKeefor M. MILLENBACH  
AREA MANAGER

NMOCC

NEW MEXICO OIL CONSERVATION COMMISSION  
WELL LOCATION AND ACREAGE DEDICATION PLAT

Form C-102  
Supersedes C-128  
Effective 1-1-65

All distances must be from the outer boundaries of the Section.

Operator <b>TENNECO OIL COMPANY</b>			Lease <b>STOREY "C" (LS)</b>		Well No. <b>7A</b>
Unit Letter <b>0</b>	Section <b>27</b>	Township <b>28N</b>	Range <b>9W</b>	County <b>San Juan</b>	
Actual Footage Location of Well: <b>1185</b> feet from the <b>South</b> line and <b>2205</b> feet from the <b>East</b> line					
Ground Level Elev. <b>6215</b>	Producing Formation <b>Mesa Verde/Chacra</b>		Pool <b>Otero Chacra/Blanco Mesaverde</b>		Dedicated Acreage: <b>160/320 A</b> Acres

1. Outline the acreage dedicated to the subject well by colored pencil or hachure marks on the plat below.
2. If more than one lease is dedicated to the well, outline each and identify the ownership thereof (both as to working interest and royalty).
3. If more than one lease of different ownership is dedicated to the well, have the interests of all owners been consolidated by communitization, unitization, force-pooling, etc?

☐ Yes ☒ No If answer is "yes," type of consolidation \_\_\_\_\_

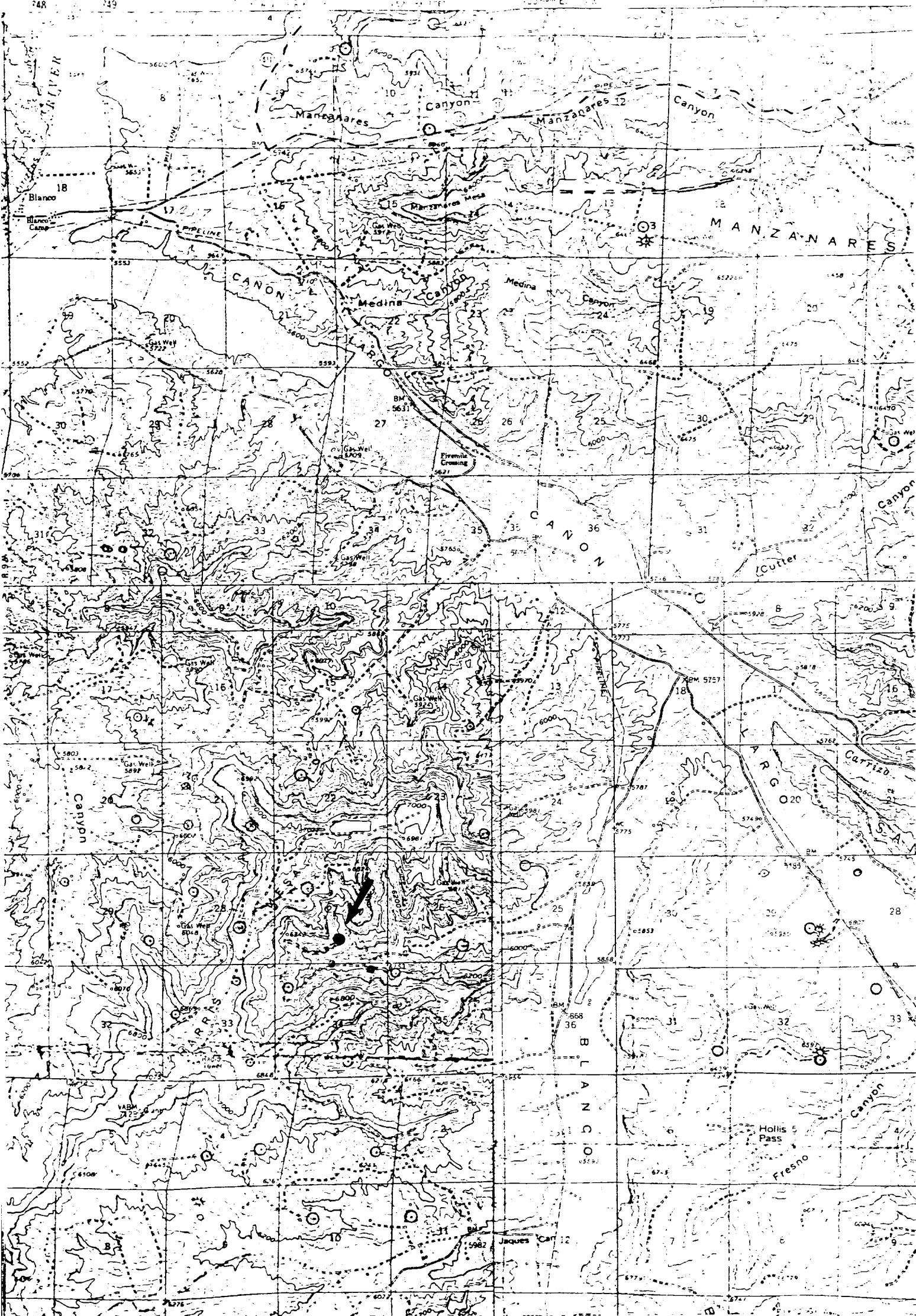
If answer is "no," list the owners and tract descriptions which have actually been consolidated. (Use reverse side of this form if necessary.) \_\_\_\_\_

No allowable will be assigned to the well until all interests have been consolidated (by communitization, unitization, forced-pooling, or otherwise) or until a non-standard unit, eliminating such interests, has been approved by the Commission.

<b>RECEIVED</b> <b>SEP 6 1985</b> <b>BUREAU OF LAND MANAGEMENT</b> <b>FARMINGTON RESOURCE AREA</b>			
<b>RECEIVED</b> <b>OCT 03 1985</b> <b>OIL CON. DIV.</b> <b>DIST. 3</b>			

Scale: 1"=1000'

<b>CERTIFICATION</b> I hereby certify that the information contained herein is true and complete to the best of my knowledge and belief. <i>Scott McKinney</i>	
Name	Scott McKinney
Position	Sr. Regulatory Analyst
Company	Tenneco Oil Co.
Date	July 30, 1985
I hereby certify that the well location shown on this plat was plotted from field notes of actual surveys made by me or under my supervision, and that the same is true and correct to the best of my knowledge and belief.	
Date Surveyed	June 24, 1985
Registered Professional Engineer and Land Surveyor	<i>Fred B. Kerr Jr.</i>
Certificate No.	3950



Vicinity Map for  
TENNECO OIL COMPANY #7A STOREY "C" (LS)  
1185'FSL 2205'FEL Sec. 27-T28N-19W  
SAN JUAN COUNTY, NEW MEXICO

MAP #1