

UNITED STATES
DEPARTMENT OF THE INTERIOR
BUREAU OF LAND MANAGEMENT

APPLICATION FOR PERMIT TO DRILL, DEEPEN, OR PLUG BACK

1a. TYPE OF WORK

DRILL ☒

DEEPEN ☐

PLUG BACK ☐

b. TYPE OF WELL

OIL
WELL ☐

GAS
WELL ☒

OTHER

SINGLE
ZONE ☒

MULTIPLE
ZONE ☐

2. NAME OF OPERATOR

Meridian Oil Inc.

3. ADDRESS OF OPERATOR

PO Box 4289, Farmington, NM 87499

4. LOCATION OF WELL (Report location clearly and in accordance with any State requirements.)*

At surface
790'S, 1450'W

At proposed prod. zone

14. DISTANCE IN MILES AND DIRECTION FROM NEAREST TOWN OR POST OFFICE*

14 miles from Blanco, NM

15. DISTANCE FROM PROPOSED*

LOCATION TO NEAREST
PROPERTY OR LEASE LINE, FT.
(Also to nearest drig. unit line, if any)

790'

16. NO. OF ACRES IN LEASE

2575.13

17. NO. OF ACRES ASSIGNED

TO THIS WELL
W 320.00

18. DISTANCE FROM PROPOSED LOCATION*

TO NEAREST WELL, DRILLING, COMPLETED,
OR APPLIED FOR, ON THIS LEASE, FT.

250'

19. PROPOSED DEPTH

2170'

20. ROTARY OR CABLE TOOLS

Rotary

21. ELEVATIONS (Show whether DF, BT, GR, etc.)

5981' GL This action is subject to technical and

23. ~~procedural review pursuant to 43 CFR 3155.3~~ AND CEMENTING PROGRAM
and appeal pursuant to 43 CFR 3155.4.

DRILLING OPERATIONS AUTHORIZED ARE
SUBJECT TO COMPLIANCE WITH ATTACHED

SIZE OF HOLE	SIZE OF CASING	WEIGHT PER FOOT	SETTING DEPTH	GENERAL REQUIREMENTS
12 1/4"	9 5/8"	32.3#	200'	125 cf. circulated
8 3/4"	7"	20.0#	2040'	248 cf circ. surface
6 1/4"	5 1/2" liner	15.5#	2170'	do not cement

The Fruitland coal formation will be completed.

A 3000 psi WP and 6000 psi test double gate preventer equipped with blind and pipe rams will be used for blow out prevention on this well.

This gas is dedicated.

The W/2 of Section 26 is dedicated to this well.

IN ABOVE SPACE DESCRIBE PROPOSED PROGRAM: If proposal is to deepen or plug back, give data on present productive zone and proposed new productive zone. If proposal is to drill or deepen directionally, give pertinent data on subsurface locations and measured and true vertical depths. Give blowout preventer program, if any.

24. SIGNED [Signature] TITLE Regulatory Affairs DATE 12-09-88

(This space for Federal or State office use)

PERMIT NO. _____

APPROVAL DATE _____

APPROVED BY _____

TITLE _____

CONDITIONS OF APPROVAL, IF ANY:

MMOCC

APPROVED [Signature]
AS AMENDED

FEB 14 1989

AREA MANAGER

*See Instructions On Reverse Side

Title 18 U.S.C. Section 1001, makes it a crime for any person knowingly and willfully to make to any department or agency of the United States any false, fictitious or fraudulent statements or representations as to any matter within its jurisdiction.

All distances must be from the outer boundaries of the Section.

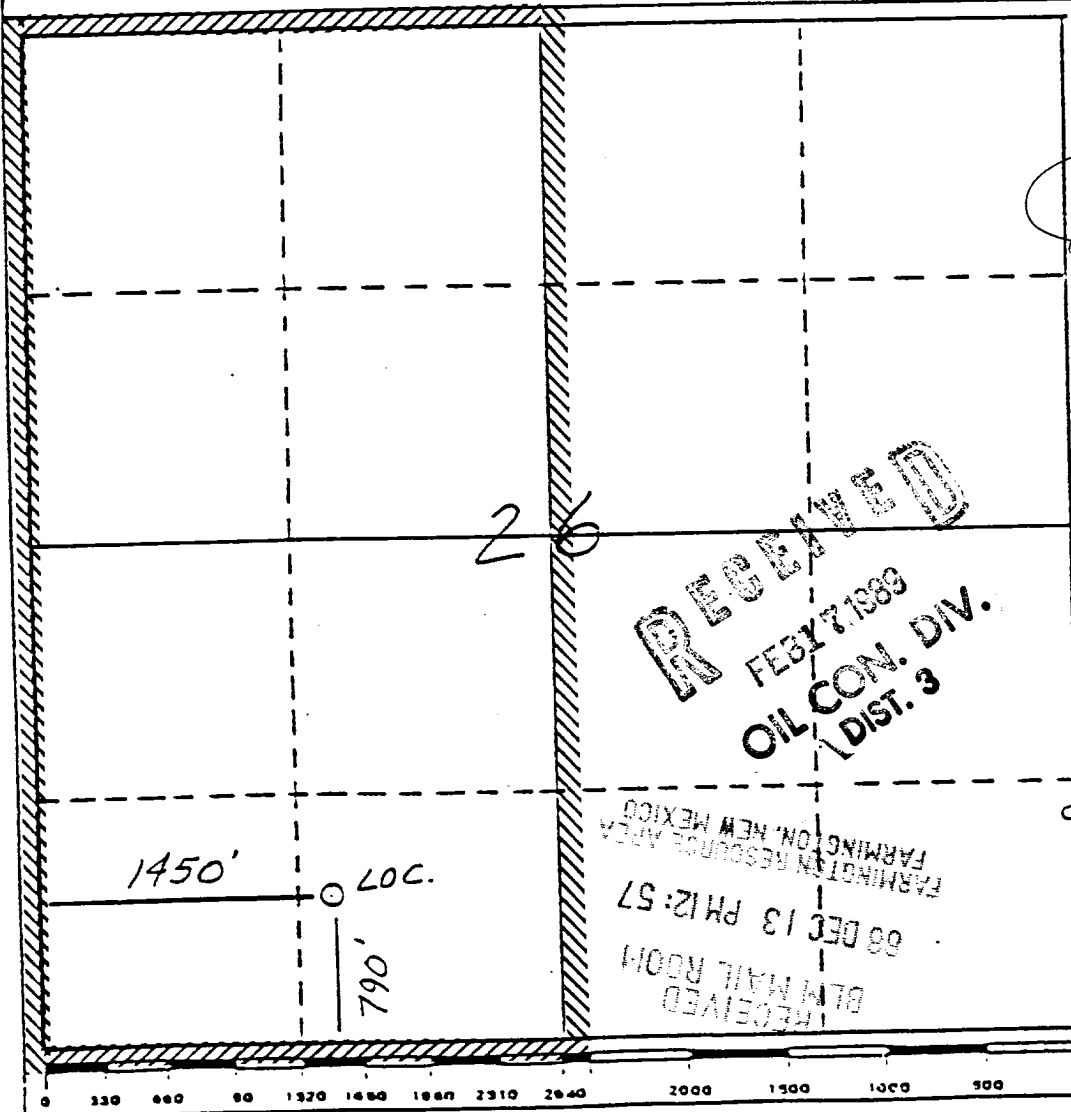
Operator Meridian Oil Inc.		Lease Lackey H (SF-077107A)		Well No. 709
Unit Letter N	Section 26	Township 28 North	Range 9 West	County San Juan
Actual Footage Location of Wells 790 feet from the South line and 1450 feet from the West line				
Ground Level Elev. 5981'	Producing Formation Fruitland Coal	Pool Basin	Dedicated Acreage: 320.00 Acre	

1. Outline the acreage dedicated to the subject well by colored pencil or hachure marks on the plat below.
2. If more than one lease is dedicated to the well, outline each and identify the ownership thereof (both as to working interest and royalty).
3. If more than one lease of different ownership is dedicated to the well, have the interests of all owners been consolidated by communitization, unitization, force-pooling, etc?

☐ Yes ☐ No If answer is "yes," type of consolidation _____

If answer is "no," list the owners and tract descriptions which have actually been consolidated. (Use reverse side of this form if necessary.) _____

No allowable will be assigned to the well until all interests have been consolidated (by communitization, unitization, force-pooling, or otherwise) or until a non-standard unit, eliminating such interests, has been approved by the Division.



CERTIFICATION

I hereby certify that the information contained herein is true and complete to the best of my knowledge and belief.

Name
Regulatory Affairs

Position
Meridian Oil Inc.

Company
12-13-88

Date

I hereby certify that the information shown on this plat was obtained from the notes of actual surveys made by me under supervision, and that the same is true and correct to the best of my knowledge and belief.

Date Surveyed

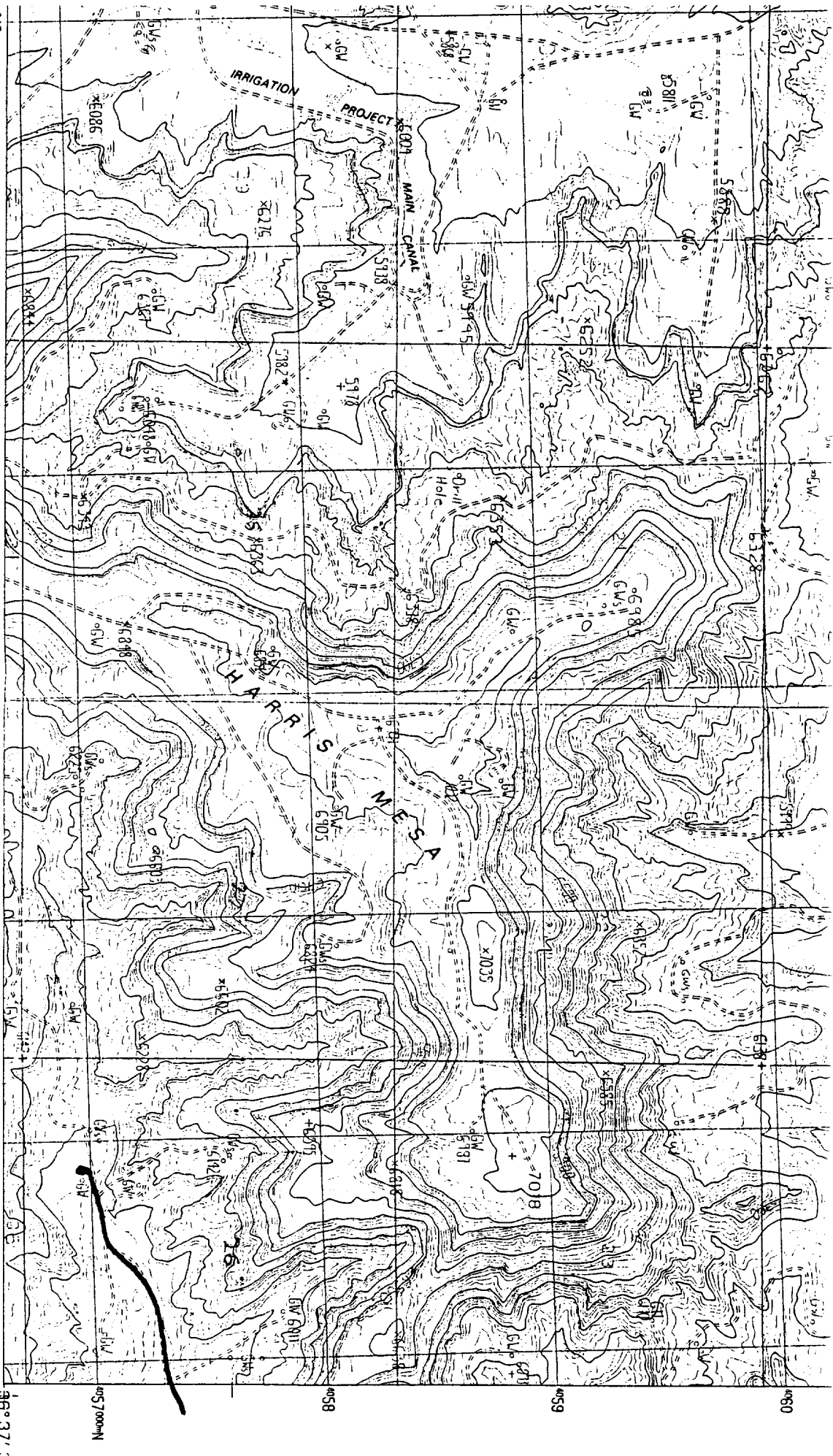
10-20-88

Registered Professional Engineer and/or Land Surveyor

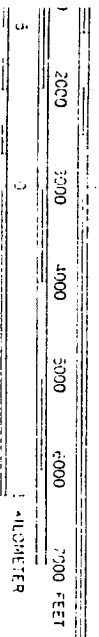
Neale C. Edwards

Certificate No.

6857



SCALE 1:24 000



CONTOUR INTERVAL 20 FEET

28/9
jk

NEW MEXICO

Lackey H # 709

ROAD LEGEND

QUADRANGLE LOCATION

Improved Road
Unimproved Road
Trail

○ Interstate Route □ U.S. Route ○ State Route

1	2	3	1. Artec
		3	2. Turley
		3	3. Archuleta
4		5	4. Bloomfield
		5	5. Cutter Canyon
		6	6. East Fork Ruiz Canyon
6	7	3	7. Florissant Peak
		8	8. Fresno Canyon