

UNITED STATES
DEPARTMENT OF THE INTERIOR
BUREAU OF LAND MANAGEMENT

APPLICATION FOR PERMIT TO DRILL, DEEPEN, OR PLUG BACK

1A. TYPE OF WORK
DRILL ☒ DEEPEN ☐ PLUG BACK ☐

B. TYPE OF WELL
OIL WELL ☐ GAS WELL ☒ OTHER ☐

2. NAME OF OPERATOR
Meridian Oil Inc.

3. ADDRESS OF OPERATOR
PO Box 4289, Farmington, NM 87499

4. LOCATION OF WELL (Report location clearly and in accordance with any State requirements.)
At surface
1555'S, 920'W 1850'W
At proposed prod. zone

14. DISTANCE IN MILES AND DIRECTION FROM NEAREST TOWN OR POST OFFICE*
15 miles from Blanco, NM

15. DISTANCE FROM PROPOSED* LOCATION TO NEAREST PROPERTY OR LEASE LINE, FT. (Also to nearest drig. unit line, if any)
920'

16. NO. OF ACRES IN LEASE
1222.97

17. NO. OF ACRES ASSIGNED TO THIS WELL
320.00

18. DISTANCE FROM PROPOSED LOCATION* TO NEAREST WELL, DRILLING, COMPLETED, OR APPLIED FOR, ON THIS LEASE, FT.
50'

19. PROPOSED DEPTH
3191'

20. ROTARY OR CABLE TOOLS
Rotary

21. ELEVATIONS (Show whether DF, RT, GR, etc.)
6960' GL

22. APPROX. DATE WORK WILL START*
This action is subject to technical and procedural review pursuant to 43 CFR 3165.3 and appeal pursuant to 43 CFR 3165.4.

23. PROPOSED CASING AND CEMENTING PROGRAM

SIZE OF HOLE	SIZE OF CASING	WEIGHT PER FOOT	SETTING DEPTH	
12 1/4"	9 5/8"	32.3#	200'	125 cf. circulated
8 3/4"	7"	20.0#	3065'	269 cf. circ. surface
6 1/4"	5 1/2" liner	15.5#	3191'	do not cement

The Fruitland coal formation will be completed.

A 3000 psi WP and 6000 psi test double gate preventer equipped with blind and pipe rams will be used for blow out prevention on this well.

This gas is dedicated.

The W/2 of Section 22 is dedicated to this well.

RECEIVED

SEP 28 1989

OIL CON. DIV

DIST. 3

IN ABOVE SPACE DESCRIBE PROPOSED PROGRAM: If proposal is to deepen or plug back, give data on present productive zone and proposed new productive zone. If proposal is to drill or deepen directionally, give pertinent data on subsurface locations and measured and true vertical depths. Give blowout preventer program, if any.

24. SIGNED [Signature] TITLE Regulatory Affairs DATE 01-17-89

(This space for Federal or State office use)

PERMIT NO. _____ APPROVAL DATE _____

APPROVED
AS AMENDED

APPROVED BY [Signature]
CONDITIONS OF APPROVAL, IF ANY:
holds legal or beneficial rights
or title to the land

TITLE _____

NMOCC

*See Instructions On Reverse Side

SEP 28 1989
[Signature]
AREA MANAGER

Title 18 U.S.C. Section 1001, makes it a crime for any person knowingly and willfully to make to any department or agency of the United States any false, fictitious or fraudulent statements or representations as to any matter within its jurisdiction.

All distances must be from the outer boundaries of the Section.

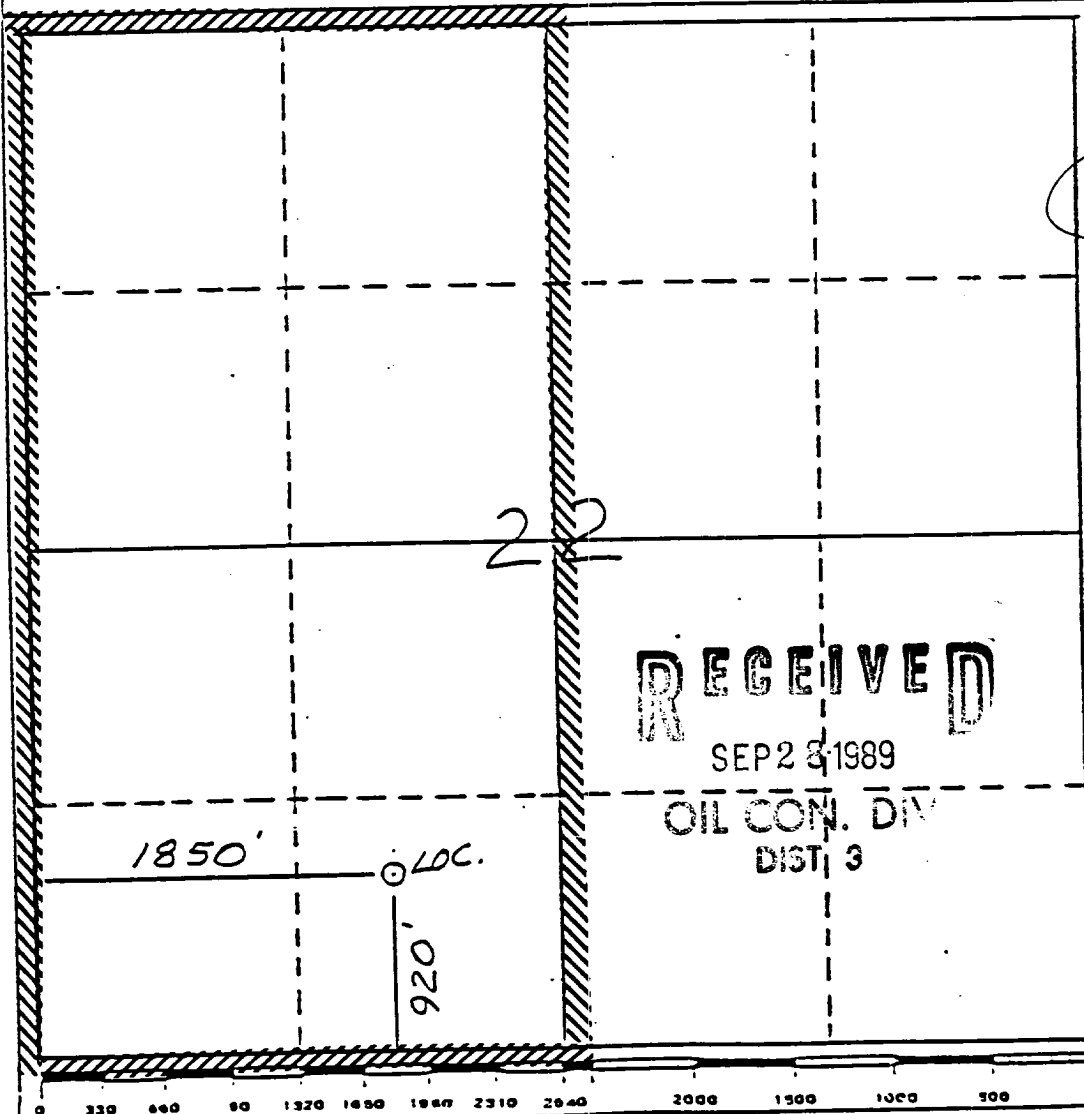
Operator Meridian Oil Inc.		Lease Hancock		Well No. 706	
Unit Letter N	Section 22	Township 28 North	Range 9 West	County San Juan	
Actual Footage Location of Well: 920 feet from the South line and 1850 feet from the West line					
Ground Level Elev. 6960	Producing Formation Basin Fruitland Coal		Pool Basin	Dedicated Acreage: 320 Ac	

1. Outline the acreage dedicated to the subject well by colored pencil or hachure marks on the plat below.
2. If more than one lease is dedicated to the well, outline each and identify the ownership thereof (both as to work interest and royalty).
3. If more than one lease of different ownership is dedicated to the well, have the interests of all owners been consolidated by communitization, unitization, force-pooling, etc?

☐ Yes ☐ No If answer is "yes," type of consolidation _____

If answer is "no," list the owners and tract descriptions which have actually been consolidated. (Use reverse side of this form if necessary.) _____

No allowable will be assigned to the well until all interests have been consolidated (by communitization, unitization, force-pooling, or otherwise) or until a non-standard unit, eliminating such interests, has been approved by the Division.



RECEIVED
SEP 23 1989
OIL CON. DIV
DIST. 3

CERTIFICATION

I hereby certify that the information contained herein is true and complete to best of my knowledge and belief.

[Signature]
Name
Regulatory Affairs
Position
Meridian Oil Inc.
Company
9-19-89
Date

I hereby certify that the well location shown on this plat was plotted from notes of location made by me under my supervision, and that the same is true and correct to the best of my knowledge and belief.

[Signature]
Date Surveyed
12-10-88
Registered Professional Engineer and/or Land Surveyor
Neale C. Edwards
Certificate No.
6857

15-7-66

