

UNITED STATES
DEPARTMENT OF THE INTERIOR
BUREAU OF LAND MANAGEMENT

SUNDRY NOTICES AND REPORTS ON WELLS

1. TYPE OF WELL GAS		5. LEASE NUMBER SF-047039-C	
2. OPERATOR MERIDIAN OIL INC.		6. IF INDIAN, ALL. OR TRIBE NAME	
3. ADDRESS & PHONE NO. OF OPERATOR P O BOX 4289 FARMINGTON, NM 87499		7. UNIT AGREEMENT NAME	
4. LOCATION OF WELL 1450'FSL 790'FWL		8. FARM OR LEASE NAME ANGEL PEAK	
		9. WELL NO. 500	
		10. FIELD, POOL, OR WILDCAT BASIN FRUITLAND COAL	
		11. SEC. T. R. M OR BLK. 2 SEC. 7 T28N R10W NMPM	
14. PERMIT NO.	15. ELEVATIONS 5746'GL	12. COUNTY SAN JUAN	13. STATE NM

16. SUBSEQUENT REPORT OF: Amended Application for Permit to Drill

17. Describe proposed or completed operations *Open. & Service Change*
Phone

Reference is made to D. J. Simmons Co.'s Application for Permit to Drill the Cap Com 7 #1 approved 09-28-90 at 1450'FSL and 790'FWL.

Meridian Oil Inc. will operate and drill this well as the Angel Peak #500 at 1450'FSL and 790'FWL of Section 7 of Township T28N and Range R10W.

Submitted for review:

- C102
- Operations Plan
- BOP Diagrams
- Location Laydown
- Cut and Fill Diagram
- Facilities Diagram

RECEIVED
NOV 08 1990
OIL CON. DIV.
DIST. 3

18. AUTHORIZED BY: *[Signature]*
REGULATORY AFFAIRS

10-9-90
DATE

NOTE: THIS FORMAT IS ISSUED IN LIEU OF US BLM FORM 3160-5.

=====

(This space for Federal or State office use)

APPROVED BY _____ TITLE _____ DATE _____
CONDITION OF APPROVAL, IF ANY: _____

NWCCD

Submit to Appropriate
District Office
State Lease - 4 copies
Fee Lease - 3 copies

State of New Mexico
Energy, Minerals and Natural Resources Department

Form C-182
Revised 1-1-89

OIL CONSERVATION DIVISION

P.O. Box 2088
Santa Fe, New Mexico 87504-2088

DISTRICT I
P.O. Box 1980, Hobbs, NM 88240

DISTRICT II
P.O. Denver DD, Arama, NM 88210

DISTRICT III
1000 Rio Brazos Rd., Aztec, NM 87410

WELL LOCATION AND ACREAGE DEDICATION PLAT

All Distances must be from the outer boundaries of the section

Operator Meridian Oil Inc.			Lease Angel Peak (SF-047039C)		Well No. 500
Unit Lease L	Section 7	Township 28 North	Range 10 West	County NMNM San Juan	
Actual Footage Location of Well: 1450 feet from the South line and 790 feet from the West line					
Ground level Elev. 5746'		Producing Formation Fruitland Coal		Pool Basin	
					Dedicated Acreage: 257.95 Acres

- Outline the acreage dedicated to the subject well by colored pencil or ink on the plat below.
- If more than one lease is dedicated to the well, outline each and identify the ownership thereof (both as to working interest and royalty).
- If more than one lease of different ownership is dedicated to the well, have the interest of all owners been consolidated by commutation, ~~unconsolidation~~, force-pooling, etc.?
☐ Yes ☐ No If answer is "yes" type of consolidation -
If answer is "no" list the owners and their descriptions which have actually been consolidated. (Use reverse side of this form if necessary.)
No allowable will be assigned to the well until all interests have been consolidated (by commutation, unconsolidation, force-pooling, or otherwise) or until a non-standard unit, eliminating such interest, has been approved by the Division.

OPERATOR CERTIFICATION

I hereby certify that the information contained herein is true and complete to the best of my knowledge and belief.

Peggy Bradford
Signature

Peggy Bradford

Printed Name
Regulatory Affairs

Position
Meridian Oil Inc.

Company
10-9-90

Date
9-5-90

SURVEYOR CERTIFICATION

I hereby certify that the well location shown on this plat was plotted from field notes, actual surveys made by me or under my supervision, and that the same is true to the best of my knowledge and belief.

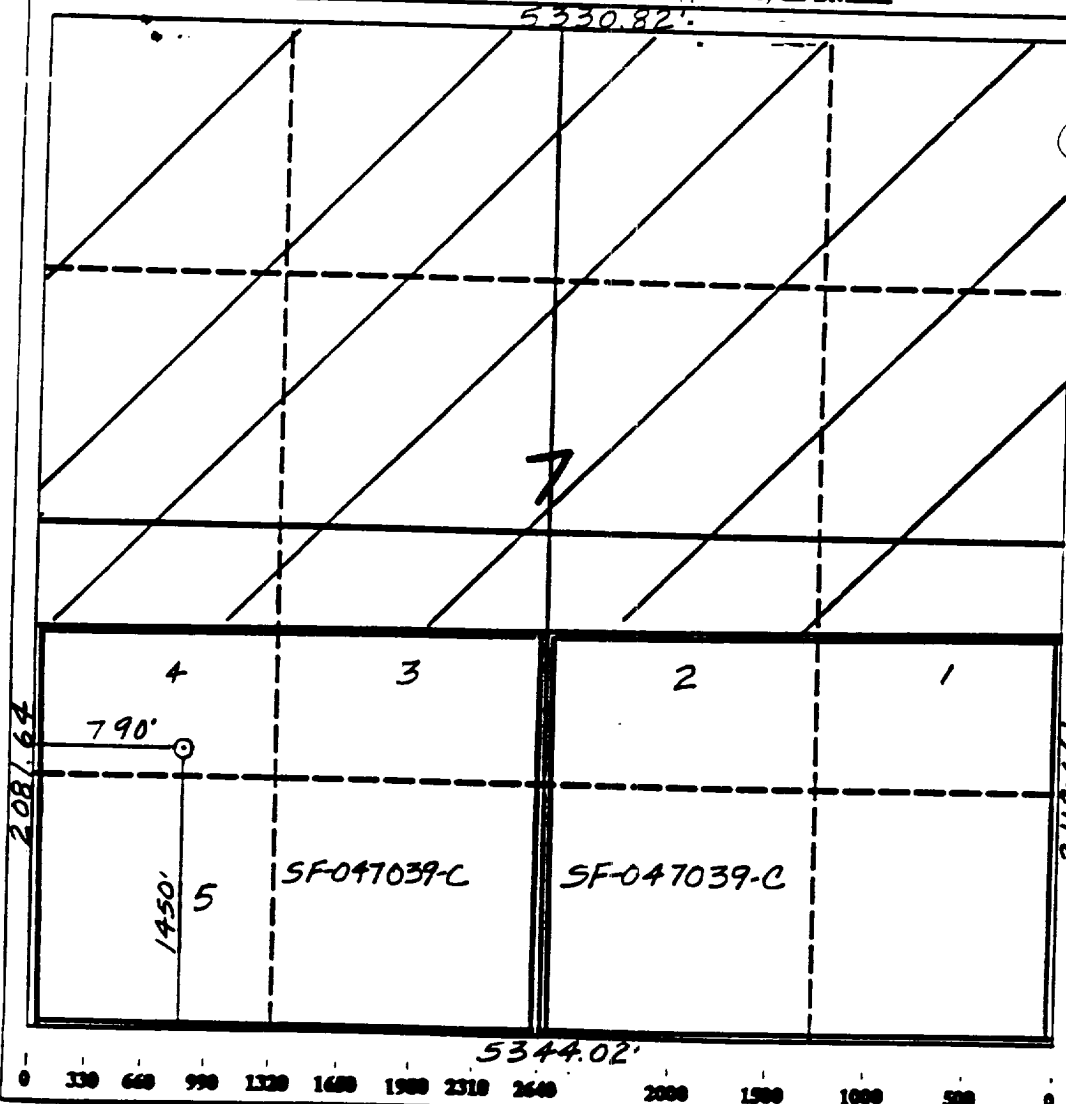
Date Surveyed
9-5-90

Neale C. Edwards
Signature

Professional Surveyor



Consent
Neale C. Edwards



Well Name: 500 ANGEL PEAK
 Sec. 7 T28N R10W
 BASIN FRUITLAND COAL

1450' FSL 790' FWL
 SAN JUAN NEW MEXICO
 Elevation 5746' GL

Formation tops: Surface- NACIMIENTO

Ojo Alamo- 702

Kirtland- 845

Fruitland- 1636

Fruitland Coal Top- 1711

Fruitland Coal Base- 1879

Pictured Cliffs- 1881

Total Depth- 1891

Logging Program: Mud logs from 1636 to total depth.

Mud Program:	Interval	Type	Weight	Visc.	Fl. Loss
	0 - 200	Spud	8.4 - 8.9	40-50	no control
	200 - 1891	Non-dispersed	8.4 - 9.5	30-60	no control

Casing Program:	Hole Size	Depth Interval	Csg. Size	Weight	Grade
	12 1/4"	0 - 200	8 5/8"	24.0#	K-55
	7 7/8"	0 - 1891	5 1/2"	15.5#	K-55
Tubing Program:		0 - 1891	2 3/8"	4.7#	J-55

Float Equipment: 8 5/8" surface casing - saw tooth guide shoe. Centralizers will be run in accordance with Onshore Order #2.

5 1/2" production casing - float shoe on bottom. Three centralizers run every other joint above shoe. Two turbolizing type centralizers - one below and one into the base of the Ojo Alamo @ 845'. Standard centralizers thereafter every fourth joint up to the base of the surface pipe.

Wellhead Equipment: 8 5/8" x 5 1/2" x 2 3/8" x 11" 3000 psi xmas tree assembly

Cementing:

8 5/8" surface casing - cement with 211 sacks of class "B" cement with 1/4# flocele/sack and 3% calcium chloride (248 cu ft. of slurry, 200% excess to circulate to surface). WOC 12 hours. Test casing to 600 psi for 30 minutes.

5 1/2" production casing - lead with 282 sacks of 65/35 class "B" poz with 6% gel, 2% calcium chloride and 1/2 cu.ft. Perlite/sack (10.3 gallons of water/sack) tail with 100 sacks of class "B" with 2% calcium chloride. 662 cu ft. of slurry, 100% excess to circulate to surface. If hole conditions permit, a 600 ft spacer will be run ahead of the cement slurry to avoid mud contamination of the cement. WOC 12 hours. If cement does not circulate to surface, a temperature log will be run after 8 hours to determine TOC.