

UNITED STATES  
DEPARTMENT OF THE INTERIOR  
BUREAU OF LAND MANAGEMENT

APPLICATION FOR PERMIT TO DRILL, DEEPEN, OR PLUG BACK

1a. TYPE OF WORK  
DRILL ☒ DEEPEN ☐ PLUG BACK ☐  
b. TYPE OF WELL  
OIL WELL ☐ GAS WELL ☒ OTHER ☐ SINGLE ZONE ☒ MULTIPLE ZONE ☐

2. NAME OF OPERATOR  
Southland Royalty Company

3. ADDRESS OF OPERATOR  
P.O. Drawer 570, Farmington, New Mexico 87499

4. LOCATION OF WELL (Report location clearly and in accordance with State requirements\*)  
At surface  
(L) 1830' FSL & 1030' FWL  
At proposed prod. zone

14. DISTANCE IN MILES AND DIRECTION FROM NEAREST TOWN OR POST OFFICE\*  
45 Miles of Blanco, New Mexico

15. DISTANCE FROM PROPOSED\*  
LOCATION TO NEAREST  
PROPERTY OR LEASE LINE, FT.  
(Also to nearest drig. unit line, if any) 1030'

18. DISTANCE FROM PROPOSED LOCATION\*  
TO NEAREST WELL, DRILLING, COMPLETED,  
OR APPLIED FOR, ON THIS LEASE, FT.

21. ELEVATIONS (Show whether DP, RT, GR, etc.)  
7062' GL

23. DRILLING OPERATIONS AUTHORIZED ARE  
SUBJECT TO COMPLIANCE WITH ATTACHED  
"GENERAL REQUIREMENTS"  
PROPOSED CASING AND CEMENTING PROGRAM

16. AREA OF LAND TO BE DRILLED  
2536.29

19. PROPOSED DEPTH  
3810'

20. ROTARY OR CABLE TOOLS  
Rotary

22. APPROX. DATE WORK WILL START\*  
November 1, 1985

This action is subject to technical and  
procedural review pursuant to 43 CFR 3165.3  
and appeal pursuant to 43 CFR 3165.4.

SIZE OF HOLE	SIZE OF CASING	WEIGHT PER FOOT	SETTING DEPTH	QUANTITY OF CEMENT
12-1/4"	New 8-5/8"	24#, K-55	200'	165.2 cu.ft. (Circulate to surface)
7-7/8"	New 5-1/2"	15.5#, K-55	3810'	347.6 cu.ft. (Cover Ojo Alamo)

Surface formation is San Jose.

Top of Ojo Alamo sand is at 3200'

Top of Pictured Cliffs sand is at 3685'

Fresh water mud will be used to drill from surface to Total Depth.

It is anticipated that an IEL, GR-CNL/CDL will be run from Total Depth to surface casing.

No abnormal pressures or poisonous gases are anticipated in this well.

It is expected that this well will be drilled before February 1, 1986.

This depends on time required for approvals, rig availability and the weather.

Gas is not dedicated.

RECEIVED

OCT 16 1985

OIL CON. DIV

DIST. 3

IN ABOVE SPACE DESCRIBE PROPOSED PROGRAM: If proposal is to deepen or plug back, give data on present productive zone and proposed new productive zone. If proposal is to drill or deepen directionally, give pertinent data on subsurface locations and measured and true vertical depths. Give blowout preventer program, if any.

24. SIGNED [Signature] TITLE Dist. Oper. Engr.

(This space for Federal or State office use)

PERMIT NO. \_\_\_\_\_ APPROVAL DATE \_\_\_\_\_

APPROVED BY \_\_\_\_\_ TITLE \_\_\_\_\_  
CONDITIONS OF APPROVAL, IF ANY:

APPROVED  
AS AMENDED

OCT 15 1985  
(SGD.) MAT MILLENBACH

M. MILLENBACH  
AREA MANAGER

\*See Instructions On Reverse Side

Title 18 U.S.C. Section 1001, makes it a crime for any person knowingly and willfully to make to any department or agency of the United States any false, fictitious or fraudulent statements or representations as to any matter within its jurisdiction.

NMOCC

NEW MEXICO OIL CONSERVATION COMMISSION  
WELL LOCATION AND ACREAGE DEDICATION PLAT

Form C-102  
Supersedes C-128  
Effective 1-1-65

All distances must be from the outer boundaries of the Section.

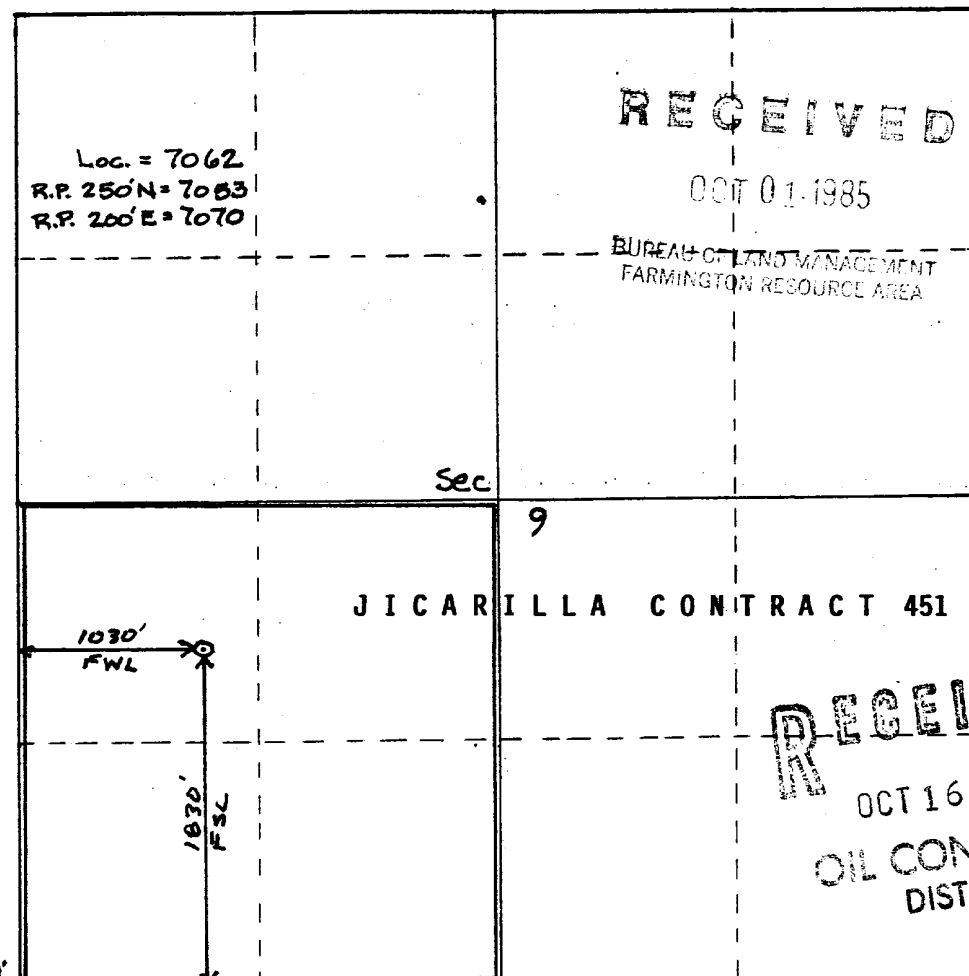
Operator <b>SOUTHLAND ROYALTY CO.</b>		Lease <b>JICARILLA 451</b>		Well No. <b>2</b>	
Unit Letter <b>L</b>	Section <b>9</b>	Township <b>29 NORTH</b>	Range <b>3 WEST</b>	County <b>RIO ARriba</b>	
Actual Footage Location of Well: <b>1830</b> feet from the <b>SOUTH</b> line and <b>1030</b> feet from the <b>WEST</b> line					
Ground Level Elev. <b>7062' GL</b>	Producing Formation <b>Fruitland</b>	Pool <b>Wildcat Undesignated</b>	Dedicated Acreage: <b>160</b> Acres		

1. Outline the acreage dedicated to the subject well by colored pencil or hachure marks on the plat below.
2. If more than one lease is dedicated to the well, outline each and identify the ownership thereof (both as to working interest and royalty).
3. If more than one lease of different ownership is dedicated to the well, have the interests of all owners been consolidated by communitization, unitization, force-pooling, etc?

☐ Yes ☐ No If answer is "yes," type of consolidation \_\_\_\_\_

If answer is "no," list the owners and tract descriptions which have actually been consolidated. (Use reverse side of this form if necessary.) \_\_\_\_\_

No allowable will be assigned to the well until all interests have been consolidated (by communitization, unitization, forced-pooling, or otherwise) or until a non-standard unit, eliminating such interests, has been approved by the Commission.



CERTIFICATION

I hereby certify that the information contained herein is true and complete to the best of my knowledge and belief.

Name  
**C. Terry Hobbs**  
Position  
**Dist. Oper. Engineer**  
Company  
**Southland Royalty Company**  
Date  
**September 27, 1985**

I hereby certify that the well location shown on this plat was plotted from field notes of actual surveys made by me or under my supervision, and that the same is true and correct to the best of my knowledge and belief.

**RECEIVED**  
OCT 16 1985  
OIL CON. DIST. 3

Date Surveyed  
**019-11-85**  
Registered Professional Engineer and Land Surveyor  
**Fred B. Kerr Jr.**  
Certificate No. **3950**

176' 176' 176' Found B.C. Scale: 1"=1000'

