

RECEIVED

Form 3160-3
(November 1983)
(formerly 9-331C)

OCT 01 1985

SUBMIT IN TRIPLICATE*
(Other instructions on
reverse side)Form approved.
Budget Bureau No. 1004-0136
Expires August 31, 1985BUREAU OF LAND MANAGEMENT
FARMINGTON REGIONAL OFFICEUNITED STATES
DEPARTMENT OF THE INTERIOR
BUREAU OF LAND MANAGEMENT

APPLICATION FOR PERMIT TO DRILL, DEEPEN, OR PLUG BACK

1a. TYPE OF WORK

DRILL ☒DEEPEN ☐PLUG BACK ☐

b. TYPE OF WELL

OIL
WELL ☐GAS
WELL ☒

OTHER

SINGLE
ZONE ☒MULTIPLE
ZONE ☐

2. NAME OF OPERATOR

Southland Royalty Company

3. ADDRESS OF OPERATOR

P.O. Drawer 570, Farmington, New Mexico 87499

4. LOCATION OF WELL (Report location clearly and in accordance with any State requirements.)*

At surface

(H) 1620' FNL & 870' FEL

At proposed prod. zone

14. DISTANCE IN MILES AND DIRECTION FROM NEAREST TOWN OR POST OFFICE*

45 Miles East of Blanco, New Mexico

15. DISTANCE FROM PROPOSED*

LOCATION TO NEAREST
PROPERTY OR LEASE LINE, FT.
(Also to nearest drlg. unit line, if any)

870'

16. NO. OF ACRES IN LEASE

540.00

17. NO. OF ACRES ASSIGNED
TO THIS WELL

160

18. DISTANCE FROM PROPOSED LOCATION*
TO NEAREST WELL, DRILLING, COMPLETED,
OR APPLIED FOR, ON THIS LEASE, FT.

19. PROPOSED DEPTH

3743'

20. ROTARY OR CABLE TOOLS

Rotary

21. ELEVATIONS (Show whether DF, RT, GR, etc.)

6987' GL

DRILLING OPERATIONS AUTHORIZED ARE
SUBJECT TO COMPLIANCE WITH ATTACHED
"GENERAL REQUIREMENTS",
PROPOSED CASING AND CEMENTING PROGRAM

22. APPROX. DATE WORK WILL START*

November 1, 1985

This action is subject to technical and
procedural review pursuant to 43 CFR 3165.3
and appeal pursuant to 43 CFR 3165.4.

SIZE OF HOLE	SIZE OF CASING	WEIGHT PER FOOT	SETTING DEPTH	QUANTITY OF CEMENT
12-1/4"	New 8-5/8"	24#, K-55	200'	165.2 cu.ft. (Circulate to surface)
7-7/8"	New 5-1/2"	15.5#, K-55	3743'	347.6 cu.ft. (Cover Ojo Alamo)

Surface formation is San Jose.

Top of Ojo Alamo sand is at 3133'.

Top of Pictured Cliffs sand is at 3618'.

Fresh water mud will be used to drill from surface to Total Depth.

It is anticipated that an IEL, GR-CNL/CDL will be run from Total Depth to surface casing.

No abnormal pressures or poisonous gases are anticipated in this well.

It is expected that this well will be drilled before February 1, 1986.

This depends on time required for approvals, rig availability and the weather.

Gas is not dedicated.

IN ABOVE SPACE DESCRIBE PROPOSED PROGRAM: If proposal is to deepen or plug back, give data on present productive zone and proposed new productive zone. If proposal is to drill or deepen directionally, give pertinent data on subsurface locations and measured and true vertical depths. Give blowout preventer program, if any.

24.

SIGNED

TITLE Dist. Oper. Engr..

DATE

(This space for Federal or State use only)

PERMIT NO.

APPROVAL DATE

APPROVED BY

CONDITIONS OF APPROVAL, IF ANY:

RECEIVED

OCT 10 1985

OIL CON. DIV.
DIST. 3

NMOCC

*See Instructions On Reverse Side

RECEIVED

OCT 10 1985
OIL CON. DIV.
DIST. 3-85APPROVED
AS AMENDEDOCT 08 1985
(SGD.) MAT MILLENBACHM. MILLENBACH
AREA MANAGER

Title 18 U.S.C. Section 1001, makes it a crime for any person knowingly and willfully to make to any department or agency of the United States any false, fictitious or fraudulent statements or representations as to any matter within its jurisdiction.

NEW MEXICO OIL CONSERVATION COMMISSION
WELL LOCATION AND ACREAGE DEDICATION PLAT

Form C-102
Supersedes C-128
Effective 1-1-65

All distances must be from the outer boundaries of the Section.

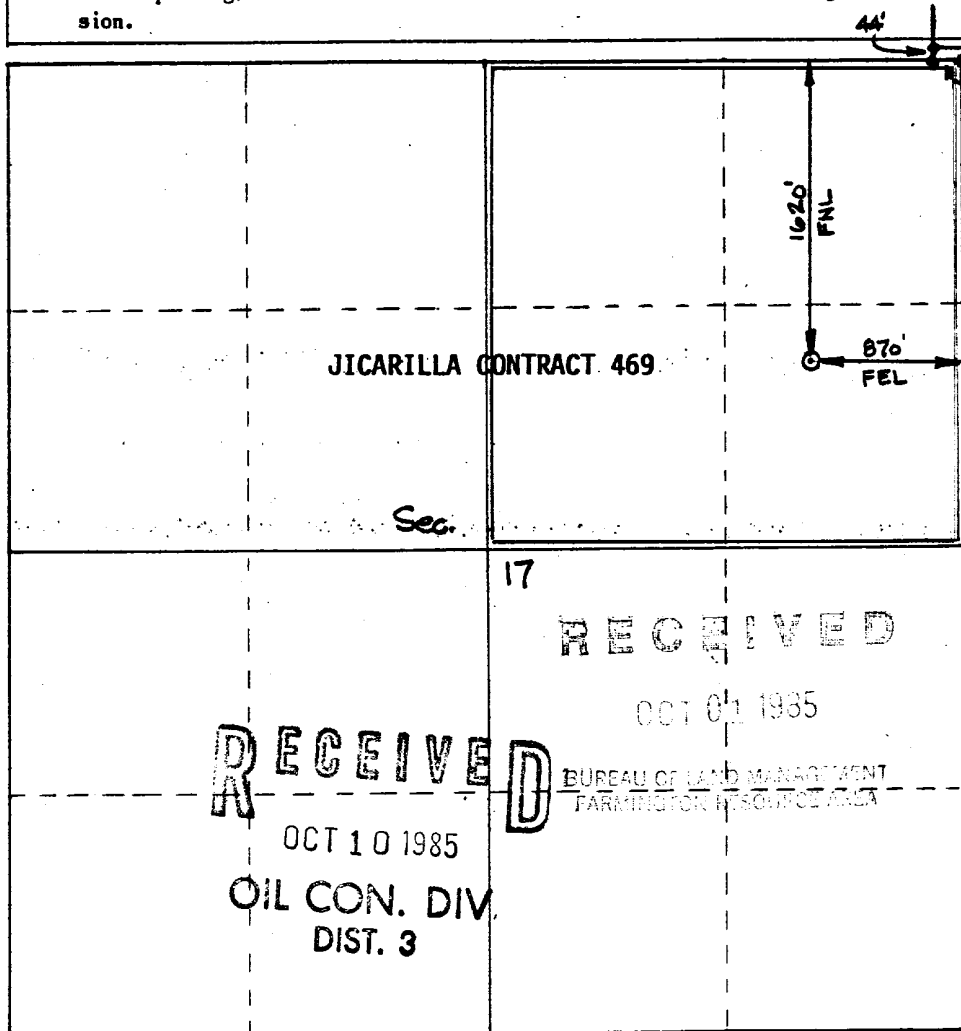
Operator SOUTHLAND ROYALTY Co.		Lease JICARILLA 469		Well No. 1
Unit Letter H	Section 17	Township 29 North	Range 3 West	County Rio Arriba
Actual Footage Location of Well: 1620 feet from the North line and 870 feet from the East line				
Ground Level Elev: 6987' GL	Producing Formation Fruitland	Pool Wildcat Undesignated	Dedicated Acreage 160 Acres	

1. Outline the acreage dedicated to the subject well by colored pencil or hachure marks on the plat below.
2. If more than one lease is dedicated to the well, outline each and identify the ownership thereof (both as to working interest and royalty).
3. If more than one lease of different ownership is dedicated to the well, have the interests of all owners been consolidated by communitization, unitization, force-pooling, etc?

☐ Yes ☐ No If answer is "yes," type of consolidation _____

If answer is "no," list the owners and tract descriptions which have actually been consolidated. (Use reverse side of this form if necessary.) _____

No allowable will be assigned to the well until all interests have been consolidated (by communitization, unitization, forced-pooling, or otherwise) or until a non-standard unit, eliminating such interests, has been approved by the Commission.



CERTIFICATION

I hereby certify that the information contained herein is true and complete to the best of my knowledge and belief.

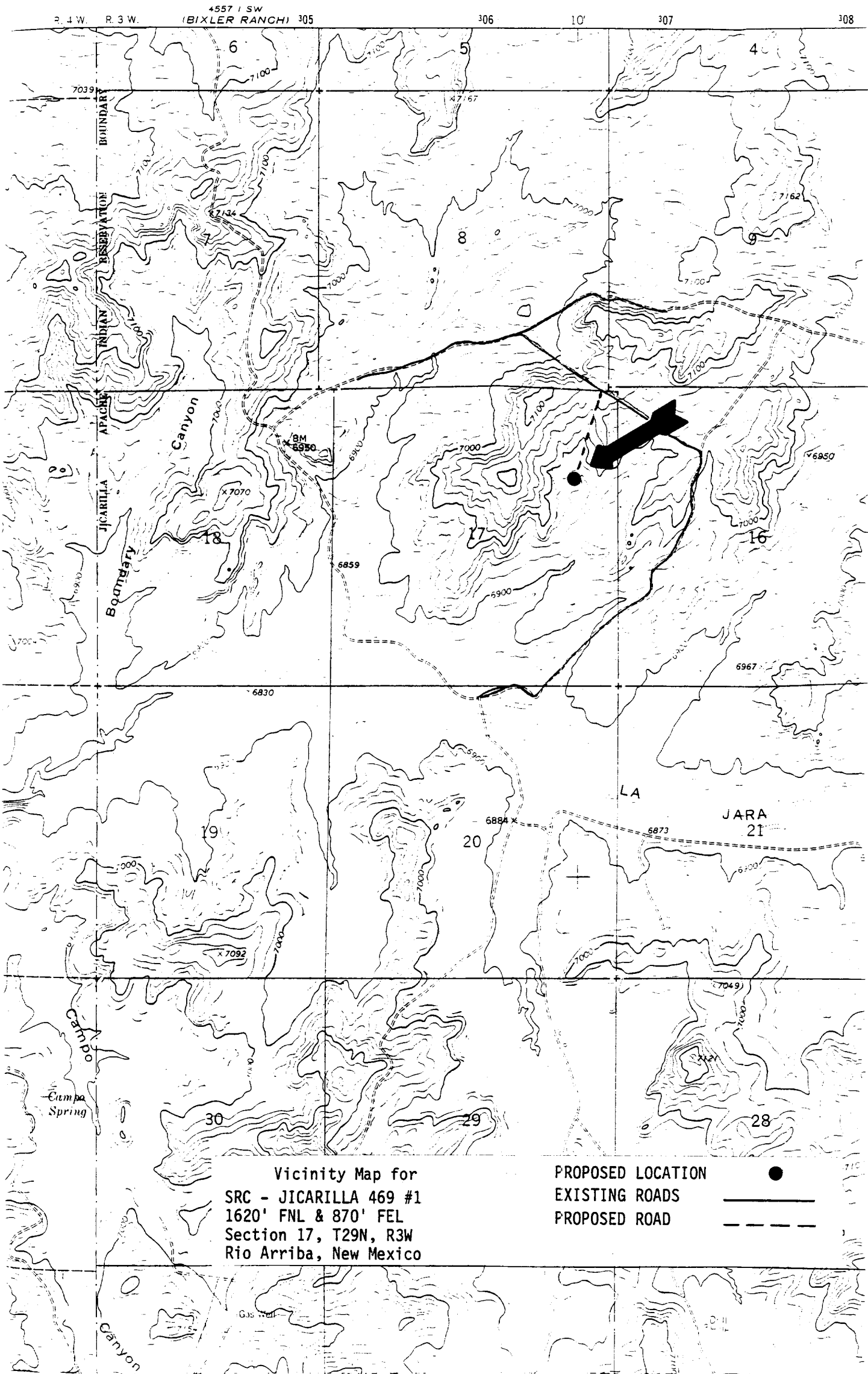
Name
C. Terry Hobbs
Position
Dist. Oper. Engineer
Company
Southland Royalty Company
Date
10-1-85

I hereby certify that the well location shown on this plat was plotted from field notes of actual surveys made by me or under my supervision, and that the same is true and correct to the best of my knowledge and belief.

Date Surveyed
9-16-85
Registered Professional Engineer and Land Surveyor
Fred B. Kerr Jr.
Certificate No.
3950

Scale: 1"=1000'

◆ Found B.C.



Vicinity Map for
SRC - JICARILLA 469 #1
1620' FNL & 870' FEL
Section 17, T29N, R3W
Rio Arriba, New Mexico