

UNITED STATES  
DEPARTMENT OF THE INTERIOR  
BUREAU OF LAND MANAGEMENT

30-039-23046

APPLICATION FOR PERMIT TO DRILL, DEEPEN, OR PLUG BACK

1a. TYPE OF WORK

DRILL ☒

DEEPEN ☐

PLUG BACK ☐

b. TYPE OF WELL

OIL  
WELL ☐

GAS  
WELL ☒

OTHER

SINGLE  
ZONE ☒

MULTIPLE  
ZONE ☐

2. NAME OF OPERATOR

Robert L. Bayless

3. ADDRESS OF OPERATOR

P.O. Box 168, Farmington, NM 87499

4. LOCATION OF WELL (Report location clearly and in accordance with any State requirements)  
At surface

1030 FSL & 935 FEL

At proposed prod. zone

1030 FSL & 935 FEL

14. DISTANCE IN MILES AND DIRECTION FROM NEAREST TOWN OR POST OFFICE\*

BUREAU OF LAND MANAGEMENT  
FARMINGTON RESOURCE AREA

15. DISTANCE FROM PROPOSED\*

LOCATION TO NEAREST  
PROPERTY OR LEASE LINE, FT.  
(Also to nearest drig. unit line, if any)

16. NO. OF ACRES IN LEASE

2235.53

17. NO. OF ACRES ASSIGNED  
TO THIS WELL

160

18. DISTANCE FROM PROPOSED LOCATION\*  
TO NEAREST WELL, DRILLING, COMPLETED,  
OR APPLIED FOR, ON THIS LEASE, FT.

19. PROPOSED DEPTH

3775

20. ROTARY OR CABLE TOOLS

Rotary

21. ELEVATIONS (Show whether DF, RT, GR, etc.)

6990' GL

This action is subject to technical and  
procedural review pursuant to 43 CFR 3165.3  
and appeal pursuant to 43 CFR 3165.4.

22. APPROX. DATE WORK WILL START\*

ASAP

23.

PROPOSED CASING AND CEMENTING PROGRAM

DRILLING OPERATIONS AUTHORIZED ARE  
SUBJECT TO COMPLIANCE WITH ATTACHED

SIZE OF HOLE	SIZE OF CASING	WEIGHT PER FOOT	SETTING DEPTH	"GENERAL REQUIREMENTS"
6-3/4"	5 1/2"	15.5	90'	15 ft <sup>3</sup> Class B circ. to surface
4-3/4"	3 1/2"	9.3	3775'	75 ft <sup>3</sup> to cover Ojo Alamo @ 3103'

This is a replacement well for the Jicarilla 452 #1 well which is temporarily abandoned. The Jicarilla 452 #1 well will be plugged with a 20 sx cement surface plug at the time that the surface casing is cemented on the Jicarilla 452 #1-Y.

The original Archaeological Report and Field Inspection are pertinent to this APD. This location is within the approved acreage for the Jicarilla 452 #1 well.

Will drill 6-3/4" surface hole to 90' and set 90' 5 1/2" 15.5#/ft J-55 csg w/15 ft<sup>3</sup> cement circ. to surface. Drill 4-3/4" hole to 3775'. Run Induction and Density logs and if well appears productive, will run 3775' 3 1/2" 9.3#/ft J-55 csg and cement w/75 ft<sup>3</sup> to cover Ojo Alamo @ 3103'. Circulating medium will be clear water, natural mud and water loss control additives. No abnormal pressures or temperatures are anticipated. Blowout preventer schematic is attached. The gas from this formation is no dedicated. Will perforate and stimulate as required for completion. ESTIMATED TOPS: Ojo Alamo - 3103', Fruitland - 3357', P.C. - 3623', T.D. - 3775'

IN ABOVE SPACE DESCRIBE PROPOSED PROGRAM: If proposal is to deepen or plug back, give data on present productive zone and proposed new productive zone. If proposal is to drill or deepen directionally, give pertinent data on subsurface locations and measured and true vertical depths. Give blowout preventer program, if any.

24.

SIGNED

TITLE

DATE

6-18-86

(This space for Federal or State office use)

PERMIT NO.

APPROVAL DATE

JUN 20 1986

APPROVED

APPROVED BY

TITLE

OIL CON. DIV.  
DIST. 3

AS AMENDED

DATE

JUN 18 1986

CONDITIONS OF APPROVAL, IF ANY:

NMOCC

\*See Instructions On Reverse Side

AREA MANAGER

## OIL CONSERVATION DIVISION

STATE OF NEW MEXICO  
ENERGY AND MINERALS DEPARTMENTP. O. BOX 2088  
SANTA FE, NEW MEXICO 87501Form C-102  
Revised 10-1-78

All distances must be from the outer boundaries of the Section.

Operator <b>BAYLESS, Robert L.</b>		Lease <b>JICARILLA 452</b>		Well No. <b>1Y</b>
Unit Letter <b>P</b>	Section <b>6</b>	Township <b>29 North</b>	Range <b>3 West</b>	County <b>Rio Arriba</b>
Actual Footage Location of Wells: (cardinal) <b>1030</b> feet from the <b>South</b> line and <b>935</b> feet from the <b>East</b> line				
Ground Level Elev. <b>6990 ft.</b>	Producing Formation <b>Pictured Cliffs</b>	Pool <b>E. Blanco P.C.</b>	Dedicated Acreage: <b>160</b> Acres	

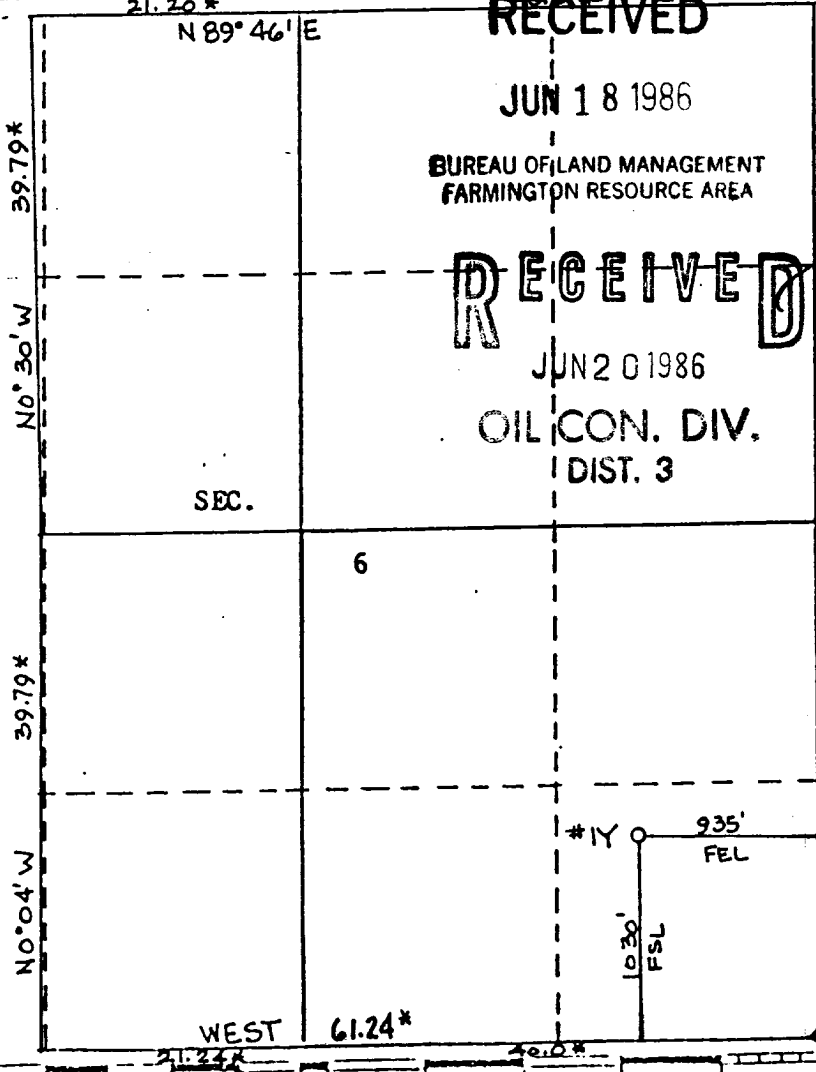
1. Outline the acreage dedicated to the subject well, by colored pencil or hachure marks on the plat below.
2. If more than one lease is dedicated to the well, outline each and identify the ownership thereof (both as to working interest and royalty).
3. If more than one lease of different ownership is dedicated to the well, have the interests of all owners been consolidated by communitization, unitization, force-pooling, etc?

☐ Yes ☐ No If answer is "yes," type of consolidation \_\_\_\_\_

If answer is "no," list the owners and tract descriptions which have actually been consolidated. (Use reverse side of this form if necessary.) \_\_\_\_\_

No allowable will be assigned to the well until all interests have been consolidated (by communitization, unitization, forced-pooling, or otherwise) or until a non-standard unit, eliminating such interests, has been approved by the Division.

\* Record plat 1922 GLO      ♦ Fd. GLO 1917 BC. w/ Rk. Plc



## CERTIFICATION

I hereby certify that the information contained herein is true and complete to the best of my knowledge and belief.

Name  
**Robert L. Bayless**

Position  
**Operator**

Company  
**Robert L. Bayless, Producer**

Date  
**June 18, 1986**

I hereby certify that the well location shown on this plat was plotted from field notes of actual surveys made by me or under my supervision, and that the same is true and correct to the best of my knowledge and belief.

Date Surveyed  
**June 17, 1986**

Registered Professional Engineer  
and/or Land Surveyor

Certificate No.  
**8894**

ROY A. RUSH  
NEW MEXICO  
8894

