

STATE OF NEW MEXICO
ENERGY AND MINERALS DEPARTMENT

OIL CONSERVATION DIVISION
P. O. BOX 2088
SANTA FE, NEW MEXICO 87501

Form C-102
Revised 10-1-79

All distances must be from the outer boundaries of the Section

| | | | | |
|--|--|-------------------------------------|--|-----------------------------|
| Operator BAYLESS, Robert L. | | Lease JICARILLA 452 | | Well No. 1Y |
| Unit Letter P | Section 6 | Township 29 North | Range 3 West | County Rio Arriba |
| Actual Footage Location of Well: (cardinal) 1030 feet from the South line and 935 feet from the East line | | | | |
| Ground Level Elev. 6990 ft. | Producing Formation Fruitland Coal | Pool Basin-Fruitland Coal | Dedicated Acreage: 320 Acres | |

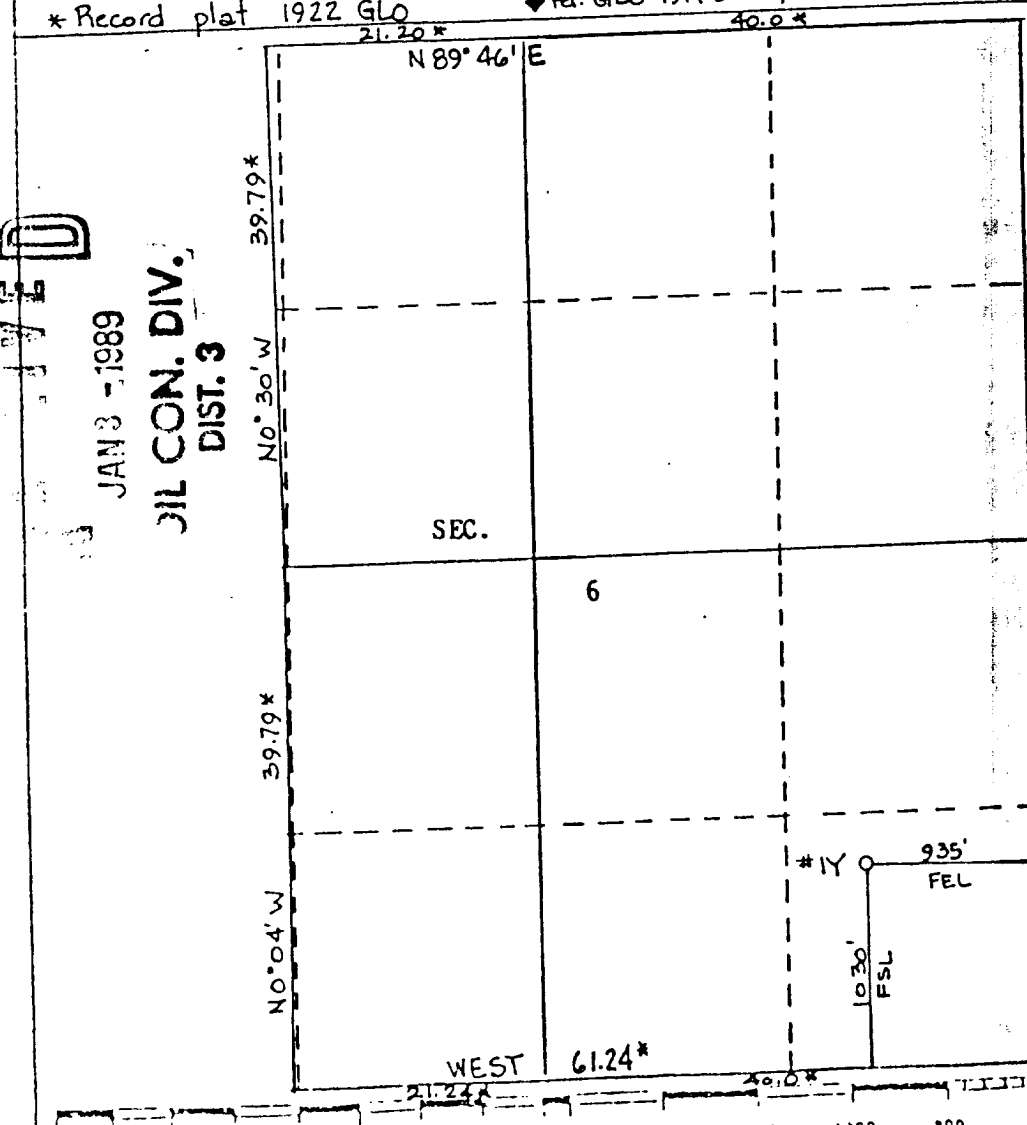
1. Outline the acreage dedicated to the subject well by colored pencil or hachure marks on the plat below.
2. If more than one lease is dedicated to the well, outline each and identify the ownership thereof (both as to working interest and royalty).
3. If more than one lease of different ownership is dedicated to the well, have the interests of all owners been consolidated by communitization, unitization, force-pooling, etc?

☐ Yes ☐ No If answer is "yes," type of consolidation _____

If answer is "no," list the owners and tract descriptions which have actually been consolidated. (Use reverse side of this form if necessary.) _____

No allowable will be assigned to the well until all interests have been consolidated (by communitization, unitization, forced-pooling, or otherwise) or until a non-standard unit, eliminating such interests, has been approved by the Division.

* Record plat 1922 GLO ♦ Fd. GLO 1917 BC. w/ Rk. Plc



CERTIFICATION

I hereby certify that the information contained herein is true and complete to the best of my knowledge and belief.

Kevin H. McCord

Name
Kevin H. McCord
Position
Petroleum Engineer
Company
Robert L. Bayless, Producer
Date
12/30/88

I hereby certify that the well location shown on this plat was plotted from field notes of actual surveys made by me or under my supervision, and that the same is true and correct to the best of my knowledge and belief.

ROY A. RUSH
NEW MEXICO
Date Surveyed
June 17, 1986
Registered Professional Engineer
and/or Land Surveyor
Certificate No.
8894

JAN 3 - 1989
OIL CON. DIV.
DIST. 3