

ROBERT L. BAYLESS  
#3 JICARILLA 452  
370'FNL & 1620'FEL  
Sec.6, T29N, R3W  
Rio Arriba Co., N.M.

JICARILLA 464 LEASE

ROBERT L. BAYLESS  
OPERATOR

36

31

I 4  
Kpc D.A.  
'84



T30N R3W

JICARILLA 452 LEASE

ROBERT L. BAYLESS  
OPERATOR

T29N R3W

1  
Kpc D.A. '84

6

1 I-Y  
Kpc D.A. '86

1  
KF  
Kpc  
Kmv  
Kgl  
Kd } D.A. '87

5  
Kgl  
Kd D.A. '73



**NEW MEXICO OIL CONSERVATION COMMISSION  
WELL LOCATION AND ACREAGE DEDICATION PLAT**

Form  
Superseded 1-1-28  
Life 1000

All distances must be from the outer boundaries of the Section

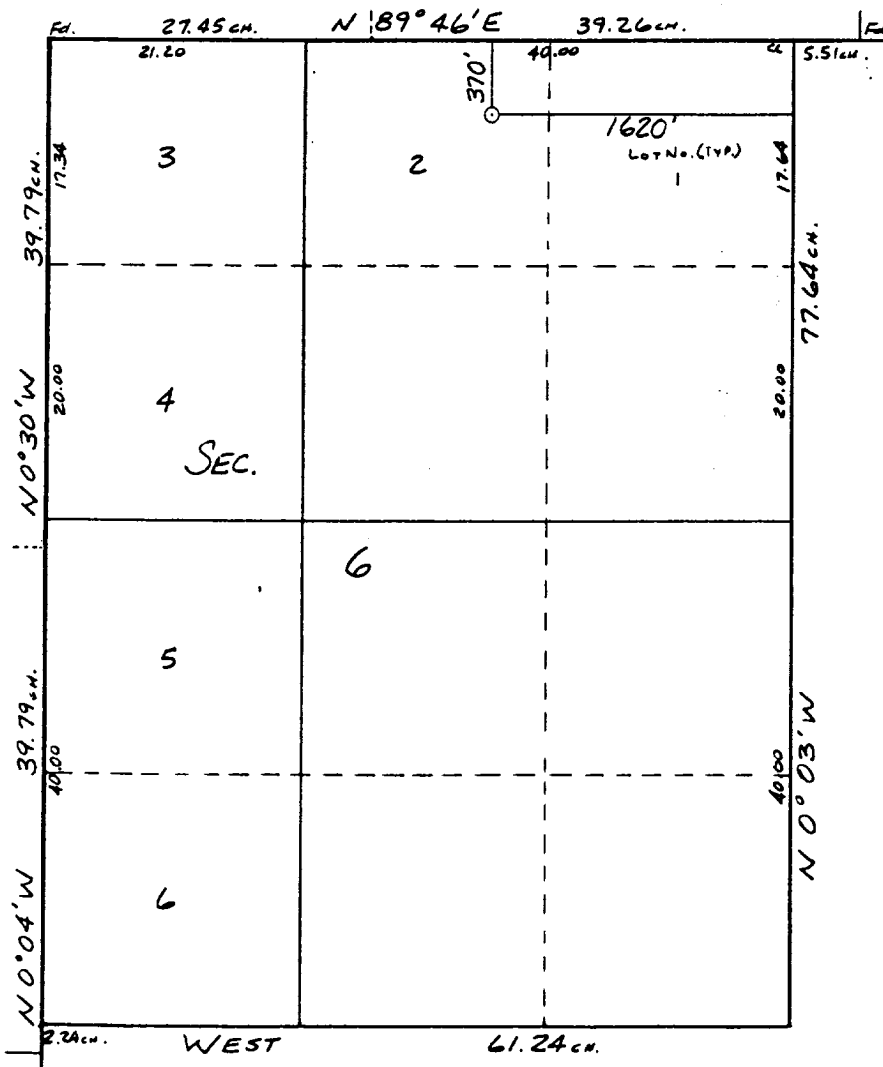
Operator <b>ROBERT L. BAYLESS</b>			Lease <b>JICARILLA 452</b>		Well No. <b>3</b>
Unit Letter <b>B</b>	Section <b>6</b>	Township <b>29 N</b>	Range <b>3 W</b>	County <b>RIO ARriba</b>	
Actual Footage Location of Well: <b>370</b> feet from the <b>North</b> line and <b>1620</b> feet from the <b>East</b> line					
Ground Level Elev. <b>6982</b>	Producing Formation <b>Pictured Cliffs</b>		Pool <b>Undesignated Pictured Cliffs</b>		Dedicated Acreage: <b>160</b> Acres

- Outline the acreage dedicated to the subject well by colored pencil or hachure marks on the plat below.
- If more than one lease is dedicated to the well, outline each and identify the ownership thereof (both as to working interest and royalty).
- If more than one lease of different ownership is dedicated to the well, have the interests of all owners been consolidated by communitization, unitization, force-pooling, etc?

☐ Yes ☐ No If answer is "yes," type of consolidation \_\_\_\_\_

If answer is "no," list the owners and tract descriptions which have actually been consolidated. (Use reverse side of this form if necessary.) \_\_\_\_\_

No allowable will be assigned to the well until all interests have been consolidated (by communitization, unitization, forced-pooling, or otherwise) or until a non-standard unit, eliminating such interests, has been approved by the Commission.



**CERTIFICATION**

I hereby certify that the information contained herein is true and complete to the best of my knowledge and belief.

Name Kevin H. McLeod  
Position Petroleum Engineer  
Company Robert L. Bayless  
Date May 5, 1988

I hereby certify that the well location shown on this plat was plotted from field notes of actual surveys made by me or under my supervision, and that the same is true and correct to the best of my knowledge and belief.

Date Surveyed May 5, 1988  
Registered Professional Engineer and Surveyor William E. Mahanke II  
Certificate No. 8466