

Title 18 U.S.C. Section 1001, makes it a crime for any person knowingly and willfully to make to any department or agency of the United States any false, fictitious or fraudulent statements or representations as to any matter within its jurisdiction.

DISTRICT II
P.O. Drawer DD, Artesia, N.M. 88211-0719

DISTRICT III
1000 Rio Brasos Rd., Artesia, N.M. 87410

DISTRICT IV
P.O. Box 5088, Santa Fe, NM 87504-5088

OIL CONSERVATION DIVISION

P.O. Box 2088
Santa Fe, NM 87504-2088

Instructions on back
Submit to Appropriate District Office
State Lease - 4 Copies
Fee Lease - 3 Copies

☐ AMENDED REPORT

WELL LOCATION AND ACREAGE DEDICATION PLAT

*API Number 30-039-26057		*Pool Code 72400	*Pool Name E Blanco PC EXT
*Property Code 24100	*Property Name JICARILLA 451-4		*Well Number 1
*OCRD No. 013925	*Operator Name MALLON OIL COMPANY		*Elevation 7156'

10 Surface Location

UL or lot no.	Section	Township	Range	Lot Ldn	Feet from the	North/South line	Feet from the	East/West line	County
G	4	29-N	3-W		1791	NORTH	1549	EAST	RIO ARriba

11 Bottom Hole Location If Different From Surface

UL or lot no.	Section	Township	Range	Lot Ldn	Feet from the	North/South line	Feet from the	East/West line	County

*Dedicated Acres 160/53.90	*Joint or Infill	*Consolidation Code	*Order No.
-------------------------------	------------------	---------------------	------------

NO ALLOWABLE WILL BE ASSIGNED TO THIS COMPLETION UNTIL ALL INTERESTS HAVE BEEN CONSOLIDATED
OR A NON-STANDARD UNIT HAS BEEN APPROVED BY THE DIVISION
N 89-36-11 E 5293'

<p>16 FD U.S.G.L.O. BRASS CAP 1917</p> <p>1791'</p> <p>1549'</p> <p>4</p> <p>RECEIVED DEC 24 1998 COMM. DIV.</p>	<p>17 FD U.S.G.L.O. BRASS CAP 1917</p> <p>1549'</p> <p>1791'</p>	<p>17 OPERATOR CERTIFICATION</p> <p>I hereby certify that the information contained herein is true and complete to the best of my knowledge and belief</p> <p>Signature Terry Lindeman</p> <p>Printed Name Operations Superintendent</p> <p>Title August 19, 1998</p> <p>Date</p>
		<p>18 SURVEYOR CERTIFICATION</p> <p>I hereby certify that the well location shown on this plat was plotted from field notes of actual surveys made by me or under my supervision, and that the same is true and correct to the best of my belief</p> <p>8-12 ROY A. RUSH</p> <p>Date of Survey</p> <p>Signature and Seal of Professional Surveyor 8894</p> <p>REGISTERED PROFESSIONAL LAND SURVEYOR NEW MEXICO</p> <p>8894</p> <p>Certificate Number</p>
		<p>FD U.S.G.L.O. BRASS CAP 1917</p>
		<p>FD U.S.G.L.O. BRASS CAP 1917</p>

DRILLING PROGRAM

Attached to Form 3160-3

Mallon Oil Company

Jicarilla 451-4 No. 1

1791' FNL and 1549' FEL (SW/NE) Unit G

Sec. 4, T29N-R3W

Rio Arriba County, New Mexico

LEASE NUMBER: JIC451

1. Geologic name of surface formation: San Jose

2. Estimated tops of important geologic markers:

San Jose	Surface
Nacimiento	2600'
Ojo Alamo	3230'
Kirtland	3458'
Fruitland	3478'
Pictured Cliffs	3468'
Lower P.C.	4017'
Total Depth	4500'

3. Estimated depths of anticipated fresh water, oil, or gas:

San Jose	1500'	Gas
Nacimiento	2600'	Gas
Ojo Alamo	3230'	Gas
Fruitland	3478'	Gas
Pictured Cliffs	3768'	Gas

No other formations are expected to give up oil, gas, or fresh water in measurable quantities.
The surface fresh water sands will be protected by setting 8-5/8" casing at 500' and circulating cement back to surface.

4. Proposed casing program:

<u>Hole Size</u>	<u>Interval</u>	<u>Casing OD</u>	<u>Casing weight, grade, thread</u>
12-1/4"	0-500'	8-5/8"	24 lb/ft, K55, ST&C
7-7/8"	0-4500'	5-1/2"	15.5 lb/ft, K55, LT&C

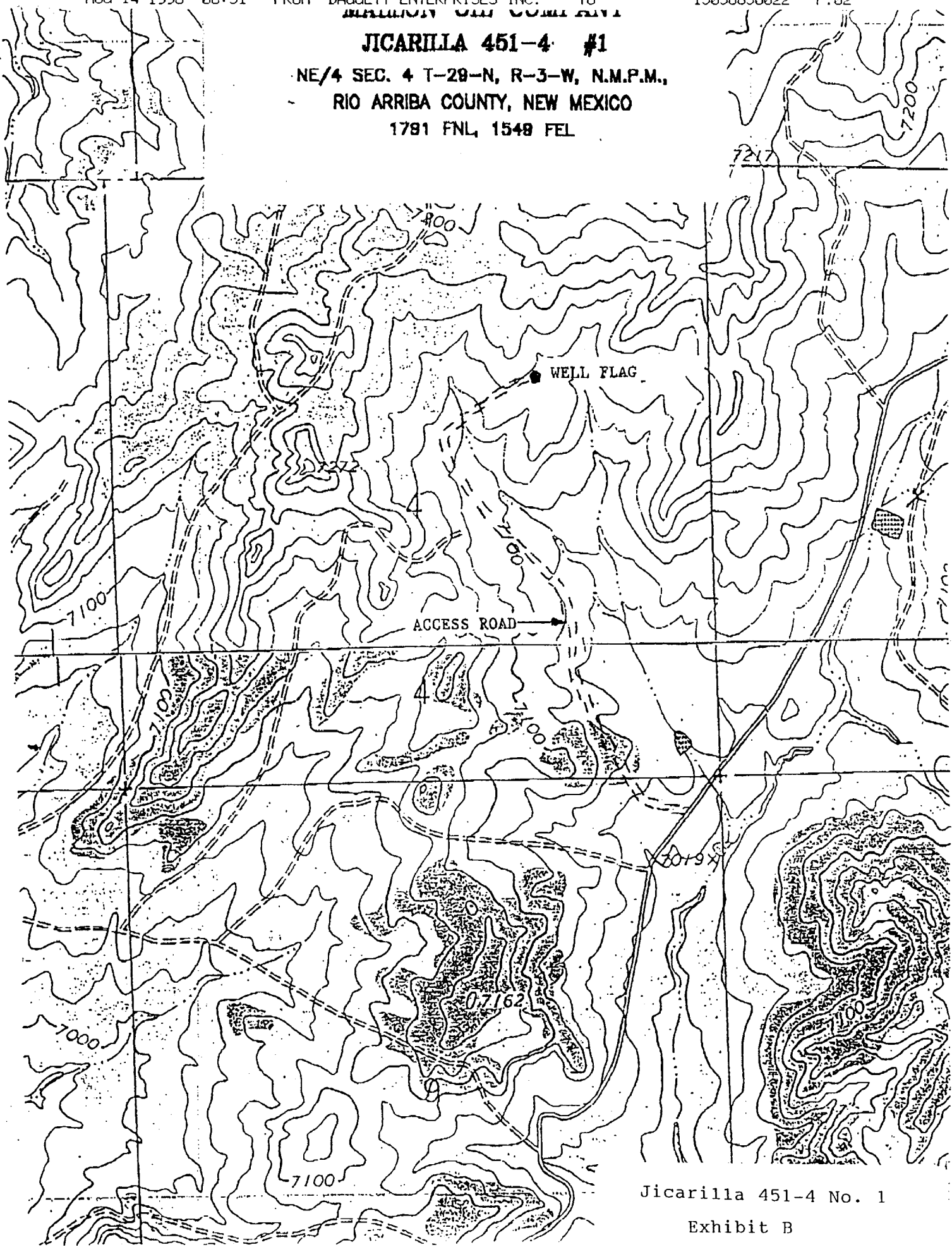
Cement program:

8-5/8" surface casing: Cemented to surface with 350 sks Class B containing 2% CaCl₂, 0.25 lb/sk Cello Seal, slurry to be mixed at 15.6 lb/gal, yield 1.18 cu ft/sk. Circulate cement to surface.

5-1/2" production casing: Lead slurry 300 sks 65/35 mixed at 13.4 lb/gal, 1.62 cu ft/sk, 30% excess. Tail with 270 sks 50/50 POZ, containing 1/4 lb/sk Cello Seal mixed at 14.15 lb/gal, 1.26 cu ft/sk, 30% excess.

JICARILLA 451-4 #1

**NE/4 SEC. 4 T-29-N, R-3-W, N.M.P.M.,
RIO ARriba COUNTY, NEW MEXICO
1791 FNL, 1549 FEL**



Jicarilla 451-4 No. 1

Exhibit B