

DISTRICT I  
P.O. Box 1980, Hobbs, N.M. 88241-1980  
DISTRICT II  
P.O. Drawer DD, Artesia, N.M. 88211-0719  
DISTRICT III  
1000 Rio Brazos Rd., Aztec, N.M. 87410  
DISTRICT IV  
PO Box 2088, Santa Fe, NM 87504-2088

State of New Mexico  
Energy, Minerals & Natural Resources Department

OIL CONSERVATION DIVISION

P.O. Box 2088  
Santa Fe, NM 87504-2088

Form C-102  
Revised February 21, 1994  
Instructions on back  
Submit to Appropriate District Office  
State Lease - 4 Copies  
Fee Lease - 3 Copies

☐ AMENDED REPORT

WELL LOCATION AND ACREAGE DEDICATION PLAT

|   |  |  |
|---|--|--|
| <sup>1</sup> API Number<br>30-039-26093 | <sup>2</sup> Pool Code<br>71629                  | <sup>3</sup> Pool Name<br>Basin Fruitland Coal |
| <sup>4</sup> Property Code<br>24248     | <sup>5</sup> Property Name<br>JICARILLA 29-02-20 | <sup>6</sup> Well Number<br>1                  |
| <sup>7</sup> ORD No.<br>013925          | <sup>8</sup> Operator Name<br>MALLON OIL COMPANY | <sup>9</sup> Elevation<br>7138'                |

<sup>10</sup> Surface Location

|                    |               |                  |              |         |                      |                           |                      |                        |                      |
|--------------------|---------------|------------------|--------------|---------|----------------------|---------------------------|----------------------|------------------------|----------------------|
| UL or lot no.<br>D | Section<br>20 | Township<br>29-N | Range<br>2-W | Lot Idn | Feet from the<br>860 | North/South line<br>NORTH | Feet from the<br>660 | East/West line<br>WEST | County<br>RIO ARRIBA |
|--------------------|---------------|------------------|--------------|---------|----------------------|---------------------------|----------------------|------------------------|----------------------|

<sup>11</sup> Bottom Hole Location If Different From Surface

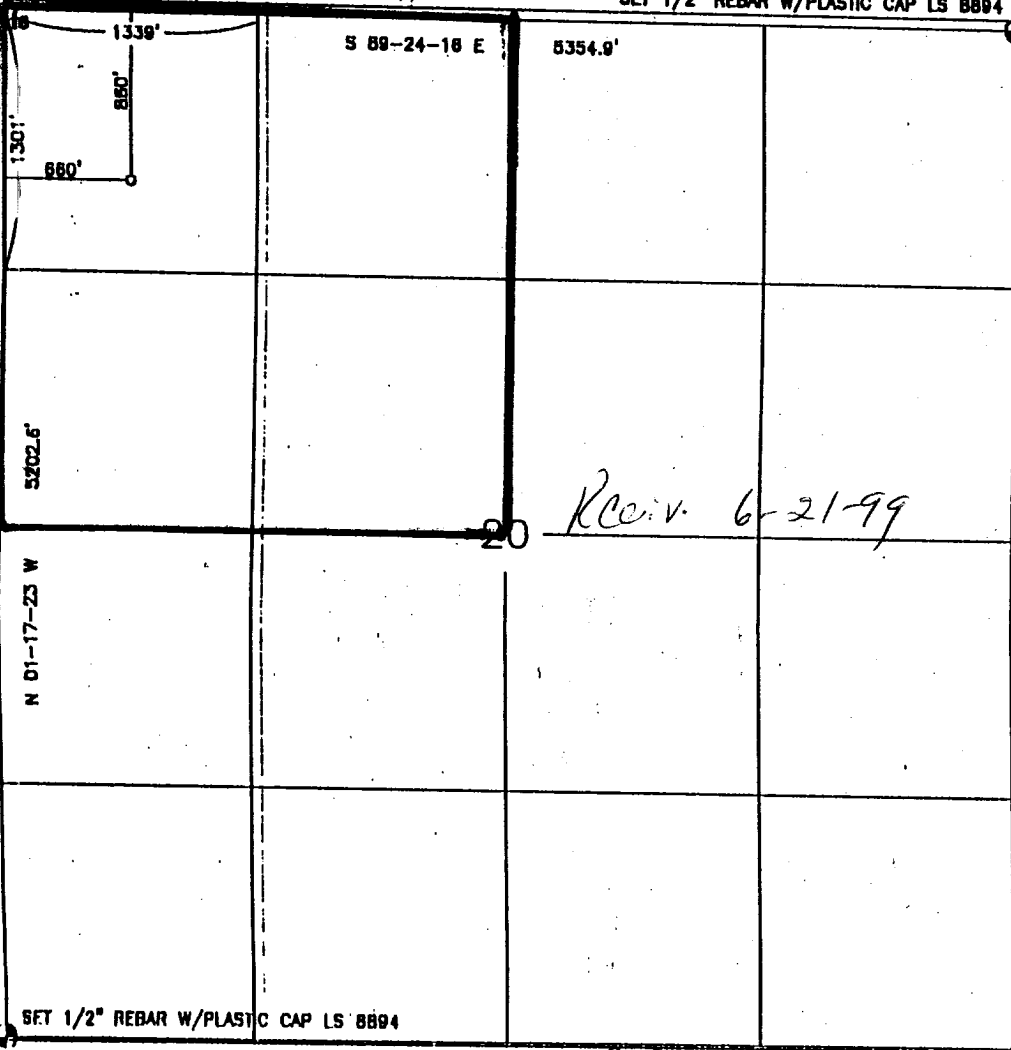
|               |         |          |       |         |               |                  |               |                |        |
|---------------|---------|----------|-------|---------|---------------|------------------|---------------|----------------|--------|
| UL or lot no. | Section | Township | Range | Lot Idn | Feet from the | North/South line | Feet from the | East/West line | County |
|---------------|---------|----------|-------|---------|---------------|------------------|---------------|----------------|--------|

|                                      |                               |                                  |                         |
|--------------------------------------|-------------------------------|----------------------------------|-------------------------|
| <sup>12</sup> Dedicated Acres<br>160 | <sup>13</sup> Joint or Infill | <sup>14</sup> Consolidation Code | <sup>15</sup> Order No. |
|--------------------------------------|-------------------------------|----------------------------------|-------------------------|

NO ALLOWABLE WILL BE ASSIGNED TO THIS COMPLETION UNTIL ALL INTERESTS HAVE BEEN CONSOLIDATED  
OR A NON-STANDARD UNIT HAS BEEN APPROVED BY THE DIVISION

SET 1/2" REBAR W/PLASTIC CAP LS 8894

SET 1/2" REBAR W/PLASTIC CAP LS 8894



<sup>17</sup> OPERATOR CERTIFICATION

I hereby certify that the information contained herein is true and complete to the best of my knowledge and belief

*Christy Serrano*  
Signature  
Christy Serrano  
Printed Name  
Production Secretary  
Title  
January 19, 1999  
Date

<sup>18</sup> SURVEYOR CERTIFICATION

I hereby certify that the well location shown on this plat was plotted from field notes of actual surveys made by me or under my supervision, and that the same is true and correct to the best of my knowledge and belief

11-5-99  
Date of Survey  
Signature and Seal of Surveyor  
ROY A. RUSH  
NEW MEXICO  
REGISTERED PROFESSIONAL LAND SURVEYOR  
8894  
Certificate Number

**NEW MEXICO ENERGY, MINERALS  
& NATURAL RESOURCES DEPARTMENT**

OIL CONSERVATION DIVISION  
2040 South Pacheco Street  
Santa Fe, New Mexico 87506  
(505) 827-7131

March 11, 1999

Mallon Oil Company  
P. O. Box 2797  
Durango, Colorado 81302  
Attention: Christy Serrano

RECEIVED  
MAR 12 1999

Telefax No. (970) 382-7650

OIL CON. DIV.  
DIST. 3

Administrative Order NSL-4230

Dear Ms. Serrano:

Reference is made to the following: (i) your application dated March 1, 1999; (ii) the New Mexico Oil Conservation Division's ("Division") initial response by e-mail on March 5, 1999 from Mr. Michael E. Stogner, Engineer in Santa Fe; (iii) your response by letter dated March 9, 1999 with the required data to complete this application; and (iv) the records of the Division: all concerning Mallon Oil Company's ("Mallon") request for a non-standard gas well location to be applicable to any and all formations and/or pools developed on 160-acre spacing from the surface to the base of the Pictured Cliffs formation, which presently includes but is not necessarily limited to the Undesignated East Blanco-Pictured Cliffs Pool.

Mallon is proposing to drill its Jicarilla 29-2-20 Well No. 1 (API No. 30-039-26093) 860 feet from the North line and 660 feet from the West line (Unit D) of Section 20, Township 29 North, Range 2 West, NMPM, Rio Arriba County, New Mexico. The NW/4 of Section 20 is to be dedicated to this well to order to form a standard 160-acre gas spacing and proration unit for all gas producing zones within this vertical extent.

The application has been duly filed under the provisions of Division Rule 104.F.

By the authority granted me under the provisions of Division Rule 104.F(2), the above-described unorthodox gas well location is hereby approved.

Sincerely,

Lori Wrotenbery  
Director

LW/MES/kv

cc: New Mexico Oil Conservation Division - Aztec  
U. S. Bureau of Land Management - Albuquerque