

UNITED STATES  
DEPARTMENT OF THE INTERIOR  
BUREAU OF LAND MANAGEMENT

CONTACT RECEIVING  
OFFICE FOR NUMBER  
OF COPIES REQUIRED

BLM Roswell District  
Modified Form No.  
M060-3160-3

(See other In-  
structions on  
Reverse Side)

WELL COMPLETION OR RECOMPLETION REPORT AND LOG \*

1a. TYPE OF WELL: OIL WELL  GAS WELL  DRY  Other \_\_\_\_\_

b. TYPE OF COMPLETION: NEW WELL  WORK OVER  DEEP EN  PLUG BACK  DIFF. ENV.  Other \_\_\_\_\_

2. NAME OF OPERATOR: BHP Petroleum (Americas) Inc. 3a. Area Code & Phone No. 713/780-5000

3. ADDRESS OF OPERATOR: 5847 San Felipe #3600, Houston, TX 77057

4. LOCATION OF WELL (Report location clearly and in accordance with State requirements):  
At surface 1885' FSL & 2135' FWL  
At top prod. interval reported below  
At total depth

9a. API Well No. 30-045-07006 14. PERMIT NO. DATE ISSUED.

15. DATE SPUNDED 12/4/52 16. DATE T.D. REACHED 1/21/53 17. DATE COMPL. (Ready to prod) 10/06/92 18. ELEVATIONS (OF RKR, RT, GR, ETC.) \* KB 5612' - GR 5606'

20. TOTAL DEPTH, MD & TVD 1321' 21. PLUG. BACK T.D., MD & TVD 1228' 22. IF MULTIPLE COMPLET. HOW MANY? 23. INTERVALS DRILLED BY ROTARY TOOLS 0-1241' CABLE TOOLS 1241'-TD

24. PRODUCING INTERVAL(S), OF THIS COMPLETION—TOP, BOTTOM, NAME (MD AND TVD) \* 1208' - 1222' Fruitland Coal 25. WAS DIRECTIONAL SURVEY MADE No

26. TYPE ELECTRIC AND OTHER LOGS RUN 27. WAS WELL CORED

29. CASING RECORD (Report all strings set in well)

CASING SIZE	WEIGHT, LB./FT.	DEPTH SET (MD)	HOLE SIZE	CEMENTING RECORD	AMOUNT PULLED
9-5/8"	40#	88'	11-1/4"	Cmtd to surface w/50 sx Neat	
7"	20#	1240'	8-3/4"	Cmtd w/100 sx Neat	

29. LINER RECORD

SIZE	TOP (MD)	BOTTOM (MD)	SACKS CEMENT*	SCREEN (MD)	30. TUBING RECORD
					SIZE 2-3/8" DEPTH SET (MD) 1224' PACKER SET (MD) No packer

31. PERFORATION RECORD (Interval, size and number)

1208' - 1222' w/4" csg gun loaded  
4 JSPF 90 deg. phasing  
shooting a .50 hole  
w/19 gram charge

32. ACID, SHOT, FRACTURE, CEMENT SQUEEZE, ETC.

DEPTH INTERVAL (MD)	AMOUNT AND KIND OF MATERIAL USED
1208'-1222'	674 bbl 30# crosslink gel, 67,350# 20/40 Brady sand @ 25 BPM

33. PRODUCTION

DATE FIRST PRODUCTION \_\_\_\_\_ PRODUCTION METHOD (Flowing, gas lift, pumping—size and type of pump) Flowing WELL STATUS (Producing or shut-in) shut-in

DATE OF TEST	HOURS TESTED	CHOKE SIZE	PROD'N. FOR TEST PERIOD	OIL—BBL.	GAS—MCF.	WATER—BBL.	GAS-OIL RATIO
10/6/92	24	1/2"			120	15 load	
FLOW. TUBING PRESS.	CASING PRESSURE	CALCULATED 24-HOUR RATE	OIL—BBL.	GAS—MCF.	ACCEPTED FOR RECORD		
48	72			120	15 load		

34. DISPOSITION OF GAS (Sold, used for fuel, vented, etc.)

35. LIST OF ATTACHMENTS

36. I hereby certify that the foregoing and attached information is complete and correct as determined from all available records

SIGNED Carl Kolbe TITLE Regulatory Affairs Rep. DATE 10/20/92

\*(See Instructions and Spaces for Additional Data on Reverse Side)



Submit to Appropriate District Office  
 State Lease - 4 copies  
 Fee Lease - 3 copies

State of New Mexico  
 Energy, Minerals and Natural Resources Department

Form C-102  
 Revised 1-1-89

**OIL CONSERVATION DIVISION**  
 310 Old Santa Fe Trail, Room 206  
 Santa Fe, New Mexico 87503

**DISTRICT I**  
 P.O. Box 1980, Hobbs, NM 88240

**DISTRICT II**  
 P.O. Drawer DD, Artesia, NM 88210

**DISTRICT III**  
 1000 Rio Brazos Rd., Aztec, NM 87410

**WELL LOCATION AND ACREAGE DEDICATION PLAT**  
 All Distances must be from the outer boundaries of the section

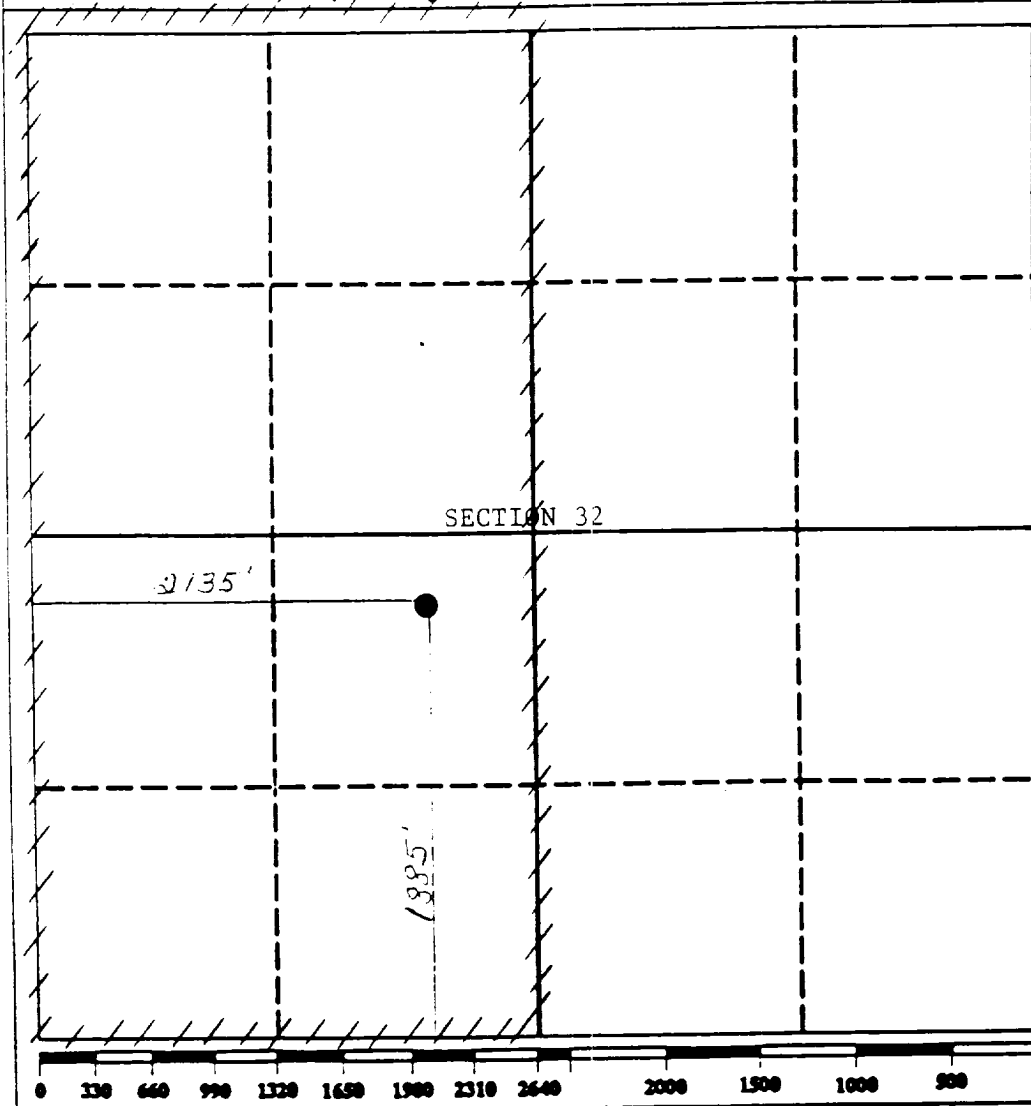
Operator BHP Petroleum (Americas), Inc.			Lease Gallegos Canyon Unit		Well No. 9
Unit Letter K	Section 32	Township 28N	Range 12W	County San Juan	
Actual Footage Location of Well: 1885 feet from the South line and 2135 feet from the West line					
Ground level Elev. 5610 <sup>+</sup> KB	Producing Formation Fruitland Coal		Pool Basin Fruitland Coal	Dedicated Acreage: 320 Acres	

- Outline the acreage dedicated to the subject well by colored pencil or hatchure marks on the plat below.
- If more than one lease is dedicated to the well, outline each and identify the ownership thereof (both as to working interest and royalty).
- If more than one lease of different ownership is dedicated to the well, have the interest of all owners been consolidated by communitization, unitization, force-pooling, etc.?
 

Yes     No    If answer is "yes" type of consolidation \_\_\_\_\_

If answer is "no" list the owners and tract descriptions which have actually been consolidated. (Use reverse side of this form if necessary.) \_\_\_\_\_

No allowable will be assigned to the well until all interests have been consolidated (by communitization, unitization, forced-pooling, or otherwise) or until a non-standard unit, eliminating such interest, has been approved by the Division.



**OPERATOR CERTIFICATION**

I hereby certify that the information contained herein is true and complete to the best of my knowledge and belief.

Signature: *Beverly Comer*  
 Printed Name: Beverly Comer  
 Position: Production Technician  
 Company: BHP Petroleum (Americas)  
 Date: 12/10/91

**SURVEYOR CERTIFICATION**

I hereby certify that the well location shown on this plat was plotted from field notes actual surveys made by me or under my supervision, and that the same is true and correct to the best of my knowledge and belief.

Date Surveyed: OCT 21 1991  
 Signature & Seal of Professional Surveyor: [Stamp]  
 Original on file  
 Certificate No.:

