

UNITED STATES  
DEPARTMENT OF THE INTERIOR  
BUREAU OF LAND MANAGEMENT

FORM APPROVED  
Budget Bureau No. 1004-0135  
Expires: March 31, 1993

**SUNDRY NOTICES AND REPORTS ON WELLS**

Do not use this form for proposals to drill or to deepen or reentry to a different reservoir.  
Use "APPLICATION FOR PERMIT—" for such proposals

**SUBMIT IN TRIPLICATE**

|  |  |
|--|--|
| 1. Type of Well<br><input checked="" type="checkbox"/> Oil Well <input type="checkbox"/> Gas Well <input type="checkbox"/> Other     | 5. Lease Designation and Serial No.<br><b>NM 09979</b>           |
| 2. Name of Operator<br><b>HICKS OIL &amp; GAS, INC.</b>  | 6. If Indian, Allottee or Tribe Name                             |
| 3. Address and Telephone No.<br><b>Post Office Drawer 3307, Farmington, New Mexico 87499 505/327-4902</b>                            | 7. If Unit or CA, Agreement Designation                          |
| 4. Location of Well (Footage, Sec., T., R., M., or Survey Description)<br><b>1920' FSL and 2120' FEL<br/>Section 15- T28N - R13W</b> | 8. Well Name and No.<br><b>S.E. Cha Cha #24</b>                  |
|  | 9. API Well No.<br><b>30-045-07458</b>                           |
|  | 10. Field and Pool, or Exploratory Area<br><b>Cha Cha Gallup</b> |
|  | 11. County or Parish, State<br><b>San Juan, NM</b>               |

12. CHECK APPROPRIATE BOX(s) TO INDICATE NATURE OF NOTICE, REPORT, OR OTHER DATA

| TYPE OF SUBMISSION                                   | TYPE OF ACTION                                  |  |
|--|---|--|
| <input checked="" type="checkbox"/> Notice of Intent | <input checked="" type="checkbox"/> Abandonment | <input type="checkbox"/> Change of Plans         |
| <input type="checkbox"/> Subsequent Report           | <input type="checkbox"/> Recompletion           | <input type="checkbox"/> New Construction        |
| <input type="checkbox"/> Final Abandonment Notice    | <input type="checkbox"/> Plugging Back          | <input type="checkbox"/> Non-Routine Fracturing  |
|  | <input type="checkbox"/> Casing Repair          | <input type="checkbox"/> Water Shut-Off          |
|  | <input type="checkbox"/> Altering Casing        | <input type="checkbox"/> Conversion to Injection |
|  | <input type="checkbox"/> Other                  | <input type="checkbox"/> Dispose Water           |

(Note: Report results of multiple completion on Well Completion or Recompletion Report and Log form.)

13. Describe Proposed or Completed Operations (Clearly state all pertinent details, and give pertinent dates, including estimated date of starting any proposed work. If well is directionally drilled, give subsurface locations and measured and true vertical depths for all markers and zones pertinent to this work.)\*

Hicks Oil & Gas, Inc. proposes to plug and abandon subject well per the attached procedure and well bore schematic.

RECEIVED  
JUL - 6 1995  
OIL CON. DIV.  
DIST. 3

14. I hereby certify that the foregoing is true and correct

Signed JIM HICKS Title President, Hicks Oil & Gas, Inc. Date 6/5/95

(This space for Federal or State office use)

Approved by \_\_\_\_\_ Title \_\_\_\_\_

Conditions of approval, if any: \_\_\_\_\_

APPROVED

Title 18 U.S.C. Section 1001, makes it a crime for any person knowingly and willfully to make to any department or agency of the United States any false, fictitious or fraudulent statements or representations as to any matter within its jurisdiction.

## PLUG AND ABANDONMENT PROCEDURE

6-2-95

SE Cha Cha #24  
Cha Cha Gallup  
SE, Sec. 15, T28N, R13W  
San Juan County, New Mexico

Note: All cement volumes use 100% excess outside pipe and 50' excess inside pipe. The stabilizing wellbore fluid will be 8.3 ppg, sufficient to balance all exposed formation pressures.

1. Install and test rig anchors. Prepare blow pit. Comply to all NMOCD, BLM and Hicks safety rules and regulations. MOL and RU daylight pulling unit. Conduct safety meeting for all personnel on location. Blow well down; kill with water as necessary. ND wellhead and NU BOP and stripping head; test BOP.
2. Pull and LD rods. Release Baker Loc-set Packer at 5700'; POH and LD tubing. PU 2" workstring.
3. **Plug #1 (Gallup perforations and top, 5809' - 5340')**: RIH with open ended tubing to 5809', or as deep as possible. Pump 25 bbls water. Mix 80 sxs Class B cement (50% excess, long plug) and spot a balanced plug from 5809' to 5340'. Pull above cement and WOC RIH and tag cement. Load well with water and circulate clean. Pressure test casing to 500#. POH with tubing.
4. **Plug #2 (Mesaverde top, 3328' - 3228')**: Perforate 3 or 4 squeeze holes at 3328'. Establish rate into squeeze holes if casing tested. PU 5-1/2" cement retainer and RIH; set at 3278'. Pressure test tubing to 1000#. Establish rate into squeeze holes. Mix and pump 46 sxs Class B cement, squeeze 29 sxs cement out 5-1/2" casing from 3328' to 3228' and leave 17 sxs cement inside casing to cover Mesaverde top. Pressure test casing to 500#. POH to 1792'.
5. **Plug #3 (Pictured Cliffs top, 1792' - 1692')**: Mix 17 sxs Class B cement and spot balanced plug from 1792' to 1692' inside casing. POH with tubing.
6. **Plug #4 (Fruitland top, 1497' - 1397')**: Perforate 3 or 4 squeeze holes at 1497'. Establish rate into squeeze holes if casing tested. PU a 5-1/2" cement retainer and RIH; set at 1447'. Establish rate into squeeze holes. Mix and pump 46 sxs Class B cement, squeeze 29 sxs cement out 5-1/2" casing from 1497' to 1397' and leave 17 sxs cement inside casing to cover Fruitland top. Pressure test casing to 500#. POH and LD tubing.
7. **Plug #5 (Kirtland and Ojo Alamo tops, and Surface, 517' )**: Perforate 3 or 4 squeeze holes at 517'. Mix approximately 160 sxs Class B cement from 517' to surface to cover Kirtland and Ojo Alamo tops, circulate good cement out bradenhead valve. Shut in well and WOC.
8. ND BOP and cut off well head below surface casing flange. Install P&A marker with cement to comply with regulations. RD, MOL and cut off anchors. Restore location per BLM stipulations.

# SE Cha Cha #24

Proposed P&A

Cha Cha Gallup

1920' FSL & 2120' FEL

SE, Section 15, T-28-N, R-13-W, San Juan County, NM

Today's Date: 6/2/95  
Spud: 11/5/60  
Completed: 11/14/60

12-1/4" hole

Ojo Alamo @ 350'  
Kirtland @ 467'

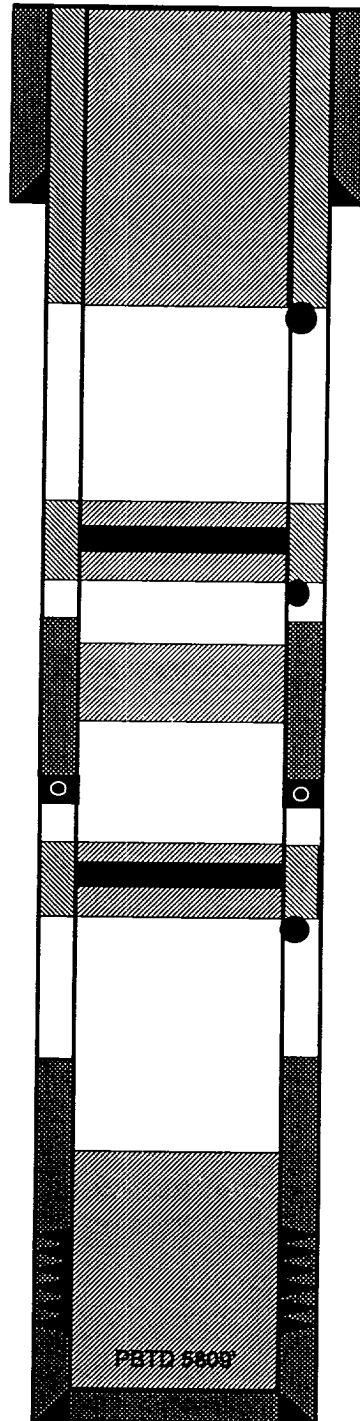
Fruitland @ 1447'

Pictured Cliffs @ 1742'

Mesaverde @ 3278'

Gallup @ 5390'

7-7/8" hole



TD 5850'

8-5/8" 24# Csg set @ 328'  
Cmt w/ 225 sxs (Circulated to Surface)

Plug #5 517' - Surface with  
160 sxs Class B cement.

Perforate @ 517'

Cement Rt @ 1447'

Perforate @ 1497'

Top of Cement @ 1600' (T.S.)

Plug #4 1497' - 1397' with  
46 sxs Class B cement,  
29 sxs outside casing and  
17 sxs inside.

Plug #3 1792' - 1692' with  
17 sxs Class B cement.

DV Tool @ 1971',  
Cmt w/ 100 sxs

Cement Rt @ 3278'

Perforate @ 3328'

Plug #2 3328' - 3228' with  
46 sxs Class B cement,  
29 sxs outside casing and  
17 sxs inside.

Top of Cement @ 5200' (T.S.)

Plug #1 5809' - 5340' with  
80 sxs Class B cement,  
(long plug, 50% excess)

Gallup Perforations:  
5740' - 5758'

5-1/2" 14# & 15.5# Csg set @ 5850'  
Cmt w/ 200 sxs