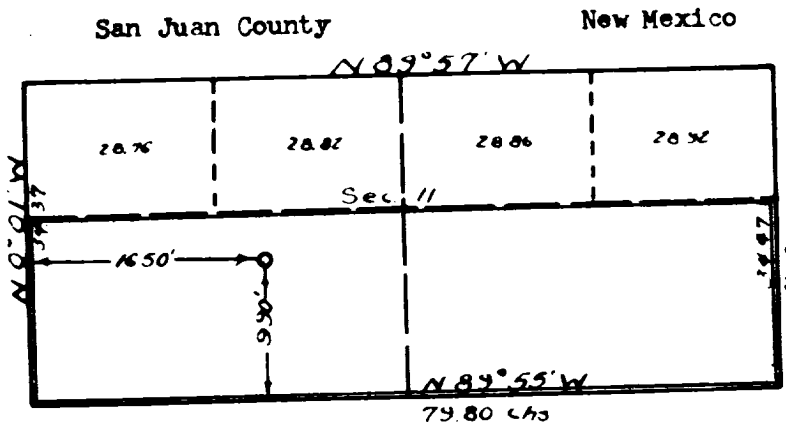


Company E. P. Casinger  
 Lease Phillips (SF 078072) Well No. 1  
 Sec. 11, T. 28 N, R. 13 W, NMPM  
 Location 990' from the South Line and 1650' from  
the West Line.  
 Elevation 5964 Ungraded ground



Notes: Stanolind Oil and Gas and Benson-Montin,  
 Gallegos Canyon Unit, have the North, East  
 and South offsets to this Section.

N

Scale—4 inches equal 1 mile.

This is to certify that the above plat was prepared from field notes  
 of actual surveys made by me or under my supervision and that the  
 same are true and correct to the best of my knowledge and belief.

*Charles J. Finklea*

Seal:

Charles J. Finklea  
 Registered Professional  
 Engineer and Land Surveyor. N. Mex. Reg. No. 1302

Surveyed

January 19,

1953