

UNITED STATES  
DEPARTMENT OF THE INTERIOR  
GEOLOGICAL SURVEY

## APPLICATION FOR PERMIT TO DRILL, DEEPEN, OR PLUG BACK

## 1a. TYPE OF WORK

DRILL ☒DEEPEN ☐PLUG BACK ☐

## b. TYPE OF WELL

OIL  
WELL ☐GAS  
WELL ☒

OTHER

SINGLE  
ZONE ☒MULTIPLE  
ZONE ☐

## 2. NAME OF OPERATOR

Aztec Oil &amp; Gas Company

## 3. ADDRESS OF OPERATOR

Drawer 570, Farmington, New Mexico

## 4. LOCATION OF WELL (Report location clearly and in accordance with any State requirements.\*)

At surface

990 FSL &amp; 1850 FWL, Section 22-28N-13W

At proposed prod. zone

## 14. DISTANCE IN MILES AND DIRECTION FROM NEAREST TOWN OR POST OFFICE\*

## 15. DISTANCE FROM PROPOSED\*

LOCATION TO NEAREST  
PROPERTY OR LEASE LINE, FT.  
(Also to nearest drlg. unit line, if any)18. DISTANCE FROM PROPOSED LOCATION\*  
TO NEAREST WELL, DRILLING, COMPLETED,  
OR APPLIED FOR, ON THIS LEASE, FT.

2440

## 16. NO. OF ACRES IN LEASE

## 19. PROPOSED DEPTH

6426

17. NO. OF ACRES ASSIGNED  
TO THIS WELL

320 Acres

## 20. ROTARY OR CABLE TOOLS

Rotary Tools

## 21. ELEVATIONS (Show whether DF, RT, GR, etc.)

6063 Gr

## 22. APPROX. DATE WORK WILL START\*

9-1-70

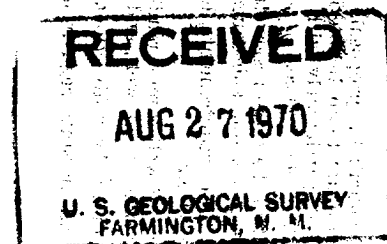
## 23.

## PROPOSED CASING AND CEMENTING PROGRAM

SIZE OF HOLE	SIZE OF CASING	WEIGHT PER FOOT	SETTING DEPTH	QUANTITY OF CEMENT
12 1/4"	8-5/8"	24#	300'	200 Srs
7-7/8"	4-1/2"	10.5#	6426'	1st Stage 500 Srs W/150 Srs 2nd Stage 400 Srs W/200 Srs

## PROPOSE TO:

1. Drill 12 1/4" Hole to 300'.
2. Set 300' Of 8-5/8" 24# Casing.
3. Drill 7-7/8" Hole To TD Of 6426', Log, Set 4 1/2" Casing.
4. Complete In The Dakota Formation.



Acreage Dedication: W/2 - Section 22-28N-13W

IN ABOVE SPACE DESCRIBE PROPOSED PROGRAM: If proposal is to deepen or plug back, give data on present productive zone and proposed new productive zone. If proposal is to drill or deepen directionally, give pertinent data on subsurface locations and measured and true vertical depths. Give blowout preventer program, if any.

SIGNED

TITLE

District Superintendent

DATE August 27, 1970

(This space for Federal or State office use)

PERMIT NO.

APPROVAL DATE

APPROVED BY

TITLE

DATE

CONDITIONS OF APPROVAL, IF ANY:

**NEW MEXICO OIL CONSERVATION COMMISSION  
WELL LOCATION AND ACREAGE DEDICATION PLAT**

Form C-102  
Supersedes C-128  
Effective 1-1-65

All distances must be from the outer boundaries of the Section.

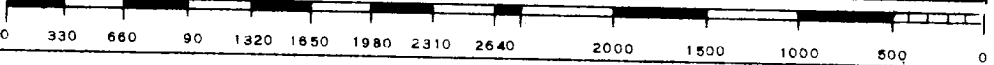
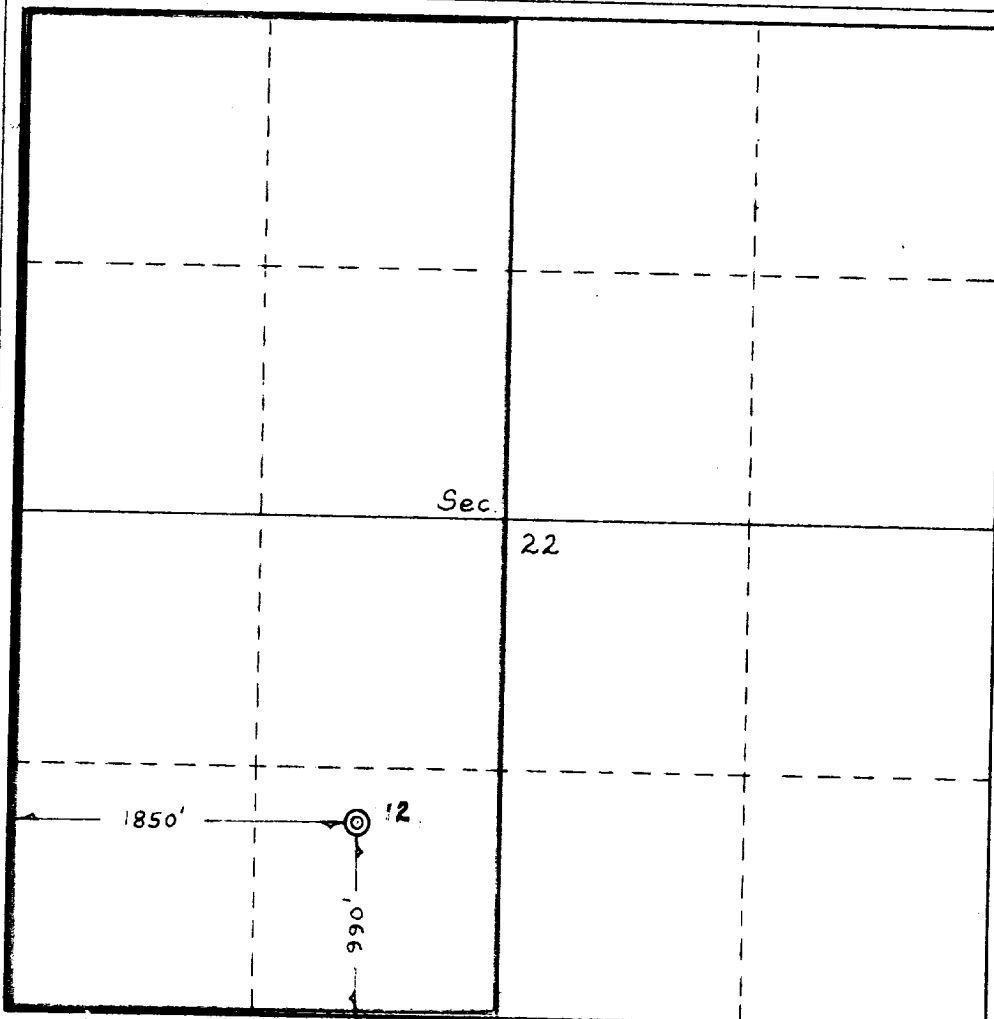
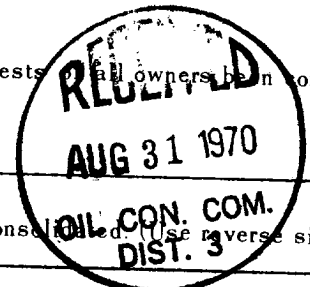
Operator <b>Aztec Oil &amp; Gas Company</b>			Lease <b>Robinson</b>		Well No. <b>12</b>
Unit Letter <b>N</b>	Section <b>22</b>	Township <b>28N</b>	Range <b>13W</b>	County <b>San Juan</b>	
Actual Footage Location of Well: <b>990</b> feet from the <b>South</b> line and <b>1850</b> feet from the <b>West</b> line					
Ground Level Elev. <b>6063</b>	Producing Formation <b>Dakota</b>	Pool <b>Basin Dakota</b>		Dedicated Acreage: <b>320</b> Acres	

1. Outline the acreage dedicated to the subject well by colored pencil or hachure marks on the plat below.
2. If more than one lease is dedicated to the well, outline each and identify the ownership thereof (both as to working interest and royalty).
3. If more than one lease of different ownership is dedicated to the well, have the interests of all owners been consolidated by communitization, unitization, force-pooling, etc?

☐ Yes    ☐ No    If answer is "yes," type of consolidation \_\_\_\_\_

If answer is "no," list the owners and tract descriptions which have actually been consolidated (use reverse side of this form, if necessary.) \_\_\_\_\_

No allowable will be assigned to the well until all interests have been consolidated (by communitization, unitization, forced-pooling, or otherwise) or until a non-standard unit, eliminating such interests, has been approved by the Commission.



<b>CERTIFICATION</b>	
I hereby certify that the information contained herein is true and complete to the best of my knowledge and belief.	
<b>ORIGINAL SIGNED BY JOE C. SALMON</b>	
Name	<u>Joe C. Salmon</u>
Position	<u>District Superintendent</u>
Company	<u>Aztec Oil &amp; Gas Company</u>
Date	<u>August 27, 1970</u>
I hereby certify that the well location shown on this plat was plotted from field notes of actual surveys made by me or under my supervision, and that the same is true and correct to the best of my knowledge and belief.	
Date Surveyed	<u>August 25, 1970</u>
Registered Professional Engineer and/or Land Surveyor	<u>Fred B. Kern</u>
Certificate No.	<u>3950</u>