

**NEW MEXICO OIL CONSERVATION COMMISSION
WELL LOCATION AND ACERAGE DEDICATION PLAT**

All distances must be from the outer boundaries of the Section

| | | | | | |
|---|--|-----------------------------|-------------------------------------|---------------------------|--|
| Operator Dugan Production Corporation | | | Lease Pet. Inc. | | Well No. 6 |
| Unit Letter C | Section 36 | Township 28 North | Range 15 West | County San Juan | |
| Actual Footage Location of Well: 790 feet from the North line and 1850 feet from the West line | | | | | |
| Ground Level Elev. 5658 | Producing Formation Fruitland Coal | | Pool Basin-Fruitland Coal | | Dedicated Acreage: * 160 Acres |

1. Outline the acreage dedicated to the subject well by colored pencil or hachure marks on the plat below.
2. If more than one lease is dedicated to the well, outline each and identify the ownership thereof (both as to working interest and royalty).
3. If more than one lease of different ownership is dedicated to the well, have the interests of all owners been consolidated by communitization, unitization, force-pooling, etc?

() Yes () No If answer is "yes," type of consolidation
 If answer is "no," list the owners and tract descriptions which have actually consolidated. (Use reverse side of this form if necessary.)

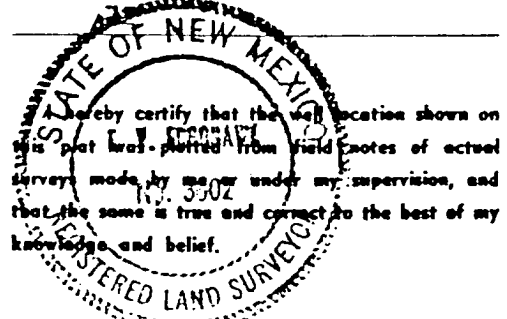
No allowable will be assigned to the well until all interests have been consolidated (by communitization, unitization, forced-pooling, or otherwise) or until a non standard unit, eliminating such interests, has been approved by the Commission.

*Application for Non-Standard Proration Unit being processed.

CERTIFICATION

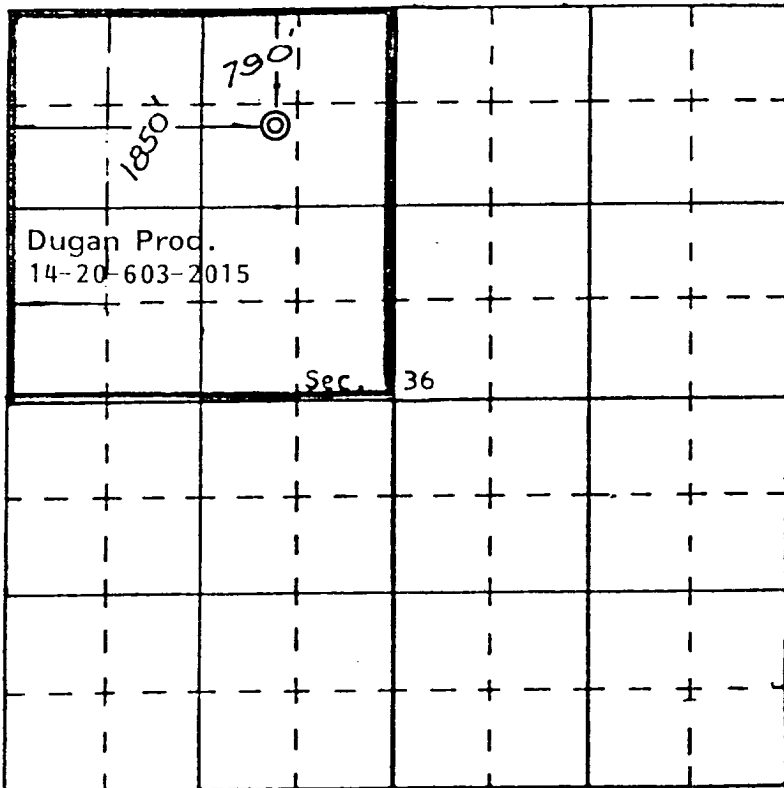
I hereby certify that the information contained herein is true and complete to the best of my knowledge and belief.

Jim L. Jacobs
 Name
Jim L. Jacobs
 Position
Geologist
 Company
Dugan Production Corp.
 Date **11-30-88**



Date Surveyed
January 13, 1970
 Registered Professional Engineer
 and/or Land Surveyor

E. V. Echohawk
 Certificate No. **3602**
E. V. Echohawk, L. S.



Handwritten note: "Mend 10/11 60/1000"

NEW MEXICO OIL CONSERVATION COMMISSION WELL LOCATION AND ACERAGE DEDICATION PLAT

All distances must be from the outer boundaries of the Section

| | | | | | |
|---|---|-----------------------------|-------------------------------|--|--|
| Operator Dugan Production Corporation | | Lease Pet. Inc. | | Well No. 6 | |
| Unit Letter C | Section 36 | Township 28 North | Range 15 West | County San Juan | |
| Actual Footage Location of Well: 790 feet from the North line and 1850 feet from the West line | | | | | |
| Ground Level Elev 5658 | Producing Formation Pictured Cliffs | | Pool Ojo ER Sand-PC | Dedicated Acreage: 160 Acres | |

- Outline the acreage dedicated to the subject well by colored pencil or hachure marks on the plat below.
- If more than one lease is dedicated to the well, outline each and identify the ownership thereof (both as to working interest and royalty),
- If more than one lease of different ownership is dedicated to the well, have the interests of all owners been consolidated by communitization, unitization, force-pooling, etc?

() Yes () No If answer is "yes," type of consolidation

RECEIVED
DEC 09 1988
OIL CON. DIV.
DIST. 3

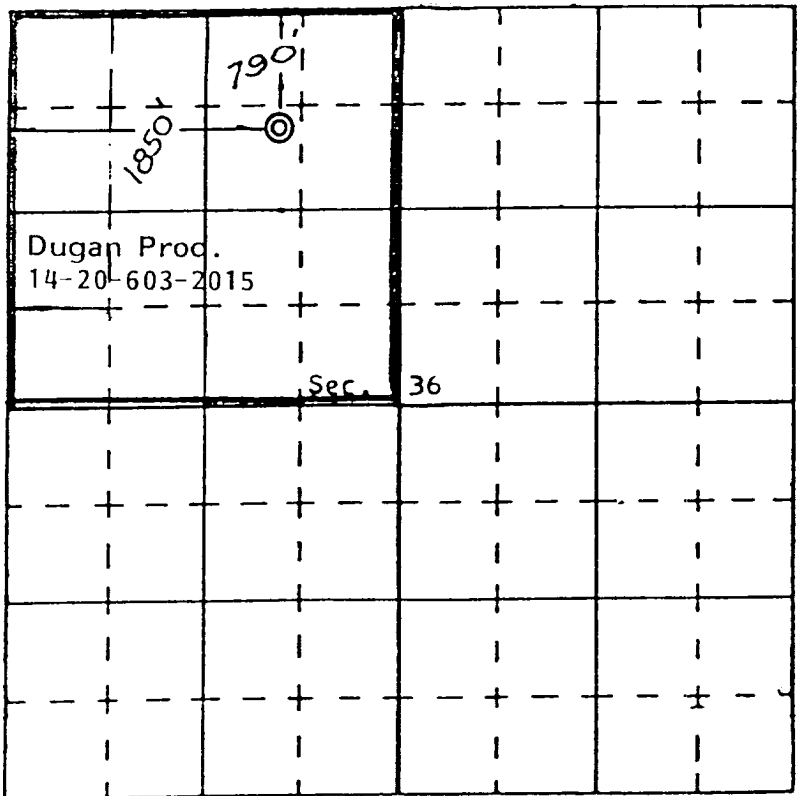
If answer is "no," list the owners and tract descriptions which have actually consolidated. (Use reverse side of this form if necessary.)

No allowable will be assigned to the well until all interests have been consolidated (by communitization, unitization, forced-pooling, or otherwise) or until a non standard unit, eliminating such interests, has been approved by the Commission.

CERTIFICATION

I hereby certify that the information contained herein is true and complete to the best of my knowledge and belief.

Jim L. Jacobs
Name _____
Position **Geologist**
Company **Dugan Production Corp.**
Date **11-30-88**



STATE OF NEW MEXICO
I hereby certify that the well location shown on this plat was plotted from field notes of actual surveys made by me or under my supervision, and that the same is true and correct to the best of my knowledge and belief.
REGISTERED LAND SURVEYOR

Date Surveyed
January 13, 1970
Registered Professional Engineer
and/or Land Surveyor

E. V. Echohawk
Certificate No. **3602**
E. V. Echohawk, L. S.