

**UNITED STATES
DEPARTMENT OF THE INTERIOR
GEOLOGICAL SURVEY**

APPLICATION FOR PERMIT TO DRILL, DEEPEN, OR PLUG BACK

1a. TYPE OF WORK

DRILL ☒DEEPEN ☐PLUG BACK ☐

b. TYPE OF WELL

OIL
WELL ☐GAS
WELL ☒

OTHER

SINGLE
ZONE ☐MULTIPLE
ZONE ☐

2. NAME OF OPERATOR

Dugan Production Corp.

3. ADDRESS OF OPERATOR

Box 234, Farmington, New Mexico 87401

4. LOCATION OF WELL (Report location clearly and in accordance with any State requirements.)*

At surface

1150' FSL — 1850' FWL

At proposed prod. zone

14. DISTANCE IN MILES AND DIRECTION FROM NEAREST TOWN OR POST OFFICE*

Nine miles south Fruitland, New Mexico

15. DISTANCE FROM PROPOSED*

LOCATION TO NEAREST

PROPERTY OR LEASE LINE, FT.

(Also to nearest drlg. unit line, if any)

1150'

16. NO. OF ACRES IN LEASE

2480

17. NO. OF ACRES ASSIGNED
TO THIS WELL

120

18. DISTANCE FROM PROPOSED LOCATION*
TO NEAREST WELL, DRILLING, COMPLETED,
OR APPLIED FOR, ON THIS LEASE, FT.

2000' approx

19. PROPOSED DEPTH

645'

20. ROTARY OR CABLE TOOLS

Rotary

21. ELEVATIONS (Show whether DF, RT, GR, etc.)

5665' GR

22. APPROX. DATE WORK WILL START*

4-1-75

23.

PROPOSED CASING AND CEMENTING PROGRAM

SIZE OF HOLE	SIZE OF CASING	WEIGHT PER FOOT	SETTING DEPTH	QUANTITY OF CEMENT
7-7/8"	5-1/2"	14#	20'	5 sx
4-3/4"	2-7/8"	5.9#	645'	20 sx

Drill well with air using slim hole technique to test Pictured Cliffs formation.
If productive, run 2-7/8" tubing for casing through formation, cement above
formation packer shoe, clean out, run 1" tubing, and complete well.

IN ABOVE SPACE DESCRIBE PROPOSED PROGRAM: If proposal is to deepen or plug back, give data on present productive zone and proposed new productive zone. If proposal is to drill or deepen directionally, give pertinent data on subsurface locations and measured and true vertical depths. Give blowout preventer program, if any.

24.

Original signed by T. A. Dugan

SIGNED

Thomas A. Dugan

TITLE Petroleum Engineer

DATE 3-18-75

(This space for Federal or State office use)

PERMIT NO.

APPROVAL DATE

APPROVED BY

TITLE

DATE

CONDITIONS OF APPROVAL, IF ANY:

Inde c-100 for NSU

*See Instructions On Reverse Side

**NEW MEXICO OIL CONSERVATION COMMISSION
WELL LOCATION AND ACREAGE DEDICATION PLAT**

Form C-102
Supersedes C-128
Effective 1-1-65

All distances must be from the outer boundaries of the Section.

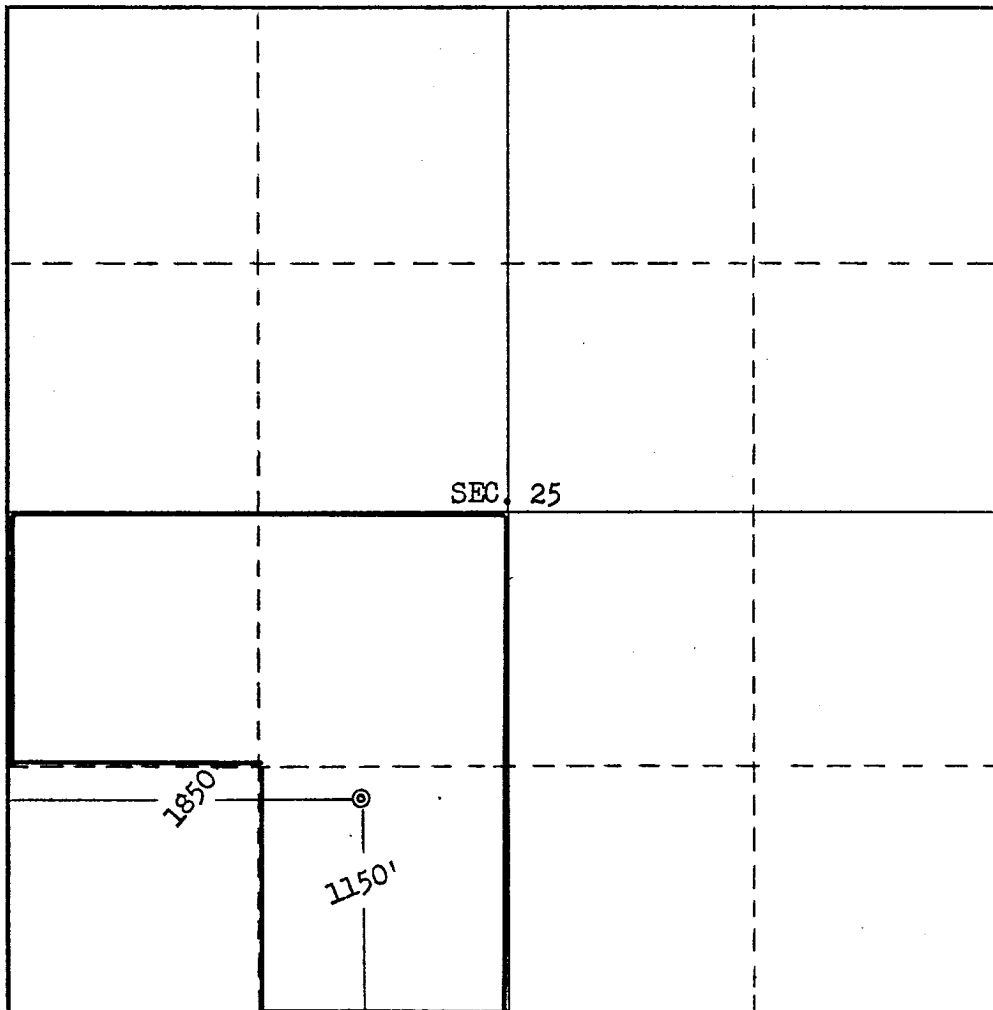
Operator Dugan Production Corporation			Lease Pet. Inc.		Well No. 9
Unit Letter N	Section 25	Township 28 North	Range 15 West	County San Juan	
Actual Footage Location of Well: 1150 feet from the South line and 1850 feet from the West line					
Ground Level Elev. 5665	Producing Formation Pictured Cliffs	Pool Undesignated - P.C.		Dedicated Acreage: 120 Acres	

1. Outline the acreage dedicated to the subject well by colored pencil or hachure marks on the plat below.
2. If more than one lease is dedicated to the well, outline each and identify the ownership thereof (both as to working interest and royalty).
3. If more than one lease of different ownership is dedicated to the well, have the interests of all owners been consolidated by communitization, unitization, force-pooling, etc?

☐ Yes ☐ No If answer is "yes," type of consolidation _____

If answer is "no," list the owners and tract descriptions which have actually been consolidated. (Use reverse side of this form if necessary.) _____

No allowable will be assigned to the well until all interests have been consolidated (by communitization, unitization, forced-pooling, or otherwise) or until a non-standard unit, eliminating such interests, has been approved by the Commission.

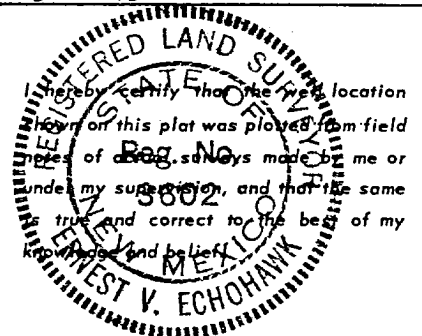


CERTIFICATION

I hereby certify that the information contained herein is true and complete to the best of my knowledge and belief.

Original signed by **T. A. Dugan**

Name
Thomas A. Dugan
Position
Petroleum Engineer
Company
Dugan Production Corp.
Date
3-18-75



Date Surveyed
March 12, 1975
Registered Professional Engineer and/or Land Surveyor

E.V. Echohawk

Certificate No. 3602
E.V. Echohawk LS

