

UNITED STATES
DEPARTMENT OF THE INTERIOR

GEOLOGICAL SURVEY

APPLICATION FOR PERMIT TO DRILL, DEEPEN, OR PLUG BACK

1a. TYPE OF WORK

DRILL ☒DEEPEN ☐PLUG BACK ☐

b. TYPE OF WELL

OIL
WELL ☐GAS
WELL ☒

OTHER

SINGLE
ZONE ☐MULTIPLE
ZONE ☐

2. NAME OF OPERATOR

Energy Reserves Group, Inc.

3. ADDRESS OF OPERATOR

P. O. Box 3280, Casper, Wyoming 82602

4. LOCATION OF WELL (Report location clearly and in accordance with any State requirements.)*

At surface

950' FNL, 1770' FWL (SW NE NW)

At proposed prod. zone

14. DISTANCE IN MILES AND DIRECTION FROM NEAREST TOWN OR POST OFFICE*

About 6½ miles south & 3 miles east of Farming-

15. DISTANCE FROM PROPOSED*

LOCATION TO NEAREST
PROPERTY OR LEASE LINE, FT.
(Also to nearest drig. unit line, if any)

NA

16. NO. OF ACRES IN LEASE

Unitized

17. NO. OF ACRES ASSIGNED
TO THIS WELL

160

18. DISTANCE FROM PROPOSED LOCATION*

TO NEAREST WELL, DRILLING, COMPLETED,
OR APPLIED FOR, ON THIS LEASE, FT.

2500'

19. PROPOSED DEPTH

1320'

20. ROTARY OR CABLE TOOLS

Rotary

21. ELEVATIONS (Show whether DF, RT, GR, etc.)

5568' GRD

22. APPROX. DATE WORK WILL START*

November, 1976

23.

PROPOSED CASING AND CEMENTING PROGRAM

SIZE OF HOLE	SIZE OF CASING	WEIGHT PER FOOT	SETTING DEPTH	QUANTITY OF CEMENT
9-7/8"	7"	17#	100'	50 sks
6½"	4½"	9.5#	1320'	75 sks

Energy Reserves Group, Inc. proposes to drill the above well with rotary tools from surface to TD. The anticipated zone of completion is the Pictured Cliffs formation. No cores or DST's are planned. Copies of all logs run will be furnished upon completion of the well. Copies of the location plat are attached. The estimated tops are as follows:

Kirtland	15'
Pictured Cliffs ss	1225'
TD	1320'

A Series 600 or 900 BOP will be used while drilling this well.

The gas is dedicated.

IN ABOVE SPACE DESCRIBE PROPOSED PROGRAM: If proposal is to deepen or plug back, give data on present productive zone and proposed new productive zone. If proposal is to drill or deepen directionally, give pertinent data on subsurface locations and measured and true vertical depths. Give blowout preventer program, if any.

24.

SIGNED

Wear B. Barnes

TITLE

RMD Production Engineer

DATE

October 28, 1976

(This space for Federal or State office use)

PERMIT NO.

APPROVAL DATE

APPROVED BY

TITLE

DATE

CONDITIONS OF APPROVAL, IF ANY:

OK

*See Instructions On Reverse Side

OCT 6 1976

RMD CASPER 273

Gallegos Canyon Unit-~~10~~

San Juan

West

160

160

- Sept 27, 1977

Attachment with Form 9-331-C

1. The geologic name of the surface formation is the Ojo Alamo formation.
2. The estimated tops of the important geologic markers in this well are:

Kirtland	15'
Pictured Cliffs	1225'
TD	1320'
3. It is anticipated that the Pictured Cliffs formation will be gas bearing.
4. The proposed casing program is as follows:
Set 7" 17# used casing at 100'+ and cement back to surface with 50 sks cement. Set 4½" 9.5# second hand casing at 1320'+ (in a 6½" hole) and cement with 75 sks cement. Est. cement top at 700'+.
5. Pressure control equipment consists of the following:
A Shaffer type - double ram BOP - hydraulically operated - 10" 600 or 900 series. The BOP will be pressure tested to 400 psi after installation and prior to drilling out from under surface casing. See Attachment #1.
6. Well is to be drilled with gel mud plus required additives for hole conditions and formations to be drilled. Normally, about 30-40 sacks of gel will be on location at any one time. There is no need for weighting material.
7. Auxiliary equipment - a float at the bit and a full opening floor valve to stab into the drill pipe.
8. No coring is planned. No DST's are planned. It is planned to run only the IES log from TD to base of surface casing.
9. No abnormal pressures or temperatures are anticipated. H₂S is not a potential problem in this area.
10. It is planned to commence drilling operations soon after regulatory approval has been received. It is planned to drill this well along with about ten (10) others yet this year. It is estimated it will take 6 days to drill and log this well.

NTL-6

1. Existing Roads :

- a. See Attachment #2
- b. about 6 miles south and 5 miles east of Farmington.
- c. Covered in a. and b.
- d. Not applicable - development well.
- e. See attachment #2
- f. Existing roads are in good condition, and will not require any improvements or maintenance.

2. Planned Access roads :

It will not be necessary to construct any access roads.

- (1) Width of driving area limited to 16 \pm .
- (2) Area is flat.
- (3)(4)(5)(6)(7) Not required.

3. Location of existing wells :

Wells indicated on Attachment #2 are producing wells operated by Energy Reserves Group, Inc.

4. Location of Existing and/or Proposed Facilities :

- a. (1) None
- (2) At each well
- (3) None
- (4) El Paso has gathering lines to each well.
- (5) None

NTL-6

9. Well site Layout :

- (1) See attachment #3
- (2) See attachment #4
- (3) See attachment #4
- (4) It is not planned to line pits.

10. Plans for restoration of Surface :

As soon as pit is dried up, it will be filled in and the surface leveled and contoured to surrounding terrain.

11. Other information :

- (1) Topography at well site and access road is very flat. The soil is sandy and the vegetation is very sparse.
- (2) None
- (3) None

12. Lessee's or Operator's representative :

Mr. T.C. Durham is the Foreman who will represent Energy Reserves Group, Inc. during our drilling and clean up operations in connection with this well. He lives in Farmington, New Mexico. His address and phone no's are as follows :

Home	- 1205 Camino Largo	ph.505-325-7978
Office	- Box 977	ph.505-327-1639
Contact	- Unit 539	ph.505-325-1873

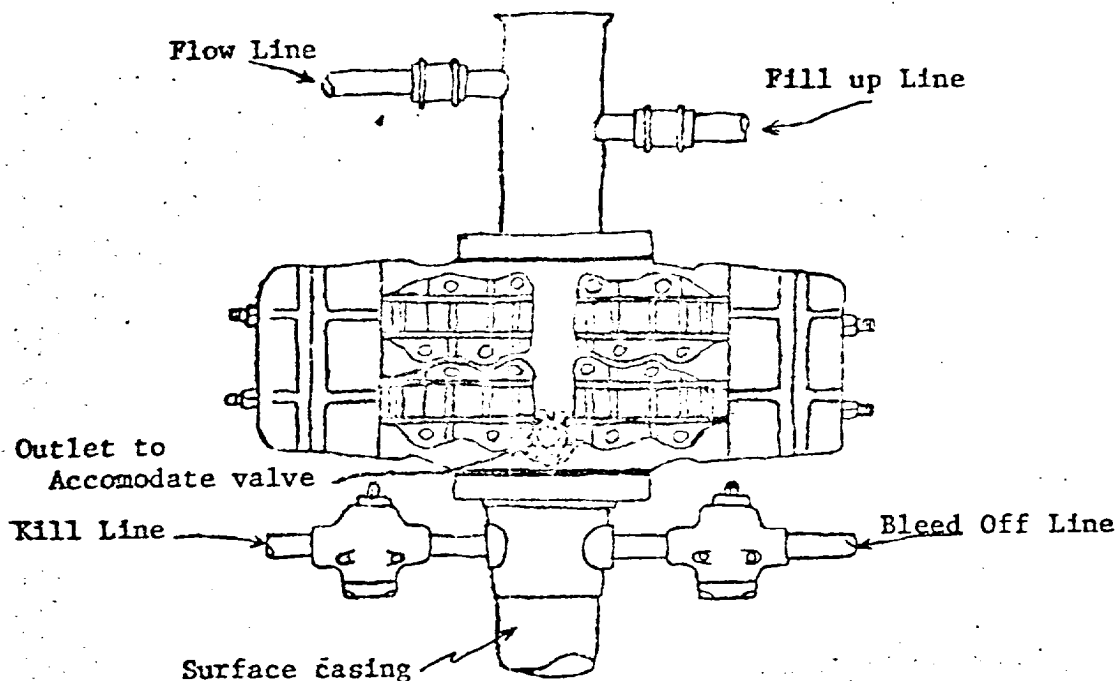
CERTIFICATION

I hereby certify that I, or persons under my direct supervision, have inspected the proposed drillsite and access route; that I am familiar with the conditions which presently exist; that the statements made in this plan are, to the best of my knowledge, true and correct; and, that the work associated with the operations proposed herein will be performed by _____

FRANK FRANK
and its contractors and subcontractors in conformity with this plan and the terms and conditions under which it is approved.

10-5-76
Date

W. S. Sullivan Foreman
Name and Title



Blowout preventer is Shaffer double hydraulic equipped with drill pipe rams in the top and blind rams in the bottom.

Blowout preventer closing unit is Kookey 30 gallon accumulator unit.

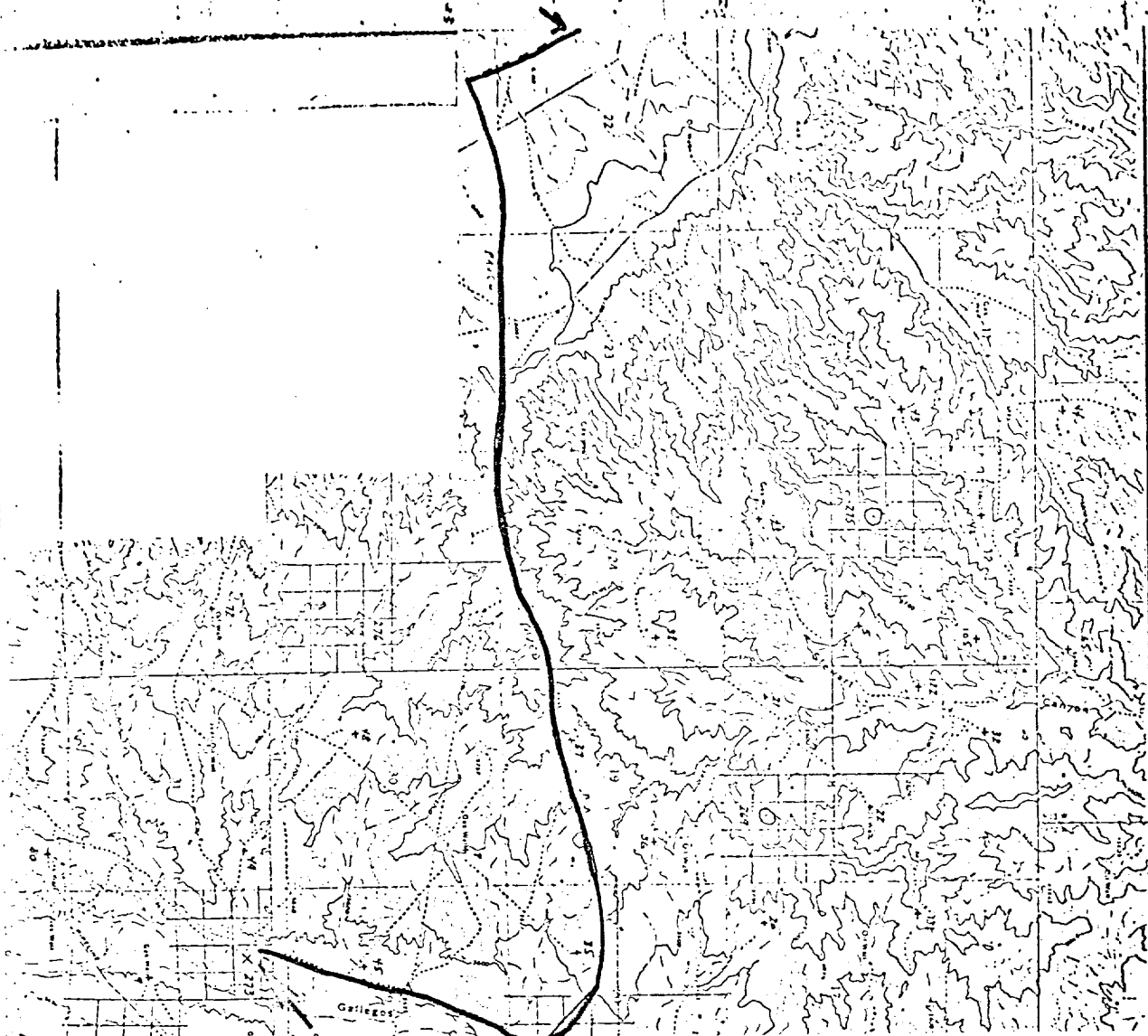
When choke manifold is used, it will be installed downstream from bleed off valve.

Kill line or bleed off line may be installed at flanged opening in blowout preventer.

13W

12W

Route #371
+
FARMINGTON



Attachment #3

Energy Reserves Group, Inc.
GCU-PC # 273
950' FW & 1770' FW SEC 32-28N-12W
San Juan County, New Mexico

