

UNITED STATES
DEPARTMENT OF THE INTERIOR
GEOLOGICAL SURVEY30-045-22286
5. LEASE DESIGNATION AND SERIAL NO.

SF-078863

APPLICATION FOR PERMIT TO DRILL, DEEPEN, OR PLUG BACK

1a. TYPE OF WORK

DRILL ☒DEEPEN ☐PLUG BACK ☐

b. TYPE OF WELL

OIL
WELL ☐GAS
WELL ☒

OTHER

SINGLE
ZONE ☒MULTIPLE
ZONE ☐

2. NAME OF OPERATOR

R & G DRILLING CO.

3. ADDRESS OF OPERATOR

c/o Walsh Engineering & Prod. Corp.
P. O. Box 254, Farmington, N.M. 87401

4. LOCATION OF WELL (Report location clearly and in accordance with any State requirements.)*

At surface

810'FNL, 1850'FEL

At proposed prod. zone

Same

14. DISTANCE IN MILES AND DIRECTION FROM NEAREST TOWN OR POST OFFICE*

15. DISTANCE FROM PROPOSED*

LOCATION TO NEAREST
PROPERTY OR LEASE LINE, FT.
(Also to nearest drlg. unit line, if any)

3430'

16. NO. OF ACRES IN LEASE

17. NO. OF ACRES ASSIGNED
TO THIS WELL

160

18. DISTANCE FROM PROPOSED LOCATION*

TO NEAREST WELL, DRILLING, COMPLETED,
OR APPLIED FOR, ON THIS LEASE, FT.

2500'

19. PROPOSED DEPTH

2150

20. ROTARY OR CABLE TOOLS

Rotary

21. ELEVATIONS (Show whether DF, RT, GR, etc.)

5993 GR

22. APPROX. DATE WORK WILL START*

12-15-76

23.

PROPOSED CASING AND CEMENTING PROGRAM

SIZE OF HOLE	SIZE OF CASING	WEIGHT PER FOOT	SETTING DEPTH	QUANTITY OF CEMENT
12-1/4	8-5/8	24.0	90	100 SXS
7-7/8	4-1/2	10.50	2150	150 SXS

Surface formation is Animas.

Top of Ojo Alamo sand is at 980'.

Top of Pictured Cliffs sand is at 1970'.

A fresh water mud system will be used for drilling to production casing point.

It is anticipated that IES log will be run at total depth.

No abnormal pressures or poisonous gases are anticipated in this well.

It is expected that this well will be drilled before 12-31-76. This depends on time required for approvals, rig availability and the weather.

We will follow the surface restoration plan set out by the appropriate surface agency and the U.S.G.S.

Gas is dedicated
The NE/4 Section 33-T28N-R10W is dedicated to this well.

IN ABOVE SPACE DESCRIBE PROPOSED PROGRAM: If proposal is to deepen or plug back, give data on present productive zone and proposed new productive zone. If proposal is to drill or deepen directionally, give pertinent data on subsurface locations and measured and true vertical depths. Give blowout preventer program, if any.

24. FOR: R&G Drilling Co.

President, Walsh Engineering &

Production Corporation

DATE Dec. 3, 1976

SIGNED

Ewell N. Walsh, P.E.

TITLE

(This space for Federal or State office use)

PERMIT NO.

APPROVED BY

CONDITIONS OF APPROVAL, IF ANY:

TITLE

DATE

*See Instructions On Reverse Side

**NEW MEXICO OIL CONSERVATION COMMISSION
WELL LOCATION AND ACERAGE DEDICATION PLAT**

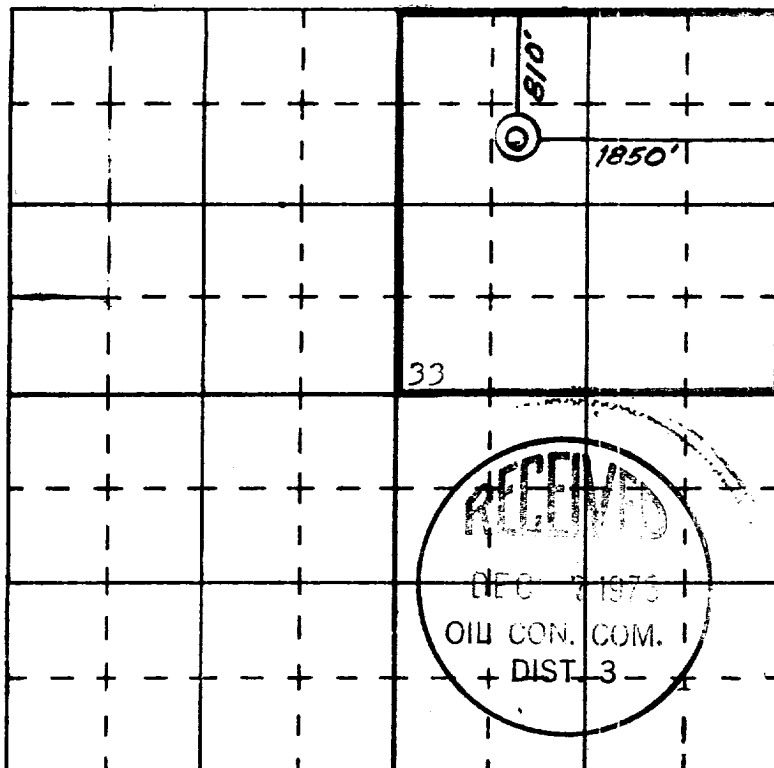
All distances must be from the outer boundaries of the Section

Operator R AND G DRILLING COMPANY			Lease KRAUSE		Well No. 60
Unit Letter B	Section 33	Township 28 NORTH	Range 11 WEST	County SAN JUAN	
Actual Footage Location of Well: <div style="display: flex; justify-content: space-between;"> 810 feet from the NORTH line and 1850 feet from the EAST line </div>					
Ground Level Elev. 5993	Producing Formation Pictured Cliffs		Pool Kutz P. C. West	Dedicated Acreage: 160 Acres	

1. Outline the acreage dedicated to the subject well by colored pencil or hachure marks on the plat below.
2. If more than one lease is dedicated to the well, outline each and identify the ownership thereof (both as to working interest and royalty).
3. If more than one lease of different ownership is dedicated to the well, have the interests of all owners been consolidated by communitization, unitization, force-pooling, etc?
☐ Yes ☐ No If answer is "yes," type of consolidation _____

If answer is "no," list the owners and tract descriptions which have actually consolidated. (Use reverse side of this Form if necessary.) _____

No allowable will be assigned to the well until all interests have been consolidated (by communitization, unitization, forced-pooling, or otherwise) or until a non standard unit, eliminating such interests, has been approved by the Commission.



CERTIFICATION

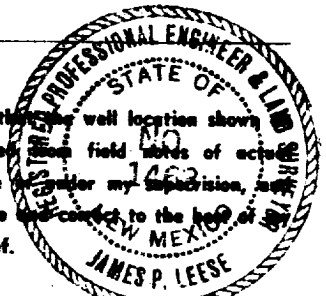
I hereby certify that the information contained herein is true and complete to the best of my knowledge and belief.
For: R&G Drilling Co.

Name **Ewell H. Walsh, P. E.**
 Position **President, Walsh Engr. & Prod. Corp.**

Company **December 3, 1976**

Date _____

I hereby certify that the well location shown on this plat was plotted from field notes of actual surveys made by me under my supervision, and that the same is true and correct to the best of my knowledge and belief.



Date Surveyed **24 November 1976**
 Registered Professional Engineer and/or Land Surveyor **James P. Leese**

1463

Certificate No. _____

DEVELOPMENT PLAN

R&G DRILLING COMPANY

KRAUSE NO. 60

1. Existing roads shown on attached plat.
2. Planned access from existing road is approximately to new location.
3. Location - Krause No. 60
810'FNL, 1850'FEL
Sec. 33-T28N-R10W
San Juan County, New Mexico
4. One additional well is planned on this lease at this time.
5. Production equipment or storage facilities proposed for the well will be installed on location.
6. Water will be obtained from: San Juan River
NW4 Sec. 27-T29N-R11W
7. Waste materials will be buried on location or in reserve pit.
8. No permanent camp is planned. A trailer house will be used on location during drilling process.
9. No airstrip proposed.
10. See attached plat for layout.
11. Pits will be filled, location cleaned up, and area not in use for producing well will be reseeded using broadcast method of planting.

12. Lessee's or operator's representative.

Ewell N. Walsh: 325-8203; Radio Dispatch 325-1873, Car 620.
Address: P. O. Box 254, Farmington, New Mexico 87401

13. CERTIFICATION:

I hereby certify that I, or persons under my direct supervision, have inspected the proposed drillsite and access route; that I am familiar with the conditions which presently exist; that the statements made in this plan are, to the best of my knowledge, true and correct; and, that the work associated with the operations proposed herein will be performed by: R & G

DRILLING COMPANY

and its contractors and subcontractors in conformity with this plan and the terms and conditions under which it is approved.



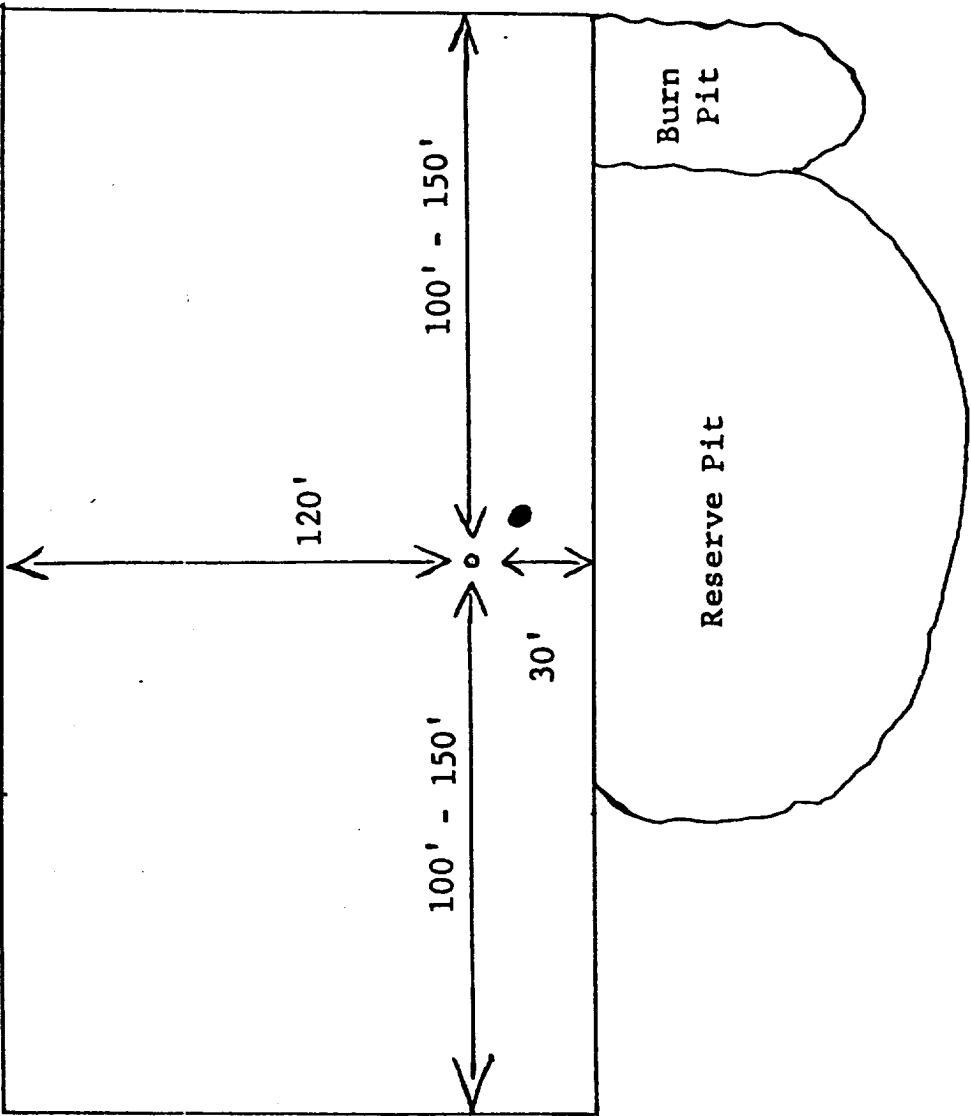
Ewell N. Walsh, P.E., President,
Walsh Engineering & Production
Corporation

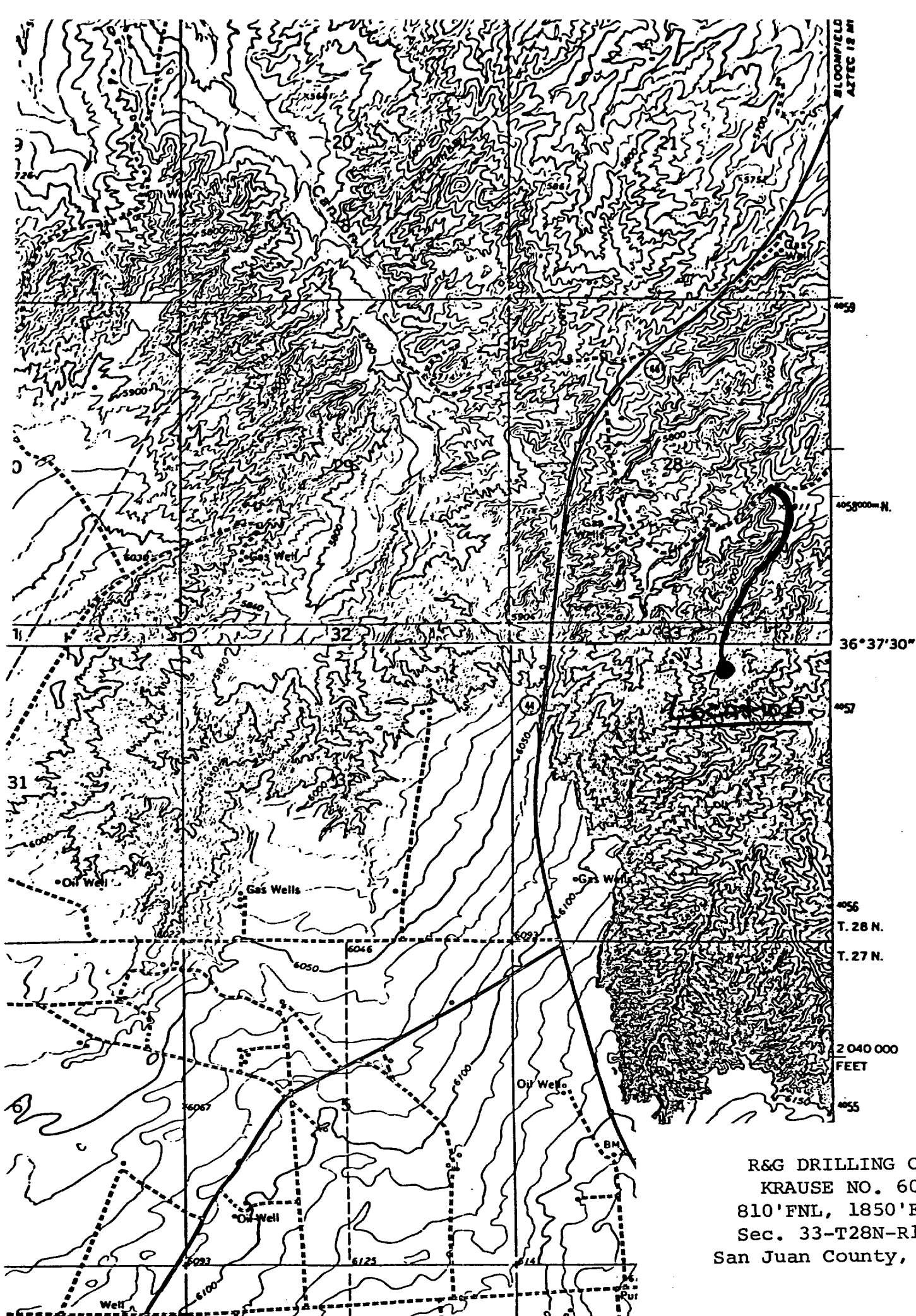
R&G DRILLING CO.
KRAUSE NO. 60
NE/4 Sec. 33-T28N-R10W
San Juan County, N. M.

SEVEN POINT WELL CONTROL PROGRAM

1. Surface Casing.
See Application for Permit to Drill.
2. Spools and Flanges.
 - A. Surface Casing - Scwd., Series 600 , 2000 psi W.P.
 - B. Production, Scwd., Series 600, 2000 psi W.P.
 - C. Tubing Head - Series 600, 2000 psi. W.P.
3. Intermediate Casing.
None
4. Blowout Preventers
Production Hole - 8", 3000 psi
Fill, kill and choke manifold - 5000 psi. W.P.
5. Additional Equipment (If necessary)
 - A. Kelly Cock
 - B. Bit Float
 - C. Degasser
 - D. Pit Level Indicator
 - E. Sub with Valve for drill pipe.
6. Anticipated Bottom Hole Pressure.
800 psi. Current mud program is for 9.2 lb./gal mud with hydrostatic head of 1100 psi at 2150 feet. Mud weight will be increased if necessary for higher pressures.
7. Drilling Fluid.
Native mud with gel-chemical for logging.

R&G DRILLING CO.
KRAUSE NO. 60
810'FNL, 1850'FEL
Sec. 33-T28N-R10W
San Juan County, N. M.





R&G DRILLING CO.
KRAUSE NO. 60
810'FNL, 1850'FEL
Sec. 33-T28N-R10W
San Juan County, N. M.