

UNITED STATES
DEPARTMENT OF THE INTERIOR
GEOLOGICAL SURVEY

APPLICATION FOR PERMIT TO DRILL, DEEPEN, OR PLUG BACK

1a. TYPE OF WORK

DRILL ☒DEEPEN ☐PLUG BACK ☐

b. TYPE OF WELL

OIL
WELL ☐GAS
WELL ☒

OTHER

SINGLE
ZONE ☒MULTIPLE
ZONE ☐

2. NAME OF OPERATOR

R & G Drilling Company

3. ADDRESS OF OPERATOR c/o Walsh Engineering & Production Corp.

P.O. Box 254 Farmington New Mexico 87401

4. LOCATION OF WELL (Report location clearly and in accordance with any State requirements.)*

At surface

800' ^{FSU} FWL

At proposed prod. zone

Same

14. DISTANCE IN MILES AND DIRECTION FROM NEAREST TOWN OR POST OFFICE*

15. DISTANCE FROM PROPOSED*

LOCATION TO NEAREST
PROPERTY OR LEASE LINE, FT.
(Also to nearest drig. unit line, if any)

800'

16. NO. OF ACRES IN LEASE

-

17. NO. OF ACRES ASSIGNED
TO THIS WELL

160

18. DISTANCE FROM PROPOSED LOCATION*
TO NEAREST WELL, DRILLING, COMPLETED,
OR APPLIED FOR, ON THIS LEASE, FT.

-

19. PROPOSED DEPTH

1605

20. ROTARY OR CABLE TOOLS

Rotary

21. ELEVATIONS (Show whether DF, RT, GR, etc.)

5616' GR

22. APPROX. DATE WORK WILL START*

2-1-78

23.

PROPOSED CASING AND CEMENTING PROGRAM

SIZE OF HOLE	SIZE OF CASING	WEIGHT PER FOOT	SETTING DEPTH	QUANTITY OF CEMENT
12-1/4	8-5/8	24.0	100	125 sxs
7-7/8 or 6-3/4	4-1/2	10.50	1605	to be determined

It is proposed to drill this well with rotary tools, and using drilling drilling mud as a circulating medium., through the Fruitland Formation. Possible productive intervals in the Fruitland Formations will be completed. Productive casing will be cemented in such a manner to protect all possible productive intervals and water sand.

Estimated Formation Tops

Ojo Alamo- 500'

Kirtland-570'

Fruitland-1100'

The SW/4 of Section 22 will be dedicated to this well.
The natural gas from this well is committed.

IN ABOVE SPACE DESCRIBE PROPOSED PROGRAM: If proposal is to deepen or plug back, give data on present productive zone and proposed new productive zone. If proposal is to drill or deepen directionally, give pertinent data on subsurface locations and measured and true vertical depths. Give blowout preventer program, if any.

24. FOR: R & G Drilling Co

SIGNATURE

Ewell N. Walsh, P.E.

TITLE

President, Walsh
Engineering & Production Corp.

DATE

January 11, 1978

(This space for Federal or State office use)

PERMIT NO.

APPROVAL DATE

APPROVED BY

TITLE

DATE

CONDITIONS OF APPROVAL, IF ANY:

Okal

RECEIVED

JAN 10 1978

*See Instructions On Reverse Side

U.S. Geological Survey
Farmington, N.M.

**NEW MEXICO OIL CONSERVATION COMMISSION
WELL LOCATION AND ACREAGE DEDICATION PLAT**

Form C-102
Supersedes C-128
Effective 1-1-65

All distances must be from the outer boundaries of the Section.

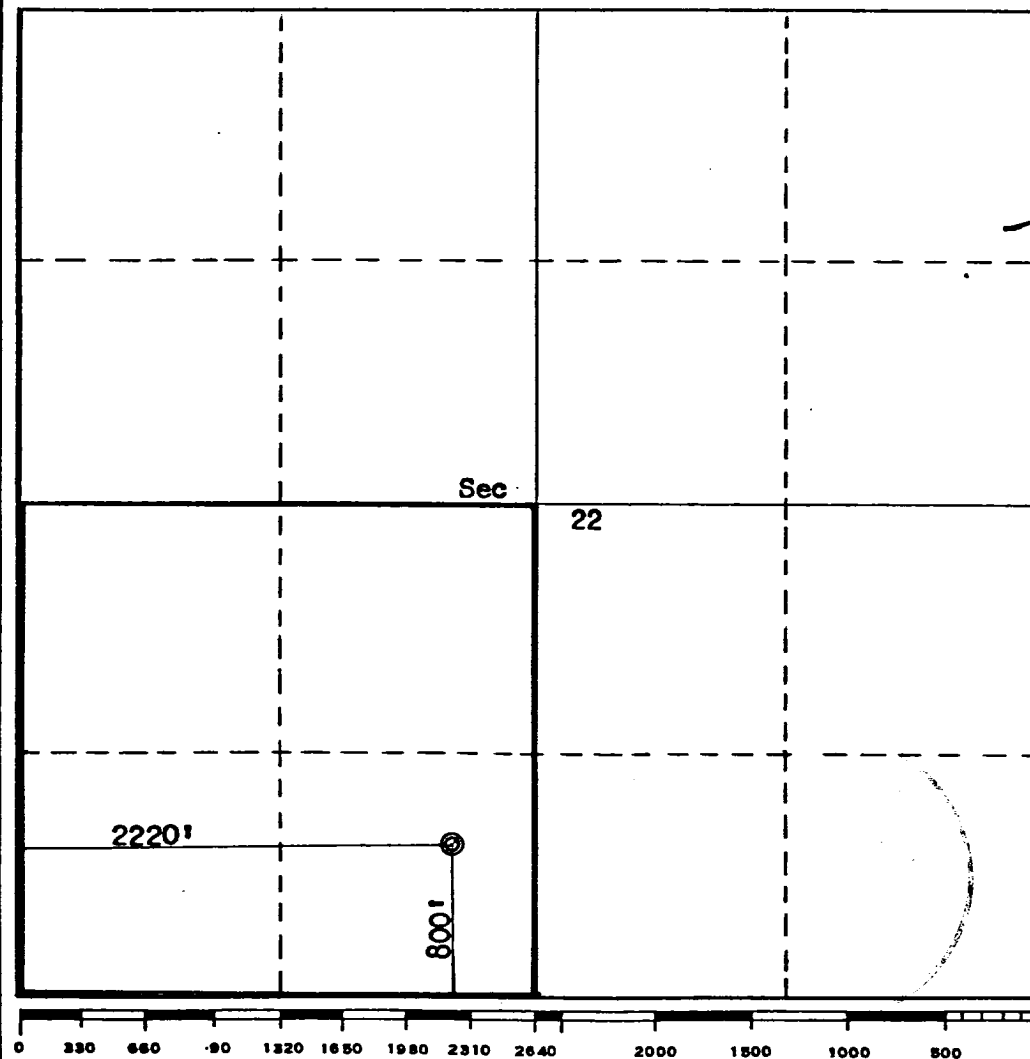
Operator R & G Drilling Company			Lease Phillips		Well No. 67
Unit Letter N	Section 22	Township 28N	Range 11W	County San Juan	
Actual Footage Location of Well: 800 feet from the South line and 2220 feet from the West line					
Ground Level Elev. 5616	Producing Formation Fruitland		Pool Kutz Fruitland	Dedicated Acreage: 160.0 Acres	

1. Outline the acreage dedicated to the subject well by colored pencil or hachure marks on the plat below.
2. If more than one lease is dedicated to the well, outline each and identify the ownership thereof (both as to working interest and royalty).
3. If more than one lease of different ownership is dedicated to the well, have the interests of all owners been consolidated by communitization, unitization, force-pooling, etc?

☐ Yes ☐ No If answer is "yes," type of consolidation _____

If answer is "no," list the owners and tract descriptions which have actually been consolidated. (Use reverse side of this form if necessary.) _____

No allowable will be assigned to the well until all interests have been consolidated (by communitization, unitization, forced-pooling, or otherwise) or until a non-standard unit, eliminating such interests, has been approved by the Commission.



CERTIFICATION

I hereby certify that the information contained herein is true and complete to the best of my knowledge and belief.
For: *[Signature]*

Name: **Ewell N. Walsh, P.E.**
Position: **President**

Company: **Walsh Engineering & Production Corp.**
Date: **January 11, 1978**

I hereby certify that the well location shown on this plat was plotted from field notes of actual surveys made by me or under my supervision, and that the same is true and correct to the best of my knowledge and belief.

Date Surveyed: **August 31, 1977**

Registered Professional Engineer and/or Land Surveyor
[Signature]
Fred B. Kerr Jr.

Certificate No. **3950**