

UNITED STATES
DEPARTMENT OF THE INTERIOR
GEOLOGICAL SURVEY30-045-22885
5. LEASE DESIGNATION AND SERIAL NO.

SF-078673

6. IF INDIAN, ALLOTTEE OR TRIBE NAME

7. UNIT AGREEMENT NAME

8. FARM OR LEASE NAME

Schlosser

9. WELL NO.

66

10. FIELD AND POOL, OR WILDCAT

Kutz Fruitland

11. SEC., T., R., M., OR BLK.
AND SURVEY OR AREA

Sec. 27-T28N-R4W 11W

N.M.P.M.

12. COUNTY OR PARISH

San Juan

13. STATE

N.M.

1a. TYPE OF WORK

DRILL ☒DEEPEN ☐PLUG BACK ☐

b. TYPE OF WELL

OIL
WELL ☐GAS
WELL ☒

OTHER

SINGLE
ZONE ☒MULTIPLE
ZONE ☐

2. NAME OF OPERATOR

R & G Drilling Company

3. ADDRESS OF OPERATOR

c/o Walsh Engineering & Production Corp.

P.O. Box 254 Farmington New Mexico 87401

4. LOCATION OF WELL (Report location clearly and in accordance with any State requirements.)

At surface

560' FNL, 330' FWL

At proposed prod. zone

Same

14. DISTANCE IN MILES AND DIRECTION FROM NEAREST TOWN OR POST OFFICE*

15. DISTANCE FROM PROPOSED*

LOCATION TO NEAREST
PROPERTY OR LEASE LINE, FT.
(Also to nearest drg. unit line, if any)

330'

16. NO. OF ACRES IN LEASE

-

17. NO. OF ACRES ASSIGNED
TO THIS WELL

160

18. DISTANCE FROM PROPOSED LOCATION*
TO NEAREST WELL, DRILLING, COMPLETED,
OR APPLIED FOR, ON THIS LEASE, FT.

-

19. PROPOSED DEPTH

1570

20. ROTARY OR CABLE TOOLS

Rotary

21. ELEVATIONS (Show whether DF, RT, GR, etc.)

5655' GR

22. APPROX. DATE WORK WILL START*

2-1-78

23.

PROPOSED CASING AND CEMENTING PROGRAM

SIZE OF HOLE	SIZE OF CASING	WEIGHT PER FOOT	SETTING DEPTH	QUANTITY OF CEMENT
12 1/4	8 5/8	24.0	100	125 SXS
77/8 or 63/4	4 1/2	10.50	1570	to be determined

It is proposed to drill this well with rotary tools, and using drilling mud as a circulating medium., through the Fruitland Formation. Possible productive intervals in the Fruitland Formations will be completed. Productive casing will be cemented in such a manner to protect all possible productive intervals and water sand.

Estimated Formation Tops

Ojo Alamo-460'

Kirtland-530'

Fruitland-1080'

The NW/4 of Section 27 will be dedicated to this well. The
The natural gas from this well is committed.

IN ABOVE SPACE DESCRIBE PROPOSED PROGRAM: If proposal is to deepen or plug back, give data on present productive zone and proposed new productive zone. If proposal is to drill or deepen directionally, give pertinent data on subsurface locations and measured and true vertical depths. Give blowout preventer program, if any.

24. For: R & G Drilling Company

Well of Walsh, P.E.

(This space for Federal or State office use)

TITLE President, Walsh
Engineering & Production Corp.

DATE January 10, 1978

PERMIT NO.

APPROVAL DATE

APPROVED BY

TITLE

DATE

CONDITIONS OF APPROVAL, IF ANY:

RECEIVED

JAN 19 1978

*See Instructions On Reverse Side

**NEW MEXICO OIL CONSERVATION COMMISSION
WELL LOCATION AND ACREAGE DEDICATION PLAT**

Form C-102
Supersedes C-128
Effective 1-1-65

All distances must be from the outer boundaries of the Section.

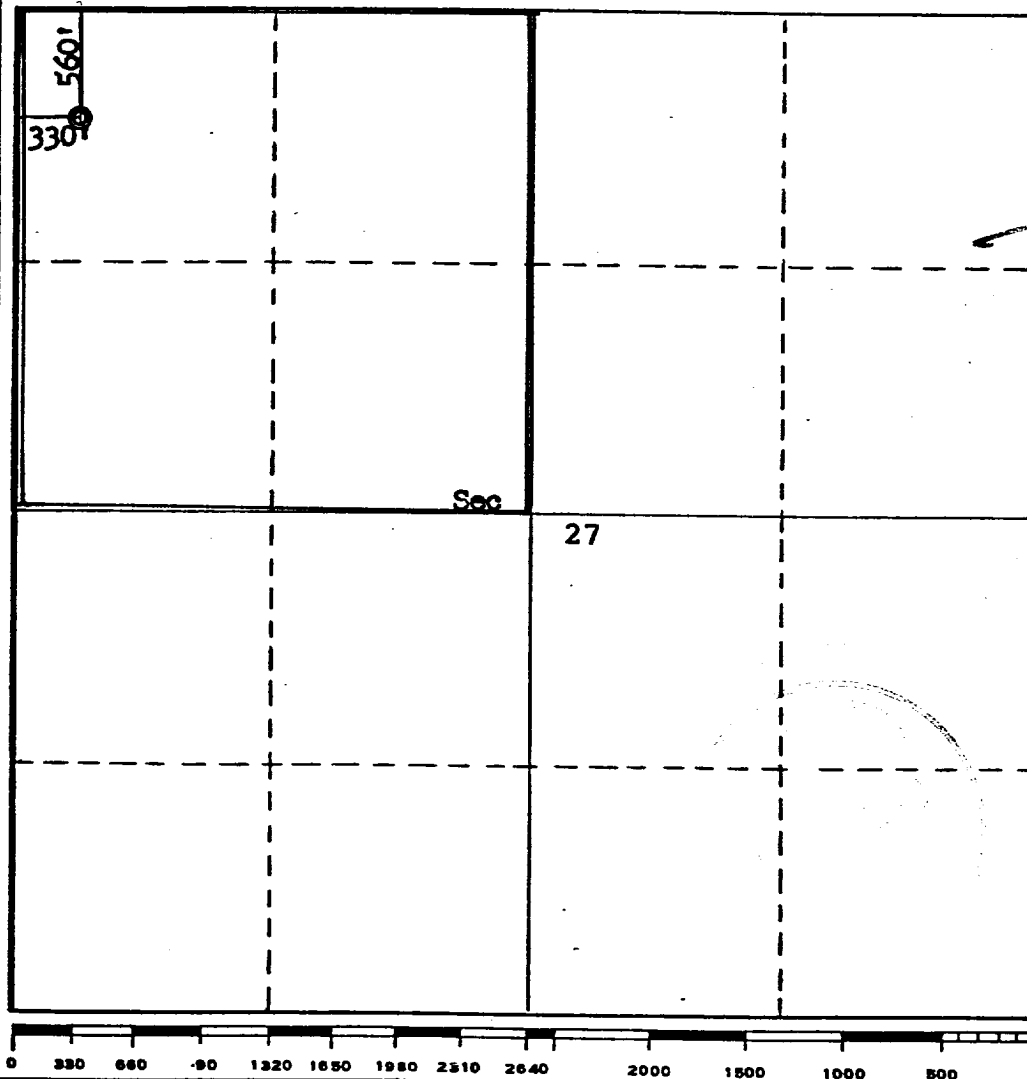
Operator R & G Drilling Company			Lease Schlosser		Well No. 66
Unit Letter D	Section 27	Township 28N	Range 11W	County San Juan	
Actual Footage Location of Well: 560 feet from the North line and 330 feet from the West line					
Ground Level Elev. 5655	Producing Formation Fruitland		Pool Kutz Fruitland		Dedicated Acreage 160 Acres

1. Outline the acreage dedicated to the subject well by colored pencil or hatchure marks on the plat below.
2. If more than one lease is dedicated to the well, outline each and identify the ownership thereof (both as to working interest and royalty).
3. If more than one lease of different ownership is dedicated to the well, have the interests of all owners been consolidated by communitization, unitization, force-pooling, etc?

☐ Yes ☐ No If answer is "yes," type of consolidation _____

If answer is "no," list the owners and tract descriptions which have actually been consolidated. (Use reverse side of this form if necessary.) _____

No allowable will be assigned to the well until all interests have been consolidated (by communitization, unitization, forced-pooling, or otherwise) or until a non-standard unit, eliminating such interests, has been approved by the Commission.



CERTIFICATION

I hereby certify that the information contained herein is true and complete to the best of my knowledge and belief.
FOR: **R & G Drilling Co.**

Name **Ewell N. Walsh, P.E.**
Position **President**

Company **Walsh Engineering & Production Corp.**
Date **January 10, 1978**

I hereby certify that the well location shown on this plat was plotted from field notes of actual surveys made by me or under my supervision, and that the same is true and correct to the best of my knowledge and belief.

Date Surveyed **August 31, 1977**

Registered Professional Engineer and/or Land Surveyor
Fred B. Kern, Jr.

Certificate No. **3950**

DEVELOPMENT PLAN

R & G Drilling Company

Schlosser No. 66

560'FNL, 330'FWL, Section 27-T28N-R11W

San Juan County, New Mexico

1. Existing roads shown on attached plat.
2. Planned access from existing road is approximately to new location.
3. Location -
See Above
4. No additional well is planned on this lease at this time.
5. Production equipment or storage facilities proposed for the well will be installed on location.
6. Water will be obtained from the San Juan river in the NW/4 Section 27-T29N-R11W
7. Waste materials will be buried on location or in reserve pit.
8. No permanent camp is planned. A trailer house will be used on location during drilling process.
9. No airstrip proposed.
10. See attached plat for layout.
11. Pits will be filled, location cleaned up, and area not in use for producing well will be reseeded.

DEVELOPMENT PLAN

Page 2 of 2

12. Lessee's or operator's representative.


Ewell N. Walsh: 325-8203; Radio Dispatch 325-1873, Car 620.
Address: P. O. Box 254, Farmington, New Mexico 87401

13. CERTIFICATION:

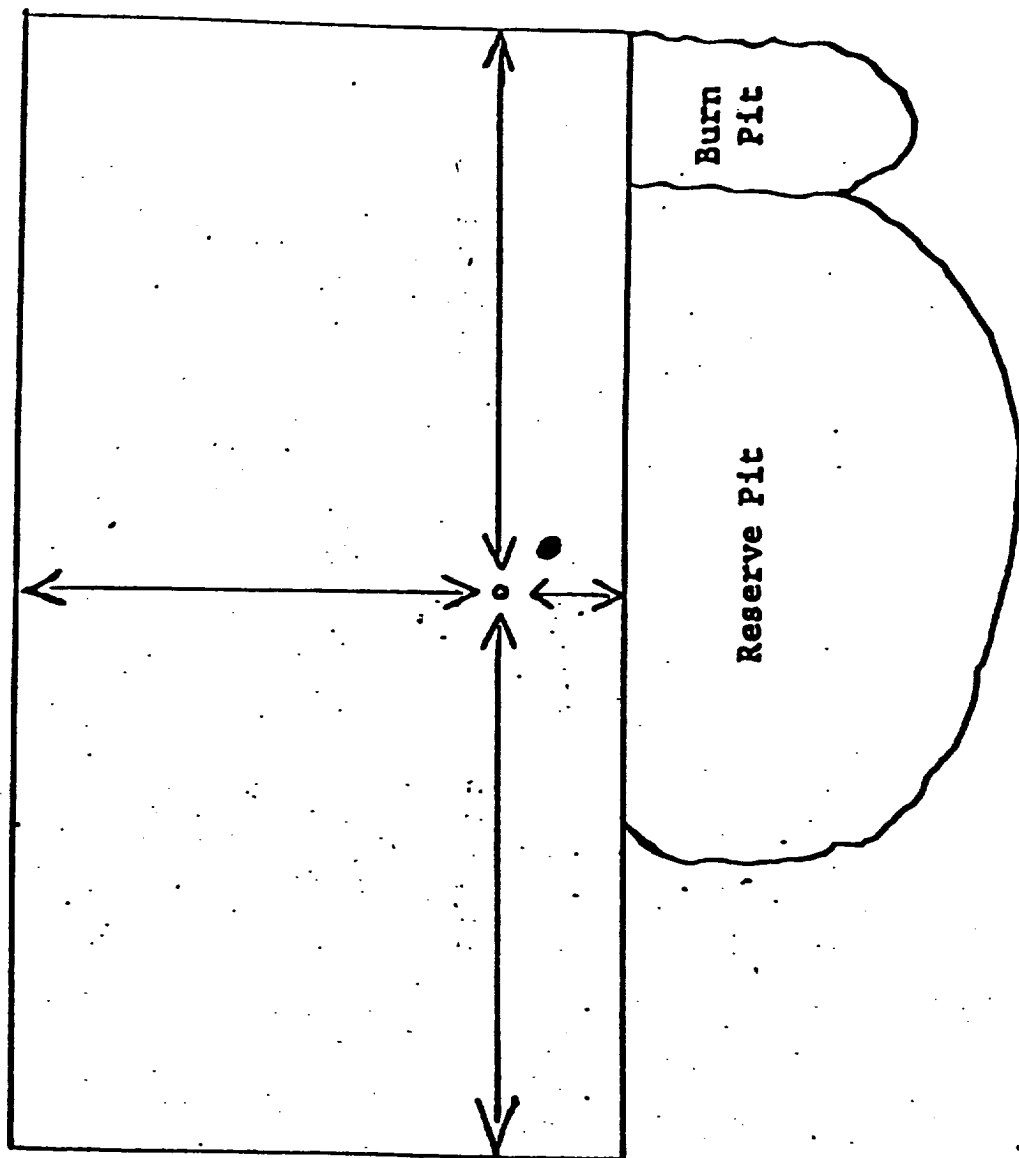
I hereby certify that I, or persons under my direct supervision, have inspected the proposed drillsite and access route; that I am familiar with the conditions which presently exist; that the statements made in this plan are, to the best of my knowledge, true and correct; and, that the work associated with the operations proposed herein will be performed by: _____

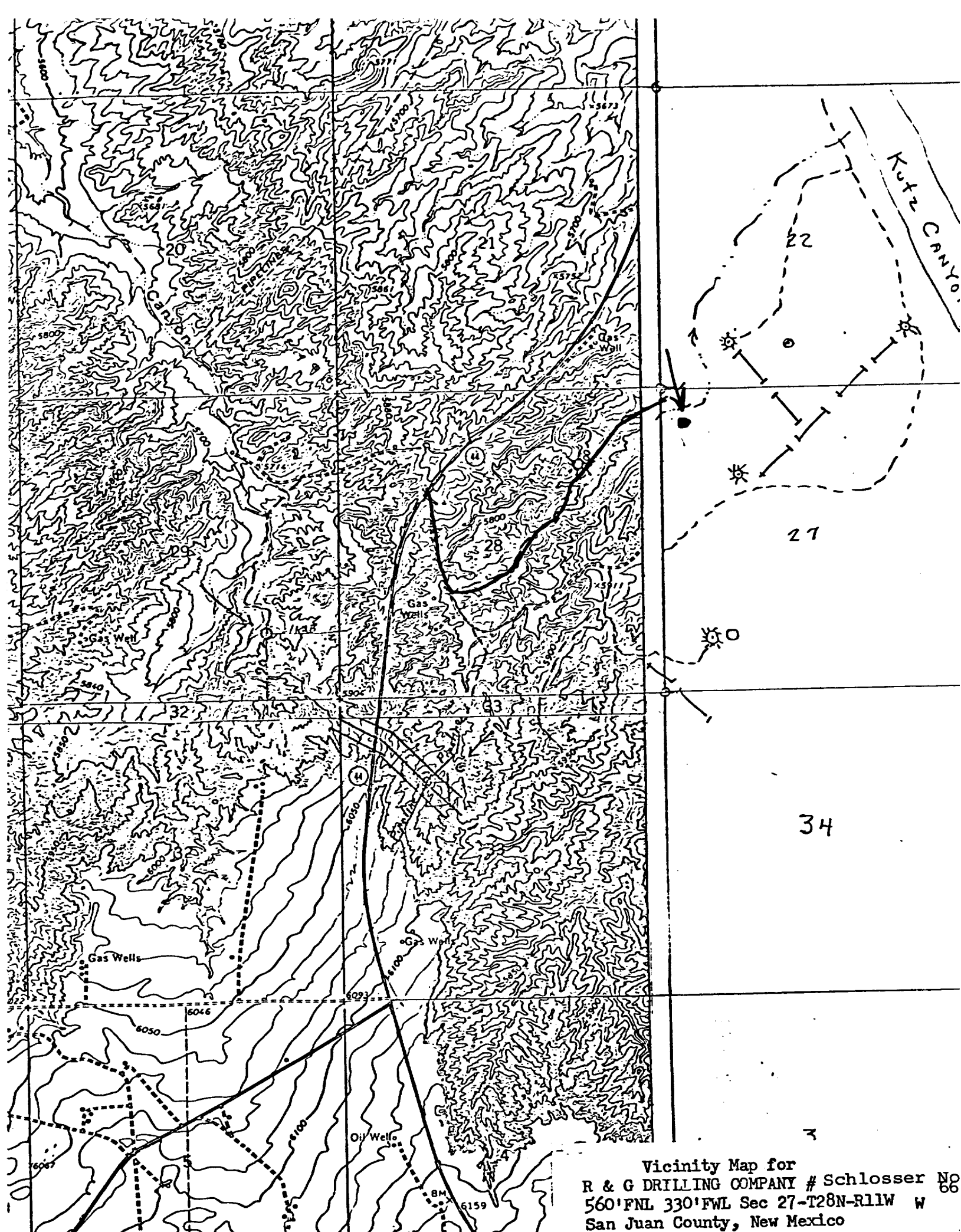
R & G Drilling Company

and its contractors and subcontractors in conformity with this plan and the terms and conditions under which it is approved.


Ewell N. Walsh, P.E., President,
Walsh Engineering & Production
Corporation

LOCATION LAYOUT
R & G DRILLING COMPANY
SCHLOSSER NO. 66
560'FNL, 330'FWL, Section 27-T28N-R11W
San Juan County New Mexico





Vicinity Map for
R & G DRILLING COMPANY # Schlosser No 66
560' FNL 330' FWL Sec 27-T28N-R11W W
San Juan County, New Mexico

R & G Drilling Company
Schlosser No. 66
560'FNL, 330'FWL, Section 27-T28N-R11W
San Juan County, New Mexico

Seven Point Well Control Program

1. Surface Casing.
See Application for Permit to Drill.
2. Spools and Flanges
 - A. Surface Casing - Scwd Series 600, 2000 psi W.P.
 - B. Production, Scwd Series 600, 2000 psi W.P.
 - C. Tubing Head - Series 600, 2000 psi W.P.
3. Intermediate Casing.
None
4. Blowout Preventers
Production Hole - 8" 2000 psi
Fill, kill and choke manifold - 5000 psi W.P.
5. Addition Equipment (If necessary)
 - A. Kelly Cock
 - B. Bit Float
 - C. Degasser
 - D. Pit Level Indicator
 - E. Sub with Valve for Drill Pipe.
6. Anticipated Bottom Hole Pressure.
700 psi. Current mud program is for 9.2 lb./gal mud with hydrostatic head of psi at feet. Mud weight will be increased if necessary for higher pressures.
7. Drilling Fluid.
Native mud with gel-chemical for logging