

UNITED STATES  
DEPARTMENT OF THE INTERIOR  
GEOLOGICAL SURVEY

30-078-23359

5. LEASE DESIGNATION AND SERIAL NO.

SF-078863

6. IF INDIAN, ALLOTTEE OR TRIBE NAME

7. UNIT AGREEMENT NAME

8. FARM OR LEASE NAME

Krause

9. WELL NO.

71

10. FIELD AND POOL, OR WILDCAT

Kutz Fruitland *ext*11. SEC., T., R., M., OR BLK.  
AND SURVEY OR AREA

Sec. 32-T28N-R11W

N.M.P.M.

12. COUNTY OR PARISH 13. STATE

San Juan

N.M.

## APPLICATION FOR PERMIT TO DRILL, DEEPEN, OR PLUG BACK

1a. TYPE OF WORK

DRILL ☒DEEPEN ☐PLUG BACK ☐

b. TYPE OF WELL

OIL  
WELL ☐GAS  
WELL ☒

OTHER

SINGLE  
ZONE ☒MULTIPLE  
ZONE ☐

2. NAME OF OPERATOR

R &amp; G Drilling Company

3. ADDRESS OF OPERATOR c/o Walsh Engineering &amp; Production Corp.

P.O. Box 254, Farmington, New Mexico 87401

4. LOCATION OF WELL (Report location clearly and in accordance with any State requirements.\*)

At surface

1450' FNL, 1090' FEL

At proposed prod. zone

Same

14. DISTANCE IN MILES AND DIRECTION FROM NEAREST TOWN OR POST OFFICE\*

15. DISTANCE FROM PROPOSED\*

LOCATION TO NEAREST  
PROPERTY OR LEASE LINE, FT.  
(Also to nearest drlg. unit line, if any)

1090'

16. NO. OF ACRES IN LEASE

--

17. NO. OF ACRES ASSIGNED  
TO THIS WELL

160

18. DISTANCE FROM PROPOSED LOCATION\*  
TO NEAREST WELL, DRILLING, COMPLETED,  
OR APPLIED FOR, ON THIS LEASE, FT.

--

19. PROPOSED DEPTH

1892'

20. ROTARY OR CABLE TOOLS

Rotary

21. ELEVATIONS (Show whether DF, RT, GR, etc.)

6005' GR

22. APPROX. DATE WORK WILL START\*

1/15/79

23.

## PROPOSED CASING AND CEMENTING PROGRAM

SIZE OF HOLE	SIZE OF CASING	WEIGHT PER FOOT	SETTING DEPTH	QUANTITY OF CEMENT
12-1/4"	8-5/8"	24.0	100'	125 Sacks
7-7/8 or 6-3/4"	4-1/2"	10.50	1892'	To be determined.

It is proposed to drill this well with rotary tools, and using drilling mud as a circulating medium, through the Fruitland Formation. Possible productive intervals in the Fruitland Formations will be completed. Productive casing will be cemented in such a manner to protect all possible productive intervals and water sand.

## Estimated Formation Tops

Ojo Alamo - 700'

Kirtland - 792'

Fruitland - 1540'

The NW/4 of Section 32 will be dedicated to this well.  
The natural gas from this well is committed.

IN ABOVE SPACE DESCRIBE PROPOSED PROGRAM: If proposal is to deepen or plug back, give data on present productive zone and proposed new productive zone. If proposal is to drill or deepen directionally, give pertinent data on subsurface locations and measured and true vertical depths. Give blowout preventer program, if any.

24. FOR: R &amp; G Drilling Company

President, Walsh Engineer.

SIGNED

Ewell N. Walsh, P.E.

TITLE

&amp; Prod. Corp.

DATE

1/5/79

(This space for Federal or State office use)

PERMIT NO.

APPROVAL DATE

APPROVED BY

TITLE

DATE

CONDITIONS OF APPROVAL, IF ANY:

ok Frank

\*See Instructions On Reverse Side

**NEW MEXICO OIL CONSERVATION COMMISSION  
WELL LOCATION AND ACREAGE DEDICATION PLAT**

Form O-11  
Supersedes O-12  
Effective 1-1-77

All distances must be from the outer boundaries of the section

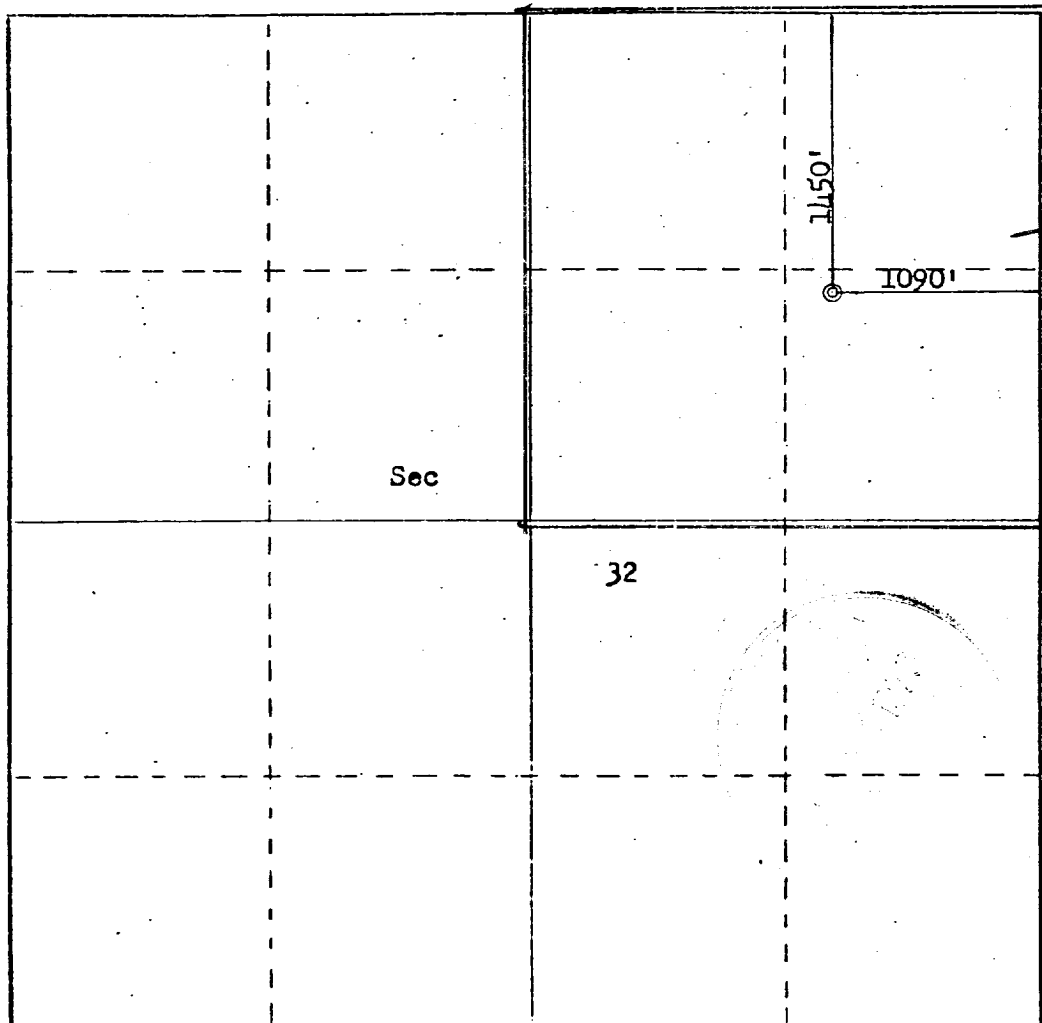
Operator <b>R &amp; G DRILLING COMPANY</b>			Lessee <b>KRAUSE</b>		Well No. <b>71</b>
Map Letter <b>H</b>	Section <b>32</b>	Township <b>28N</b>	Range <b>11W</b>	County <b>San Juan</b>	
Actual Footage Location of Well:					
<b>1450</b>	feet from the	<b>North</b>	line and	<b>1090</b>	feet from the <b>East</b> line
Ground Level Elev. <b>6005</b>	Producing Formation <b>Fruitland</b>		Pool <b>Kutz Fruitland</b>		Dedicated Acreage: <b>160</b> Acres

1. Outline the acreage dedicated to the subject well by colored pencil or hatchure marks on the plat below.
2. If more than one lease is dedicated to the well, outline each and identify the ownership thereof (both as to working interest and royalty).
3. If more than one lease of different ownership is dedicated to the well, have the interests of all owners been consolidated by communitization, unitization, force-pooling, etc?

☐ Yes    ☐ No    If answer is "yes," type of consolidation \_\_\_\_\_

If answer is "no," list the owners and tract descriptions which have actually been consolidated. (Use reverse side of this form if necessary.) \_\_\_\_\_

No allowable will be assigned to the well until all interests have been consolidated (by communitization, unitization, forced-pooling, or otherwise) or until a non-standard unit, eliminating such interests, has been approved by the Commission.



**CERTIFICATION**

I hereby certify that the information contained herein is true and complete to the best of my knowledge and belief.

FOR: **R & G Drilling Co.**

Name: *Ewell N. Walsh*  
**Ewell N. Walsh, P.E.**

Position  
**President**

Company  
**Walsh Engin, & Prod. Corp**

Date  
**1/5/79**

I hereby certify that the well location shown on this plat was plotted from field notes of actual surveys made by me or under my supervision, and that the same is true and correct to the best of my knowledge and belief.

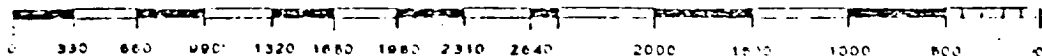
Date Surveyed  
**December 3, 1978**

Registered Professional Engineer and/or Land Surveyor

*Fred B. Kerr Jr.*  
**Fred B. Kerr Jr.**

Certificate No.

**3950**



## DEVELOPMENT PLAN

R & G DRILLING COMPANY

KRAUSE NO. 71

1450'FNL, 1090'FEL, Sec. 32-T28N-R11W

San Juan County, New Mexico

1. Existing roads shown on attached plat.
2. Planned access from existing road is approximately 300'.  
to new location.
3. Location - See Above
4. No additional well is planned on this lease at this time.
5. Production equipment or storage facilities proposed for  
the well will be installed on location.
6. Water to be obtained from the San Juan River in the  
NW/4 Section 27-T29N-R11W.
7. Waste materials will be buried on location or in reserve  
pit.
8. No permanent camp is planned. A trailer house will be  
used on location during drilling process.
9. No airstrip is proposed.
10. See attached plat for layout.
11. Pits will be filled, location cleaned up, and area not  
in use for producing well will be reseeded.

DEVELOPMENT PLAN

12. Lessee's or operator's representative.

Ewell N. Walsh: 327-4892 ; Radio Dispatch 325-1873, Car 620  
Address: P.O. Box 254, Farmington, New Mexico 87401

13; CERTIFICATION:

I hereby certify that I, or persons under my direct supervision, have inspected the proposed drillsite and access route; that I am familiar with the conditions which presently exist; that the statements made in this plan are, to the best of my knowledge, true and correct; and, that the work associated with the operations proposed herein will be performed by: \_\_\_\_\_

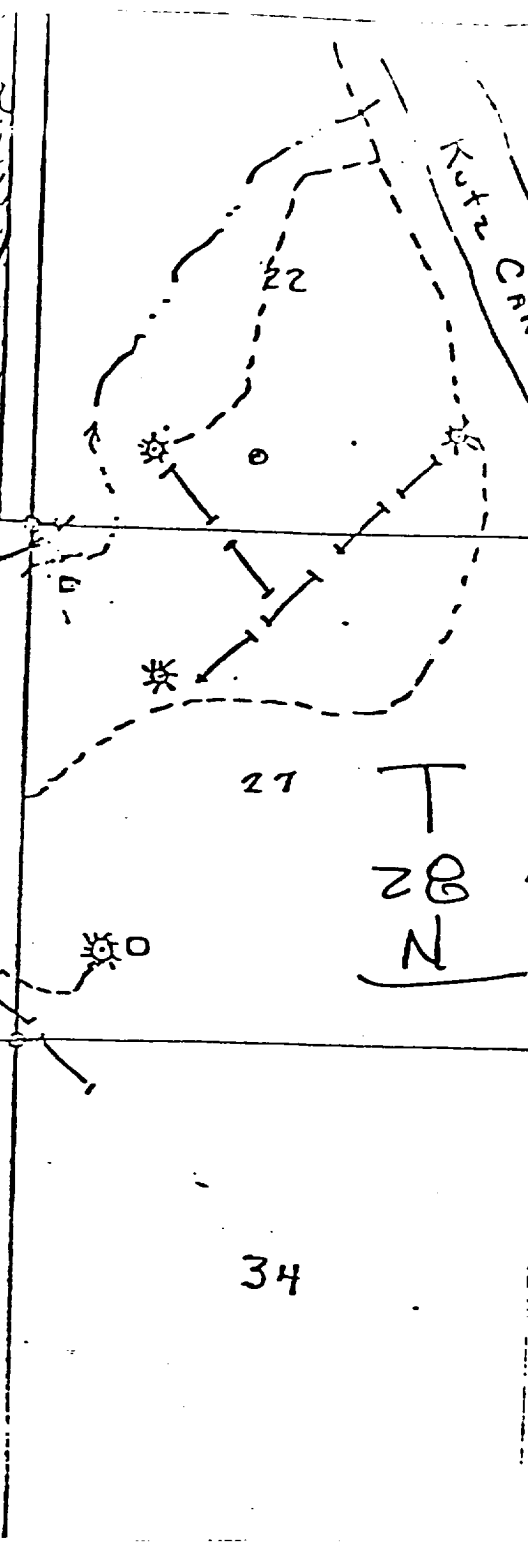
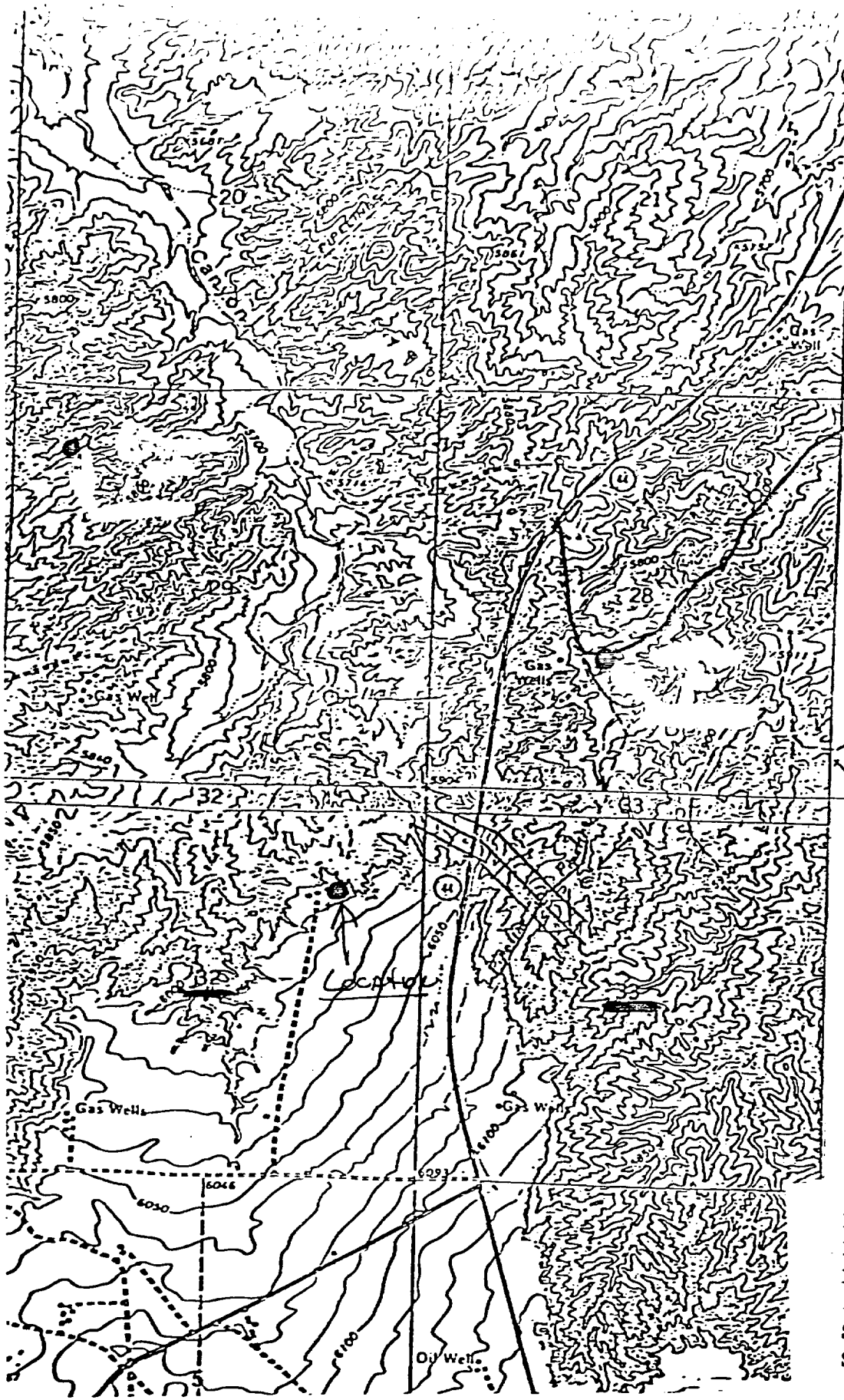
R & G Drilling Company

and its contractors and subcontractors in conformity with this plan and the terms and conditions under which it is approved.



Ewell N. Walsh, P.E., President,  
Walsh Engineering & Production  
Corporation

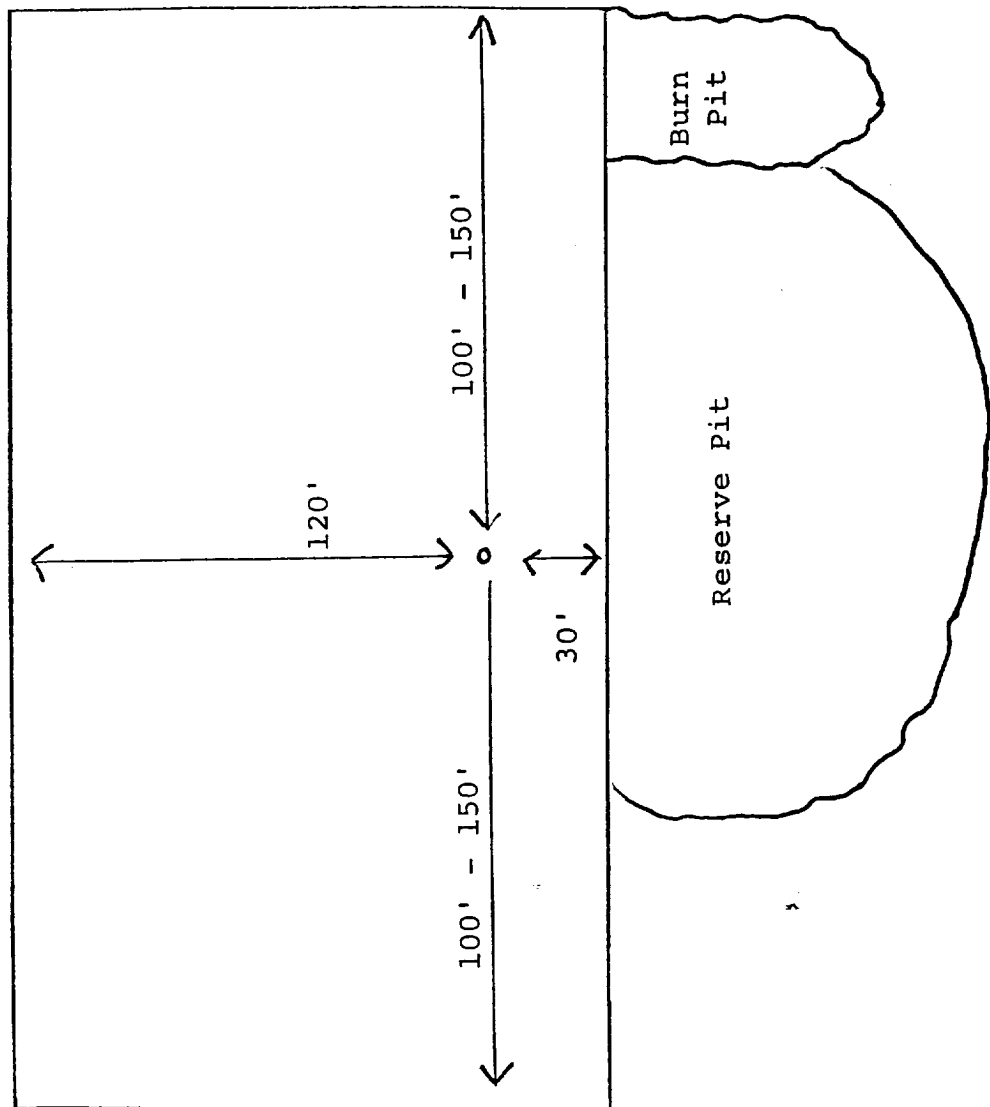
R-11-W



R & G DRILLING CO.  
Fruitland Location  
KRAUSE NO. 71  
1450'FNL, 1190'FEL  
Sec. 32-T28N-R11W  
San Juan County, New Mexico

LOCATION LAYOUT

R & G DRILLING COMPANY  
KRAUSE NO. 71  
1450'FNL, 1090'FEL, Sec. 32-T28N-R11W  
San Juan County, New Mexico



R & G DRILLING COMPANY  
KRAUSE NO. 71  
1450'FNL, 1090'FEL, Sec. 32-T28N-R11W  
San Juan County, New Mexico

Seven Point Well Control Program

1. Surface Casing.  
See Application for Permit to Drill.
2. Spools and Flanges
  - A. Surface Casing - Scwd Series 600, 2000 psi W.P.
  - B. Production - Scwd Series 600, 2000 psi W.P.
  - C. Tubing Head - Series 600, 2000 psi W.P.
3. Intermediate Casing.  
None
4. Blowout Preventers  
Production Hole - 8", 2000 psi  
Fill, kill and choke manifold - 5000 psi W.P.
5. Addition Equipment (If necessary)
  - A. Kelly Cock
  - B. Bit Float
  - C. Degasser
  - D. Pit Level Indicator
  - E. Sub with Valve for Drill Pipe.
6. Anticipated Bottom Hole Pressure.  
700 psi. Current mud program is for 9.2 lb/gal mud with hydrostatic head of 904 psi at 1892 feet. Mud weight will be increased if necessary for higher pressures.
7. Drilling Fluid.  
Native mud with gel-chemical for logging.