

UNITED STATES
DEPARTMENT OF THE INTERIOR
GEOLOGICAL SURVEY

APPLICATION FOR PERMIT TO DRILL, DEEPEN, OR PLUG BACK

1A. TYPE OF WORK

DRILL ☒DEEPEN ☐PLUG BACK ☐

B. TYPE OF WELL

OIL
WELL ☐GAS
WELL ☒OTHER ☐SINGLE
ZONE ☐MULTIPLE
ZONE ☒

2. NAME OF OPERATOR

Supron Energy Corporation

3. ADDRESS OF OPERATOR

P. O. Box 808, Farmington, New Mexico 87401

4. LOCATION OF WELL (Report location clearly and in accordance with any State requirements.)*

At surface

1710 feet from the South line & 1675 feet from the West line.

At proposed prod. zone Same as above.

14. DISTANCE IN MILES AND DIRECTION FROM NEAREST TOWN OR POST OFFICE*

3 Miles South of Bloomfield, New Mexico

16. DISTANCE FROM PROPOSED*

1675 feet

LOCATION TO NEAREST

PROPERTY OR LEASE LINE, FT.

(Also to nearest drlg. unit line, if any) 1675 feet

18. DISTANCE FROM PROPOSED LOCATION*

TO NEAREST WELL, DRILLING, COMPLETED,
OR APPLIED FOR, ON THIS LEASE, FT.

414

16. NO. OF ACRES IN LEASE

1894.08

19. PROPOSED DEPTH

1700

17. NO. OF ACRES ASSIGNED
TO THIS WELL

160

20. ROTARY OR CABLE TOOLS

Rotary

21. ELEVATIONS (Show whether DF, RT, GR, etc.)

5631 Gr.

22. APPROX. DATE WORK WILL START*

November 1, 1979

23.

PROPOSED CASING AND CEMENTING PROGRAM

SIZE OF HOLE	SIZE OF CASING	WEIGHT PER FOOT	SETTING DEPTH	QUANTITY OF CEMENT
9-7/8"	7-5/8" (New)	20.00	200 *	125 sx. class "B" w/2% CaCl.
6-3/4"	4-1/2" (New)	9.50	1700	200 sx. class "B" w/1/4# Flakes

* Or set 90' of surface casing & cement up through Ojo Alamo when setting production casing & verify cement top by log or if plugging well, spot plug across Ojo Alamo.

We propose to drill a 9-7/8" hole to about 200 ft. and run New 7-5/8", 20.00# H-40 casing to T.D. of 200 ft. It will be cemented from T.D. to surface with about 125 sx of class "B" with 2% CaCl. We will then drill a 6-3/4" hole to a T.D. of about 1700 ft. and run 4-1/2", 9.50#, K-55 casing to T.D. and cement with about 200 sx of class "B" with 1/4# of Gello-4 flake per sack. The well will be perforated and stimulated in the Pictured Cliffs and Fruitland zones and a packer set between the zones. Tubing will be run and stung into the packer to produce the Pictured Cliffs. The Fruitland will be produced through the 4-1/2" casing string.

The well is on acreage dedicated to a gas transporter.

IN ABOVE SPACE DESCRIBE PROPOSED PROGRAM: If proposal is to deepen or plug back, give data on present productive zone and proposed new productive zone. If proposal is to drill or deepen directionally, give pertinent data on subsurface locations and measured and true vertical depths. Give blowout preventer program, if any.

24.

SIGNED

Kenneth E. Roddy

TITLE

Production Superintendent

DATE

August 3, 1979

PERMIT NO.

APPROVAL DATE

APPROVED BY

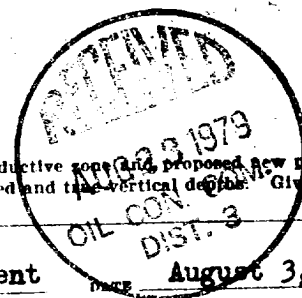
TITLE

DATE

CONDITIONS OF APPROVAL, IF ANY:

ok Frank

Hymoc



**NEW MEXICO OIL CONSERVATION COMMISSION
WELL LOCATION AND ACREAGE DEDICATION PLAT**

Form C-102
Supersedes C-128
Effective 1-1-65

All distances must be from the outer boundaries of the Section.

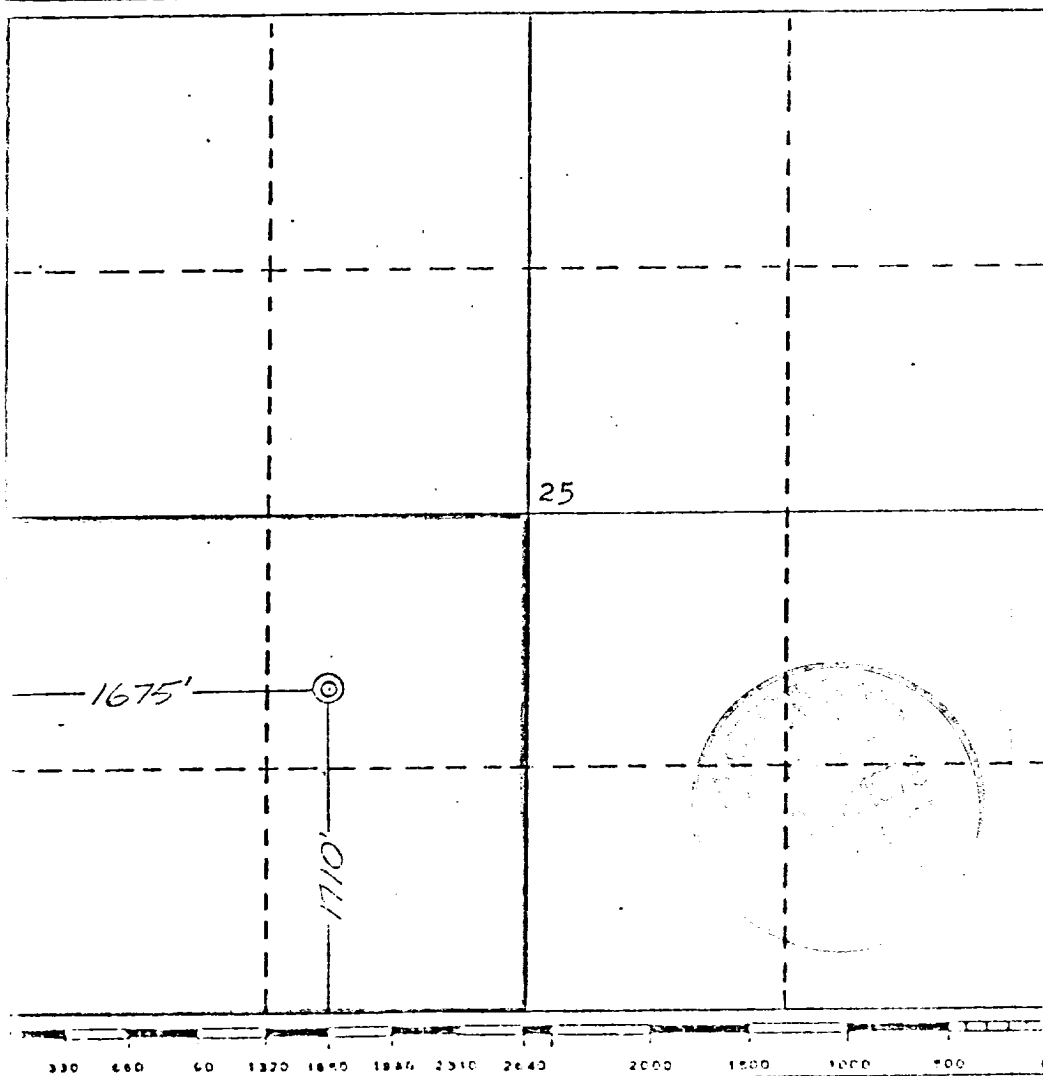
Operator SUPRON ENERGY CORPORATION			Lease ANGEL PEAK "B"		Well No. 29
Unit Letter K	Section 25	Township 28 NORTH	Range 11 WEST	County SAN JUAN	
Actual Footage Location of Well:					
1710 feet from the SOUTH line and		1675 feet from the WEST line			
Ground Level Elev. 5631	Producing Formation Pictured Cliffs Fruitland		Pool Fulcher Kutz Kutz	Dedicated Acreage: SW 1/4 160 Acres	

- Outline the acreage dedicated to the subject well by colored pencil or hatchure marks on the plat below.
- If more than one lease is dedicated to the well, outline each and identify the ownership thereof (both as to working interest and royalty).
- If more than one lease of different ownership is dedicated to the well, have the interests of all owners been consolidated by communitization, unitization, force-pooling, etc?

☐ Yes ☐ No If answer is "yes," type of consolidation _____

If answer is "no," list the owners and tract descriptions which have actually been consolidated. (Use reverse side of this form if necessary.) _____

No allowable will be assigned to the well until all interests have been consolidated (by communitization, unitization, forced-pooling, or otherwise) or until a non-standard unit, eliminating such interests, has been approved by the Commission.



CERTIFICATION

I hereby certify that the information contained herein is true and complete to the best of my knowledge and belief.

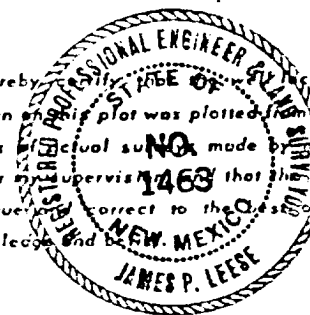
Rudy D. Motto

Name
Rudy D. Motto
Position
Area Superintendent

Company
SUPRON ENERGY CORPORATION

Date
July 16, 1979

I hereby certify that the location shown on this plat was plotted from field notes of actual survey made by me or under my supervision and that the same is true and correct to the best of my knowledge and belief.



Date Surveyed
11 July 1979

Registered Professional Engineer and Land Surveyor

James P. Leese
James P. Leese

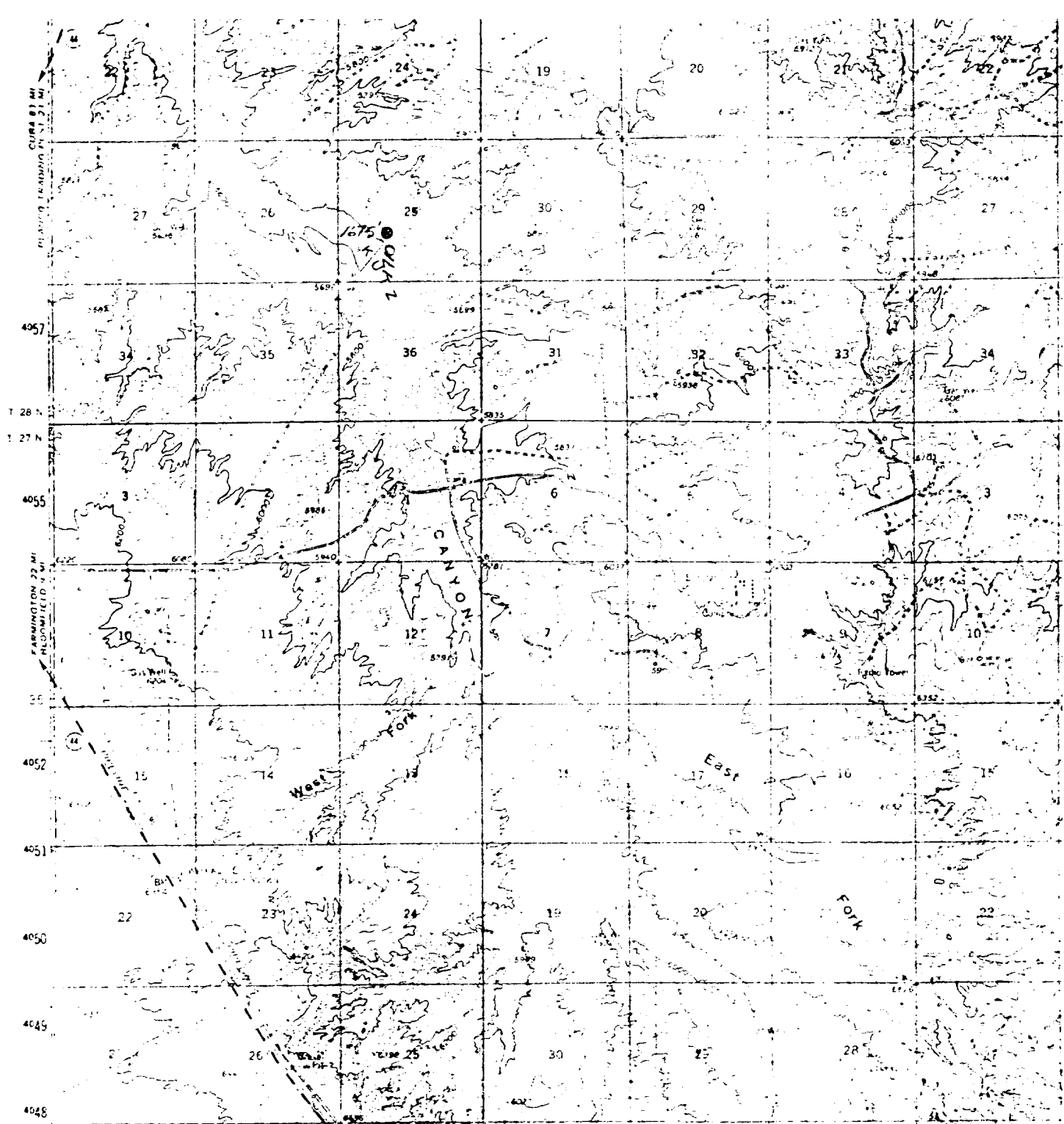
Certificate No.
1463

ANGEL PEAK "B" NO. 29

1710 ft./South line & 1675 ft./West line
Section 25, T-28N, R-11W
San Juan County, New Mexico

SUPPLEMENT TO FORM 9-331C

1. The Geologic name of the surface formation is "Wasatch".
2. The estimated tops of important Geologic markers are:
 - A. Base of Ojo Alamo 950
 - B. Top of Fruitland 1280
 - C. Top of Pictured Cliffs 1560
3. The estimated depth at which anticipated water, oil, or other mineral bearing formations are expected to be encountered are:
 - A. Base of Ojo Alamo 950 - Water
 - B. Top of Fruitland 1280 - Gas
 - C. Top of Pictured Cliffs 1560 - Gas
4. The casing program is shown on Form 9-331C and all casing is new.
5. The lessee's pressure - control equipment schematics are attached, along with minimum specifications, testing procedures, and frequencies.
6. The type, estimated volumes, and characteristics of the circulating media are as follows:
 - A. 0 - 200 ft. - Natural mud.
 - B. 200 - 1700 ft. - Permaloid, non-dispersed mud containing 167 sx of gel. 67 sx of permaloid and 10 sx of C.M.C.
7. The auxiliary equipment to be used will be floats at the bit and a sub on the floor with a full opening valve to be stabbed into the drill pipe when the kelly is not in the string.
8. This well is in an area which is partially developed; therefore we will not have a testing and coring program. The logging program will be as follows:
 - A. E.S. Induction.
 - B. Gamma Ray Density.
 - C. Gamma Ray Correlation.
 - D. Cement Bond log.
9. We do not expect to find any abnormal pressures, temperatures or hydrogen sulphide problems in this partially - developed area.
10. The anticipated starting date for this well is November 1, 1979.



Supron Energy Corporation
 ANGEL PEAK "B" #29
 NE $\frac{1}{4}$ SW $\frac{1}{4}$ Sec. 25, T28N, R11W,
 NMPM, San Juan County, N.M.
 1710 F/SL - 1675 F/WL
 Elevation - 5631

AZTEC 086
2D Hughes
TD 6400
KD

23

DELHI-TAYLOR
7 Florence
TU 5180
PC

OHIO OIL
2 Ohio Aztec
TD 6450
KD

OHIO OIL CO
TD 1670
FI

Morthern Oil
5-Ohio C Govt
FI-PC
TD 1757

2
TD 6249

3
KD
TD 6236

Ohio-Govt
PAN AM PET

35

7
KD
TD 6380

9
KD
TD 6475

EH Pipkin

98
KD
TD 6400

24

Angel's
13 B
25B Angel's
TD 6511
KD

W. GALLAWAY
1988
26 B
Angel's
12 B

25

SUPRON
27B Angel's
TD 6327
KD
29 B Angel's

36

POTASH CO
TD 1742
KD
5
PC
PAN AM PET
TD 6245

PAN AM PET
6
KD
TD 6275

8A
KD
TD 656C

19

68
KD
TD 6511

PC 5B
TD 1995
AZTEC 086
Newman
PC 3B
TD 2032
IC

TD 6570

STANOLIND
1 Hubbell
PC
TD 1985

PAN AM
1B Hubbell
TD 6393

30

AZTEC
2 Hubbell
TD 6225

Kingwood
1B Knuff
TD 6420
KD

ELP NG
1 Martin
TD 1885
PC
PAN AM
1B Martin
TD 4357

31

A.E. McLANE
4 Knuff
TD 1840
PC
T.M. WHITE
3 Knuff
TD 1759
PC

STANOLIND
1B Martin
TD 1858
PC

K CANYON
9 Knuff
TD 2135
PC

PET COPELTX
1V Day
PC
TD 2179

SUNSET INT
1V Knuff-Fed
KD
TD 6630

K CANYON
1V Day
TD 4801

20

STANOLIND
2 Hubbell
TD 2135
PC
AZTEC 086
1A Hubbell
TD 6570

29

GT LACEY
1 Hubbell
TD 2157

PAN AM
1C Hubbell
TD 6597

STANOLIND
1B Knuff
TD 6420
PC

TURNER
1 Fessell
TD 1910

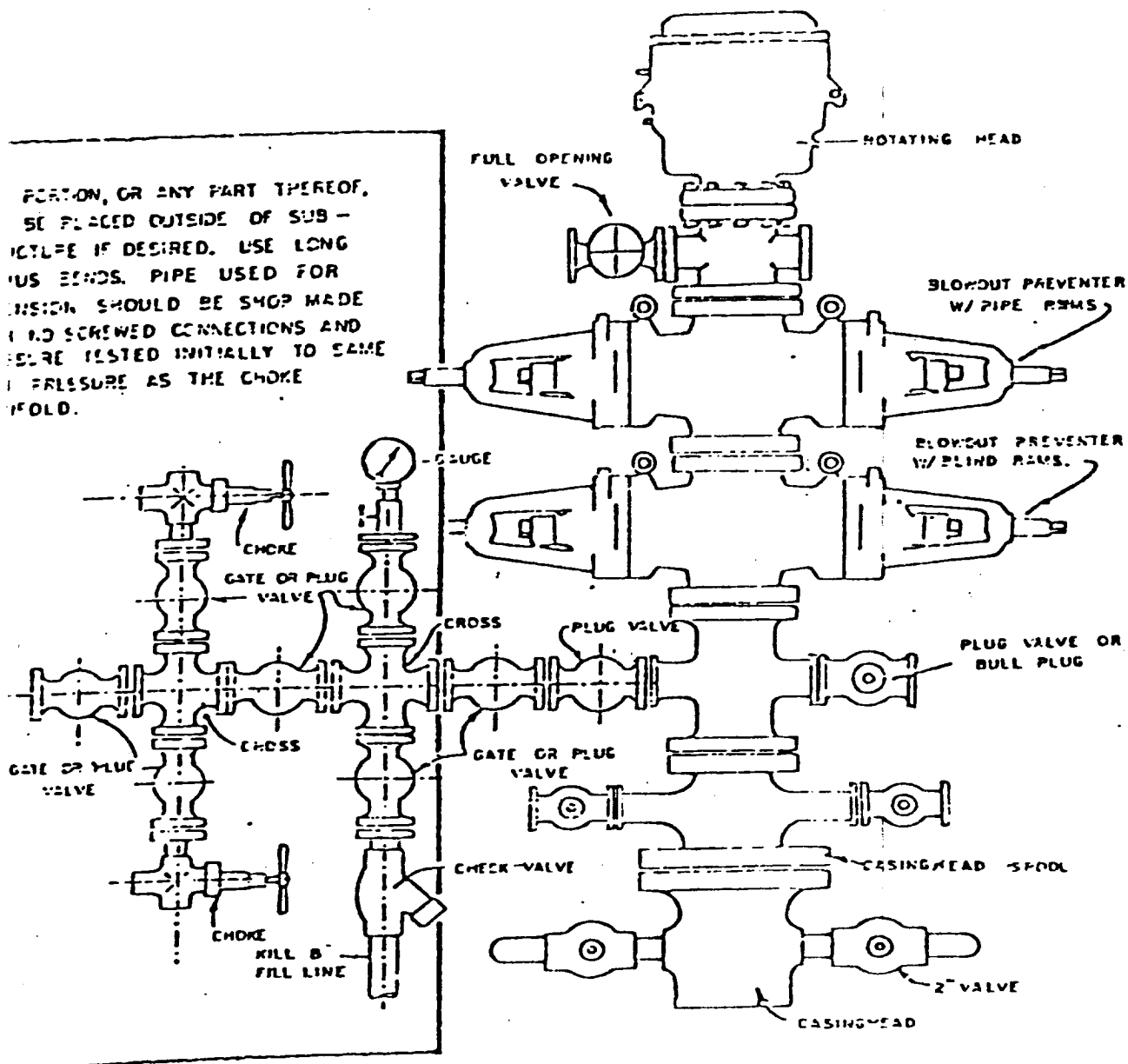
KUTZ CANYON
1E Fessell
PC
TD 1926

32

STANOLIND
1A Fessell
TD 2135
PC

Blowout Preventer will be tested daily and prior to drilling out with the results to be logged on the drillers report.

The B.O.P. and all valve and fittings are rated at 3000 psi working pressure, and hydraulically operated

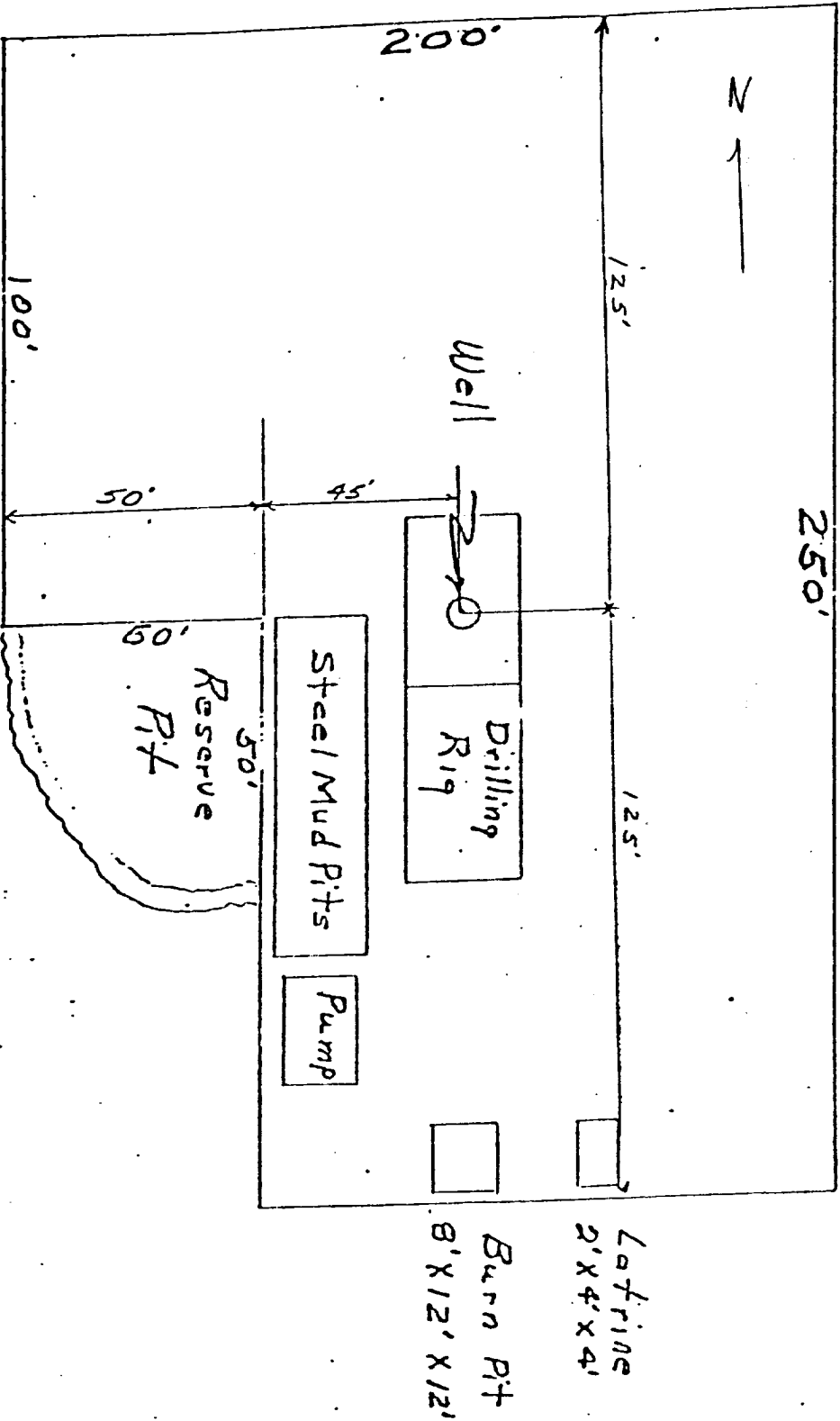


BLOWOUT PREVENTER HOOKUP

SUPRON ENERGY CORPORATION
LOCATION AND EQUIPMENT LAYOUT

ANGEL PEAK "B" NO. 29

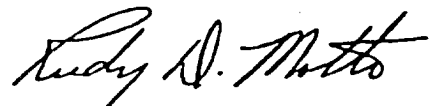
1710 Feet from the South line and 1675 feet from the West line of
Section 25, Township 28 North, Range 11 West, N.M.P.M., San Juan
County, New Mexico.



SUPRON ENERGY CORPORATION
Post Office Box 808
FARMINGTON, NEW MEXICO 87401

I hereby certify that I, or persons under my direct supervision, have inspected the proposed drillsite and access route; that I am familiar with the conditions which presently exist; that the statements made in this plan are, to the best of my knowledge, true and correct; and, that the work associated with the operations proposed herein will be performed by SUPRON ENERGY CORPORATION and its contractors subcontractors in conformity with this plan and the terms and conditions under which it is approved.

SUPRON ENERGY CORPORATION



Rudy D. Motto
Area Superintendent
Phone: 325-3587

United States Geological Survey
P. O. Box 959
Farmington, New Mexico 87401

Gentlemen:

Supron Energy Corporation proposes to drill the Angel Peak "B" No. 29 well to be located 1710 feet from the South line and 1675 feet from the West line of Section 25, Township 28 North, Range 11 West, San Juan County, New Mexico.

The following attachments are included with this application:

1. Topographical map showing proposed location and access road.
2. No access road will be needed.
3. Map showing existing producing facilities.
4. Location of surface equipment if required.
5. Drilling and completion water will be obtained from the San Juan River.
6. All pits will be fenced and constructed in such a way as to prevent litter on the location.
7. We will dispose of all waste by placing it in the reserve pit and burying it when the well is completed.
8. There will be no camp at or near the well site.
9. There will be no air strip.
10. A plat is attached showing the location of the rig, mud tanks, reserve pit, burn pit, etc.
11. A letter of certification is attached. The operator representative for compliance purposes is Rudy D. Motto, Area Superintendent, P. O. Box 808, Farmington, New Mexico 87401 Phone (505) 325-3587.
12. After the well is completed, the location will be cleaned up and bladed. The reserve pit will be allowed to dry and then filled and restored to its natural state.
13. The soil is sandy loam with principal vegetation being Sage brush, Pinon, and Juniper.