

All distances must be from the outer boundaries of the Section

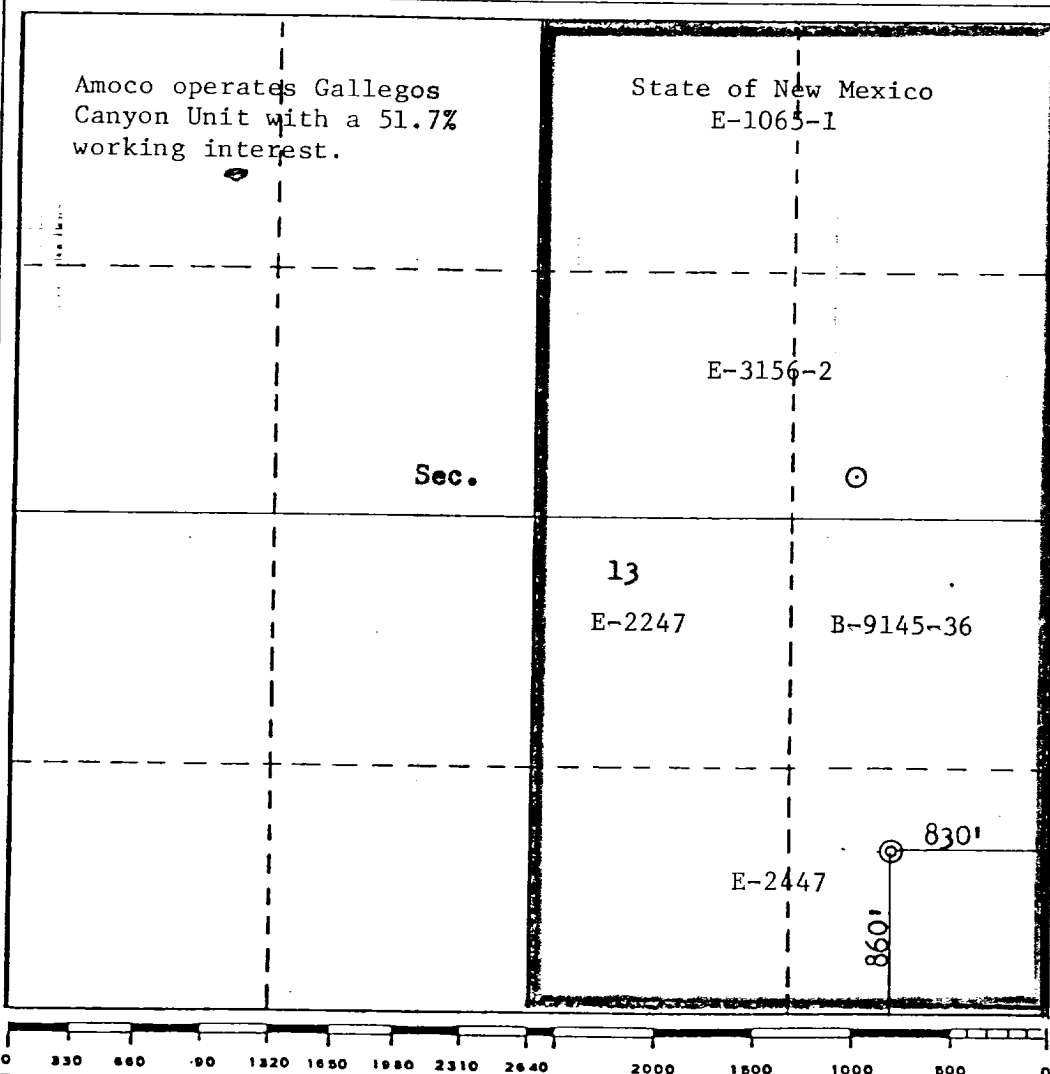
| | | | | | |
|--|--------------------------------------|------------------------|--------------------------------------|---------------------------|--|
| Operator AMOCO PRODUCTION COMPANY | | | Lease GALLEGOS CANYON UNIT | | Well No. 203-E |
| Unit Letter P | Section 13 | Township 28N | Range 12W | County San Juan | |
| Actual Footage Location of Well: 860 feet from the South line and 830 feet from the East line | | | | | |
| Ground Level Elev. 5577 | Producing Formation Dakota | | Pool Basin Dakota | | Dedicated Acreage: 320 Acres |

1. Outline the acreage dedicated to the subject well by colored pencil or hatchure marks on the plat below.
2. If more than one lease is dedicated to the well, outline each and identify the ownership thereof (both as to working interest and royalty).
3. If more than one lease of different ownership is dedicated to the well, have the interests of all owners been consolidated by communitization, unitization, force-pooling, etc?

☒ Yes ☐ No If answer is "yes," type of consolidation Unitization (Gallegos Canyon Unit)

If answer is "no," list the owners and tract descriptions which have actually been consolidated. (Use reverse side of this form if necessary.)

No allowable will be assigned to the well until all interests have been consolidated (by communitization, unitization, forced-pooling, or otherwise) or until a non-standard unit, eliminating such interests, has been approved by the Commission.



CERTIFICATION

I hereby certify that the information contained herein is true and complete to the best of my knowledge and belief.

B. E. Fackrell

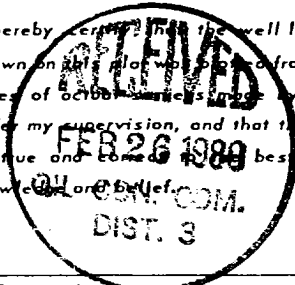
Name
B. E. FACKRELL

Position
DISTRICT ENGINEER

Company
AMOCO PRODUCTION COMPANY

Date
JANUARY 16, 1980

I hereby certify that the well location shown on this plat was taken from field notes of actual surveys made by me or under my supervision, and that the same is true and correct to the best of my knowledge and belief.



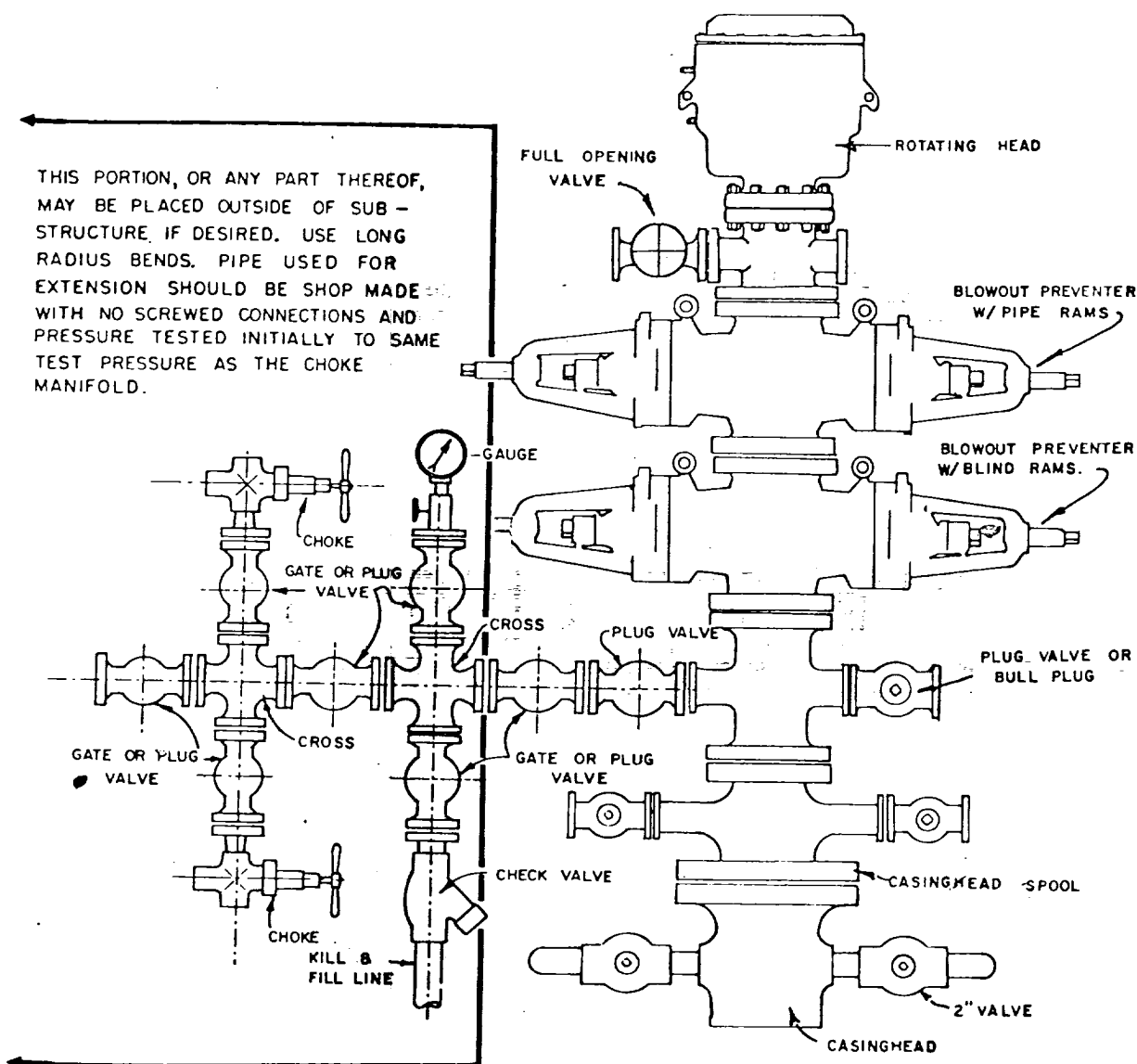
Date Surveyed
January 14, 1980

Registered Professional Engineer
and/or Land Surveyor

Fred B. Kerr Jr.
Fred B. Kerr Jr.

Certification No. MEXICO
3950 B. KERR, JR.

1. Blowout Preventers and master valve to be fluid operated, and all fittings must be in good condition.
2. Equipment through which bit must pass shall be as large as the inside diameter of the casing that is being drilled through.
3. Nipple above Blowout Preventer shall be same size or larger than BOP being drilled through.
4. All fittings to be flanged.
5. Omsco or comparable safety valve must be available on rig floor at all times with proper connection or sub. The I.D. of safety valve should be as great as I.D. of tool joints of drill pipe, or at least as great as I.D. of drill collars.



BLOWOUT PREVENTER HOOKUP

API Series # 900

EXHIBIT D-4

OCTOBER 16, 1969

Operation of BOP by closing both pipe and blind rams will be tested each trip or, on long bit runs, pipe rams will be closed once each 24 hours.