

APPLICATION FOR PERMIT TO DRILL, DEEPEN, OR PLUG BACK

1. TYPE OF WELL  
DRILL ☒ DEEPEN ☐ PLUG BACK ☐  
2. NAME OF OPERATOR  
SUPRON ENERGY CORPORATION  
3. ADDRESS OF OPERATOR  
P.O. Box 808, Farmington, New Mexico 87401  
4. LOCATION OF WELL (Report location clearly and in accordance with any State requirements.)  
At surface 790 Ft./South; 1800 Ft./West line  
At proposed prod. zone Same as above  
14. DISTANCE IN MILES AND DIRECTION FROM NEAREST TOWN OR POST OFFICE\*  
4 Miles South of Farmington, New Mexico  
15. DISTANCE FROM PROPOSED\*  
LOCATION TO NEAREST PROPERTY OR LEASE LINE, FT. 790 Ft.  
(Also to nearest drlg. unit line, if any) 790 Ft.  
18. DISTANCE FROM PROPOSED LOCATION\* TO NEAREST WELL, DRILLING, COMPLETED, OR APPLIED FOR, ON THIS LEASE, FT. 175 Ft.  
21. ELEVATIONS (Show whether DF, RT, GR, etc.)  
601C GR

5. LEASE DESIGNATION AND SERIAL NO.  
SR 077968  
6. IF INDIAN ALLOTTEE OR TRIBE NAME  
7. UNIT AGREEMENT NAME  
8. FARM OR LEASE NAME  
C.J. Holder  
9. WELL NO.  
16  
10. FIELD AND POOL, OR WILDCAT  
Basin Dakota  
11. SEC., T., R., M., OR BLK. AND SURVEY OR AREA  
Sec. 9, T-28N, R-13W  
N.M.P.M.  
12. COUNTY OR PARISH  
San Juan  
13. STATE  
New Mexico  
16. NO. OF ACRES IN LEASE  
1557.20  
17. NO. OF ACRES ASSIGNED TO THIS WELL  
348.41 378.28  
20. ROTARY OR CABLE TOOLS  
Rotary  
22. APPROX. DATE WORK WILL START\*  
April 25, 1981

23. PROPOSED CASING AND CEMENTING PROGRAM

SIZE OF HOLE	SIZE OF CASING	WEIGHT PER FOOT	SETTING DEPTH	QUANTITY OF CEMENT
12-1/4"	8-5/8"	24.00	400 Ft.	250 Sx. Circulated
7-7/8"	4-1/2"	10.50	6480 Ft.	825 Sx.

We desire to drill 12-1/4" surface hole to approximately 400 ft. Run new 8-5/8", 24.00 csg. Cement csg. in place w/the cement being circulated to surface. Pressure test the csg. Drill out w/7-7/8" bit using mud as the circulating medium. Drill to T.D. of approximately 6480 ft. Log well. Cement as follows: 1st stage approx. 350 sx. of 50-50 poz. 2nd stage w/D.V. tool at approx. 4425 ft. Cement w/approx. 250 sx. 50-50 poz followed by 50 sx of class "B". 3rd stage w/D.V. tool at approx. 1850 ft. Cement w/approx. 125 sx. of 65-35 poz followed by 50 sx of class "B". Pressure test casing. Perforate and fracture the Dakota formation. Clean the well up. Run tubing and set in the Dakota formation. Nipple down the wellhead. Connect to a gathering system.

The production from this well has previously been dedicated to a transporter.

IN ABOVE SPACE DESCRIBE PROPOSED PROGRAM. If proposal is to deepen or plug back, give data on present productive zone and proposed new productive zone. If proposal is to drill or deepen directionally, give pertinent data on subsurface locations and measured and true vertical depths. Give blowout preventer program, if any.

SIGNED Rudy D. Motto TITLE Area Superintendent DATE March 18, 1981  
(This space for Federal or State office use)

PERMIT NO. \_\_\_\_\_ APPROVAL DATE \_\_\_\_\_  
APPROVED BY \_\_\_\_\_ TITLE \_\_\_\_\_  
CONDITIONS OF APPROVAL, IF ANY:

APPROVED  
AS AMENDED  
APR 21 1981  
James F. Sims  
JAMES F. SIMS  
DISTRICT ENGINEER

All distances must be from the outer boundaries of the Section.

Lessee <b>SUPRON ENERGY CORPORATION</b>			Lease <b>C. J. HOLDER</b>		Well No. <b>16</b>
Section <b>9</b>	Township <b>28 NORTH</b>	Range <b>13 WEST</b>	County <b>SAN JUAN</b>		
Actual Section Location of Well: 790 feet from the <b>SOUTH</b> line and 1800 feet from the <b>WEST</b> line					
Ground Level Elev. <b>6010</b>	Producing Formation <b>DAKOTA</b>	Pool <b>BASIN</b>	Dedicated Acres: <b>278.28</b> See Below <b>348.41</b> Acres		

1. Outline the acreage dedicated to the subject well by colored pencil or hatchure marks on the plat below.
2. If more than one lease is dedicated to the well, outline each and identify the ownership thereof (both as to working interest and royalty).
3. If more than one lease of different ownership is dedicated to the well, have the interests of all owners been consolidated by communitization, unitization, force-pooling, etc?

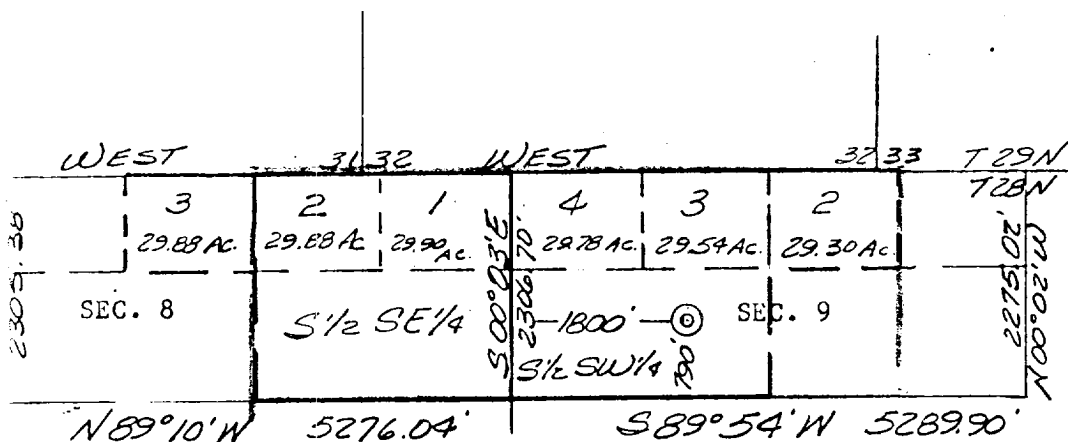
☐ Yes ☐ No If answer is "yes," type of consolidation \_\_\_\_\_

If answer is "no," list the owners and tract descriptions which have actually been consolidated. (Use reverse side of this form if necessary.) \_\_\_\_\_

No allowable will be assigned to the well until all interests have been consolidated (by communitization, unitization, forced-pooling, or otherwise) or until a non-standard unit, eliminating such interests, has been approved by the Division.

DEDICATION

Sec. 9, T-28N, R-13W - Lot 2,3,4, and S/2 of SW/4 and SW/4 of SE/4  
Sec. 8, T-28N, R-13W - Lot 1,2, and S/2 of SE/4



CERTIFICATION

I hereby certify that the information contained herein is true and complete to the best of my knowledge and belief.

Name  
**Rudy D. Motto**  
Position  
**Area Superintendent**  
Company  
**Supron Energy Corporation**  
Date  
**March 2, 1981**

I hereby certify the well location shown on the plat was plotted from field notes of October 1980 by me or under my supervision. The same is true to the best of my knowledge and belief.

Date Surveyed  
**February 26, 1981**  
Registered Professional Engineer  
and/or Land Surveyor

**Michael Daly**

Certificate No.  
**5992**

