

UNITED STATES
DEPARTMENT OF THE INTERIOR
GEOLOGICAL SURVEY

APPLICATION FOR PERMIT TO DRILL, DEEPEN, OR PLUG BACK

1a. TYPE OF WORK

DRILL ☒DEEPEN ☐PLUG BACK ☐

b. TYPE OF WELL

OIL
WELL ☐GAS
WELL ☒

OTHER

SINGLE
ZONE ☒MULTIPLE
ZONE ☐

2. NAME OF OPERATOR

Energy Reserves Group, Inc.

3. ADDRESS OF OPERATOR

P. O. Box 3280; Casper, WY 82602

4. LOCATION OF WELL (Report location clearly and in accordance with any State requirements.)

At surface

810' FSL 1790' FWL

At proposed prod. zone

14. DISTANCE IN MILES AND DIRECTION FROM NEAREST TOWN OR POST

Approx. 3 miles east & 2 miles south of Farmington, New Mexico

15. DISTANCE FROM PROPOSED*

LOCATION TO NEAREST

PROPERTY OR LEASE LINE, FT.

(Also to nearest drlg. unit line, if any)

810'

18. DISTANCE FROM PROPOSED LOCATION*

TO NEAREST WELL, DRILLING, COMPLETED,

OR APPLIED FOR, ON THIS LEASE, FT.

1200'

16. NO. OF ACRES IN LEASE

27,794.68

19. PROPOSED DEPTH

1,540'

17. NO. OF ACRES ASSIGNED

TO THIS WELL

20. ROTARY OR CABLE TOOLS

Rotary

21. ELEVATIONS (Show whether DF, RT, GR, etc.)

Ungraded

DRILLING OPERATIONS
SUBJECT TO
PROPOSED CASING AND CEMENTING PROGRAM

22. APPROX. DATE WORK WILL START*

Winter, 1983

This action is subject to a tentative
appeal pursuant to 30 CFR 250.

SIZE OF HOLE	SIZE OF CASING	WEIGHT PER FOOT	SETTING DEPTH	QUANTITY OF CEMENT
9-7/8"	7"	17#	100'	Cement to the surface
6-1/4"	4-1/2"	9.5#	1,540'	Cement to the surface

It is proposed to drill the above referenced well with rotary tools from the surface to T.D.. The anticipated zone of completion is the Pictured Cliffs Formation. Attached is the 10 Point Drilling Plan and 13 Point Surface Use Plan.

Gas is dedicated to El Paso Natural Gas Company.

IN ABOVE SPACE DESCRIBE PROPOSED PROGRAM: If proposal is to deepen or plug back, give data on present productive zone and proposed new productive zone. If proposal is to drill or deepen directionally, give pertinent data on subsurface locations and measured and true vertical depths. Give blowout preventer program, if any.

24.

SIGNED

(This space for Federal or State office use)

TITLE Field Services Administrator DATE September 23, 1983

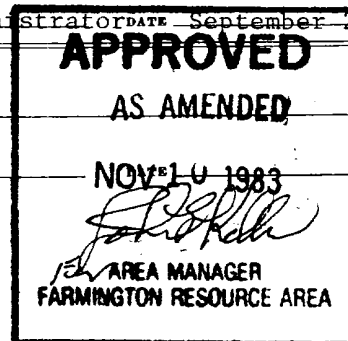
PERMIT NO.

APPROVAL DATE

APPROVED BY

CONDITIONS OF APPROVAL, IF ANY:

TITLE



OIL CONSERVATION DIVISION

STATE OF NEW MEXICO
ENERGY AND MINERALS DEPARTMENT

P. O. BOX 2088

SANTA FE, NEW MEXICO 87501

Form C-107
Revised 10-1-78

All distances must be from the outer boundaries of the Section.

Operator ENERGY RESERVES GROUP, INCORPORATED			Lease GALLEGOS CANYON UNIT		Well No. 334
Unit Letter N	Section 11	Township 28N	Range 12W	County San Juan	
Actual Footage Location of Well: 810 feet from the South line and 1790 feet from the West line					
Ground Level Elev. 5513	Producing Formation Pictured Cliffs		Pool West Kutz Pictured Cliffs		Dedicated Acreage: 160/35/16 Acres

1. Outline the acreage dedicated to the subject well by colored pencil or hachure marks on the plat below.

2. If more than one lease is dedicated to the well, outline each and identify the ownership thereof (both as to working interest and royalty).

3. If more than one lease of different ownership is dedicated to the well, have the interests of all owners been consolidated by communitization, unitization, force-pooling, etc?

☐ Yes ☐ No If answer is "yes," type of consolidation _____

If answer is "no," list the owners and tract descriptions which have actually been consolidated. (Use reverse side of this form if necessary.) _____

No allowable will be assigned to the well until all interests have been consolidated (by communitization, unitization, forced-pooling, or otherwise) or until a non-standard unit, eliminating such interests, has been approved by the Commission.

RECEIVED
NOV 13 1983OIL CON. DIV.
DIST. 3RECEIVED
OCT 31 1983
BUREAU OF LAND MANAGEMENT
FARMINGTON RESOURCE AREA

CERTIFICATION

I hereby certify that the information contained herein is true and complete to the best of my knowledge and belief.

Name

Position

Field Services Administrator

Company

Energy Reserves Group, Inc.

Date

September 23, 1983

I hereby certify that the well location shown on this plat was plotted from field notes of actual surveys made by me or under my supervision, and that the same is true and correct to the best of my knowledge and belief.

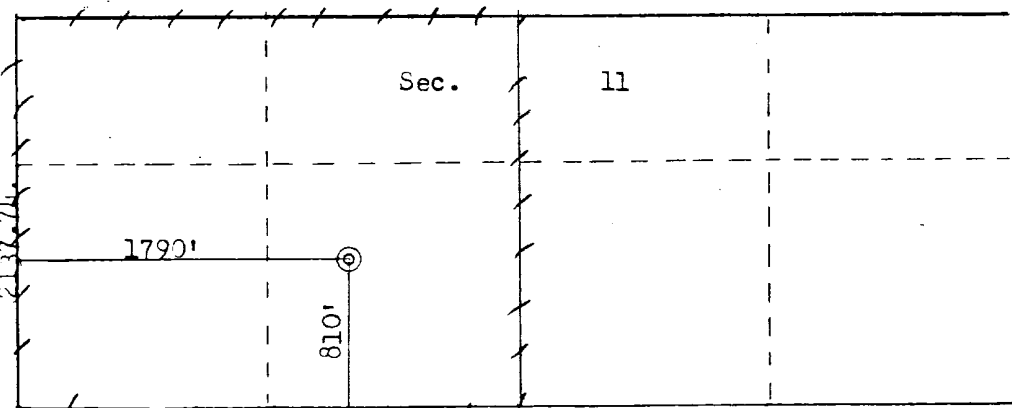
Date Surveyed April 19, 1982

Re-issued September 21, 1983

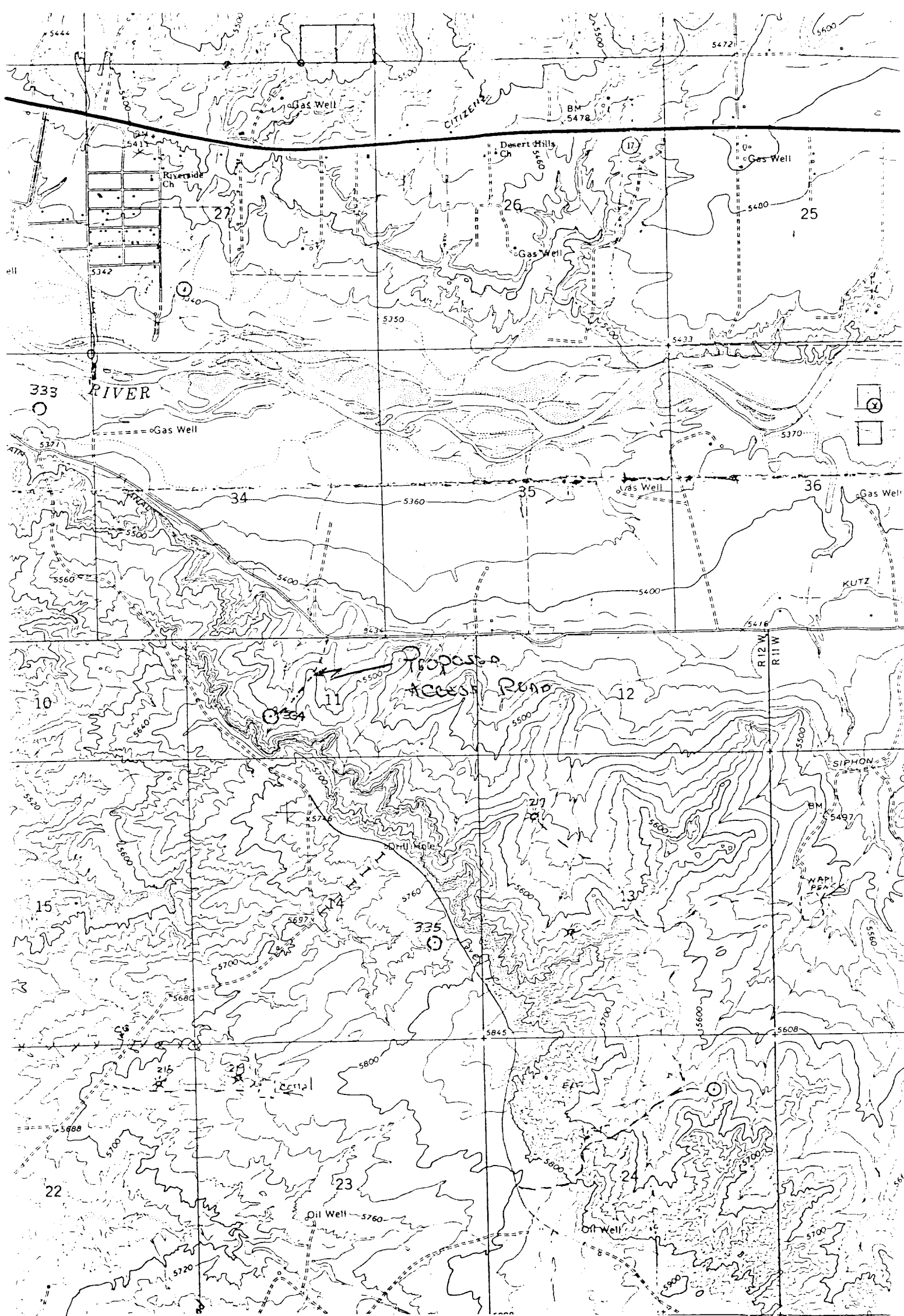
Registered Professional Engineer
and Land Surveyor

Fred B. Kerr Jr.

Certificate No. 3950



Scale: 1"=1000'



Vicinity Map for
 ENERGY RESERVES GROUP, INC. #334 GALLEGOS CANYON UNIT
 810'FSL 1790'FWL Sec. 11-T28N-R12W
 SAN JUAN COUNTY, NEW MEXICO