

UNITED STATES
DEPARTMENT OF THE INTERIOR
BUREAU OF LAND MANAGEMENT

APPLICATION FOR PERMIT TO DRILL, DEEPEN, OR PLUG BACK

1a. TYPE OF WORK

DRILL ☒

DEEPEN ☐

PLUG BACK ☐

b. TYPE OF WELL

OIL
WELL ☐

GAS
WELL ☒

OTHER

SINGLE
ZONE ☒

MULTIPLE
ZONE ☐

2. NAME OF OPERATOR

Amoco Production Company

3. ADDRESS OF OPERATOR

501 Airport Drive, Farmington, NM 87401

4. LOCATION OF WELL (Report location clearly and in accordance with any State requirements*)

At surface

1850' FNL x 790' FWL

At proposed prod. zone Same

14. DISTANCE IN MILES AND DIRECTION FROM NEAREST TOWN OR POSTOFFICE AND NEAREST FARMINGTON RESOURCE AREA

14 miles south of Bloomfield, NM

15. DISTANCE FROM PROPOSED*

LOCATION TO NEAREST
PROPERTY OR LEASE LINE, FT.
(Also to nearest drlg. unit line, if any)

790'

18. DISTANCE FROM PROPOSED LOCATION*
TO NEAREST WELL, DRILLING, COMPLETED,
OR APPLIED FOR, ON THIS LEASE, FT.

1200' E

16. NO. OF ACRES IN LEASE

1593.85

19. PROPOSED DEPTH

6479'

17. NO. OF ACRES ASSIGNED
TO THIS WELL

320 1/315.96

20. ROTARY OR CABLE TOOLS

Rotary

21. ELEVATIONS (Show whether DF, RT, GR, etc.)

5911' GR

DRILLING OF THIS WELL IS SUBJECT TO THE FOLLOWING CONDITIONS:

23.

PROPOSED CASING AND CEMENTING PROGRAM

22. APPROX. DATE WORK WILL START*

As soon as permitted

This action is subject to administrative
appeal pursuant to 30 CFR 290.
QUANTITY OF CEMENT

SIZE OF HOLE	SIZE OF CASING	WEIGHT PER FOOT	SETTING DEPTH	QUANTITY OF CEMENT
12-1/4"	8-5/8"	24#, J-55	300'	354 c.f. Class B
8-3/4"	4-1/2"	10.5#, K-55	6479'	1454 c.f. Class B

(This string may be two staged
but the cement types and volumes
remain the same).

Amoco proposes to drill the above well to further develop the Basin Dakota reservoir. The well will be drilled to the surface casing point using native mud. The well will then be drilled to TD with a low solids nondispersed mud system. Completion design will be based on open hole logs. Copy of all logs will be filed upon completion. Amoco's standard blowout prevention will be employed; see attached drawing for blowout preventer design. Upon completion the well site will be cleaned and the reserve pit filled and leveled. The gas from this well is dedicated to El Paso Natural Gas under contract No. 56,742.

IN ABOVE SPACE DESCRIBE PROPOSED PROGRAM: If proposal is to deepen or plug back, give data on present productive zone and proposed new productive zone. If proposal is to drill or deepen directionally, give pertinent data on subsurface locations and measured and true vertical depths. Give blowout preventer program, if any.

24.

SIGNED

BDS Shaw

TITLE Administrative Supervisor 10/26/84

(This space for Federal or State comments)

PERMIT NO.

APPROVAL DATE

APPROVED BY

CONDITIONS OF APPROVAL, IF ANY:

chz

OIL CON. DIV.
DIST. 3

NMOCC

*See Instructions On Reverse Side

APPROVED
AS AMENDED
NOV 13 1984
DATE
AREA MANAGER FARMINGTON RESOURCE AREA

All distances must be from the corner boundaries of the Section.

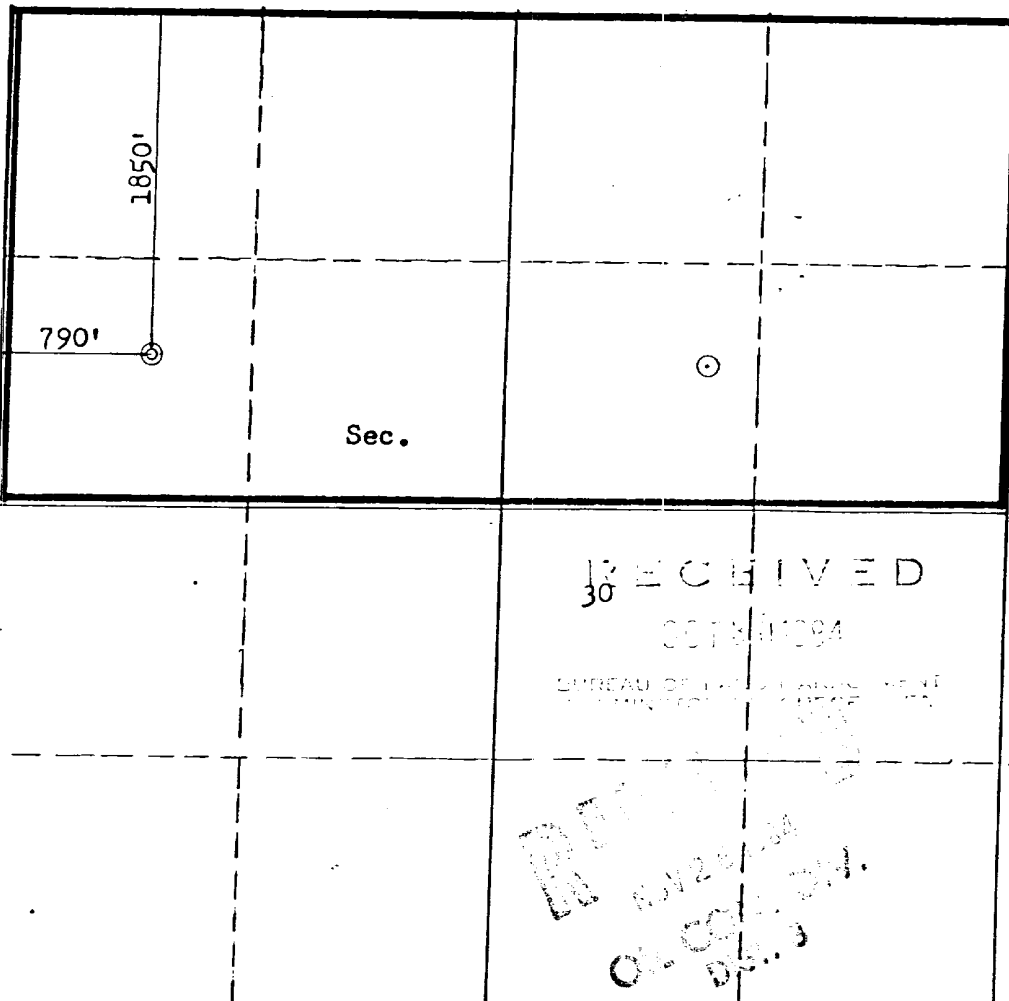
Operator AMOCO PRODUCTION COMPANY			Lease T. L. RHODES "C"		Well No. 1E
Unit Letter E	Section 30	Township 28N	Range 11W	County San Juan	
Actual Footage Location of Well:					
1850		feet from the North		line and 790	
				feet from the West	
Ground Level Elev: 5911		Producing Formation Dakota		Pool Basin Dakota	
				Dedicated Acreage: 320 3/29 Acres	

1. Outline the acreage dedicated to the subject well by colored pencil or hachure marks on the plat below.
2. If more than one lease is dedicated to the well, outline each and identify the ownership thereof (both as to working interest and royalty).
3. If more than one lease of different ownership is dedicated to the well, have the interests of all owners been consolidated by communitization, unitization, force-pooling, etc?

☐ Yes ☒ No If answer is "yes," type of consolidation _____

If answer is "no," list the owners and tract descriptions which have actually been consolidated. (Use reverse side of this form if necessary.) _____

No allowable will be assigned to the well until all interests have been consolidated (by communitization, unitization, forced-pooling, or otherwise) or until a non-standard unit, eliminating such interests, has been approved by the Commission.



Scale: 1"=1000'

CERTIFICATION

I hereby certify that the information contained herein is true and complete to the best of my knowledge and belief.

B.D. Shaw

Name

B.D. Shaw

Position

Administrative Supervisor

Company

Amoco Production Company

Date

10/26/84

I hereby certify that the well location shown on this plat was plotted from field notes of actual surveys made by me or under my supervision, and that the same is true and correct to the best of my knowledge and belief.

Date Surveyed

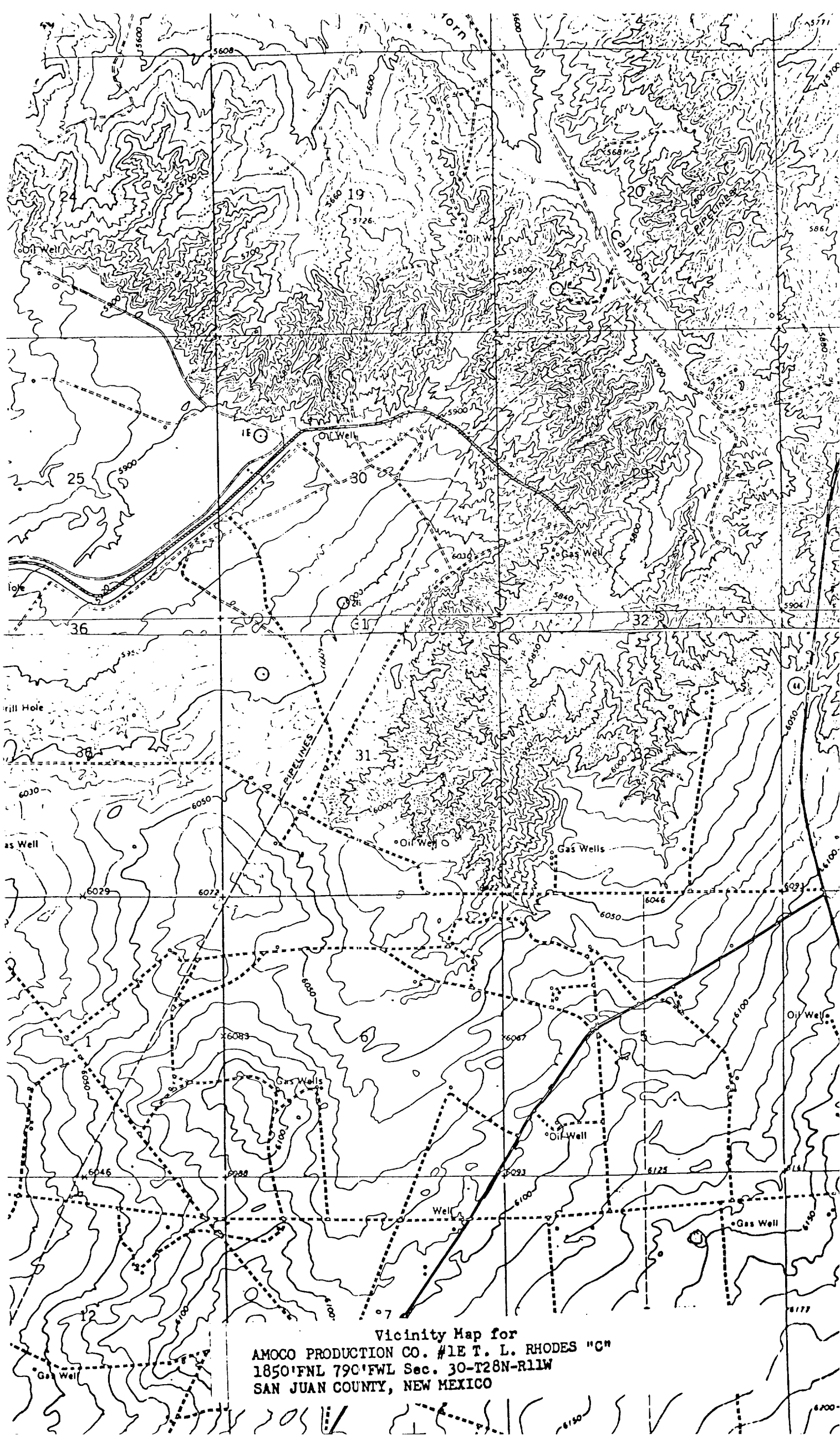
September 14, 1984

Registered Professional Engineer and Land Surveyor

Fred B. Kerr Jr.
Fred B. Kerr Jr.

Certificate No.

3950



Vicinity Map for
AMOCO PRODUCTION CO. #1E T. L. RHODES "C"
1850'FNL 790'FWL Sec. 30-T28N-R11W
SAN JUAN COUNTY, NEW MEXICO