

Proposed Bottom Hole Location.

NEW MEXICO OIL CONSERVATION COMMISSION
WELL LOCATION AND ACREAGE DEDICATION PLAT

Form C-102
Supersedes C-73
Effective 1-4-65

All distances must be from the outer boundaries of the Section.

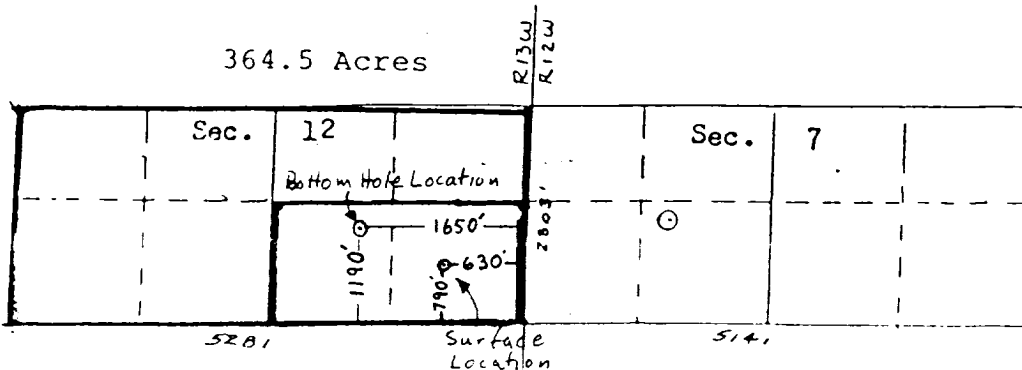
Operator AMOCO PRODUCTION COMPANY			Lease GALLEGOS CANYON UNIT			Well No. 222E		
Unit Letter 0	Section 12	Township 28N	Range 13W	County San Juan				
Actual Footage Location of Well: 1190 feet from the South line and 1650 feet from the East line								
Ground Level Elev: 5678	Producing Formation Dakota & Gallup			Pool Basin Dakota/Totah Gallup		Dedicated Acreage: 364.5/80 Acres		

1. Outline the acreage dedicated to the subject well by colored pencil or hatchure marks on the plat below.
2. If more than one lease is dedicated to the well, outline each and identify the ownership thereof (both as to working interest and royalty).
3. If more than one lease of different ownership is dedicated to the well, have the interests of all owners been consolidated by communitization, unitization, force-pooling, etc?

☒ Yes ☐ No If answer is "yes," type of consolidation Unitized

If answer is "no," list the owners and tract descriptions which have actually been consolidated. (Use reverse side of this form if necessary.)

No allowable will be assigned to the well until all interests have been consolidated (by communitization, unitization, forced-pooling, or otherwise) or until a non-standard unit, eliminating such interests, has been approved by the Commission.



Scale: 1"=2000'

Proposed Bottom Hole Location.

RECEIVED

MAY 15 1985

BUREAU OF LAND MANAGEMENT
FARMINGTON RESOURCE AREA

NMOCC

CERTIFICATION

I hereby certify that the information contained herein is true and complete to the best of my knowledge and belief.

Original Signed by

Name **D.D. Lawson**
D. D. Lawson

Position **Dist.**
Adm. Supervisor

Company
Amoco Production Co.

Date
1-31-85

I hereby certify that the well location shown on this plat was plotted from field notes of actual surveys made by me or under my supervision, and that the same is true and correct to the best of my knowledge and belief.

Date Surveyed

February 1, 1985
Registered Professional Engineer
and
Range Surveyor
Fred B. Kern, Jr.
Certificate No. **114**