

UNITED STATES
DEPARTMENT OF THE INTERIOR
BUREAU OF LAND MANAGEMENT

APPLICATION FOR PERMIT TO DRILL, DEEPEN, OR PLUG BACK

1a. TYPE OF WORK

DRILL ☒

DEEPEN ☐

PLUG BACK ☐

b. TYPE OF WELL

OIL
WELL ☒

GAS
WELL ☐

OTHER

SINGLE
ZONE ☐

MULTIPLE
ZONE ☒

2. NAME OF OPERATOR

Amoco Production Company

3. ADDRESS OF OPERATOR

501 Airport Drive, Farmington, NM 87401

4. LOCATION OF WELL (Report location clearly and in accordance with any State requirements.*)

At surface

1850' FSL x 1850' FEL

At proposed prod. zone Same

14. DISTANCE IN MILES AND DIRECTION FROM NEAREST TOWN OR POST OFFICE*

15 miles southeast of Farmington, NM BUREAU OF LAND MANAGEMENT

15. DISTANCE FROM PROPOSED*

LOCATION TO NEAREST

PROPERTY OR LEASE LINE, FT.

(Also to nearest drg. unit line, if any)

1450'

16. NO. OF ACRES IN LEASE

43,146.62 1760

18. DISTANCE FROM PROPOSED LOCATION*

TO NEAREST WELL, DRILLING, COMPLETED,

OR APPLIED FOR, ON THIS LEASE, FT.

1/2 mi. N

19. PROPOSED DEPTH

6010'

21. ELEVATIONS (Show whether DF, RT, GR, etc.)

5778' GR

DRILLING OPERATIONS AUTHORIZED ARE

23.

SUBJECT TO COMPLIANCE WITH ATTACHED

"GENERAL REQUIREMENTS"

PROPOSED CASING AND CEMENTING PROGRAM

22. APPROX. DATE WORK WILL START*

As soon as permitted

This action is subject to administrative
appeal pursuant to 30 CFR 290.

SIZE OF HOLE	SIZE OF CASING	WEIGHT PER FOOT	SETTING DEPTH	QUANTITY OF CEMENT
12-1/4"	9-5/8"	32.3#, H-40	300'	354 c.f. Class B
8-3/4"	7"	20#, K-55	6010'	1364 c.f. Class B

Amoco proposes to drill the above well to further develop the Basin DK and Simpson GP reservoirs. The well will be drilled to the surface casing point using native mud. The well will then be drilled to TD with a low solids nondispersed mud system. Completion design will be based on open hole logs. Copy of all logs will be filed upon completion. Amoco's standard blowout prevention will be employed; see attached drawing for blowout preventer design. Upon completion the well site will be cleaned and the reserve pit filled and leveled. The gas from this well is dedicated to El Paso Natural Gas under contract No. 56742.

IN ABOVE SPACE DESCRIBE PROPOSED PROGRAM: If proposal is to deepen or plug back, give data on present productive zone and proposed new productive zone. If proposal is to drill or deepen directionally, give pertinent data on subsurface locations and measured and true vertical depths. Give blowout prevention program, if any.

24. Original Signed By D.D. Lawson District Administrative Supervisor

(This space for Federal or State office use)

PERMIT NO.

APPROVAL DATE

APPROVED BY

CONDITIONS OF APPROVAL, IF ANY:

FEB 01 1985
OIL CON. DIV.
DIST. 3

*See Instructions On Reverse Side

APPROVED
AS AMENDED
JAN 30 1985
AREA MANAGER FARMINGTON RESOURCE AREA

OIL CONSERVATION DIVISION

STATE OF NEW MEXICO
ENERGY AND MINERALS DEPARTMENTP. O. BOX 2088
SANTA FE, NEW MEXICO 87501Form C-107
Revised 10-1-78

All distances must be from the outer boundaries of the Section.

Operator AMOCO PRODUCTION COMPANY			Lease GALLEGOS CANYON UNIT		Well No. 233E
Unit Letter J	Section 27	Township 28N	Range 12W	County San Juan	
Actual Footage Location of Well: 1850 feet from the South line and 1850 feet from the East line					
Ground Level Elev: 5778	Producing Formation Dakota & Gallup		Pool Basin Dakota/Simpson Gallup		Dedicated Acreage: 320/40 Acres

1. Outline the acreage dedicated to the subject well by colored pencil or hatchure marks on the plat below.
2. If more than one lease is dedicated to the well, outline each and identify the ownership thereof (both as to working interest and royalty).
3. If more than one lease of different ownership is dedicated to the well, have the interests of all owners been consolidated by communitization, unitization, force-pooling, etc?

☒ Yes ☐ No If answer is "yes," type of consolidation Unitized

If answer is "no," list the owners and tract descriptions which have actually been consolidated. (Use reverse side of this form if necessary.)

No allowable will be assigned to the well until all interests have been consolidated (by communitization, unitization, forced-pooling, or otherwise) or until a non-standard unit, eliminating such interests, has been approved by the Commission.

Sec.		RECEIVED JAN 21 1985 BUREAU OF LAND MANAGEMENT FARMINGTON RESOURCE AREA	
FEB 01 1985 OIL CON. DIV. DIST. 3		27	
		1850'	
		1850'	

Scale: 1"=1000'

CERTIFICATION

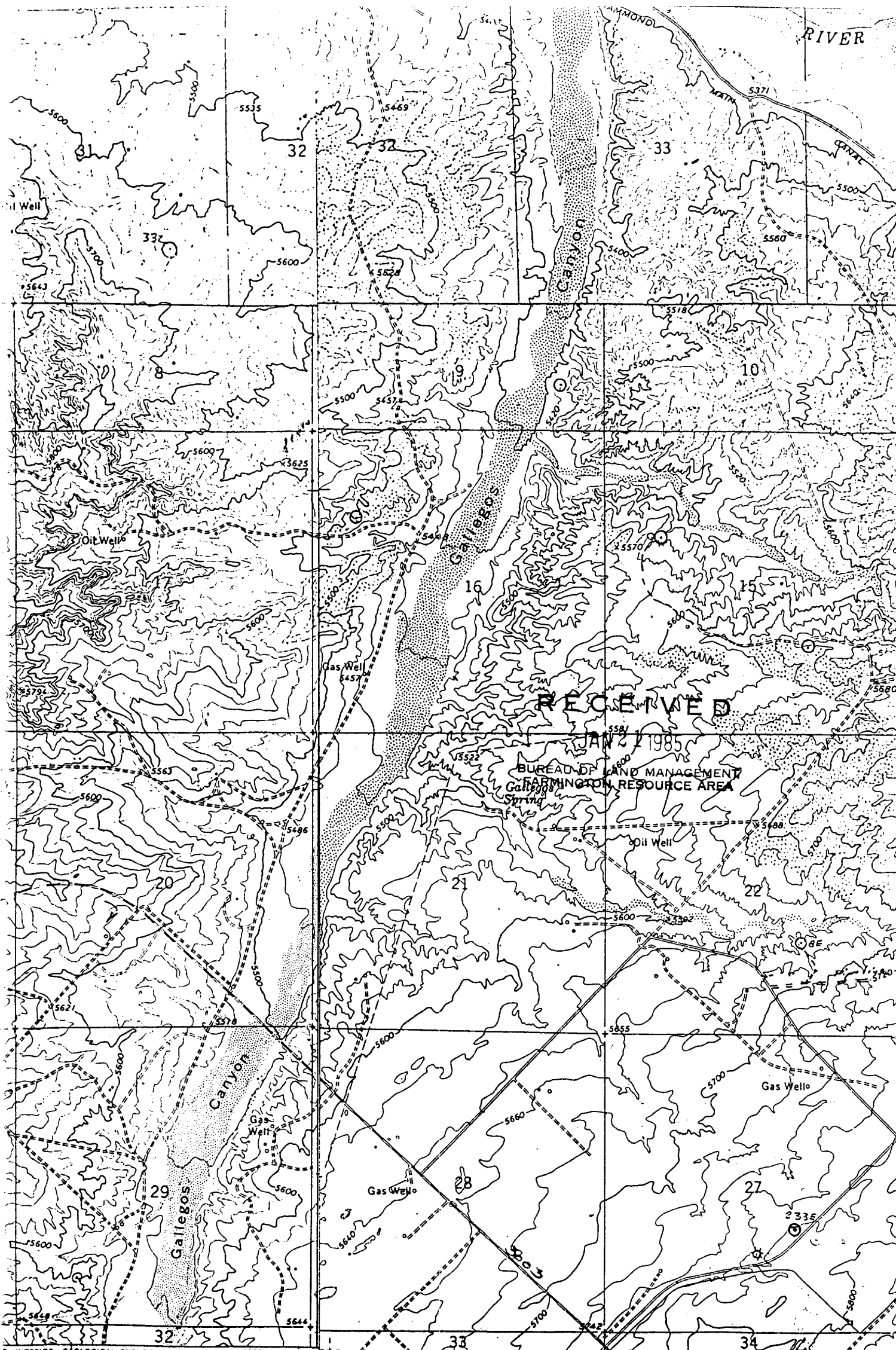
I hereby certify that the information contained herein is true and complete to the best of my knowledge and belief.

Original Signed By
D.D. LawsonName
D.D. LawsonPosition
Dist. Admin. SupervisorCompany
Amoco Production CompanyDate
1/16/85

I hereby certify that the well location shown on this plat was plotted from field notes of actual surveys made by me or under my supervision, and that the same is true and correct to the best of my knowledge and belief.

Date Surveyed
December 13, 1984Registered Professional Engineer
and Land Surveyor**Fred B. Kern Jr.**Certificate No. **2, KERN, JR.**

3950



INTERIOR GEOLOGICAL SURVEY, RESTON, VIRGINIA—1980
756000m E

108° 07' 30" 158 1420 000 FEET 760

ROAD CLASSIFICATION

Mapped, edited, and published by the Geological Survey

- duty
- duty
- U. S. Route

Vicinity Map for
AMOCO PRODUCTION CO. #233E GALLEGOS CANYON UNIT
1850' FSL 1850' FEL Sec. 27-T28N-R12W
SAN JUAN COUNTY, NEW MEXICO

west zone
1000 meter Universal Transverse Mercator grid ticks,
page 12, shown in blue

