

UNITED STATES  
DEPARTMENT OF THE INTERIOR  
BUREAU OF LAND MANAGEMENT

SUBMIT IN TRIPLICATE\*  
(Other instructions on  
reverse side)

Form approved.  
Budget Bureau No. 1004-0136  
Expires August 31, 1985

APPLICATION FOR PERMIT TO DRILL, DEEPEN, OR PLUG BACK

1a. TYPE OF WORK  
DRILL ☒ DEEPEN ☐ PLUG BACK ☐

b. TYPE OF WELL  
OIL WELL ☐ GAS WELL ☒ OTHER ☐

2. NAME OF OPERATOR  
Amoco Production Company

3. ADDRESS OF OPERATOR  
501 Airport Drive, Farmington, NM 87401

4. LOCATION OF WELL (Report location clearly and in accordance with any State requirements.)  
At surface 1010' FSL x 1190' FWL  
At proposed prod. zone Same

14. DISTANCE IN MILES AND DIRECTION FROM NEAREST TOWN OR POST OFFICE  
8 miles southeast of Farmington, NM

15. DISTANCE FROM PROPOSED LOCATION TO NEAREST PROPERTY OR LEASE LINE, FT.  
(Also to nearest drilg. unit line, if any) 1120'

16. NO. OF ACRES IN LEASE  
43,146.62/1600

17. NO. OF ACRES ASSIGNED TO THIS WELL  
320

18. PROPOSED DEPTH  
6480'

19. DISTANCE FROM PROPOSED LOCATION TO NEAREST WELL, DRILLING, COMPLETED, OR APPLIED FOR, ON THIS LEASE, FT.  
1/4 mile SW

20. ROTARY OR CABLE TOOLS  
Rotary

21. ELEVATIONS (Show whether DF, RT, or GR)  
6012' GR

22. APPROX. DATE WORK WILL START  
As soon as permitted

23. DRILLING OPERATIONS AUTHORIZED ARE  
SUBJECT TO COMPLIANCE WITH ATTACHED  
"GENERAL REQUIREMENTS"  
PROPOSED CASING AND CEMENTING PROGRAM

SIZE OF HOLE	SIZE OF CASING	WEIGHT PER FOOT	SETTING DEPTH	QUANTITY OF CEMENT
12-1/4"	8-5/8"	24#, K-55	300'	354 c.f. Class B
7-7/8"	4-1/2"	10.5#, K-55	6480'	2221 c.f. Class B

Amoco proposes to drill the above well to further develop the Basin Dakota reservoir. The well will be drilled to the surface casing point using native mud. The well will then be drilled to TD with a low solids nondispersed mud system. Completion design will be based on open hole logs. Copy of all logs will be filed upon completion. Amoco's standard blowout prevention will be employed; see attached drawing for blowout preventer design. Upon completion the well site will be cleaned and the reserve pit filled and leveled. The gas from this well is dedicated to El Paso Natural Gas under contract No. 56742.

RECEIVED

MAR 15 1985

OIL CON. DIV.  
DIST. 3

IN ABOVE SPACE DESCRIBE PROPOSED PROGRAM: If proposal is to deepen or plug back, give data on present productive zone and proposed new productive zone. If proposal is to drill or deepen directionally, give pertinent data on subsurface locations and measured and true vertical depths. Give blowout preventer program, if any.

24. Original signed By  
S. D. Shaw  
TITLE Administrative Supervisor

(This space for Federal or State office use)

PERMIT NO. \_\_\_\_\_ APPROVAL DATE \_\_\_\_\_

APPROVED BY \_\_\_\_\_ TITLE \_\_\_\_\_

CONCURRENCE OF APPROVAL, IF ANY:

APPROVED  
DATE 3/13/85

AS AMENDED  
MAR 13 1985

DATE 3/13/85  
AREA MANAGER  
FARMINGTON RESOURCE AREA

\*See Instructions On Reverse Side

All distances must be from the outer boundaries of the Section.

PRODUCTION COMPANY		Lease		Well No.	
		GALLEGOS CANYON UNIT		236E	
Section	Township	Range	County		
14	28N	13W	San Juan		
Actual Footage Location of Well:					
1010	feet from the	South	line and	1190	feet from the
					West
					line
Ground Level Elev:	Producing Formation	Pool		Dedicated Acreage:	
6012	Dakota	Basin Dakota		320 Acres	

1. Outline the acreage dedicated to the subject well by colored pencil or hatchure marks on the plat below.
2. If more than one lease is dedicated to the well, outline each and identify the ownership thereof (both as to working interest and royalty).
3. If more than one lease of different ownership is dedicated to the well, have the interests of all owners been consolidated by communitization, unitization, force-pooling, etc?

☒ Yes    ☐ No    If answer is "yes," type of consolidation Unitized

If answer is "no," list the owners and tract descriptions which have actually been consolidated. (Use reverse side of this form if necessary.) \_\_\_\_\_

No allowable will be assigned to the well until all interests have been consolidated (by communitization, unitization, forced-pooling, or otherwise) or until a non-standard unit, eliminating such interests, has been approved by the Commission.

RECEIVED  
MAR 15 1985  
OIL CON. DIV.  
DIST. 3

RECEIVED  
JAN 29 1985  
BUREAU OF LAND MANAGEMENT  
FARMINGTON RESOURCE AREA

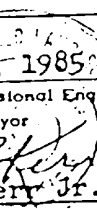
Sec.

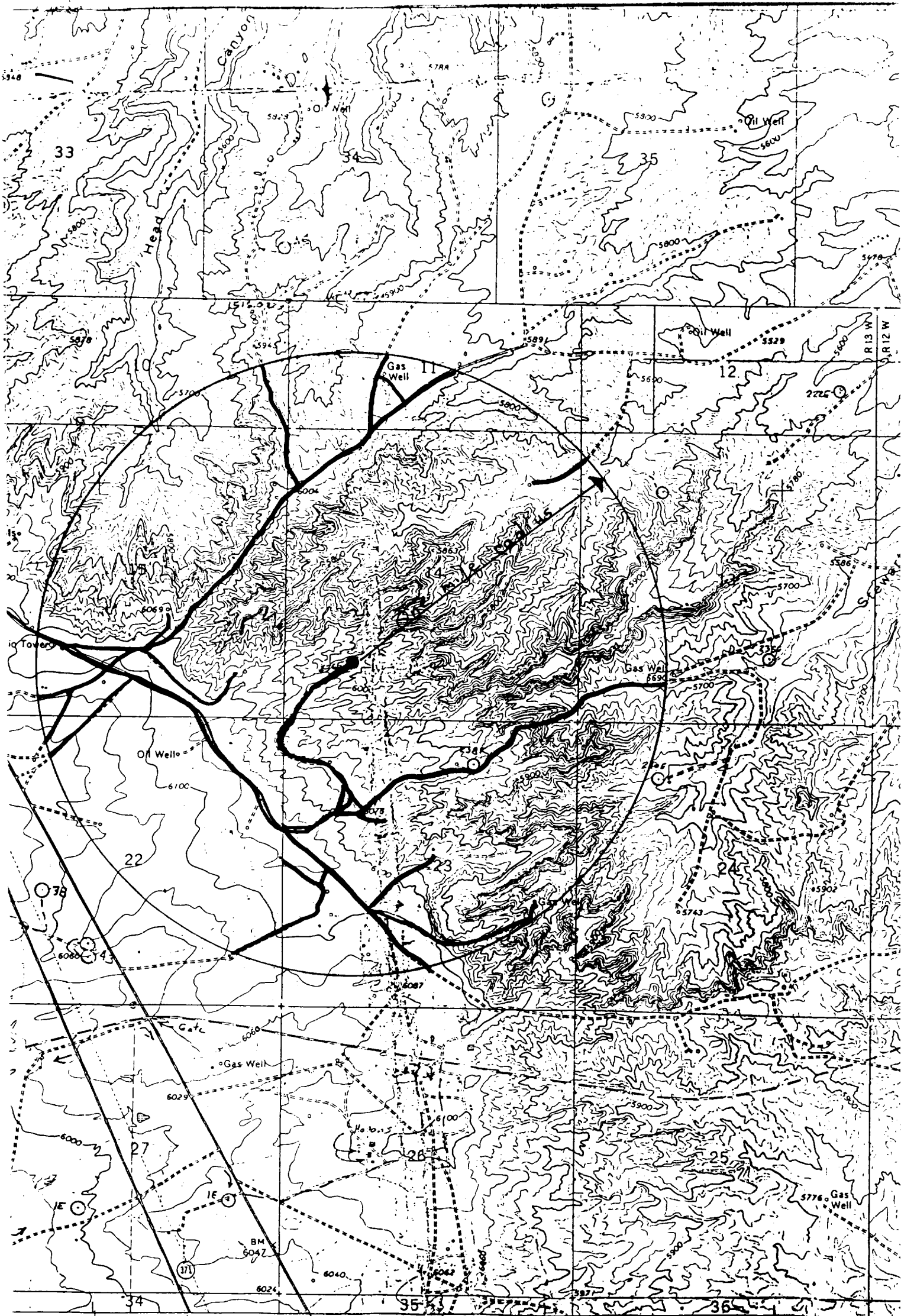
14

1190'

1010'

Scale: 1"=1000'

<p align="center"><b>CERTIFICATION</b></p> <p><i>I hereby certify that the information contained herein is true and complete to the best of my knowledge and belief.</i></p> <p><b>Original Signed By</b></p> <p align="center"><b>E. D. Shaw</b></p>	
Name	E. D. Shaw
Position	Administrative Supervisor
Company	Amoco Production Co.
Date	1/24/85
<p><i>I hereby certify that the well location shown on this plat was plotted from field notes of actual surveys made by me or under my supervision, and that the same is true and correct to the best of my knowledge and belief.</i></p>	
Date Surveyed	January 17, 1985
Registered Professional Engineer and Land Surveyor	 <p><b>Fred B. Kerr, Jr.</b></p>
Certificate No.	3950



12'80" Exhibit B

Vicinity Map for  
 AMOCO PRODUCTION CO. #236E GALLEGOS CANYON UNIT  
 1010' FSL 1190' FWL Sec. 14-T28N-R13W  
 SAN JUAN COUNTY, NEW MEXICO

— = Existing roads  
 — = New roads



CONTOUR INTERVAL 20 FEET  
 DOTTED LINES REPRESENT 10-FOOT CONTOURS  
 NATIONAL GEODETIC VERTICAL DATUM OF 1929