

UNITED STATES
DEPARTMENT OF THE INTERIOR
GEOLOGICAL SURVEY

APPLICATION FOR PERMIT TO DRILL, DEEPEN, OR PLUG BACK

1. TYPE OF WORK

DRILL ☒DEEPEN ☐PLUG BACK ☐

2. TYPE OF WELL

OIL

WELL ☐

GAS

WELL ☒

OTHER

☐

SINGLE

ZONE ☒

MULTIPLE

ZONE ☐

3. NAME OF OPERATOR

Energy Reserves Group, Inc.

4. ADDRESS OF OPERATOR

P. O. Box 3280; Casper, WY 82603

5. LOCATION OF WELL (Report location clearly and in accordance with any State requirements.)

At surface

At proposed prod. zone

800' FSL 810' FEL SE/SE

11. DISTANCE IN MILES AND DIRECTION FROM NEAREST TOWN OR POST OFFICE*

Approximately 9 miles South East of Farmington, New Mexico

15. DISTANCE FROM PROPOSED*

LOCATION TO NEAREST
PROPERTY OR LEASE LINE, FT.
(Also to nearest drlg. unit line, if any)

790

16. NO. OF ACRES IN LEASE

2,811.19

18. DISTANCE FROM PROPOSED LOCATION*

TO NEAREST WELL, DRILLING, COMPLETED,
OR APPLIED FOR, ON THIS LEASE, FT.

1,000'

19. PROPOSED DEPTH

1,640

17. NO. OF ACRES ASSIGNED
TO THIS WELL

160 135.39

20. ROTARY OR CABLE TOOLS

Rotary

21. ELEVATIONS (Show whether DF, RT, GR, etc.)

5,637' GR ungraded

DRILLING OPERATIONS AUTHORIZED ARE
SUBJECT TO COMPLIANCE WITH ATTACHED

22. APPROX. DATE WORK WILL START*

As soon as approved

23. PROPOSED CEMENTING AND CEMENTING PROGRAM

SIZE OF HOLE	SIZE OF CASING	WEIGHT PER FOOT	SETTING DEPTH	QUANTITY OF CEMENT
12 1/4"	8 5/8"	24#	135'	130 SX
6 1/4"	4 1/2"	10.5#	1640'	250 SX - Cement to surface

This action is subject to technical and
procedural review pursuant to 43 CFR 3165.3
and appeal pursuant to 43 CFR 3165.4.

RECEIVED

JUN 14 1985

OIL CON. DIV.
DIST. 3

14. ABOVE SPACE DESCRIBE PROPOSED PROGRAM: If proposal is to deepen or plug back, give data on present productive zone and proposed new productive zone. If proposal is to drill or deepen directionally, give pertinent data on subsurface locations and measured and true vertical depths. Give blowout preventer program, if any.

24

SIGNED

TITLE

Administrator, Field Svcs.

DATE

5/13/85

(This space for Federal or State-office use)

PERMIT NO.

APPROVAL DATE

APPROVED BY

TITLE

CONDITIONS OF APPROVAL, IF ANY:

DATE

JUN 13 1985

For M. MILLENBACH
AREA MANAGER

NMOCC

NEW MEXICO OIL CONSERVATION COMMISSION
WELL LOCATION AND ACREAGE DEDICATION PLAT

Form C-102
Supersedes C-128
Effective 1-1-55

All distances must be from the outer boundaries of the Section.

Operator ENERGY RESERVES GROUP		Lease GALLEGOS CANYON UNIT		Well No. 351
Unit Letter P	Section 10	Township 28N	Range 12W	County San Juan
Actual Footage Location of Well: 300 feet from the South line and 810 feet from the East line				
Ground Level Elev. 5637	Producing Formation Pictured Cliffs	Pool West Kutz Pictured Cliffs	Dedicated Acreage: 135.39 Acres	

1. Outline the acreage dedicated to the subject well by colored pencil or hatchure marks on the plat below.
2. If more than one lease is dedicated to the well, outline each and identify the ownership thereof (both as to working interest and royalty).
3. If more than one lease of different ownership is dedicated to the well, have the interests of all owners been consolidated by communitization, unitization, force-pooling, etc?

☐ Yes ☐ No If answer is "yes," type of consolidation _____

If answer is "no," list the owners and tract descriptions which have actually been consolidated. (Use reverse side of this form if necessary.) _____

No allowable will be assigned to the well until all interests have been consolidated (by communitization, unitization, forced-pooling, or otherwise) or until a non-standard unit, eliminating such interests, has been approved by the Commission.

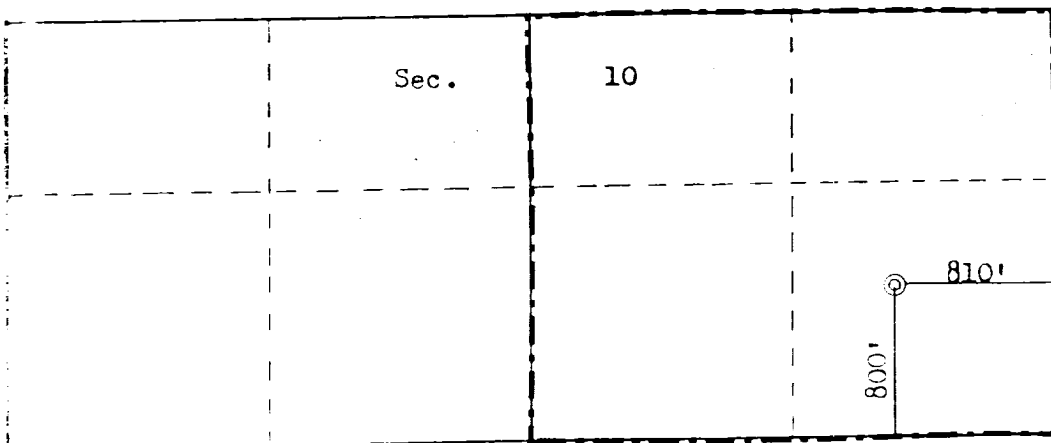
RECEIVED

MAY 17 1985

BUREAU OF LAND MANAGEMENT
FARMINGTON RESOURCE AREA

GAS is dedicated to El Paso Natural Gas Company.

135.39 acres



Scale: 1"=1000'

CERTIFICATION

I hereby certify that the information contained herein is true and complete to the best of my knowledge and belief.

Name
William J. Fiant
Position
Administrator, Field Services
Company
Energy Reserves Group, Inc.
Date
5/3/85

I hereby certify that the well location shown on this plat was plotted from field notes of actual surveys made by me or under my supervision, and that the same is true and correct to the best of my knowledge and belief.

Date Surveyed
April 23, 1985
Registered Professional Engineer and Land Surveyor
Fred B. Kerr Jr.
Certificate No. 3950