

UNITED STATES
DEPARTMENT OF THE INTERIOR
GEOLOGICAL SURVEY

APPLICATION FOR PERMIT TO DRILL, DEEPEN, OR PLUG BACK

1a. TYPE OF WORK

DRILL ☒DEEPEN ☐PLUG BACK ☐

b. TYPE OF WELL

OIL
WELL ☐GAS
WELL ☒

OTHER

SINGLE
ZONE ☒MULTIPLE
ZONE ☐

2. NAME OF OPERATOR

Energy Reserves Group, Inc.

3. ADDRESS OF OPERATOR

P. O. Box 3280; Casper, WY 82602

4. LOCATION OF WELL (Report location clearly and in accordance with any State requirements.)

At surface

At proposed prod. zone

900' FNL 820' FEL NE/NE

14. DISTANCE IN MILES AND DIRECTION FROM NEAREST TOWN OR POST OFFICE*

Approximately 10 1/2 miles Southeast of Farmington, New Mexico

15. DISTANCE FROM PROPOSED*

LOCATION TO NEAREST

PROPERTY OR LEASE LINE, FT.

(Also to nearest drlg. unit line, if any)

820'

16. NO. OF ACRES IN LEASE

480

17. NO. OF ACRES ASSIGNED

TO THIS WELL

160

18. DISTANCE FROM PROPOSED LOCATION*
TO NEAREST WELL, DRILLING, COMPLETED,
OR APPLIED FOR, ON THIS LEASE, FT.DRILLING OPERATIONS AUTHORIZED ARE
SUBJECT TO COMPLIANCE WITH ATTACHED
"GENERAL REQUIREMENTS".

19. PROPOSED DEPTH

1,580'

20. ROTARY OR CABLE TOOLS

Rotary

21. ELEVATIONS (Show whether DF, RT, GR, etc.)

5,579' GR ungraded

22. APPROX. DATE WORK WILL START*

As soon as approved.

23.

PROPOSED CASING AND CEMENTING PROGRAM

SIZE OF HOLE	SIZE OF CASING	WEIGHT PER FOOT	SETTING DEPTH	QUANTITY OF CEMENT
12 1/4"	8 5/8"	24#	135'	100 SX
6 1/4"	4 1/2"	10.5#	1,580'	225 SX

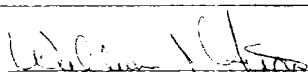
This action is subject to technical and
procedural review pursuant to 43 CFR 3165.3
and appeal pursuant to 43 CFR 3165.4.

RECEIVED
JUN 14 1985
OIL COR. DIV.
DIST. 3

IN ABOVE SPACE DESCRIBE PROPOSED PROGRAM: If proposal is to deepen or plug back, give data on present productive zone and proposed new productive zone. If proposal is to drill or deepen directionally, give pertinent data on subsurface locations and measured and true vertical depths. Give blowout preventer program, if any.

24.

SIGNED



TITLE Administrator, Field Svcs

DATE 5/13/85

(This space for Federal or State office use)

PERMIT NO.

APPROVAL DATE

APPROVED BY

TITLE

DATE

CONDITIONS OF APPROVAL, IF ANY:

APPROVED
AS AMENDED

JUN 13 1985

/s/ J. Stan McKee

for M. MILLENBACH
AREA MANAGER

NMOCC

NEW MEXICO OIL CONSERVATION COMMISSION
WELL LOCATION AND ACREAGE DEDICATION PLAT

Form C-102
Supersedes C-128
Effective 1-1-65

All distances must be from the outer boundaries of the Section.

Operator ENERGY RESERVES GROUP			Lease GALLEGOS CANYON UNIT		Well No. 352
Unit Letter A	Section 14	Township 28N	Range 12W	County San Juan	
Actual Footage Location of Well: 900 feet from the North line and 820 feet from the East line					
Ground Level Elev: 5579	Producing Formation Pictured Cliffs		Pool West Kutz Pictured Cliffs		Dedicated Acreage: 160 Acres

1. Outline the acreage dedicated to the subject well by colored pencil or hachure marks on the plat below.
2. If more than one lease is dedicated to the well, outline each and identify the ownership thereof (both as to working interest and royalty).
3. If more than one lease of different ownership is dedicated to the well, have the interests of all owners been consolidated by communitization, unitization, force-pooling, etc?

☐ Yes ☐ No If answer is "yes," type of consolidation _____

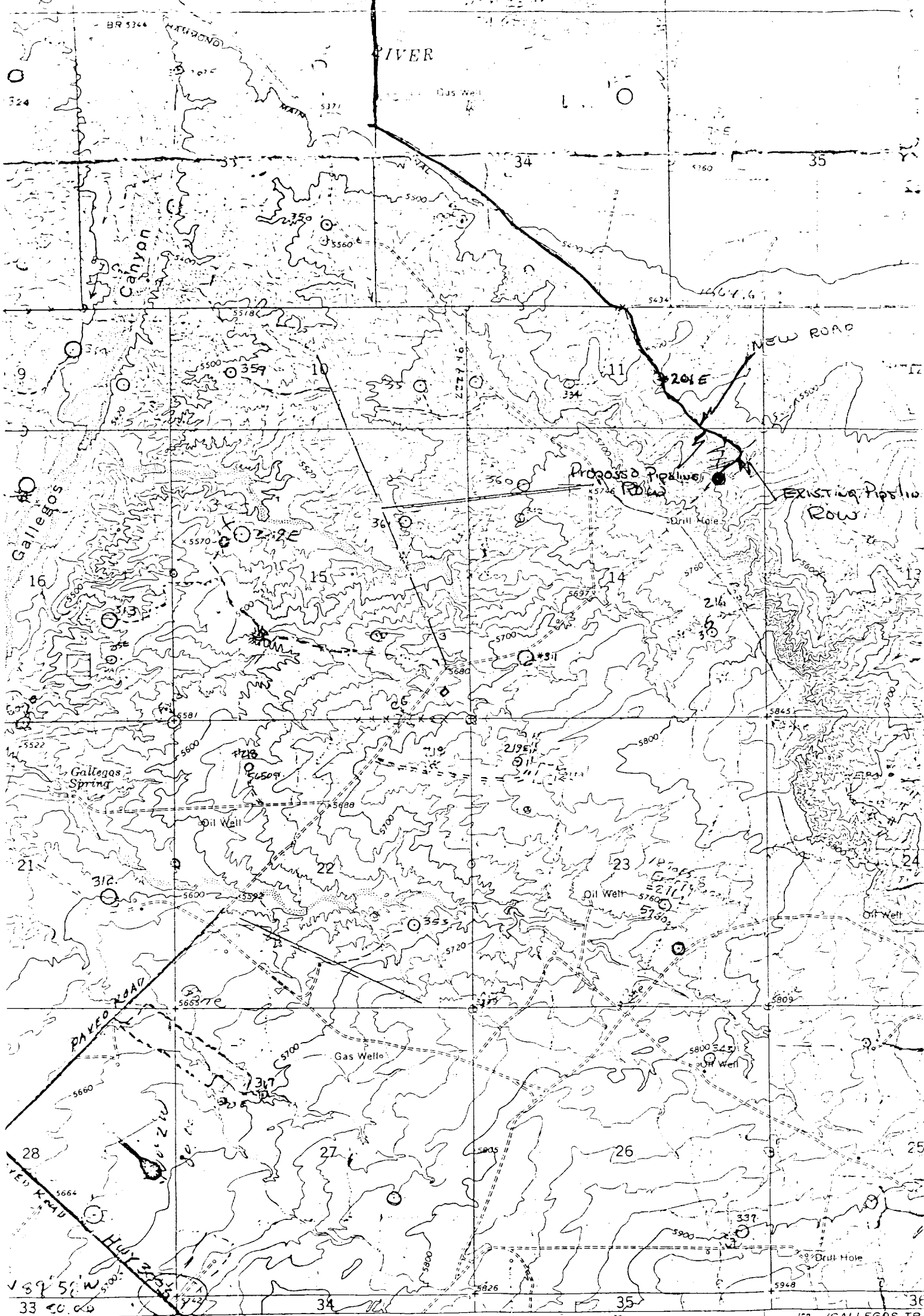
If answer is "no," list the owners and tract descriptions which have actually been consolidated. (Use reverse side of this form if necessary.) _____

No allowable will be assigned to the well until all interests have been consolidated (by communitization, unitization, forced-pooling, or otherwise) or until a non-standard unit, eliminating such interests, has been approved by the Commission.

<p>GAS is dedicated to El Paso Natural Gas Company</p> <p>RECEIVED JUN 14 1985 OIL & GAS DIV. DIST. 3</p> <p>RECEIVED MAY 17 1985</p> <p>BUREAU OF LAND MANAGEMENT FARMINGTON RESOURCE AREA</p>	

Scale: 1"=1000'

<p>CERTIFICATION</p> <p>I hereby certify that the information contained herein is true and complete to the best of my knowledge and belief.</p> <p><i>William J. Fiant</i></p>	
Name	William J. Fiant
Position	Administrator, Field Svcs
Company	Energy Reserves Group, Inc.
Date	5/3/85
<p>I hereby certify that the well location shown on this plat was plotted from field notes of actual surveys made by me or under my supervision, and that the same is true and correct to the best of my knowledge and belief.</p>	
Date Surveyed	April 23, 1985
Registered Professional Engineer and Land Surveyor	<i>Fred B. Kerr Jr.</i> Fred B. Kerr Jr.
Certificate No.	3950



and published by the Geological
 SC&DS, and U. S. Bureau of Reclam
 grammetric methods from aerial
 and by planetable surveys of the
 Field checked by UGGS 19
 American datum
 ordinate system.

Vicinity Map for
 ENERGY RESERVES GROUP #352 GALLEGOS CANYON UNIT
 900'FNL 820'FEL Sec. 14-T28N-R12W
 SAN JUAN COUNTY, NEW MEXICO

SCALE 1
 2000 1 30
 5
 CONTOUR INTER
 DOTTED LINES REFERENCE
 DATUM IS MEA

1.45
 31 MILS
 1.49
 349 MILS