

UNITED STATES  
DEPARTMENT OF THE INTERIOR  
GEOLOGICAL SURVEY

## APPLICATION FOR PERMIT TO DRILL, DEEPEN, OR PLUG BACK

## 1a. TYPE OF WORK

DRILL ☒DEEPEN ☐PLUG BACK ☐

## b. TYPE OF WELL

OIL  
WELL ☐GAS  
WELL ☒

OTHER

SINGLE  
ZONE ☒MULTIPLE  
ZONE ☐

## 2. NAME OF OPERATOR

Energy Reserves Group, Inc.

## 3. ADDRESS OF OPERATOR

P. O. Box 3280, Casper, WY 82602

## 4. LOCATION OF WELL (Report location clearly and in accordance with any State requirements.)

At surface

At proposed prod. zone

1,075' FSL 1,025' FWL

SW/SW

## 14. DISTANCE IN MILES AND DIRECTION FROM NEAREST TOWN OR POST OFFICE\*

Approximately 8.5 miles southeast of Farmington, New Mexico

## 15. DISTANCE FROM PROPOSED\*

LOCATION TO NEAREST  
PROPERTY OR LEASE LINE, FT.  
(Also to nearest drilg. unit line, if any)

1,025'

## 16. NO. OF ACRES IN LEASE

1,801.19

17. NO. OF ACRES ASSIGNED  
TO THIS WELL

(135.93)

## 18. DISTANCE FROM PROPOSED LOCATION\*

TO NEAREST WELL, DRILLING COMPLETED,  
OR APPLIED FOR, ON THIS LEASE, FT.

75'

## 19. PROPOSED DEPTH

1,230'

## 20. ROTARY OR CABLE TOOLS

Rotary

## 21. ELEVATIONS (Show whether DF, RT, GR, etc.)

5,532' GR ungraded

DRILLING OPERATIONS AUTHORIZED ARE  
SUBJECT TO COMPLIANCE WITH ATTACHED

## 22. APPROX. DATE WORK WILL START\*

As soon as approved

## 23.

## PROPOSED CASING AND CEMENTING PROGRAM

SIZE OF HOLE	SIZE OF CASING	WEIGHT PER FOOT	SETTING DEPTH	QUANTITY OF CEMENT
12 1/4"	8 5/8"	24#	130'	100 SX
6 1/4"	4 1/2"	10.5#	1,230'	175 SX

This action is subject to technical and  
procedural review pursuant to 43 CFR 3165.3  
and appeal pursuant to 43 CFR 3165.4.

IN ABOVE SPACE DESCRIBE PROPOSED PROGRAM: If proposal is to deepen or plug back, give data on present productive zone and proposed new productive zone. If proposal is to drill or deepen directionally, give pertinent data on subsurface locations and measured and true vertical depths. Give blowout preventer program, if any.

## 24.

SIGNED

TITLE Administrator, Field Svcs

DATE

5-13-85

(This space for Federal or State office use)

PERMIT NO.

APPROVAL DATE

APPROVED BY

TITLE

CONDITIONS OF APPROVAL, IF ANY:

RECEIVED  
JUN 21 1985  
OIL & GAS DIV  
DST. 3

APPROVED  
AS AMENDED

KATA...  
AREA...

NMOCC

NEW MEXICO OIL CONSERVATION COMMISSION  
WELL LOCATION AND ACREAGE DEDICATION PLAT

Form C-102  
Supersedes C-128  
Effective 1-1-65

All distances must be from the outer boundaries of the Section.

Operator ENERGY RESERVES GROUP			Lease GALLEGOS CANYON UNIT		Well No. 359
Unit Letter M	Section 10	Township 28N	Range 12W	County San Juan	
Actual Footage Location of Well: 1075 feet from the South line and 1025 feet from the West line					
Ground Level Elev. 5532	Producing Formation Fruitland	Pool North Pinion Fruitland	Dedicated Acreage <del>160</del> 135.93 Acres		

1. Outline the acreage dedicated to the subject well by colored pencil or hachure marks on the plat below.
2. If more than one lease is dedicated to the well, outline each and identify the ownership thereof (both as to working interest and royalty).
3. If more than one lease of different ownership is dedicated to the well, have the interests of all owners been consolidated by communitization, unitization, force-pooling, etc?

☐ Yes ☐ No If answer is "yes," type of consolidation \_\_\_\_\_

If answer is "no," list the owners and tract descriptions which have actually been consolidated. (Use reverse side of this form if necessary.) \_\_\_\_\_

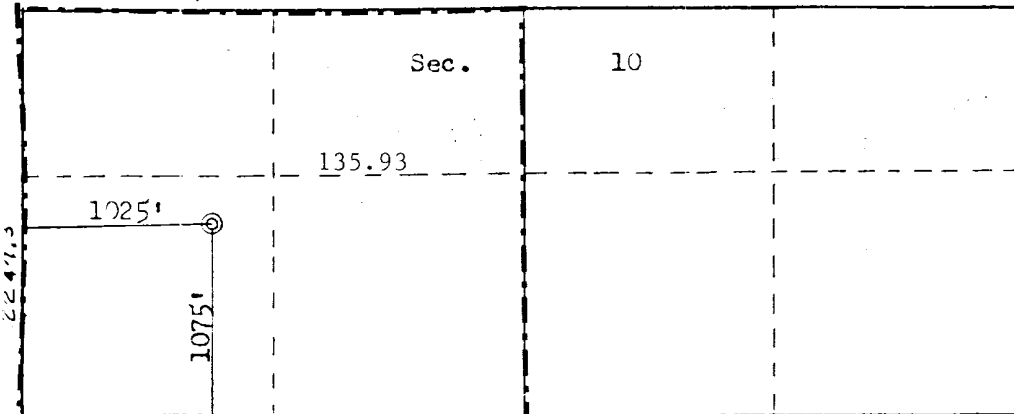
No allowable will be assigned to the well until all interests have been consolidated (by communitization, unitization, forced-pooling, or otherwise) or until a non-standard unit, eliminating such interests, has been approved by the Commission.

GAS is dedicated to El Paso Natural Gas Company

RECEIVED

MAY 17 1985

BUREAU OF LAND MANAGEMENT  
FARMINGTON RESOURCE AREA



Scale: 1"=1000'

CERTIFICATION

I hereby certify that the information contained herein is true and complete to the best of my knowledge and belief.

Name  
William J. Fiant

Position  
Administrator, Field Services

Company  
Energy Reserves Group, Inc.

Date  
5/3/85

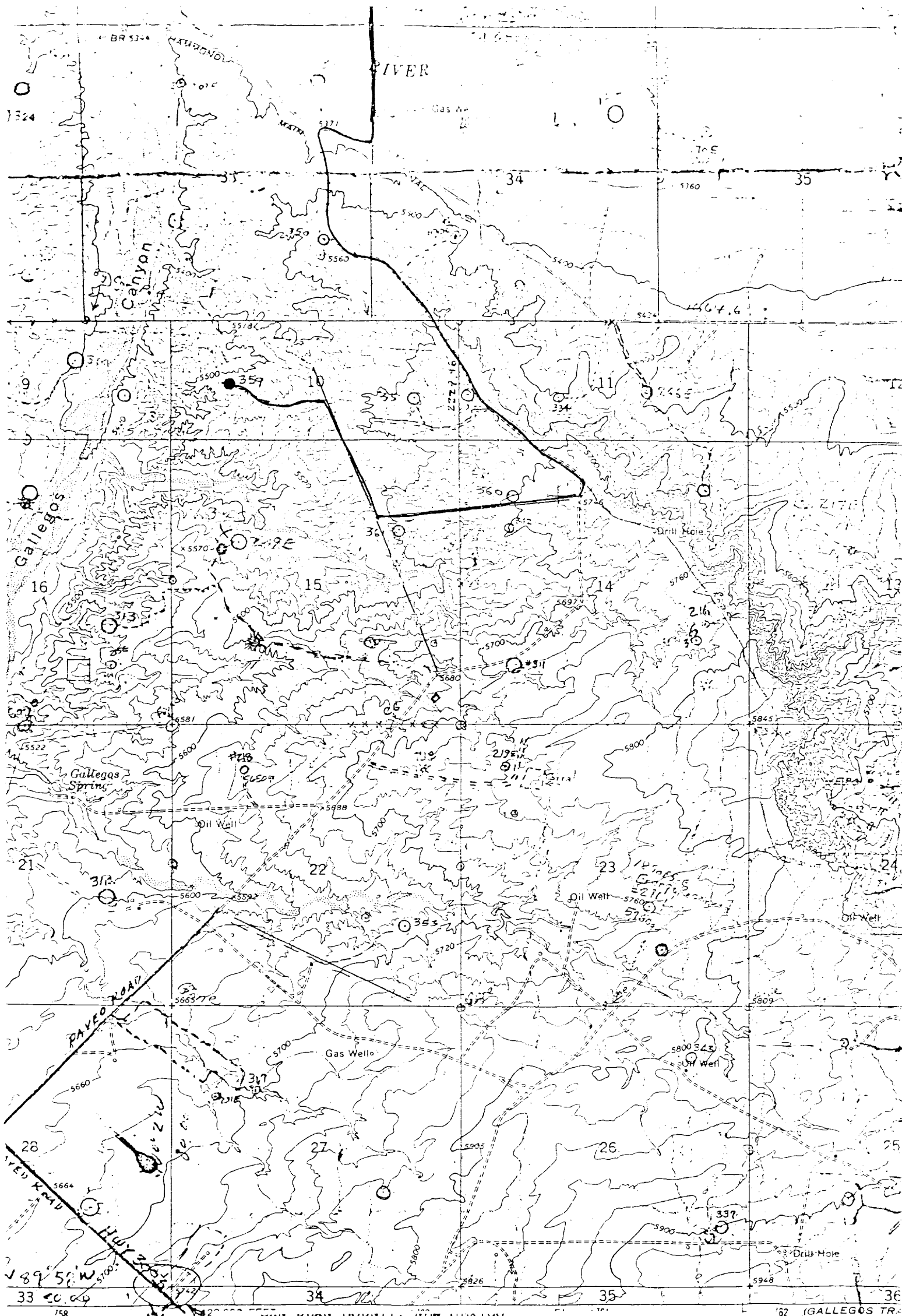
I hereby certify that the well location shown on this plat was plotted from field notes of actual surveys made by me or under my supervision, and that the same is true and correct to the best of my knowledge and belief.

Date Surveyed  
April 23, 1985

Registered Professional Engineer  
and Land Surveyor

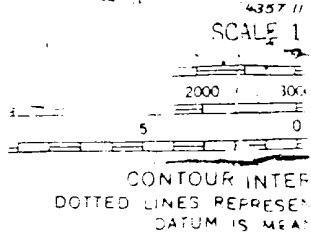
Fred B. Kerr Jr.

Certificate No. 3950



and published by the Geological  
 SC&DS, and U. S. Bureau of Reclam  
 arametric methods from aerial  
 and by plane-table surveys of the  
 Field checked by U.S.G.S 19  
 American datum  
 ordinate system,

Vicinity Map for  
**ENERGY RESERVES GROUP #359 GALLEGOS CANYON UNIT**  
**1075' FSL 1025' FWL Sec. 10-T28N-R12W**  
**SAN JUAN COUNTY, NEW MEXICO**



1:45  
 31 MILES