

UNITED STATES
DEPARTMENT OF THE INTERIOR
BUREAU OF LAND MANAGEMENT

SUBMIT IN TRIPPLICATE

RECEIVED

Form approved.
Budget Bureau No. 1004-0136
Expires August 31, 1985

AUG 17 1992

APPLICATION FOR PERMIT TO DRILL, DEEPEN, OR PLUG BACK

1A. TYPE OF WORK

DRILL ☒

DEEPEN ☐

OIL CON. DIV.
DISP. BACK ☐

1B. TYPE OF WELL

OIL WELL ☐

GAS WELL ☒

OTHER ☐

SINGLE ZONE ☐

MULTIPLE ZONE ☐

2. NAME OF OPERATOR

2217

BHP Petroleum (Americas), Inc.

3. ADDRESS OF OPERATOR

P.O. Box 977 Farmington, New Mexico

4. LOCATION OF WELL (Report location clearly and in accordance with any State requirements.)

At surface

1010' FSL and 995' FNL

At proposed prod. zone

Same

14. DISTANCE IN MILES AND DIRECTION FROM NEAREST TOWN OR POST OFFICE*

6 miles southeast of Farmington, New Mexico

15. DISTANCE FROM PROPOSED* LOCATION TO NEAREST PROPERTY OR LEASE LINE, FT.

(Also to nearest orig. unit line, if any)

325'

16. NO. OF ACRES IN LEASE

1207.18

17. NO. OF ACRES ASSIGNED TO THIS WELL

270.40

18. DISTANCE FROM PROPOSED* LOCATION TO NEAREST WELL, DRILLING, COMPLETION, OR APPLIED FOR, ON THIS LEASE, FT.

679'

19. PROPOSED DEPTH

1525'

20. ROTARY OR CABLE TOOLS

Rotary

21. SURVEYING (Show whether DP, RT, GR, etc.)

5487' GR

22. APPROX. DATE WORK WILL START*

As soon as approved

23. PROPOSED CASING AND CEMENTING PROGRAM

SIZE OF HOLE	SIZE OF CASING	WEIGHT PER FOOT	SETTING DEPTH	
8 3/4"	7"	20# K-55	140'	50 sx (59 cu ft) Circ to surface
6 1/4"	4 1/2"	10.5# K-55	1525'	230 sx (286 cu ft) Circ to surface

Propose to spud in San Jose Formation. Will drill a 8 3/4" hole to a TD of 140'. Run and cement surface casing with cement returns to surface. WOC 12 hours. Test to 2000 psi/30 minutes. Drill a 6 1/4" hole to a TD of 1525' using fresh water mud. No abnormal pressures or poisonous gases are anticipated. Adequate weight material will be on location to control flows from the Farmington sands. Run logs at TD. Run and cement production casing with cement returns to surface. WOC 12 hours. Move out drilling rig and move in completion unit. Pressure test to 2500 psi/30 minutes prior to perforating. Run cased hole correlation logs. Perforate Fruitland Coal and stimulate using a fresh water based gel or foam system.

840' of new, on lease, access road BLM ROW is applied for with this APD. All existing access road BLM ROW has been applied for via Form 299.

Surface ownership is BLM.

24.

SIGNED

JR ED Lowery

TITLE Operations Superintendent

DATE 07/24/92

(This space for Federal or State office use)

PERMIT NO.

APPROVAL DATE

APPROVED BY

TITLE

DATE

CONDITIONS OF APPROVAL, IF ANY:

APPROVED
AS AMENDED

AUG 12 1992

AREA MANAGER

*See Instructions On Reverse Side

Submit to Appropriate
District Office
State Lease - 4 copies
Fee Lease - 3 copies

State of New Mexico
Energy, Minerals and Natural Resources Department

Form C-102
Revised 1-1-89

OIL CONSERVATION DIVISION

P.O. Box 2088
Santa Fe, New Mexico 87504-2088

DISTRICT I
P.O. Box 1980, Hobbs, NM 88240

DISTRICT II
P.O. Drawer DD, Artesia, NM 88210

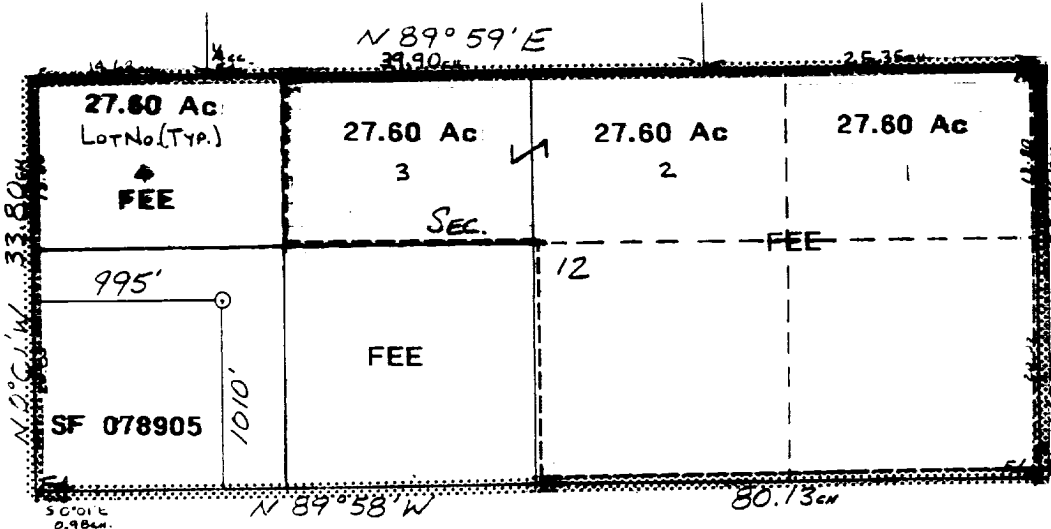
DISTRICT III
1000 Rio Brazos Rd., Aztec, NM 87410

WELL LOCATION AND ACREAGE DEDICATION PLAT

All Distances must be from the outer boundaries of the section

Operator BHP PETROLEUM (AMERICAS) INC.		Lease GALLEGOS CANYON UNIT		Well No. 412
Unit Letter M	Section 12	Township 28 N	Range 12 W	County San Juan
Actual Footage Location of Well: 1010 feet from the South line and 995 feet from the West line				
Ground level Elev. 5487	Producing Formation Fruitland Coal		Pool Basin Fruitland Coal	Dedicated Acreage: 270.40 Acres
<p>1. Outline the acreage dedicated to the subject well by colored pencil or hatchure marks on the plat below.</p> <p>2. If more than one lease is dedicated to the well, outline each and identify the ownership thereof (both as to working interest and royalty).</p> <p>3. If more than one lease of different ownership is dedicated to the well, have the interest of all owners been consolidated by communitization, unitization, force-pooling, etc.? <input checked="" type="checkbox"/> Yes <input type="checkbox"/> No If answer is "yes" type of consolidation Unitization</p> <p>If answer is "no" list the owners and tract descriptions which have actually been consolidated. (Use reverse side of this form if necessary.)</p> <p>No allowable will be assigned to the well until all interests have been consolidated (by communitization, unitization, forced-pooling, or otherwise) or until a non-standard unit, eliminating such interest, has been approved by the Division.</p>				

0 330 660 990 1320 1650 1980 2310 2640 2970 3300 3630 3960 4290 4620 4950 5280 5610 5940 6270 6600



BHP Petroleum (Americas), Inc.
G.C.U. #412
1010' FSL and 995' FWL
Sec. 12, T28N, R12W
San Juan Co., N.M.

