

UNITED STATES  
DEPARTMENT OF THE INTERIOR  
BUREAU OF LAND MANAGEMENT

APPLICATION FOR PERMIT TO DRILL, DEEPEN, OR PLUG BACK

1a. TYPE of WORK

DRILL



DEEPEN



PLUG BACK



b. TYPE of WELL

OIL  
WELL



GAS  
WELL



OTHER

SINGLE  
ZONE



MULTIPLE  
ZONE



2. NAME of OPERATOR

RODDY PRODUCTION COMPANY, INC. 36845

3. ADDRESS of OPERATOR

P.O. Box 2221 Farmington, NM 87499

4. LOCATION of WELL

1765' FNL & -790' FWL

14. DISTANCE IN MILES and DIRECTION from NEAREST TOWN

4.7 miles southwest of Bloomfield, NM

15. DISTANCE from PROPOSED LOCATION to NEAREST  
PROPERTY or LEASE LINE, Ft.

790'

16. NO. of ACRES in LEASE

1518 (e)

17. NO. of ACRES ASSIGNED to WELL

160

18. DISTANCE from PROPOSED LOCATION  
to NEAREST WELL, DRILLING COMPLETED,  
or APPLIED FOR, ON THIS LEASE, Ft.

+/-400'

19. PROPOSED DEPTH

1890'

20. ROTARY or CABLE TOOLS

Rotary

21. ELEVATIONS (Show DF, RT, GR, etc.)

5781' GR

THIS SECTION IS SUBJECT TO TECHNICAL AND  
PROCEDURAL REVIEW PURSUANT TO 43 CFR 3105.3  
AND 3105.4.

22. APPROX. DATE WORK WILL START

October 1994

23. PROPOSED CASING and CEMENTING PROGRAM

| SIZE of HOLE | SIZE of CASING | WEIGHT per FOOT | SETTING DEPTH | GENERAL REQUIREMENTS               |
|--------------|----------------|-----------------|---------------|------------------------------------|
| 8 3/4"       | 7"             | 20# J or K-55   | 200'          | 55 sx (65 cu ft) circ to surface   |
| 6 1/4"       | 4 1/2"         | 10.5# J or K-55 | 1890'         | 210 sx (260 cu ft) circ to surface |

Roddy Production proposes to spud in the Nacimiento Formation. Will drill an 8-3/4" hole to a TD of 200'. Run and cement surface casing with cement returns to surface. WOC 12 hours. Test casing to 600 psi for 30 minutes. Drill a 6-1/4" hole to TD of 1890' using fresh water mud. Run logs at TD. Run and cement production casing with cement returns to surface. WOC 12 hrs. Move out drilling rig and move in completion unit. Pressure test to 2000 psi for 30 minutes prior to perforating. Run cased hole correlation logs. Perforate Pictured Cliffs and stimulate using a fresh water based gel or foam system.

No poisonous gases are anticipated.

Adequate weight material will be on location to control flows from the Farmington sands.

Surface ownership is BLM.

RECEIVED  
AUG 29 1994

RECEIVED  
BLM  
AUG - 9 PM 2:56  
700 FARMINGTON, NM

24.

SIGNED:

*John L. Stahl*

TITLE:

AGENT

01

100

100

100

100

100

100

100

100

DATE:

7/28/94

APPROVED

AS AMENDED

(This space for Federal or State office use)

PERMIT NO.

APPROVAL DATE

AUG 26 1994

APPROVED BY

TITLE

DATE

Signed: STEPHEN

CONDITIONS of APPROVAL, IF ANY:

DISTRICT MANAGER

NMOCD

District I  
PO Box 1980, Hobbs, NM 88241-1980  
District II  
PO Drawer DD, Artesia, NM 88211-0719  
District III  
1000 Rio Brazos Rd., Aztec, NM 87410  
District IV  
PO Box 2088, Santa Fe, NM 87504-2088

State of New Mexico  
Energy, Minerals & Natural Resources Department

OIL CONSERVATION DIVISION  
PO Box 2088  
Santa Fe, NM 87504-2088

Form C-102  
Revised February 21, 1994  
Instructions on back  
Submit to Appropriate District Office  
State Lease - 4 Copies  
Fee Lease - 3 Copies  
☐ AMENDED REPORT

RECEIVED  
BLM  
94 AUG -9 PM 2:56

WELL LOCATION AND ACREAGE DEDICATION PLAT

|                            |  |                    |   |
|----------------------------|--|--------------------|---|
| API Number<br>30-045-29162 |  | Pool Code<br>79680 | Pool Name<br>WEST KUTZ PICTURED CLIFF EXT |
| Property Code<br>13929     | Property Name<br>Lucerne Federal       |                    | Well Number<br>4                          |
| GRID No.<br>36845          | Operator Name<br>RODDY PRODUCTION INC. |                    | Elevation<br>5781'                        |

10 Surface Location

| UL or lot no. | Section | Township | Range | Lot Idn | Feet from the | North/South line | Feet from the | East/West line | County |
|---------------|---------|----------|-------|---------|---------------|------------------|---------------|----------------|--------|
| E             | 21      | 28 N     | 11 W  |         | 1765          | North            | 790           | West           | S.J.   |

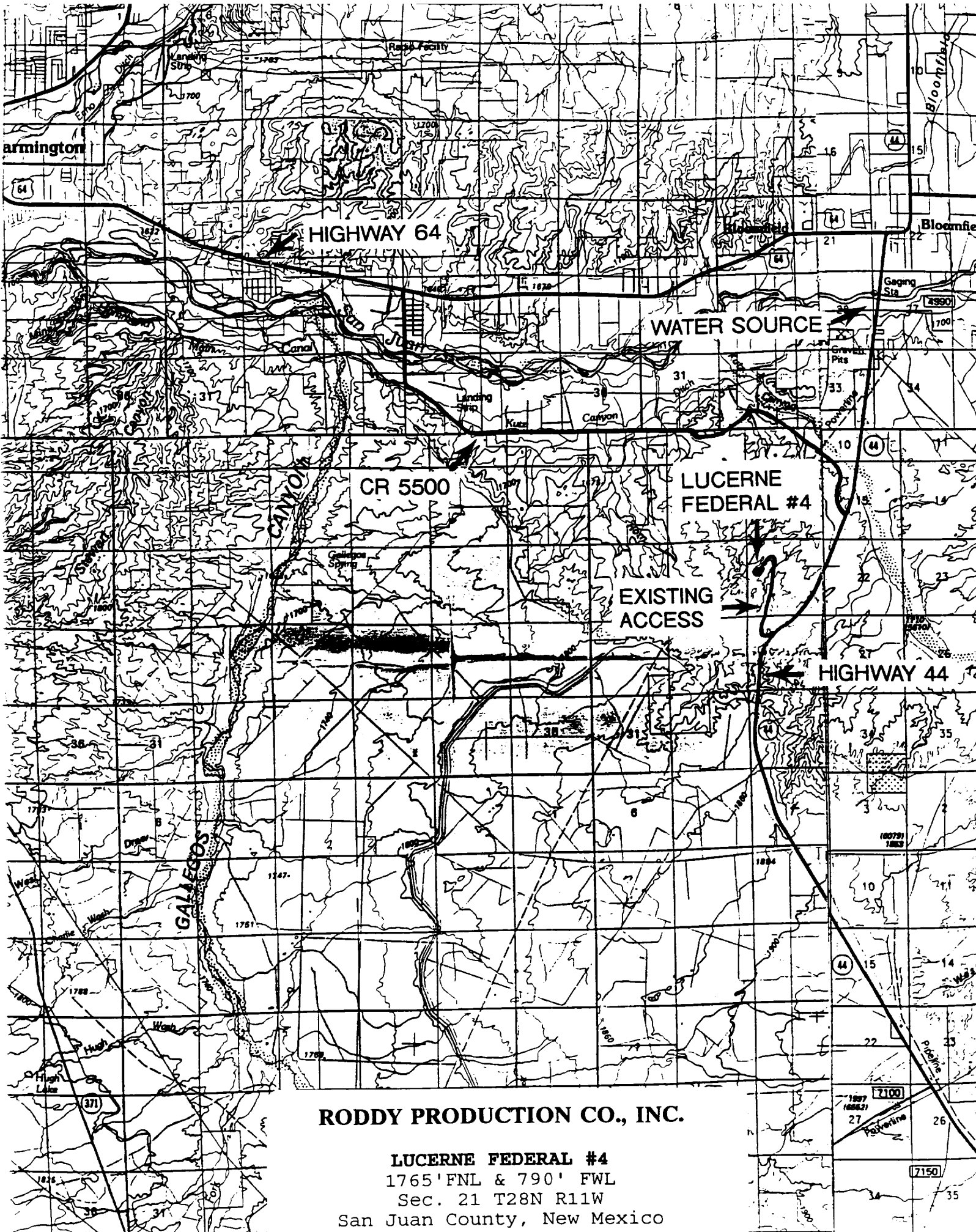
11 Bottom Hole Location If Different From Surface

| UL or lot no. | Section | Township | Range | Lot Idn | Feet from the | North/South line | Feet from the | East/West line | County |
|---------------|---------|----------|-------|---------|---------------|------------------|---------------|----------------|--------|
|               |         |          |       |         |               |                  |               |                |        |

|                           |                         |                       |              |
|---------------------------|-------------------------|-----------------------|--------------|
| 12 Dedicated Acres<br>160 | 13 Joint or Infill<br>N | 14 Consolidation Code | 15 Order No. |
|---------------------------|-------------------------|-----------------------|--------------|

NO ALLOWABLE WILL BE ASSIGNED TO THIS COMPLETION UNTIL ALL INTERESTS HAVE BEEN CONSOLIDATED  
OR A NON-STANDARD UNIT HAS BEEN APPROVED BY THE DIVISION

|  |   |
|--|---|
|  | <p>17 OPERATOR CERTIFICATION</p> <p>I hereby certify that the information contained herein is true and complete to the best of my knowledge and belief</p> <p><i>John D. Steuble</i><br/>Signature<br/>John D. Steuble<br/>Printed Name<br/>Agent<br/>Title<br/>07/28/94<br/>Date</p>   |
|  | <p>18 SURVEYOR CERTIFICATION</p> <p>I hereby certify that the well location shown on this plat was plotted from field notes of actual surveys made by me or under my supervision, and that the same is true and correct to the best of my belief</p> <p>7-5-94<br/>Date of Survey<br/>Signature and Seal of Registered Surveyor:<br/><br/>6857<br/>Certificate Number</p> |



**RODDY PRODUCTION CO., INC.**

**LUCERNE FEDERAL #4**  
1765' FNL & 790' FWL  
Sec. 21 T28N R11W  
San Juan County, New Mexico

LUCERNE FEDERAL #4  
1765' FNL & 790' FWL  
Sec. 21 T28N R11W  
San Juan County, New Mexico

VICINITY MAP

