

UNITED STATES
DEPARTMENT OF THE INTERIOR
BUREAU OF LAND MANAGEMENT

APPLICATION FOR PERMIT TO DRILL OR DEEPEN WELL

1a. TYPE OF WORK

DRILL ☒DEEPEN ☐

b. TYPE OF WELL

OIL
WELL ☐GAS
WELL ☒OTHER ☐SINGLE
ZONE ☒MULTIPLE
ZONE ☐

2. NAME OF OPERATOR

BHP Petroleum (Americas) Inc. 2217

3. ADDRESS AND TELEPHONE NO.

P. O. Box 977, Farmington, New Mexico, 87499, 505 - 327 - 1639

4. LOCATION OF WELL (Report location clearly and in accordance with any State requirements.)*

At surface

1700 ' FSL - 1015 ' FEL

At proposed prod. zone

same

14. DISTANCE IN MILES AND DIRECTION FROM NEAREST TOWN OR POST OFFICE*

5 miles southwest of Bloomfield, New Mexico

15. DISTANCE FROM PROPOSED*

LOCATION TO NEAREST
PROPERTY OR LEASE LINE, FT.
(Also to nearest drig. unit line, if any)

1015'

18. DISTANCE FROM PROPOSED LOCATION*

TO NEAREST WELL, DRILLING, COMPLETED,
OR APPLIED FOR, ON THIS LEASE, FT.

140'

16. NO. OF ACRES IN LEASE

635.84

19. PROPOSED DEPTH

1750'

17. NO. OF ACRES ASSIGNED
TO THIS WELL

160

20. ROTARY OR CABLE TOOLS

Rotary

21. ELEVATIONS (Show whether DF, RT, GR, etc.)

5702' GR

22. APPROX. DATE WORK WILL START*

As soon as approved

This action is subject to technical and
procedural review pursuant to 43 CFR 3165.3

23. and appeal pursuant to 43 CFR 3165.4.

PROPOSED CASING AND CEMENTING PROGRAM

DRILLING OPERATIONS AUTHORIZED ARE
SUBJECT TO COMPLIANCE WITH ATTACHED
"GENERAL REQUIREMENTS"
QUANTITY OF CEMENT

SIZE OF HOLE	GRADE SIZE OF CASING	WEIGHT PER FOOT	SETTING DEPTH	QUANTITY OF CEMENT
8.750 "	7.000 " - K55	20	130'	59 cu. ft.
6.250 "	4.500 " - K55	10.5	1750'	273.2 cu. ft.

BHP Petroleum (Americas) Inc. proposes to spud in the Nacimiento Formation. Will drill an 8 3/4 " hole to 130 feet. Run and cement surface casing with cement returns to surface. WOC 12 hours. Test casing and BOPE to 600 psig for 15 minutes. Drill a 6 1/4 " hole to 1750 feet using a fresh water mud. No abnormal pressure or poisonous gas is anticipated. Adequate weight material will be on location to control any unforeseen flows from the Farmington sands. Run logs at TD. Run and cement production casing with cement returns to surface. WOC 12 hours. Move out drilling rig and move in completion unit. Test production casing to 2500 psig for 15 minutes prior to perforating. Run cased hole correlation logs. Perforate Pictured Cliffs and stimulate using a fresh water base gel or foam system.

Surface ownership is Federal (BLM).

IN ABOVE SPACE DESCRIBE PROPOSED PROGRAM: If proposal is to deepen, give data on present productive zone and proposed new productive zone. If proposal is to drill or deepen directionally, give pertinent data on subsurface locations and measured and true vertical depths. Give blowout preventer program, if any.

24.

SIGNED

TITLE

Operations Superintendent

DATE

11/3/95

(This space for Federal or State office use)

PERMIT NO.

APPROVAL DATE

Application approval does not warrant or certify that the applicant holds legal or equitable title to those rights in the subject lease which would entitle the applicant to sue thereon.

CONDITIONS OF APPROVAL, IF ANY:

APPROVED BY

TITLE

NMOCD

*See Instructions On Reverse Side

DEC 08 1995

DISTRICT MANAGER

District I
PO Box 1980, Hobbs, NM 88241-1980
District II
PO Drawer DD, Artesia, NM 88211-0719
District III
1000 Rio Brazos Rd., Aztec, NM 87410
District IV
PO Box 2088, Santa Fe, NM 87504-2088

State of New Mexico
Energy, Minerals & Natural Resources Department

Form C-102
Revised February 21, 1994
Instructions on back
Submit to Appropriate District Office
State Lease - 4 Copies
Fee Lease - 3 Copies

OIL CONSERVATION DIVISION

PO Box 2088
Santa Fe, NM 87504-2088
RECEIVED
BLM MAIL ROOM
SEP 15 PM 2:13

☐ AMENDED REPORT

WELL LOCATION AND ACREAGE DEDICATION PLAT

1 API Number 90-045-29320		2 Pool Code 79680		3 Pond Name West Kutz Pictured Cliffs	
4 Property Code 2038		5 Property Name GALLEGOS CANYON UNIT			6 Well Number 549
7 OGRID No. 2217		8 Operator Name BHP PETROLEUM (AMERICAS) INC.			9 Elevation 5702

10 Surface Location

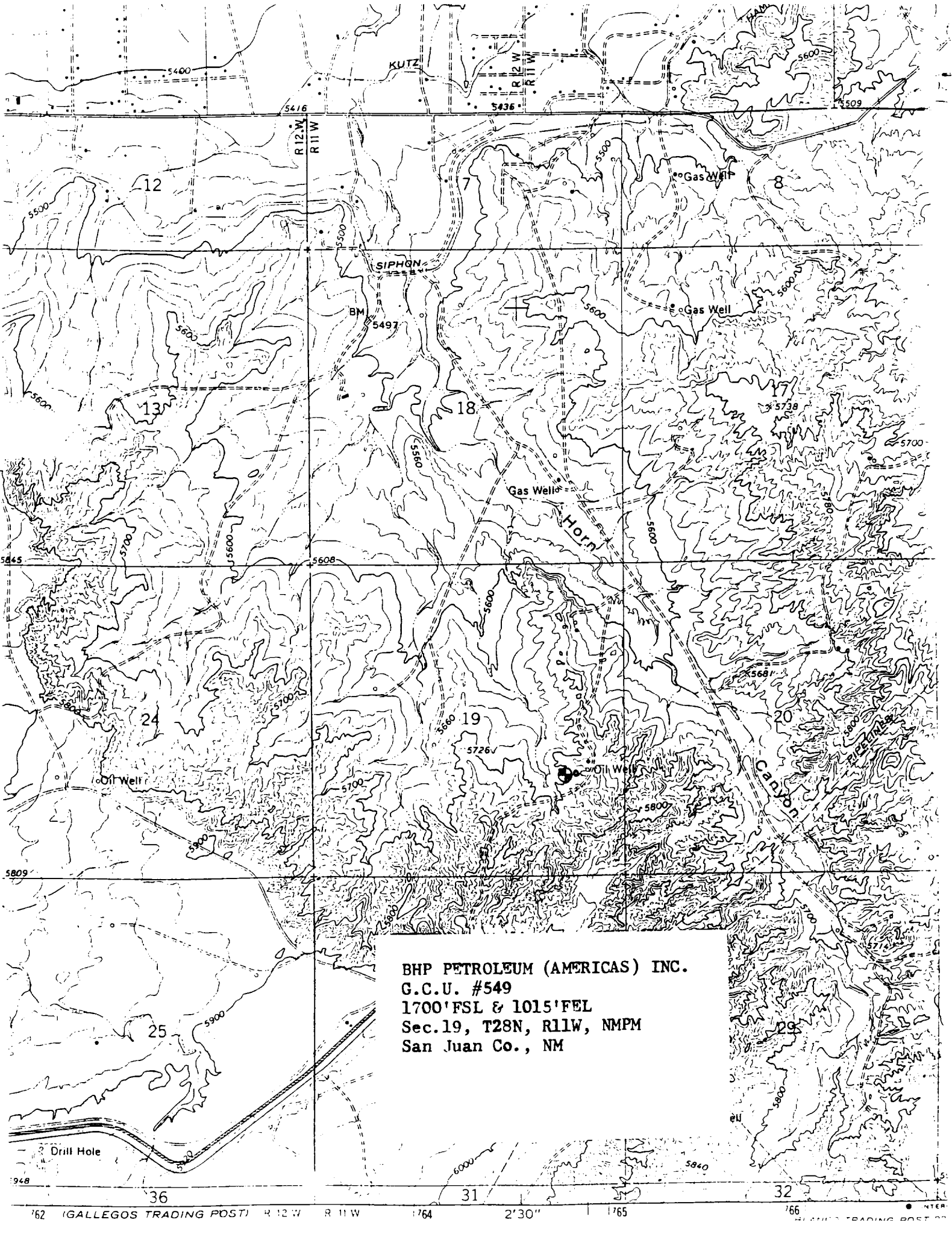
UL or lot no. I	Section 19	Township 28 N	Range 11 W	Lot Idn	Feet from the 1700	North/South line South	Feet from the 1015	East/West line East	County San Juan
--------------------	---------------	------------------	---------------	---------	-----------------------	---------------------------	-----------------------	------------------------	--------------------

11 Bottom Hole Location If Different From Surface

UL or lot no.	Section	Township	Range	Lot Idn	Feet from the	North/South line	Feet from the	East/West line	County
12 Dedicated Acres 160					13 Joint or Infill		14 Consolidation Code U		15 Order No.

NO ALLOWABLE WILL BE ASSIGNED TO THIS COMPLETION UNTIL ALL INTERESTS HAVE BEEN CONSOLIDATED
OR A NON-STANDARD UNIT HAS BEEN APPROVED BY THE DIVISION

16		N 89° 56' E		79.6800		17 OPERATOR CERTIFICATION I hereby certify that the information contained herein is true and complete to the best of my knowledge and belief Signature J. C. Harris Printed Name Operations Superintendent Title 11/3/95 Date	
80.0000		SEC.		19		18 SURVEYOR CERTIFICATION I hereby certify that the well location shown on this plat was plotted from field notes of actual surveys made by me or under my supervision, and that the same is true and correct to the best of my belief. Date of Survey 18 Sep 1995 Signature and Seal of Professional Surveyor #8466 William Thomas Mahanke II Certificate Number 8466	
N 89° 53' E		79.6800		1015'		SF080844A	
N 89° 53' E		79.6800		1700'		NEW MEXICO REGISTERED PROFESSIONAL LAND SURVEYOR	



BHP PETROLEUM (AMERICAS) INC.
G.C.U. #549
1700'FSL & 1015'FEL
Sec.19, T28N, R11W, NMPM
San Juan Co., NM