

5- 10000
1- L.G. Truby
1- Albq. Allen.

NEW MEXICO OIL CONSERVATION COMMISSION
Santa Fe, New Mexico

Form G-101
Revised (12/1/55)

NOTICE OF INTENTION TO DRILL

Notice must be given to the District Office of the Oil Conservation Commission and approval obtained before drilling or recompletion begins. If changes in the proposed plan are considered advisable, a copy of this notice showing such changes will be returned to the sender. Submit this notice in QUINTUPLICATE. One copy will be returned following approval. See additional instructions in Rules and Regulations of the Commission. If State Land submit 6 Copies Attach Form G- 128 in triplicate to first 3 copies of form G-101 on all wells

Farmington, New Mexico
(Place)

September 4, 1956
(Date)

OIL CONSERVATION COMMISSION
SANTA FE, NEW MEXICO

Gentlemen:

You are hereby notified that it is our intention to commence the Drilling of a well to be known as

Pacific Northwest Pipeline Corp.

(Company or Operator)

San Juan 29-5

(Lease)

Well No. 36-33

in 1/4

(Unit)

The well is

located 1800 feet from the South line and 990 feet from the West line of Section 33, T. 29N, R. 2W, NMPM.

(GIVE LOCATION FROM SECTION LINE) Elmore Mesa Verde Pool, Rio Arriba County

If State Land the Oil and Gas Lease is No.

If patented land the owner is Manuel Trujillo

Address Lumberton, New Mexico

We propose to drill well with drilling equipment as follows:

0 to 9917 with rotary tools

The status of plugging bond is

Drilling Contractor Sage Drilling Co.

We intend to complete this well in the Mesa Verde

formation at an approximate depth of 9917 feet.

CASING PROGRAM

We propose to use the following strings of Casing and to cement them as indicated:

Size of Hole	Size of Casing	Weight per Foot	New or Second Hand	Depth	Sacks Cement
15	10 3/4	32.75	New	175	160 45 gal.
9 7/8	7 5/8	26.40	New	3667	150 65, 30 Heet
6 3/4	5 1/2	14	New	9917	150 Heet

If changes in the above plans become advisable we will notify you immediately.

ADDITIONAL INFORMATION Perf. and free the OH, Mes., and Pt L. separately, each with 40,000 gal water with approx. 1/2 qt/gal. Glean out to total depth, and complete well. 1/2 sec. 33, 320 acres dedicated to this well.

Approved: 9-5, 1956
Except as follows:

Sincerely yours,

Pacific Northwest Pipeline Corp.

(Company or Operator)

By Original signed by T. A. Dugan

Position District Engineer

Send Communications regarding well to

Name Pacific Northwest Pipeline Corp.

Address 401 1/2 W. Broadway, Farmington, New Mex.

OIL CONSERVATION COMMISSION

By [Signature]

OIL CONSERVATION COMMISSION		
APPROVED		6
NO. OF OILS		
APPROVED	1	
NO. OF	1	
APPROVED	1	
NO. OF	2	
APPROVED		
NO. OF		
Transporter		
File	1	✓

NEW MEXICO
OIL CONSERVATION COMMISSION

Form C-128

Well Location and/or Gas Proration Plat

Date **September 5, 1956**

Operator **Pacific Northwest Pipeline Corporation** Lease **San Juan 29-5**

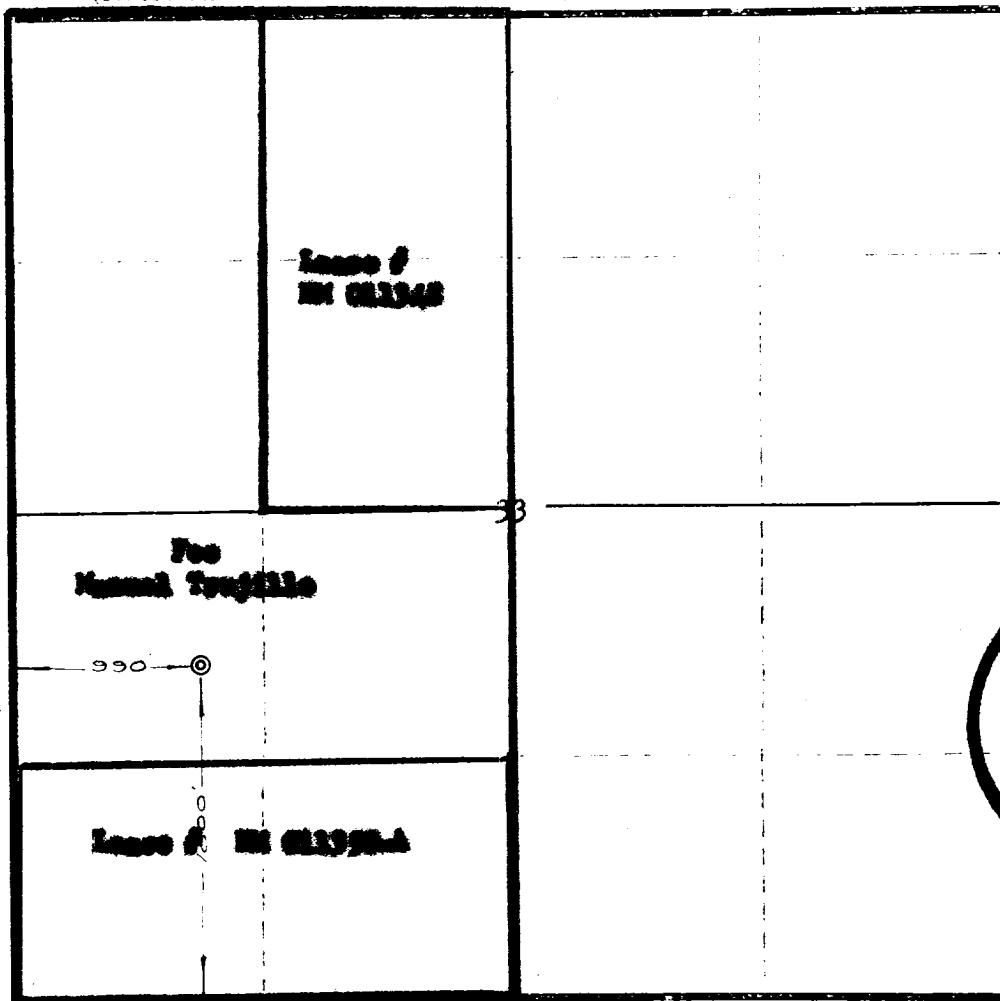
Well No. **34-33** Section **33** Township **29 North** Range **5 West** NMPM

Located **1800** Feet From **South** Line, **990** Feet From **West** Line,

Rio Arriba County, New Mexico. G. L. Elevation **6547**

Name of Producing Formation **Manuel** Pool **Manuel** Dedicated Acreage **3.20**

(Note: All distances must be from outer boundaries of Section)



NOTE
This section of
form is to be
used for gas
wells only.

SCALE: 1" = 1000'

1. Is this Well a Dual Comp. ? Yes ☒ No ☐
2. If the answer to Question 1 is yes, are there any other dually completed wells within the dedicated acreage?
Yes ☐ No ☐

Name **Original signed by T. A. Dugan**
Position **District Engineer**
Representing **Pacific Northwest Pipeline Corp.**
Address **604 N. Broadway, Farmington, New Mexico**

This is to certify that the above plat was prepared from field notes of actual surveys made by me or under my supervision and that the same are true and correct to the best of my knowledge and belief.

Date Surveyed **June 25, 1956**

Ernest V. Echolaw
Ernest V. Echolaw
Reg. Land Surveyor, N. Mex., Reg. No. 1545

OIL CONSERVATION COMMISSION		
AZTEC DISTRICT OFFICE		
No. Copies	3	
Operator		
Santa Fe	/	
Proration		
State Land		
U. S. G. A.	/	
Transporter		
File	/	✓