

UNITED STATES
DEPARTMENT OF THE INTERIOR
BUREAU OF LAND MANAGEMENT

APPLICATION FOR PERMIT TO DRILL, DEEPEN, OR PLUG BACK

1A. TYPE OF WORK
DRILL ☒ DEEPEN ☐ PLUG BACK ☐

B. TYPE OF WELL
OIL WELL ☐ GAS WELL ☒ OTHER ☐ SINGLE ZONE ☒ MULTIPLE ZONE ☐

2. NAME OF OPERATOR
Amoco Production Company

3. ADDRESS OF OPERATOR
501 Airport Drive, Farmington, New Mexico 87401

4. LOCATION OF WELL (Report location clearly and in accordance with any State requirements.)
At surface 880' FNL X 1070' FWL

At proposed prod. zone
Same

14. DISTANCE IN MILES AND DIRECTION FROM NEAREST TOWN OR POST
56 Miles Northeast of Bloomfield, NM

10. DISTANCE FROM PROPOSED*
LOCATION TO NEAREST
PROPERTY OR LEASE LINE, FT.
(Also to nearest drlg. unit line, if any) 880'

18. DISTANCE FROM PROPOSED LOCATION*
TO NEAREST WELL, DRILLING, COMPLETED,
OR APPLIED FOR, ON THIS LEASE, FT. 4700' NE

21. ELEVATIONS (Show whether DF, RT, GR, etc.)
7550' GR

23. PROPOSED CASING AND CEMENTING PROGRAM

SIZE OF HOLE	SIZE OF CASING	WEIGHT PER FOOT	SETTING DEPTH
12 - 1/4"	8 - 5/8"	24#, J-55	300'
8 - 3/4"	5 - 1/2"	15.5#, K-55	8950'

QUANTITY OF CEMENT
354 Cu. Ft. Class B
3220 Cu. Ft. Class B
(This string may be two staged but the cement types and volumes remain the same.)

Amoco proposes to drill the above well to further develop the Basin Dakota reservoir. The well will be drilled to the surface casing point using native mud. The well will then be drilled to TD with a low solids nondispersed mud system. Completion design will be based on open hole logs. Copy of all logs will be filed upon completion. Amoco's standard blowout prevention will be employed; see attached drawing for blowout preventer design. Upon completion the well site will be cleaned and the reserve pit filled and leveled. The gas from this well is dedicated to Northwest Pipeline under contract No. 10839.

IN ABOVE SPACE DESCRIBE PROPOSED PROGRAM: If proposal is to deepen or plug back, give data on present productive zone and proposed new productive zone. If proposal is to drill or deepen directionally, give pertinent data on subsurface locations and measured and true vertical depths. Give blowout preventer program, if any.

24. SIGNED BDS Shaw TITLE Administrative Supervisor
(This space for Federal or State office use)
PERMIT NO. NOV 26 1984 APPROVAL DATE OCT 30 1984
APPROVED BY OIL CON. DIV. DIST. 3 TITLE
CONDITIONS OF APPROVAL, IF ANY: Valid 104 for consultation
*See Instructions On Reverse Side

RECEIVED
NOV 26 1984
OCT 30 1984
FARMINGTON RESOURCE AREA

Form C-107
Revised 10-1-

SANTA FE, NEW MEXICO 87501

Operator AMOCO PRODUCTION COMPANY		Lease ROMERO-FEDERAL		Well No. 1
Unit Letter D	Section 6	Township 29N	Range 4W	County Rio Arriba
Actual Footage Location of Wells: 880 feet from the North line and 1070 feet from the West line				
Ground Level Elev. 7550	Producing Formation Dakota	Pool Basin Dakota		Dedicated Acreage: 320 Acres

- No allowable will be assigned to the well until all interests have been consolidated (by communitization, unitization, forced-pooling, or otherwise) or until a non-standard unit, eliminating such interests, has been approved by the Commission.

1070'

880'

②

Sec.

6

RECEIVED
NOV 26 1984
OIL CON. DIV.
DIST. 3

RECEIVED
SEP 18 1984
BUREAU OF LAND MANAGEMENT
FARMINGTON RESOURCE AREA

Name
B. D. Shaw

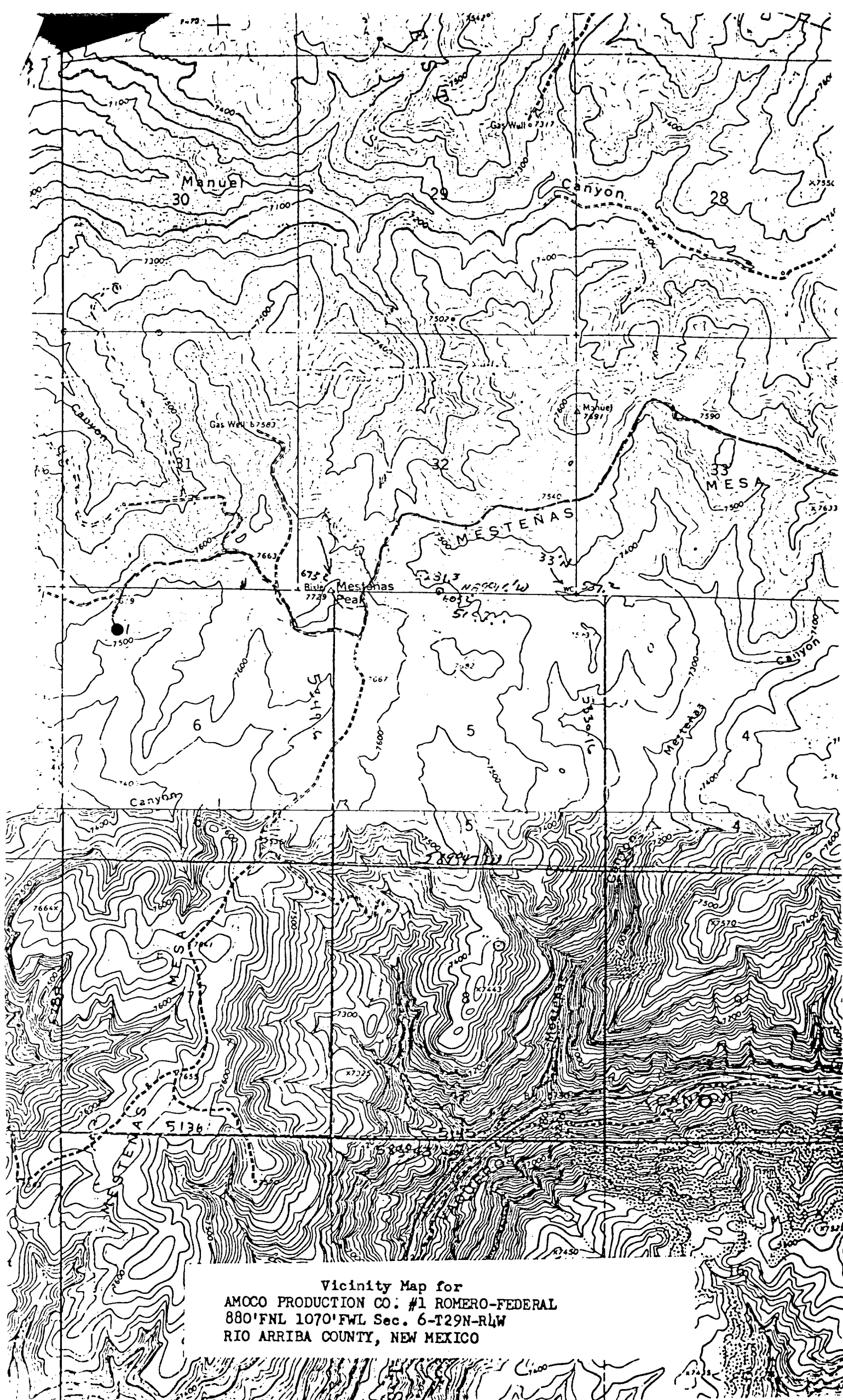
Position
Administrative Supervisor

Company
Amoco Production Co.

Date
9/17-84

I hereby certify that the well location shown on this plat was plotted from field notes of actual surveys made by me or under my supervision, and that the same is true and correct to the best of my knowledge and belief.

Date Surveyed
August 9, 1984
Registered Professional Engineer
and Land Surveyor
Fred B. Kerr Jr.
Fred B. Kerr Jr.
Certificate No. 44



Vicinity Map for
AMOCO PRODUCTION CO. #1 ROMERO-FEDERAL
880'FNL 1070'FWL Sec. 6-T29N-R4W
RIO ARriba COUNTY, NEW MEXICO