

UNITED STATES  
DEPARTMENT OF THE INTERIOR  
BUREAU OF LAND MANAGEMENT

APPLICATION FOR PERMIT TO DRILL, DEEPEN, OR PLUG BACK

5. LEASE DESIGNATION AND SERIAL NO.  
SF-078960 SF-78426

6. IF INDIAN, ALLOTTEE OR TRIBE NAME

7. UNIT AGREEMENT NAME  
San Juan 29-6 Unit

8. FARM OR LEASE NAME  
San Juan 29-6 Unit

9. WELL NO.  
#208

10. FIELD AND POOL, OR WILDCAT  
Basin Fruitland Coal Pool

11. SEC., T., R., M., OR BLK.  
AND SURVEY OR AREA  
Sec. 17N, T29N, R6W

12. COUNTY OR PARISH  
Rio Arriba

13. STATE  
New Mexico

1a. TYPE OF WORK  
DRILL ☒ DEEPEN ☐ PLUG BACK ☐

b. TYPE OF WELL  
OIL WELL ☐ GAS WELL ☒ OTHER ☐ SINGLE ZONE ☐ MULTIPLE ZONE ☐

2. NAME OF OPERATOR  
Northwest Pipeline Corporation

3. ADDRESS OF OPERATOR  
3539 East 30th Street - Farmington, NM 87401

4. LOCATION OF WELL (Report location clearly and in accordance with any State requirements.)  
At surface 1450' FWL & 1230' FSL  
At proposed prod. zone Same

14. DISTANCE IN MILES AND DIRECTION FROM NEAREST TOWN OR POST OFFICE\*  
6 miles to Gobernador

15. DISTANCE FROM PROPOSED\*  
LOCATION TO NEAREST  
PROPERTY OR LEASE LINE, FT.  
(Also to nearest drlg. unit line, if any) 1230'

16. NO. OF ACRES IN LEASE  
1870

17. NO. OF ACRES ASSIGNED  
TO THIS WELL w/320

18. DISTANCE FROM PROPOSED LOCATION\*  
TO NEAREST WELL, DRILLING, COMPLETED,  
OR APPLIED FOR, ON THIS LEASE, FT. + 250'

19. PROPOSED DEPTH  
3560'

20. ROTARY OR CABLE TOOLS  
Rotary

21. ELEVATIONS (Show whether DF, RT, GR, etc.)  
6703' GR This action is subject to technical and  
pre-approval review pursuant to 43 CFR 3165.3  
and appeal pursuant to 43 CFR 3165.4.

22. APPROX. DATE WORK WILL START\*  
11-1-89

SIZE OF HOLE	SIZE OF CASING	WEIGHT PER FOOT	SETTING DEPTH	QUANTITY OF CEMENT
13-1/2"	9-5/8"	36#	400'	330 sx (393 cu.ft.)
8-3/4"	7"	20#	3160'	444 sx (830 cu.ft.)
6-1/4"	5-1/2"	23#	3050'-3560'	

- 1) Plan to drill Fruitland Coal from 3050' to 3560' and set liner in open hole.  
Coal zones will be perforated.
- 2) The west half of Section 17 is dedicated to this well.

RECEIVED  
DEC 18 1989  
OIL CON. DIV.  
DIST. 3

IN ABOVE SPACE DESCRIBE PROPOSED PROGRAM: If proposal is to deepen or plug back, give data on present productive zone and proposed new productive zone. If proposal is to drill or deepen directionally, give pertinent data on subsurface locations and measured and true vertical depths. Give blowout preventer program, if any.

24. SIGNED J.R. Vaughan TITLE Prod. & Drlg. Engineer DATE 11-1-89  
(This space for Federal or State office use)

PERMIT NO. \_\_\_\_\_ APPROVAL DATE \_\_\_\_\_

APPROVED BY \_\_\_\_\_ TITLE \_\_\_\_\_ DATE \_\_\_\_\_  
CONDITIONS OF APPROVAL, IF ANY:

APPROVED  
AS AMENDED

NMOCD

DEC 14 1989  
AREA MANAGER

\*See Instructions On Reverse Side

Submit to Appropriate  
District Office  
State Lease - 4 copies  
Fee Lease - 3 copies

State of New Mexico  
Energy, Minerals and Natural Resources Department

OIL CONSERVATION DIVISION

P.O. Box 2088  
Santa Fe, New Mexico 87504-2088

RECEIVED  
DEC 18 1989

OIL CON. DIV.  
DIST. 3

DISTRICT I  
P.O. Box 1980, Hobbs, NM 88240

DISTRICT II  
P.O. Drawer DD, Artesia, NM 88210

DISTRICT III  
1000 Rio Brazos Rd., Aztec, NM 87410

WELL LOCATION AND ACREAGE DEDICATION PLAT

All Distances must be from the outer boundaries of the section

Operator <b>NORTHWEST PIPELINE</b>			Lease <b>SAN JUAN 29-6</b>		Well No. <b>208</b>
Unit Letter <b>N</b>	Section <b>17</b>	Township <b>29N</b>	Range <b>6W</b>	County <b>RIO ARriba</b> <del>SAN JUAN</del>	
Actual Footage Location of Well:					
1230 feet from the <b>SOUTH</b> line and		1450 feet from the <b>WEST</b> line			
Ground level Elev. <b>6703</b>	Producing Formation <b>Fruitland</b>		Pool <b>Basin Fruitland Coal</b>	Dedicated Acreage: <b>320</b> Acres	

1. Outline the acreage dedicated to the subject well by colored pencil or hachure marks on the plat below.

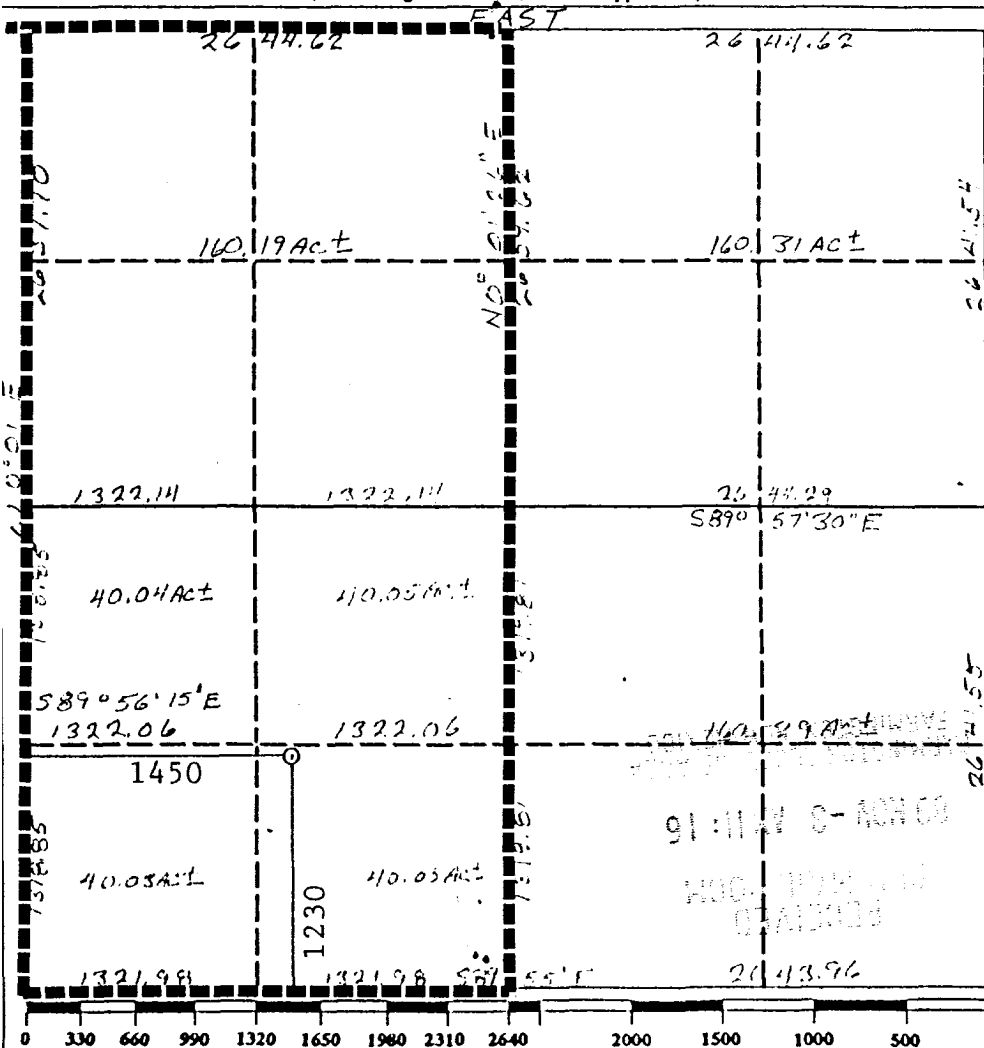
2. If more than one lease is dedicated to the well, outline each and identify the ownership thereof (both as to working interest and royalty).

3. If more than one lease of different ownership is dedicated to the well, have the interest of all owners been consolidated by communitization, unitization, force-pooling, etc.?

☒ Yes ☐ No If answer is "yes" type of consolidation **unitized**

If answer is "no" list the owners and tract descriptions which have actually been consolidated. (Use reverse side of this form if necessary.)

No allowable will be assigned to the well until all interests have been consolidated (by communitization, unitization, forced-pooling, or otherwise) or until a non-standard unit, eliminating such interest, has been approved by the Division.



OPERATOR CERTIFICATION

I hereby certify that the information contained herein is true and complete to the best of my knowledge and belief.

Signature

Printed Name

**Mike Turnbaugh**

Position

**Prod. Supt.**

Company

**Northwest Pipeline Corp.**

Date

**10-30-89**

SURVEYOR CERTIFICATION

I hereby certify that the well location shown on this plat was plotted from field notes of actual surveys made by me or under my supervision, and that the same is true and correct to the best of my knowledge and belief.

**October 27, 1989**

Date Surveyed

**October 27, 1989**

Signature of Surveyor

**Cecil J. Willis**

Professional Surveyor

**9672**

REGISTERED PROFESSIONAL LAND SURVEYOR

**Cecil J. Willis**

Certificate No.

**9672**

