

Submit to Appropriate  
District Office  
State Lease - 6 copies  
Fee Lease - 5 copies

State of New Mexico  
Energy, Minerals and Natural Resources Department

Form C-101  
Revised 1-1-89

OIL CONSERVATION DIVISION

P.O. Box 2088  
Santa Fe, New Mexico 87504-2088

DISTRICT I  
P.O. Box 1980, Hobbs, NM 88240

DISTRICT II  
P.O. Drawer DD, Artesia, NM 88210

DISTRICT III  
1000 Rio Brazos Rd., Aztec, NM 87410

API NO. (assigned by OCD on New Wells)

30-039-24604

5. Indicate Type of Lease

STATE ☐

FEE ☒

6. State Oil & Gas Lease No.

APPLICATION FOR PERMIT TO DRILL, DEEPEN, OR PLUG BACK

1a. Type of Work:

DRILL ☒

RE-ENTER ☐

DEEPEN ☐

PLUG BACK ☐

b. Type of Well:

OIL  
WELL ☐

GAS  
WELL ☒

OTHER

SINGLE  
ZONE ☒

MULTIPLE  
ZONE ☐

7. Lease Name or Unit Agreement Name

San Juan 29-5 Unit

2. Name of Operator

Northwest Pipeline Corporation

8. Well No.

213

3. Address of Operator

3539 East 30th St., Farmington, NM 87401

9. Pool name or Wildcat

Basin Fruitland Coal Gas

4. Well Location

Unit Letter M : 1165 Feet From The South Line and 1145 Feet From The West Line

Section 22

Township 29N

Range 5W

NMPM Rio Arriba

County

10. Proposed Depth

3700' (±)

11. Formation

Fruitland

12. Rotary or C.T.

Rotary

13. Elevations (Show whether DF, RT, GR, etc.)

6693' (GL Unprepared)

14. Kind & Status Plug. Bond

Blanket

15. Drilling Contractor

Advise Later

16. Approx. Date Work will start

Upon Approval

17.

PROPOSED CASING AND CEMENT PROGRAM

W/320

SIZE OF HOLE	SIZE OF CASING	WEIGHT PER FOOT	SETTING DEPTH	SACKS OF CEMENT	EST. TOP
12 1/4"	9-/58"	36# K-55 ST&C	250'	150 Sxs	Circ to Surface
8 1/2"	7"	23# K-55 LT&C	3300'	380 Sxs	Circ to Surface
* 6-1/8"	5 1/2" Liner	15.5# or 23#	3700'		Top of Liner

\*If the coal is cleated a 5 1/2", 23#, P-110 liner will be run in the opened hole without being cemented.

\*If the coal is not cleated a 5 1/2", 15.5#, J-55 liner will be run & cemented w/85 Sxs and the well will be fractured.

APPROVAL EXPIRES 6-16-90  
UNLESS DRILLING IS COMMENCED.  
SPUD NOTICE MUST BE SUBMITTED  
WITHIN 10 DAYS.

RECEIVED  
JAN 16 1990  
OIL CON. DIV.  
DIST. 3

Use mud additives as required for control.

BOP EQUIP: (See attached schematic - Fig. 7-9 or 7-10)

IN ABOVE SPACE DESCRIBE PROPOSED PROGRAM: IF PROPOSAL IS TO DEEPEN OR PLUG BACK, GIVE DATA ON PRESENT PRODUCTIVE ZONE AND PROPOSED NEW PRODUCTIVE ZONE. GIVE BLOWOUT PREVENTER PROGRAM, IF ANY.

I hereby certify that the information above is true and complete to the best of my knowledge and belief.

SIGNATURE Paul C Thompson TITLE Manager, Prod. & Drlg. DATE 1-12-90

TYPE OR PRINT NAME Paul Thompson TELEPHONE NO. 599-3400

(This space for State Use)

(Sanders)

APPROVED BY [Signature] TITLE DISTRICT DATE JAN 16 1990

CONDITIONS OF APPROVAL, IF ANY:

Submit to Appropriate  
District Office  
State Lease - 4 copies  
Fee Lease - 3 copies

State of New Mexico  
Energy, Minerals and Natural Resources Department

Form C-102  
Revised 1-1-89

OIL CONSERVATION DIVISION

P.O. Box 2088  
Santa Fe, New Mexico 87504-2088

DISTRICT I  
P.O. Box 1980, Hobbs, NM 88240

DISTRICT II  
P.O. Drawer DD, Artesia, NM 88210

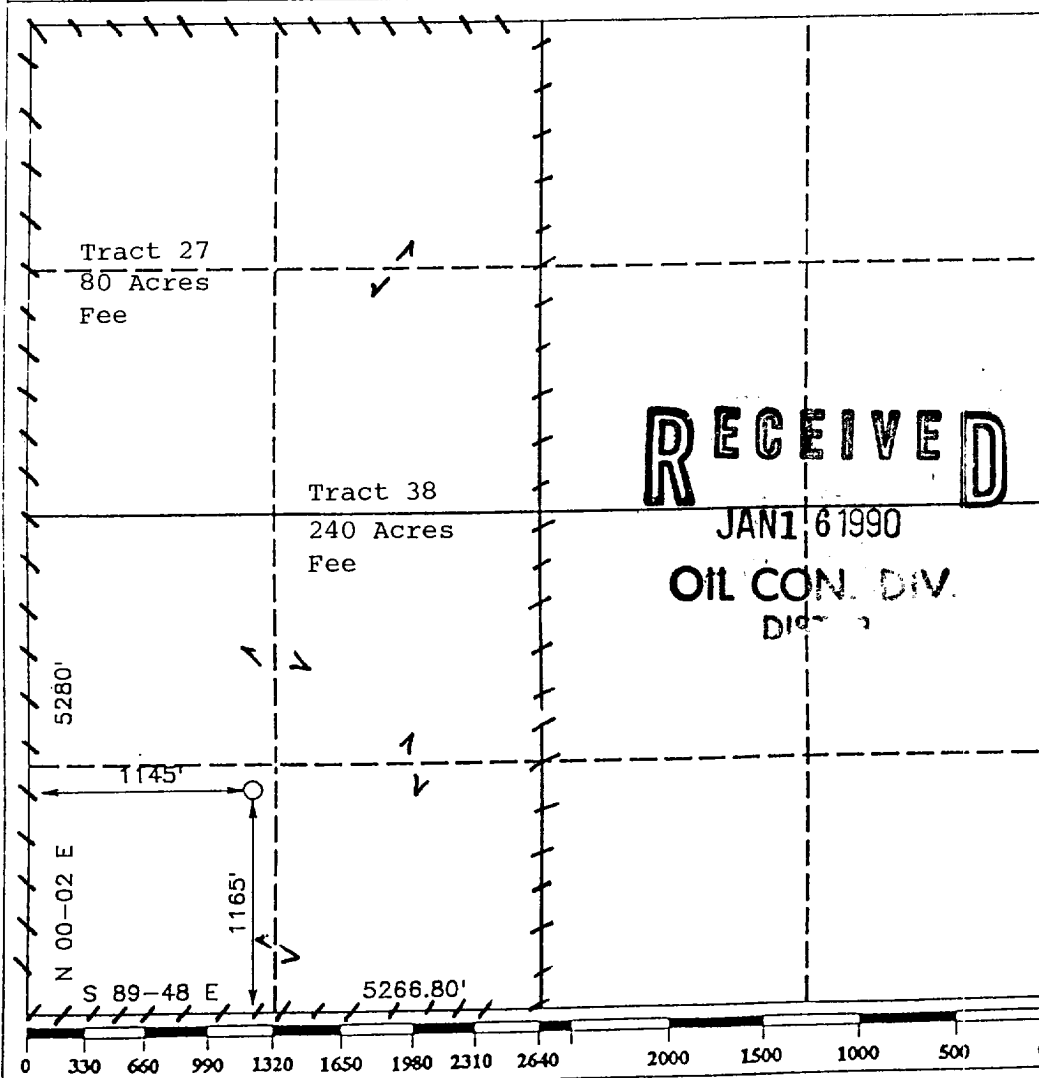
DISTRICT III  
1000 Rio Brazos Rd., Aztec, NM 87410

WELL LOCATION AND ACREAGE DEDICATION PLAT

All Distances must be from the outer boundaries of the section

Operator <b>NORTHWEST PIPELINE CORP.</b>			Lease <b>SAN JUAN 29-5 UNIT</b>		Well No. <b>213</b>
Unit Letter <b>M</b>	Section <b>22</b>	Township <b>T.29 N.</b>	Range <b>R.5 W.</b>	County <b>RIO ARRIBA COUNTY</b>	
Actual Footage Location of Well: <b>1165</b> feet from the <b>SOUTH</b> line and <b>1145</b> feet from the <b>WEST</b> line					
Ground level Elev. <b>6693</b>	Producing Formation <b>Fruitland</b>		Pool <b>Basin Fruitland Coal Gas</b>		Dedicated Acreage: <b>320</b> Acres

1. Outline the acreage dedicated to the subject well by colored pencil or hatchure marks on the plat below.
2. If more than one lease is dedicated to the well, outline each and identify the ownership thereof (both as to working interest and royalty).
3. If more than one lease of different ownership is dedicated to the well, have the interest of all owners been consolidated by communitization, unitization, force-pooling, etc.?  
☒ Yes ☐ No If answer is "yes" type of consolidation Unitization  
If answer is "no" list the owners and tract descriptions which have actually been consolidated. (Use reverse side of this form if necessary.)  
No allowable will be assigned to the well until all interests have been consolidated (by communitization, unitization, forced-pooling, or otherwise) or until a non-standard unit, eliminating such interest, has been approved by the Division.



OPERATOR CERTIFICATION

I hereby certify that the information contained herein is true and complete to the best of my knowledge and belief.

Signature  
*Paul C. Thompson*  
Printed Name  
**Paul Thompson**  
Position  
**Manager Prod. & Drlg.**  
Company  
**Northwest Pipeline Corp.**  
Date  
**1-12-90**

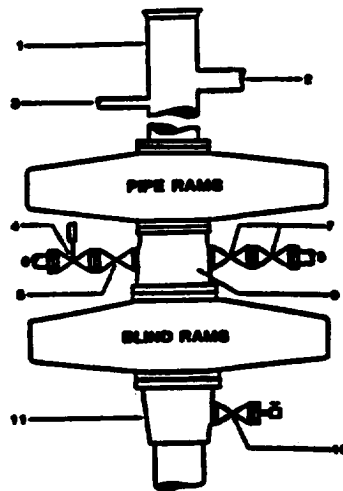
SURVEYOR CERTIFICATION

I hereby certify that the well location shown on this plat was plotted from field notes of actual surveys made by me or under my supervision, and that the same is true and correct to the best of my knowledge and belief.

Date Surveyed  
**DECEMBER 18, 1989**  
Signature & Seal of Professional Surveyor  
*Howard Baggett*  
**HOWARD BAGGETT**  
**REGISTERED PROFESSIONAL LAND SURVEYOR**  
Certificate No. **9879**  
Registered Professional  
Land Surveyor

# FIELD PRACTICES AND STANDARDS

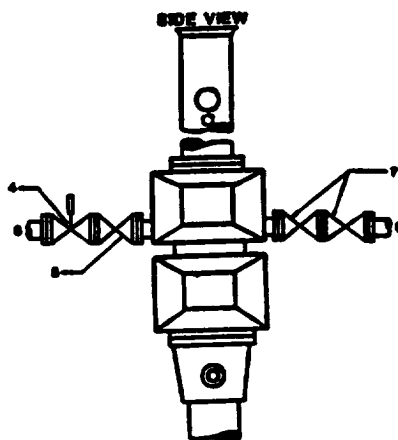
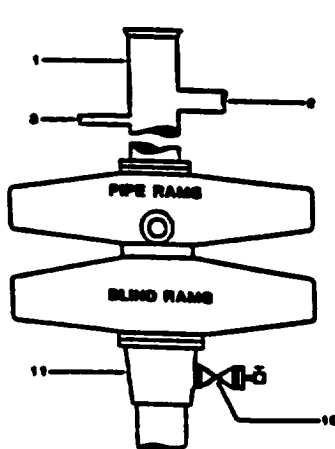
## ALTERNATIVE



1. BELL NIPPLE
2. FLOW LINE
3. FILL-UP LINE
4. 2" FE PRESSURE OPERATED CHOKE LINE VALVE
5. 2" FE GATE VALVE
6. 2" FE CHOKE LINE TO MANIFOLD
7. 2" FE GATE VALVES
8. 2" FE KILL LINE
9. DRILLING SPOOL
10. 2" SE OR FE GATE VALVE WITH NEEDLE VALVE
11. CASING HEAD HOUSING

NOTE: THE DRILLING SPOOL MAY BE LOCATED BELOW BOTH SETS OF RAMS IF A DOUBLE PREVENTER IS USED AND IT DOES NOT HAVE SUITABLE OUTLETS BETWEEN RAMS

Figure 7-9. Standard Hydraulic Blowout Preventer Assembly  
3 M Working Pressure Alternative 1



1. BELL NIPPLE
2. FLOW LINE
3. FILL-UP LINE
4. 2" FE PRESSURE-OPERATED CHOKE LINE VALVE
5. 2" FE GATE VALVE
6. 2" FE CHOKE LINE TO MANIFOLD
7. 2" FE GATE VALVES
8. 2" FE KILL LINE
10. 2" SE OR FE GATE VALVE WITH NEEDLE VALVE
11. CASING HEAD HOUSING

Figure 7-10. Standard Hydraulic Blowout Preventer Assembly  
3 M Working Pressure Alternative 3 (without Drilling Spool)

