

Submit to Appropriate  
District Office  
State Lease - 6 copies  
Fee Lease - 5 copies

State of New Mexico  
Energy, Minerals and Natural Resources Department

Form C-101  
Revised 1-1-89

OIL CONSERVATION DIVISION

P.O. Box 2088  
Santa Fe, New Mexico 87504-2088

DISTRICT I  
P.O. Box 1980, Hobbs, NM 88240

DISTRICT II  
P.O. Drawer DD, Artesia, NM 88210

DISTRICT III  
1000 Rio Brazos Rd., Aztec, NM 87410

API NO. (assigned by OCD on New Wells)

30-039-2470.5

5. Indicate Type of Lease

STATE ☒

FEE ☐

6. State Oil & Gas Lease No.

APPLICATION FOR PERMIT TO DRILL, DEEPEN, OR PLUG BACK

1a. Type of Work:

DRILL ☒

RE-ENTER ☐

DEEPEN ☐

PLUG BACK ☐

b. Type of Well:

OIL  
WELL ☐

GAS  
WELL ☒

OTHER

SINGLE  
ZONE ☒

MULTIPLE  
ZONE ☐

7. Lease Name or Unit Agreement Name

San Juan 29-6 Unit

2. Name of Operator

Phillips Petroleum Company

8. Well No.

239

3. Address of Operator

300 W. Arrington, Suite 200, Farmington, N.M. 87401

9. Pool name or Wildcat

Basin Fruitland Coal Gas

4. Well Location  
Unit Letter

B

: 1203

Feet From The

North

Line and

1553

Feet From The

East

Line

Section

2

Township

29N

Range

6W

NMPM

Rio Arriba

County

10. Proposed Depth

3350' ( $\pm$ )

11. Formation

Fruitland

12. Rotary or C.T.

Rotary

13. Elevations (Show whether DF, RT, GR, etc.)  
6432' (GL Unprepared)

14. Kind & Status Plug Bond  
Blanket

15. Drilling Contractor  
Advise Later

16. Approx. Date Work will start  
Upon Approval

17. PROPOSED CASING AND CEMENT PROGRAM

E/319.23

SIZE OF HOLE	SIZE OF CASING	WEIGHT PER FOOT	SETTING DEPTH	SACKS OF CEMENT	EST. TOP
12-1/4"	9-5/8"	36#, K-55	250'	200 Sxs	Circ to Surface
8-3/4"	7"	23#, K-55	3093'	600 Sxs	Circ to Surface
6-1/8"	5-1/2"	15.5# or 23#	2993-3350'		*

\*If the coal is cleated a 5-1/2", 23#, P-110 liner will be run in the open hole without being cemented.

\*If the coal is not cleated a 5-1/2", 15.5#, K-55 liner will be run, cemented with 100 sxs cement and the well fractured.

APPROVAL EXPIRES 10-18-90  
UNLESS DRILLING IS COMMENCED.  
SPUD NOTICE MUST BE SUBMITTED  
WITHIN 10 DAYS.

Use mud additives as required for control.

BOP Equipment: See attached schematic (Fig. 7-9 or 7-10)

RECEIVED

APR 18 1990

OIL CON. DIV.  
DIST. 3

IN ABOVE SPACE DESCRIBE PROPOSED PROGRAM: IF PROPOSAL IS TO DEEPEN OR PLUG BACK, GIVE DATA ON PRESENT PRODUCTIVE ZONE AND PROPOSED NEW PRODUCTIVE ZONE. GIVE BLOWOUT PREVENTER PROGRAM, IF ANY.

I hereby certify that the information above is true and complete to the best of my knowledge and belief.

SIGNATURE

L. M. Sanders

TITLE Supv. Regulatory Affairs DATE 4-11-90

TYPE OR PRINT NAME

L. M. Sanders

TELEPHONE NO.

(This space for State Use)

APPROVED BY

Ernie Bush

TITLE DEPUTY OIL & GAS INSPECTOR, DIST. 3

DATE

APR 19 1990

CONDITIONS OF APPROVAL, IF ANY:

1. The first part of the document is a list of the names of the persons who have been appointed to the various positions of the Board of Directors of the Corporation. The names are listed in alphabetical order, and each name is followed by the position to which he or she has been appointed.

2. The second part of the document is a list of the names of the persons who have been appointed to the various positions of the Board of Directors of the Corporation. The names are listed in alphabetical order, and each name is followed by the position to which he or she has been appointed.

Submit to Appropriate  
District Office  
State Lease - 4 copies  
Fee Lease - 3 copies

DISTRICT I  
P.O. Box 1980, Hobbs, NM 88240

DISTRICT II  
P.O. Drawer DD, Artesia, NM 88210

DISTRICT III  
1000 Rio Brazos Rd., Aztec, NM 87410

State of New Mexico  
Energy, Minerals and Natural Resources Department

OIL CONSERVATION DIVISION

P.O. Box 2088  
Santa Fe, New Mexico 87504-2088

Form C-102  
Revised 1-1-89

WELL LOCATION AND ACREAGE DEDICATION PLAT

All Distances must be from the outer boundaries of the section

Operator <b>PHILLIPS PETROLEUM</b>		Lease <b>SAN JUAN 29-6 UNIT</b>		Well No. <b>239</b>
Unit Letter <b>B</b>	Section <b>2</b>	Township <b>T.29 N.</b>	Range <b>R.6 W.</b>	County <b>RIO ARriba COUNTY</b>
Actual Footage Location of Well: <b>1203</b> feet from the <b>NORTH</b> line and <b>1553</b> feet from the <b>EAST</b> line				
Ground level Elev. <b>6432</b>	Producing Formation <b>Fruitland</b>		Pool <b>Basin Fruitland Coal Gas</b>	Dedicated Acreage: <b>319.23</b> Acres

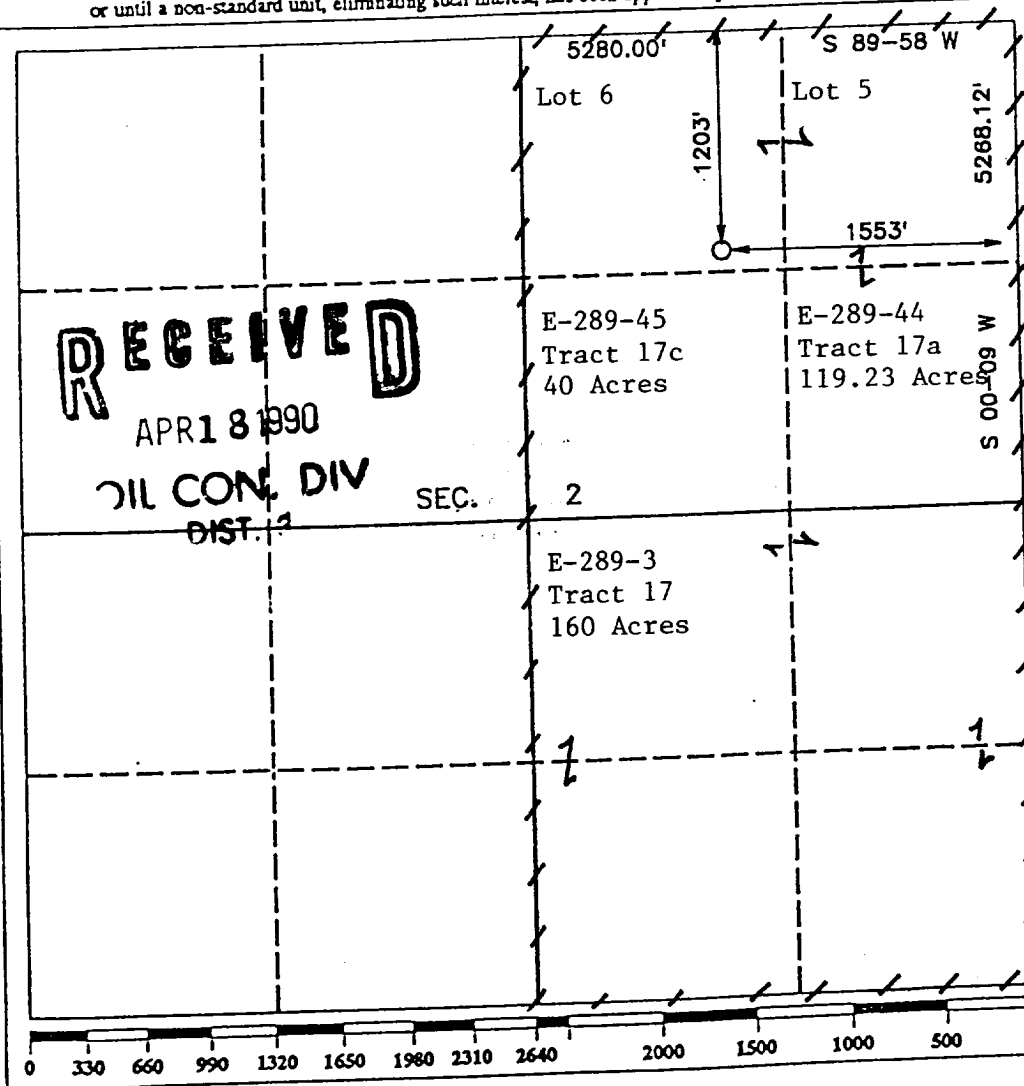
1. Outline the acreage dedicated to the subject well by colored pencil or hatchure marks on the plat below.

2. If more than one lease is dedicated to the well, outline each and identify the ownership thereof (both as to working interest and royalty).

3. If more than one lease of different ownership is dedicated to the well, have the interest of all owners been consolidated by communitization, unitization, force-pooling, etc.?

☒ Yes ☐ No If answer is "yes" type of consolidation Unitization  
If answer is "no" list the owners and tract descriptions which have actually been consolidated. (Use reverse side of this form if necessary).

No allowable will be assigned to the well until all interests have been consolidated (by communitization, unitization, forced-pooling, or otherwise) or until a non-standard unit, eliminating such interest, has been approved by the Division.



OPERATOR CERTIFICATION

I hereby certify that the information contained herein is true and complete to the best of my knowledge and belief.

Signature  
*L. M. Sanders*  
Printed Name  
**L. M. Sanders**  
Position  
**Supv. Regulatory Affairs**  
Company  
**Phillips Petroleum Company**  
Date  
**4-11-90**

SURVEYOR CERTIFICATION

I hereby certify that the well location shown on this plat was plotted from field notes of actual surveys made by me or under my supervision, and that the same is true and correct to the best of my knowledge and belief.

Date Surveyed  
**MARCH 21, 1990**  
Signature & Seal of ME  
Professional Surveyor  
*R. Howard Daggett*  
**R. HOWARD DAGGETT**  
Certificate No.  
**Reg 6678**  
Professional  
Land Surveyor