


UNITED STATES  
DEPARTMENT OF THE INTERIOR  
BUREAU OF LAND MANAGEMENT

APPLICATION FOR PERMIT TO DRILL, DEEPEN, OR PLUG BACK

1a. Type of Work DRILL	5. Lease Number SF-078425 Unit Reporting Number
1b. Type of Well GAS	6. If Indian, All. or Tribe
2. Operator MERIDIAN OIL 14538	7. Unit Agreement Name San Juan 29-7 Unit
3. Address & Phone No. of Operator PO Box 4289, Farmington, NM 87499  (505) 326-9700	8. Farm or Lease Name 7465 San Juan 29-7 Unit 9. Well Number 151
4. Location of Well 2005' FNL, 1030' FEL  Latitude 36° 41' 05", Longitude 107° 32' 03"	10. Field, Pool, Wildcat SOUTH Blanco Pic.Cliffs EXT 12439 11. Sec., Twn, Rge, Mer. (NMPM) H Sec 35, T-29-N, R-7-W API# 30-039-25540
14. Distance in Miles from Nearest Town 6 miles to Navajo City	12. County Rio Arriba
15. Distance from Proposed Location to Nearest Property or Lease Line 1030'	13. State NM
16. Acres in Lease	17. Acres Assigned to Well 160 NE/4
18. Distance from Proposed Location to Nearest Well, Drlg, Compl, or Applied for on this Lease 115'	20. Rotary or Cable Tools Rotary
19. Proposed Depth 3770'	22. Approx. Date Work will Start 3rd quarter 1995
21. Elevations (DF, FT, GR, Etc.) 6816' GR	
23. Proposed Casing and Cementing Program See Operations Plan attached	
24. Authorized by:  Regional Drilling Engineer	Date 6-3-95

**RECEIVED**  
AUG 28 1995

**OIL CON. DIV.**  
DIST. 3

PERMIT NO. \_\_\_\_\_ APPROVAL DATE \_\_\_\_\_  
APPROVED BY \_\_\_\_\_ TITLE \_\_\_\_\_ DATE \_\_\_\_\_

**APPROVED  
AS AMENDED**

Archaeological Report submitted by Arboles Contract Archaeology Tech. Report #355 dated 10-29-93  
Threatened and Endangered Species Report submitted by Ecosystem dated 03-29-94  
NOTE: This format is issued in lieu of U.S. BLM Form 3160-3

AUG 28 1995

**RECEIVED**  
SEP - 7 1995

DISTRICT MANAGER

*Hold C-104 for NSL*  
*(2)*

OIL CON. DIV.

District I  
 PO Box 1980, Hobbs, NM 88241-1980  
 District II  
 PO Drawer DD, Ardena, NM 88211-0719  
 District III  
 1000 Rio Brazos Rd., Aztec, NM 87410  
 District IV  
 PO Box 2088, Santa Fe, NM 87504-2088

State of New Mexico  
 Energy, Minerals & Natural Resources Department

OIL CONSERVATION DIVISION  
 PO Box 2088  
 Santa Fe, NM 87504-2088

Form C-1  
 Revised February 21, 19  
 Instructions on ba  
 Submit to Appropriate District Offi  
 State Lease - 4 Copi  
 Fee Lease - 3 Copi

AMENDED REPORT

WELL LOCATION AND ACREAGE DEDICATION PLAT

1 API Number 30-039- 95546		2 Pool Code 72439		3 Pool Name South Blanco Pictured Cliffs Ext.	
4 Property Code 7465		5 Property Name San Juan 29-7 Unit			6 Well Number 151
7 OGRID No. 14538		8 Operator Name Meridian Oil Inc.			9 Elevation 6816'

10 Surface Location

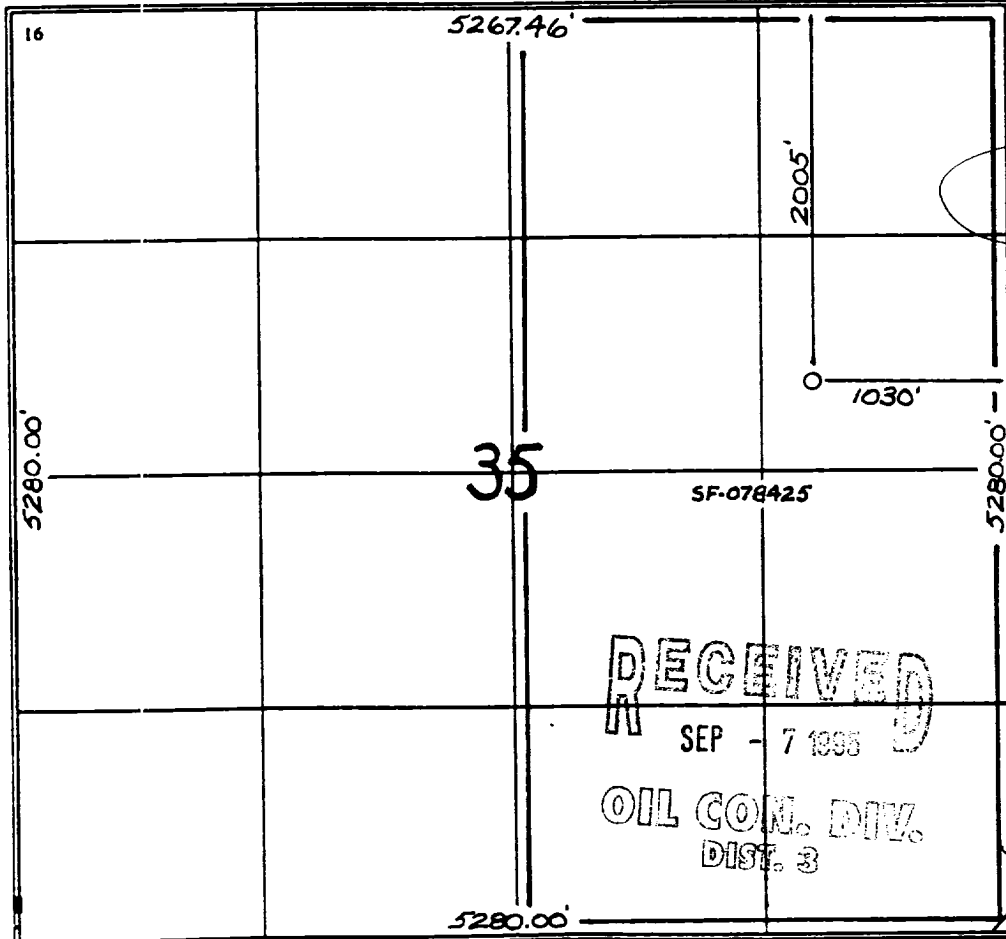
UL or lot no.	Section	Township	Range	Lot Idn	Feet from the	North/South line	Feet from the	East/West line	County
H	35	29 N	7 W		2005	North	1030	East	R.A.

11 Bottom Hole Location If Different From Surface

UL or lot no.	Section	Township	Range	Lot Idn	Feet from the	North/South line	Feet from the	East/West line	County

12 Dedicated Acres 160	13 Joint or Infill	14 Consolidation Code	15 Order No.
---------------------------	--------------------	-----------------------	--------------

NO ALLOWABLE WILL BE ASSIGNED TO THIS COMPLETION UNTIL ALL INTERESTS HAVE BEEN CONSOLIDATED OR A NON-STANDARD UNIT HAS BEEN APPROVED BY THE DIVISION



17 OPERATOR CERTIFICATION  
 I hereby certify that the information contained herein is true and complete to the best of my knowledge and belief.

*Peggy Bradford*  
 Signature  
 Peggy Bradford  
 Printed Name  
 Regulatory Administrator  
 Title  
 9-6-95  
 Date

18 SURVEYOR CERTIFICATION  
 I hereby certify that the well location shown on this plat was plotted from field notes of actual surveys made by me or under my supervision, and that the same is true and correct to the best of my belief.

9-17-93  
 Date of Survey  
 Signature and Title of Professional Surveyor:  
 NEALE C. EDWARDS  
 8857  
 8857  
 Certificate Number

RECEIVED  
 SEP - 7 1995  
 OIL CON. DIV.  
 DIST. 3

OPERATIONS PLAN

**Well Name:** San Juan 29-7 Unit #151  
**Location:** 2005'FNL, 1030'FEL Section 35, T-29-N, R-07-W  
 Rio Arriba County, New Mexico  
 Latitude 36° 41' 05", Longitude 107° 32' 03"  
**Formation:** Blanco Pictured Cliffs  
**Elevation:** 6816'GL

<b>Formation:</b>	<b>Top</b>	<b>Bottom</b>	<b>Contents</b>
Surface	San Jose	2700'	
Ojo Alamo	2700'	2845'	aquifer
Kirtland	2845'	3385'	
Fruitland	3385'	3620'	
Fruitland Coal Top	3388'	3618'	gas
Pictured Cliffs	3620'	3762'	gas
Lewis	3762'	3770'	
Total Depth	3770'		

**Logging Program:** Mud logs from 2700' to Total Depth.  
 IND, Dens, Neut, GR, ML to TD.

**Mud Program:**

<u>Interval</u>	<u>Type</u>	<u>Weight</u>	<u>Vis.</u>	<u>Fluid Loss</u>
0- 200'	Spud	8.4-8.9	40-50	no control
200-3770'	Non-dispersed	8.4-9.5	30-60	no control

**Casing Program:**

<u>Hole Size</u>	<u>Depth Interval</u>	<u>Csg.Size</u>	<u>Wt.</u>	<u>Grade</u>
12 1/4"	0 - 200'	8 5/8"	24.0#	K-40
7 7/8"	0 - 3770'	4 1/2"	10.5#	K-55

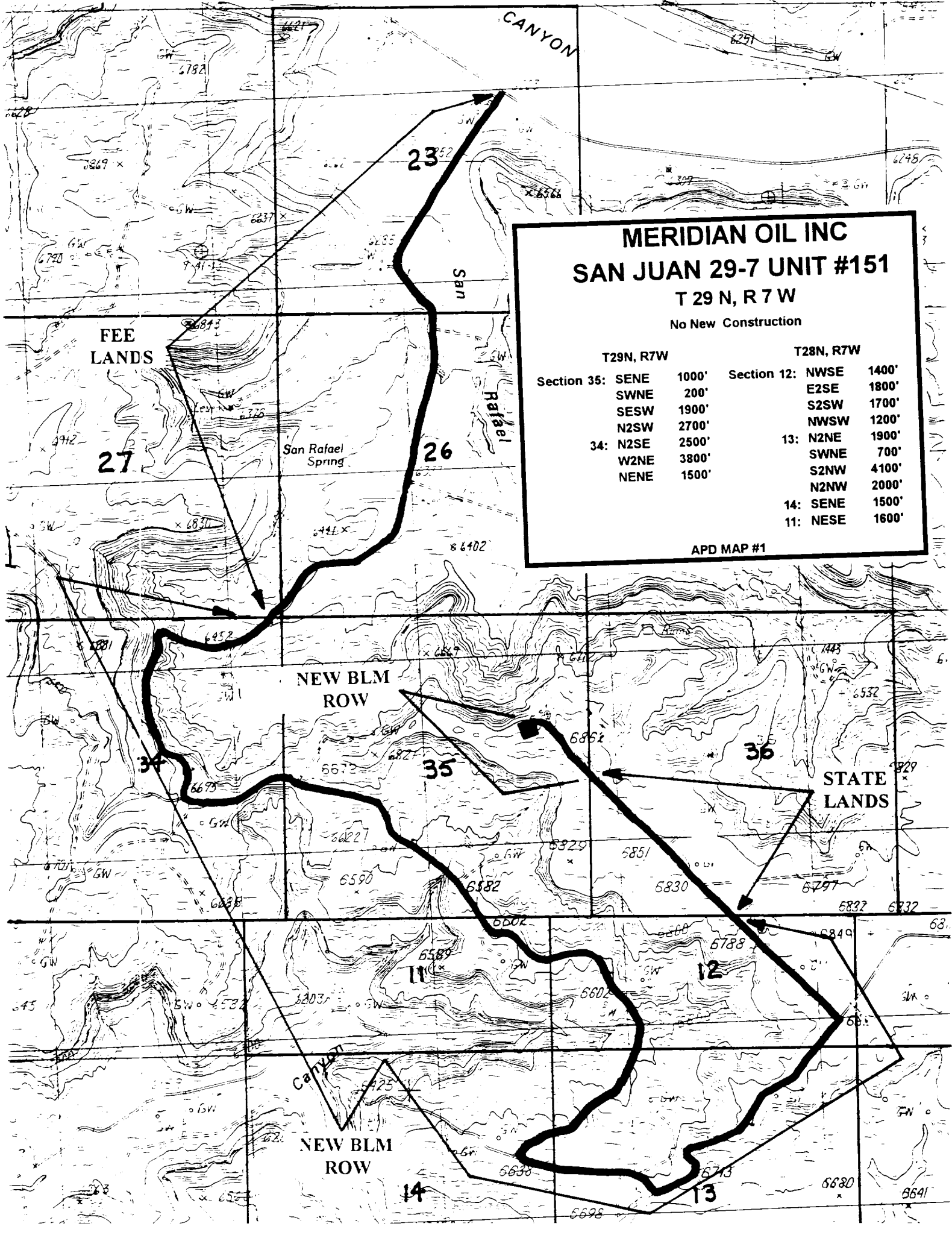
**Tubing Program:**

0 - 3770'	2 3/8"	4.7#	J-55
-----------	--------	------	------

**Float Equipment:** 8 5/8" surface casing - saw tooth guide shoe.  
 Centralizers will be run in accordance with Onshore Order #2.

4 1/2" production casing - float shoe on bottom. Three centralizers run every other joint above shoe. Four centralizers run every 3rd joint to the base of the Ojo Alamo @ 2845'. Two turbolizing type centralizers - one below and one into the base of the Ojo Alamo @ 2845'. Standard centralizers thereafter every fourth joint up to the base of the surface pipe.

**Wellhead Equipment:** 8 5/8" x 4 1/2" x 2 3/8" x 11" 2000 psi xmas tree assembly.



**MERIDIAN OIL INC**  
**SAN JUAN 29-7 UNIT #151**  
 T 29 N, R 7 W  
 No New Construction

T29N, R7W		T28N, R7W	
Section 35: SENE	1000'	Section 12: NWSE	1400'
SWNE	200'	E2SE	1800'
SESW	1900'	S2SW	1700'
N2SW	2700'	NWSW	1200'
34: N2SE	2500'	13: N2NE	1900'
W2NE	3800'	SWNE	700'
NENE	1500'	S2NW	4100'
		N2NW	2000'
		14: SENE	1500'
		11: NESE	1600'

APD MAP #1

FEE LANDS

27

San Rafael Spring

26

NEW BLM ROW

34

35

36

STATE LANDS

NEW BLM ROW

14

13

