

UNITED STATES
DEPARTMENT OF THE INTERIOR
GEOLOGICAL SURVEY

30-045-21205

APPLICATION FOR PERMIT TO DRILL, DEEPEN, OR PLUG BACK

1a. TYPE OF WORK
 DRILL DEEPEN PLUG BACK

b. TYPE OF WELL
 OIL WELL GAS WELL OTHER
 SINGLE ZONE MULTIPLE ZONE

2. NAME OF OPERATOR
 Tenneco Oil Company

3. ADDRESS OF OPERATOR
 Suite 1200 Lincoln Tower Bldg. Denver, Colorado

4. LOCATION OF WELL (Report location clearly and in accordance with any State requirements.*)
 At surface 1190' F/NL and 1190' F/EL
 At proposed prod. zone

14. DISTANCE IN MILES AND DIRECTION FROM NEAREST TOWN OR POST OFFICE*

15. DISTANCE FROM PROPOSED* LOCATION TO NEAREST PROPERTY OR LEASE LINE, FT. (Also to nearest drlg. unit line, if any)

16. NO. OF ACRES IN LEASE

17. NO. OF ACRES ASSIGNED TO THIS WELL
 320

18. DISTANCE FROM PROPOSED LOCATION* TO NEAREST WELL, DRILLING, COMPLETED, OR APPLIED FOR, ON THIS LEASE, FT.

19. PROPOSED DEPTH
 8110

20. ROTARY OR CABLE TOOLS
 Rotary

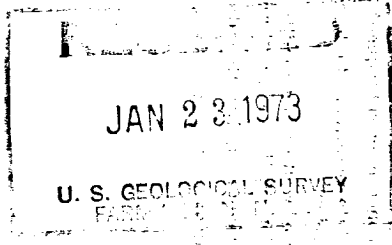
21. ELEVATIONS (Show whether DF, RT, GR, etc.)
 6957.0 GR

22. APPROX. DATE WORK WILL START*
 Upon Approval

23. PROPOSED CASING AND CEMENTING PROGRAM

SIZE OF HOLE	SIZE OF CASING	WEIGHT PER FOOT	SETTING DEPTH	QUANTITY OF CEMENT
12-1/4	8-5/8	24	150	Sufficient to circulate as directed by U.S.G.S.
7-7/8	4-1/2	10.5	8110	

Well to be drilled to approximate T.D. of 8110', log and if commercial production is indicated, run 4-1/2" casing to T.D. Cement as directed by U.S.G.S. Perforate casing and treat formation as necessary to establish commercial production. B.O.P. to be tested each 24 hours.



IN ABOVE SPACE DESCRIBE PROPOSED PROGRAM: If proposal is to deepen or plug back, give data on present productive zone and proposed new productive zone. If proposal is to drill or deepen directionally, give pertinent data on subsurface locations and measured and true vertical depths. Give blowout preventer program, if any.

24. SIGNED W L Shaver TITLE Sr. Production Clerk DATE 1/18/73

(This space for Federal or State office use)

PERMIT NO. _____ APPROVAL DATE _____

APPROVED BY ia TITLE _____ DATE _____

CONDITIONS OF APPROVAL, IF ANY:

**NEW MEXICO OIL CONSERVATION COMMISSION
WELL LOCATION AND ACERAGE DEDICATION PLAT**

All distances must be from the outer boundaries of the Section

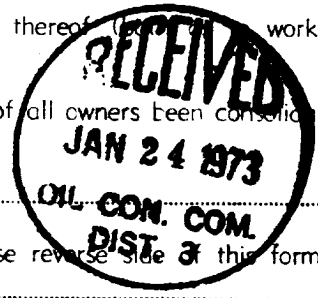
Operator TENNECO OIL COMPANY		Lease DANA			Well No 7	
Unit Letter A	Section 24	Township 29 NORTH	Range 8 WEST	County SAN JUAN		
Actual Footage Location of Well: 1190 feet from the NORTH line and 1190 feet from the EAST line						
Ground Level Elev. 6957.0	Producing Formation Dakota		Pool Basin Dakota	Dedicated Acreage 320		Acres

1. Outline the acreage dedicated to the subject well by colored pencil or hachure marks on the plat below.
2. If more than one lease is dedicated to the well, outline each and identify the ownership thereof (working interest and royalty).
3. If more than one lease of different ownership is dedicated to the well, have the interests of all owners been consolidated by communitization, unitization, force-pooling, etc?

Yes No If answer is "yes," type of consolidation

If answer is "no," list the owners and tract descriptions which have actually consolidated. (Use reverse side of this form if necessary.)

No allowable will be assigned to the well until all interests have been consolidated (by communitization, unitization, forced-pooling, or otherwise) or until a non standard unit, eliminating such interests, has been approved by the Commission.



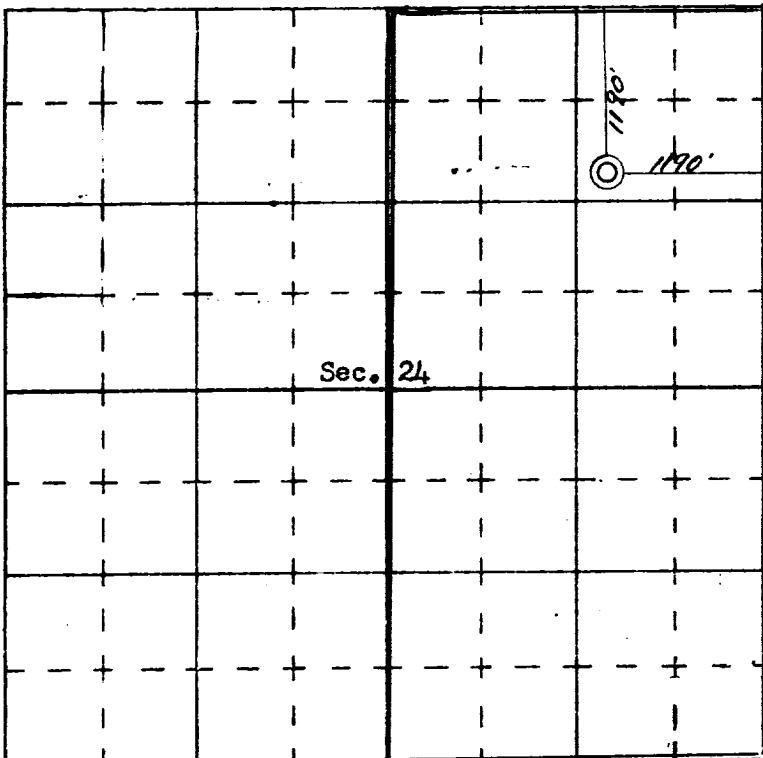
CERTIFICATION

I hereby certify that the information contained herein is true and complete to the best of my knowledge and belief.

W L Shaver
 Name
W. L. Shaver
 Position
Sr. Production Clerk
 Company
Tenneco Oil Company
 Date
1/18/73

I hereby certify that the well location shown on this plat was plotted from field notes of actual surveys made by me or under my supervision, and that the same is true and correct to the best of my knowledge and belief.

18 December, 1972
 Date Signed
P. Leese
 Registered Professional Engineer
 and/or Land Surveyor
P. LEESE
1973
 Certificate No. **11857 LEASE**



N

SCALE—4 INCHES EQUALS 1 MILE

SAN JUAN ENGINEERING COMPANY, FARMINGTON, N. M.