

UNITED STATES  
DEPARTMENT OF THE INTERIOR  
BUREAU OF LAND MANAGEMENT

APPLICATION FOR PERMIT TO DRILL, DEEPEN, OR PLUG BACK

1a. TYPE OF WORK

DRILL ☒

DEEPEN ☐

PLUG BACK ☐

b. TYPE OF WELL

OIL  
WELL ☐

GAS  
WELL ☒

OTHER

SINGLE  
ZONE ☒

MULTIPLE  
ZONE ☐

2. NAME OF OPERATOR

Union Texas Petroleum, INC.

3. ADDRESS OF OPERATOR

PO Box 2120 Houston, Texas 77252-2120

4. LOCATION OF WELL (Report location clearly and in accordance with any State requirements.\*)

At surface

1185 FSL & 1200 FWL  
At proposed prod. zone

14. DISTANCE IN MILES AND DIRECTION FROM NEAREST TOWN OR POST OFFICE\*

3 miles West of Blanco, NM

15. DISTANCE FROM PROPOSED\*

LOCATION TO NEAREST  
PROPERTY OR LEASE LINE, FT.  
(Also to nearest drilg. unit line, if any) 1185

16. NO. OF ACRES IN LEASE

506.79

17. NO. OF ACRES ASSIGNED  
TO THIS WELL

283.18295

18. DISTANCE FROM PROPOSED\*

TO NEAREST WELL, DRILLING, COMPLETED,  
OR APPLIED FOR, ON THIS LEASE, FT. 225'

19. PROPOSED DEPTH

3200'

20. ROTARY OR CABLE TOOLS

Rotary

21. ELEVATIONS (Show whether DF, RT, GR, etc.)

6376 GR

22. APPROX. DATE WORK WILL START\*

May 1, 1990

23.

PROPOSED CASING AND CEMENTING PROGRAM

SIZE OF HOLE	SIZE OF CASING	WEIGHT PER FOOT	SETTING DEPTH
12 1/4	9 5/8	32.3	350
8 3/4	7	23.0	3200

DRILLING OPERATIONS AUTHORIZED ARE

SUBJECT TO QUANTITY OF CEMENT  
ATTACHED  
210sxs 248cuft B  
245 sxs 701cuft 65/35  
100 sxs 157 cuft 50/50

Union Texas Petroleum, INC. wishes to advise that we intend to drill a 12 1/4" hole with spud mud to 350' and set 9 5/8", 32.3#, K-55 ST&C casing to 350' cementing to surface with 210 sxs (248 cu ft) Class B cement with 2% CaCl2. Wait on cement 12 hours. Nipple up and test BOP. Drill 8 3/4" hole out of surface to 3200' with mud. Log well. Set 7", 23.0#, N-80 LT&C production casing to 3200' cementing to surface with 245 sxs (701 cu ft) 65/35 POZ with 12% gel and 12 1/4# gilsonite/sk, tailed by 100 sxs (157 cu ft) 50/50 Poz w/ 4% gel, 6 1/4# gil/sk and 10# salt/sk. Perforate pay section and if necessary acidize and frac with 250,000# sand in 180,000 gal 30# cross linked gel. Clean up well and install standard production equipment. Test well to reserve pit for a period not to exceed 30 days. Connect well to a gathering system.

RECEIVED RECEIVED

JUL 23 1990

AUG 08 1990

IN ABOVE SPACE DESCRIBE PROPOSED PROGRAM: If proposal is to deepen or plug back, give data on present productive zone and proposed new productive zone. If proposal is to drill or deepen directionally, give pertinent data on location, direction, depth, and anticipated production. If proposal is to plug back, give pertinent data on location, direction, depth, and anticipated production. If proposal is to plug back, give pertinent data on location, direction, depth, and anticipated production.

OIL CON. DIV.

MIN. CON. DIV.

DIST. 3

24.

SIGNED

L. White

TITLE

REG PERMIT COORD

DATE 8-23-90

(This space for Federal or State office use)

PERMIT NO.

APPROVAL DATE

APPROVED BY

TITLE

CONDITIONS OF APPROVAL, IF ANY:

NMOCD

JUL 18 1990  
K. AREA MANAGER

Hold C-104 for NSL FNSA + CA

\*See Instructions On Reverse Side

03813314

000000

00000000

000000

State of New Mexico  
Energy, Minerals and Natural Resources Department

OIL CONSERVATION DIVISION

P.O. Box 2088  
Santa Fe, New Mexico 87504-2088

Form C-102  
Revised 1-1-89

RECEIVED  
SPECIAL ROOM

90 MAR 25 AM 11:15

to Appropriate  
District Office  
Lease - 4 copies  
Lease - 3 copies

DISTRICT I  
P.O. Box 1980, Hobbs, NM 88240

DISTRICT II  
P.O. Drawer DD, Artesia, NM 88210

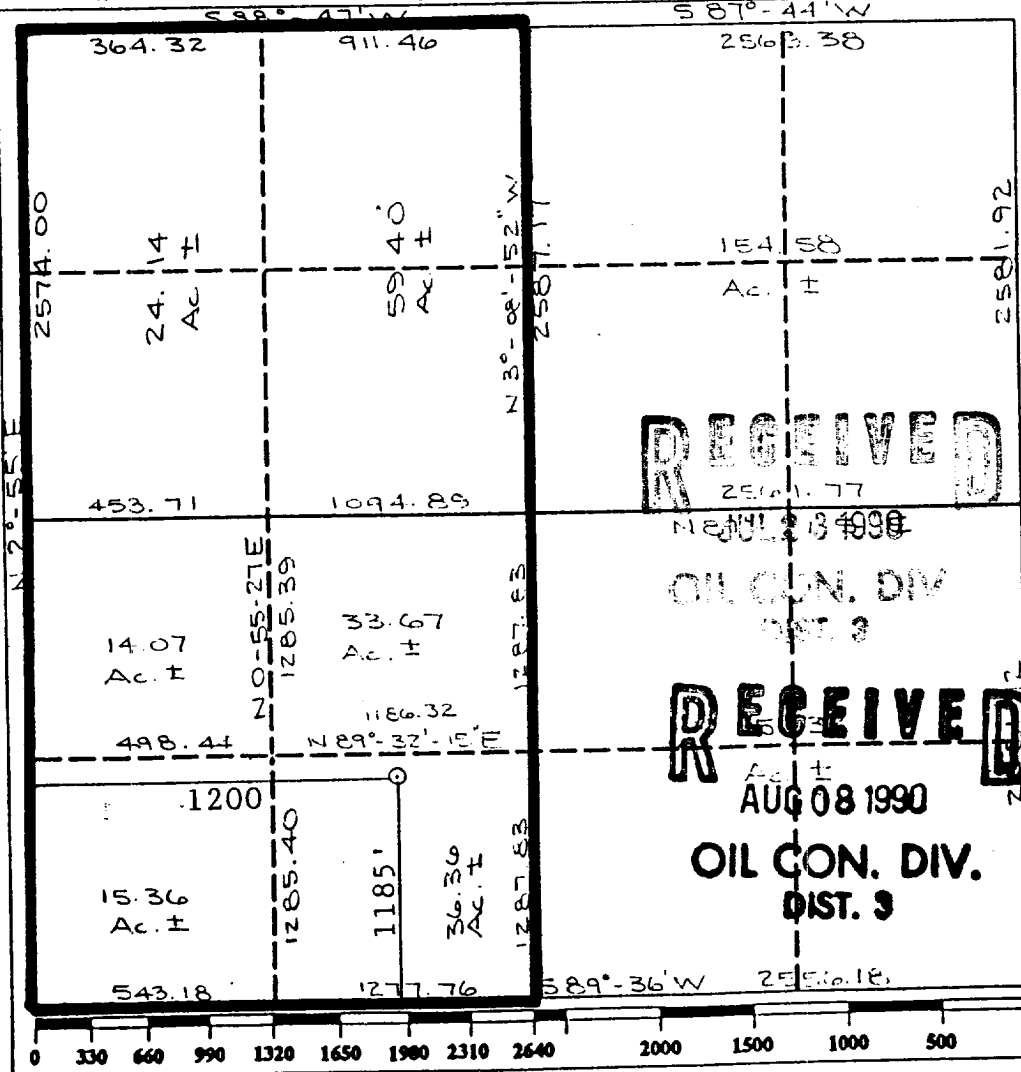
DISTRICT III  
1000 Rio Brazos Rd., Aztec, NM 87410

WELL LOCATION AND ACREAGE DEDICATION PLAT

All Distances must be from the outer boundaries of the section

Operator <b>UNION TEXAS PETROLEUM</b>			Lease <b>PRICHARD FEDERAL</b>		Well No. <b>7</b>
Unit Letter <b>N</b>	Section <b>6</b>	Township <b>29N</b>	Range <b>8W</b>	County <b>NMPM San Juan</b>	
Actual Footage Location of Well: <b>1185</b> feet from the <b>South</b> line and <b>1200</b> feet from the <b>West</b> line					
Ground level Elev. <b>6376'</b>	Producing Formation <b>Fruitland Coal</b>		Pool <b>Basin Fruitland Coal</b>		Dedicated Acreage: <b>183/82.95</b> W/2 Acres

- Outline the acreage dedicated to the subject well by colored pencil or hachure marks on the plat below.
- If more than one lease is dedicated to the well, outline each and identify the ownership thereof (both as to working interest and royalty).
- If more than one lease of different ownership is dedicated to the well, have the interest of all owners been consolidated by communitization, unitization, force-pooling, etc.?  
☐ Yes ☒ No If answer is "yes" type of consolidation \_\_\_\_\_  
If answer is "no" list the owners and tract descriptions which have actually been consolidated. (Use reverse side of this form if necessary.)  
No allowable will be assigned to the well until all interests have been consolidated (by communitization, unitization, forced-pooling, or otherwise) or until a non-standard unit, eliminating such interest, has been approved by the Division.



OPERATOR CERTIFICATION

I hereby certify that the information contained herein is true and complete to the best of my knowledge and belief.

Signature *Ken White*

Printed Name  
**KEN WHITE**

Position  
**REG PERMIT COORD**

Company  
**UNION TEXAS PETROLEUM**

Date  
**3-23-90**

SURVEYOR CERTIFICATION

I hereby certify that the well location shown on this plat was plotted from field notes of actual surveys made by me or under my supervision, and that the same is true and correct to the best of my knowledge and belief.

Date Surveyed

*March 8, 1990*

Signature & Seal of  
Professional Surveyor

*Neil B. Tullis*  
**9672**  
REGISTERED PROFESSIONAL LAND SURVEYOR

Certification No.

Exhibit I

101-56  
101-56  
~~101-56~~  
21-5-22

101-56  
101-56  
101-56  
101-56  
101-56