

UNITED STATES  
DEPARTMENT OF THE INTERIOR  
BUREAU OF LAND MANAGEMENT

APPLICATION FOR PERMIT TO DRILL, DEEPEN, OR PLUG BACK

1a. TYPE OF WORK

DRILL ☒

DEEPEN ☐

PLUG BACK ☐

b. TYPE OF WELL

OIL  
WELL ☐

GAS  
WELL ☒

OTHER

SINGLE  
ZONE ☒

MULTIPLE  
ZONE ☐

2. NAME OF OPERATOR

Amoco Production Co.

3. ADDRESS OF OPERATOR

501 Airport Drive, Farmington, N M 87401

4. LOCATION OF WELL (Report location clearly and in accordance with applicable requirements)

At surface

1570' FNL x 2070' FWL

At proposed prod. zone

Same

14. DISTANCE IN MILES AND DIRECTION FROM NEAREST TOWN OR POST OFFICE

12 miles SE of Blanco, New Mexico

15. DISTANCE FROM PROPOSED\*

LOCATION TO NEAREST

PROPERTY OR LEASE LINE, FT.

(Also to nearest drlg. unit line, if any)

1570'

18. DISTANCE FROM PROPOSED LOCATION\*

TO NEAREST WELL, DRILLING, COMPLETED,

OR APPLIED FOR, ON THIS LEASE, FT.

2,000's

16. NO. OF ACRES IN LEASE

2360

17. NO. OF ACRES ASSIGNED

TO THIS WELL

320 E-312 52

19. PROPOSED DEPTH

7650'

20. ROTARY OR CABLE TOOLS

Rotary

21. ELEVATIONS (Show whether on or off lease)

6397'

GR

DRILLING OPERATIONS AUTHORIZED ARE

SUBJECT TO COMPLIANCE WITH ATTACHED

"GENERAL REQUIREMENTS"

22. APPROX. DATE WORK WILL START\*

As soon as permitted

23. DRILLING OPERATIONS AUTHORIZED ARE

This action is subject to technical and  
procedural review pursuant to 43 CFR 3165.3  
and appeal pursuant to 43 CFR 3165.4.

SIZE OF HOLE	SIZE OF CASING	WEIGHT PER FOOT	SETTING DEPTH	
12-1/4"	9-5/8"	32.3#, H40	300'	354 c.f. Class B
8-3/4"	7"	20#, K55	3410'	648 c.f. 65:35 Class B, tailer
6-1/4"	4-1/2"	10.5#, K55	7650	with 118 c.f. Class B Neat.
				1177 c.f. 50:50 Class B

Amoco proposes to drill the above well to further develop the Basin Dakota reservoir. The well will be drilled to the surface casing point using native mud. The well will then be drilled to TD with a low solids nondispersed mud system. Completion design will be based on open hole logs. Copy of well logs will be filed upon completion. Amoco's standard blowout prevention will be employed; see attached drawing for blowout preventer design. Upon completion the well site will be cleaned and the reserve pit filled and leveled. The gas from this well is dedicated to El Paso Natural Gas Company.

IN ABOVE SPACE DESCRIBE PROPOSED PROGRAM: If proposal is to deepen or plug back, give data on present productive zone and proposed new productive zone. If proposal is to drill or deepen directionally, give pertinent data on subsurface locations and measured and true vertical depths. Give blowout preventer program, if any.

24.

SIGNED

BDS Shaw

Adm. Supervisor

DATE 8-14-85

(This space for Federal or State office use)

RECEIVED

APPROVED  
AS AMENDED

PERMIT NO.

AUG 14 1985

APPROVAL DATE

APPROVED BY

CONDITIONS OF APPROVAL, IF ANY:

OIL CON. DIV.  
DIST. 3

NMCC

\*See Instructions On Reverse Side

AUG 09 1985

/s/ J. Stan McKee

M. MILLENBACH  
AREA MANAGER

**NEW MEXICO OIL CONSERVATION COMMISSION  
WELL LOCATION AND ACREAGE DEDICATION PLAT**

Form C-102  
Supersedes C-128  
Effective 1-1-65

*All distances must be from the outer boundaries of the Section.*

Operator <b>AMOCO PRODUCTION COMPANY</b>		Lease <b>ANNIE L. ELLIOTT "I"</b>		Well No. <b>1</b>
Unit Letter <b>G</b>	Section <b>14</b>	Township <b>29N</b>	Range <b>9W</b>	County <b>San Juan</b>
Actual Footage Location of Well: <b>1605</b> feet from the <b>North</b> line and <b>2100</b> feet from the <b>East</b> line				
Ground Level Elev: <b>6400</b>	Producing Formation <b>Dakota</b>	Pool <b>Basin Dakota</b>	Dedicated Acreage: <b>320-6-312-82</b> Acres	

1. Outline the acreage dedicated to the subject well by colored pencil or hachure marks on the plat below.
2. If more than one lease is dedicated to the well, outline each and identify the ownership thereof (both as to working interest and royalty).
3. If more than one lease of different ownership is dedicated to the well, have the interests of all owners been consolidated by communitization, unitization, force-pooling, etc?

☐ Yes    ☐ No    If answer is "yes," type of consolidation \_\_\_\_\_

If answer is "no," list the owners and tract descriptions which have actually been consolidated. (Use reverse side of this form if necessary.) \_\_\_\_\_

No allowable will be assigned to the well until all interests have been consolidated (by communitization, unitization, forced-pooling, or otherwise) or until a non-standard unit, eliminating such interests, has been approved by the Commission.

**RECEIVED**

**JUL 02 1985**

BUREAU OF LAND MANAGEMENT  
FARMINGTON RESOURCE AREA

Sec. **14**

1605'

2100'

CLIFF

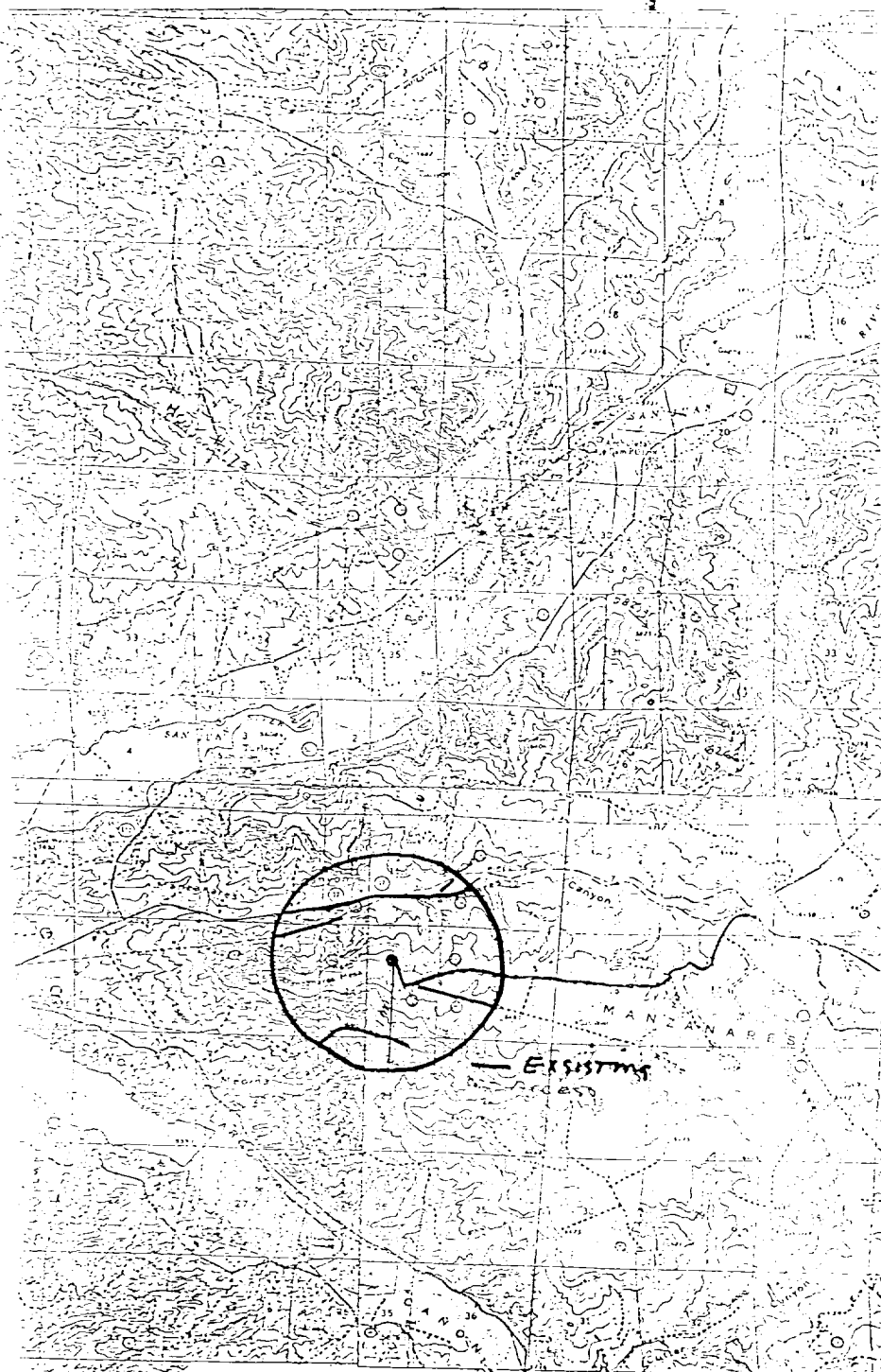
**RECEIVED**

**AUG-14-1985**

**OIL CON. DIV.**

**DIST. 6**

<b>CERTIFICATION</b>	
I hereby certify that the information contained herein is true and complete to the best of my knowledge and belief.	
Name	<b>B. D. Shaw</b>
Position	<b>Adm. Supervisor</b>
Company	<b>Amoco Production Co.</b>
Date	<b>6-26-85</b>
I hereby certify that the well location shown on this plat was plotted from field notes of actual surveys made by me or under my supervision, and that the same is true and correct to the best of my knowledge and belief.	
Date Surveyed	<b>April 26, 1985</b>
Registered Professional Engineer and Land Surveyor	
Certificate No.	<b>2050</b>



Vicinity Map for  
AMOCO PRODUCTION COMPANY #1 ANNIE L. ELLIOTT "I"  
1570'FNL 2073'FEL Sec. 11-T29N-R9W  
SAN JUAN COUNTY, NEW MEXICO

Exhibit "B"