

Submit to Appropriate District Office
 State Lease - 6 copies
 Fee Lease - 5 copies

State of New Mexico
 Energy, Minerals and Natural Resources Department

Form C-101
 Revised 1-1-89

DISTRICT I
 P.O. Box 1980, Hobbs, NM 88240

DISTRICT II
 P.O. Drawer DD, Artesia, NM 88210

DISTRICT III
 1000 Rio Brazos Rd., Aztec, NM 87410

OIL CONSERVATION DIVISION

Santa Fe, New Mexico 87504-2088

RECEIVED

AUG 5 1990

OIL CON. DIV
 DIST. 3

API NO. (assigned by OCD on New Wells)	30-045-28131
5. Indicate Type of Lease	STATE <input type="checkbox"/> FEE <input checked="" type="checkbox"/>
6. State Oil & Gas Lease No.	
7. Lease Name or Unit Agreement Name	Santa Rosa 6
8. Well No.	2 <u>334.14</u>
9. Pool name or Wildcat	Basin Fruitland Coal

APPLICATION FOR PERMIT TO DRILL, DEEPEN OR PLUG BACK

1a. Type of Work:
 DRILL RE-ENTER DEEPEN PLUG BACK

b. Type of Well:
 OIL WELL GAS WELL OTHER
 SINGLE ZONE MULTIPLE ZONE

2. Name of Operator
 Robert L. Bayless

3. Address of Operator
 P.O. Box 168, Farmington, NM 87499

4. Well Location
 Unit Letter N : 1055 Feet From The South Line and 990 Feet From The West Line
 Section 6 Township 29N Range 9W NMPM San Juan County NM

10. Proposed Depth	11. Formation	12. Rotary or C.T.
2255'	Fruitland Coal	Rotary
13. Elevations (Show whether DF, RT, GR, etc.)	14. Kind & Status Plug. Bond	15. Drilling Contractor
5650' GL 5660' RKB		Bayless Drilling
16. Approx. Date Work will start		
ASAP		

17. PROPOSED CASING AND CEMENT PROGRAM

SIZE OF HOLE	SIZE OF CASING	WEIGHT PER FOOT	SETTING DEPTH	SACKS OF CEMENT	EST. TOP
12-1/4"	8-5/8"	24.0#	120'	90/106 ft ³	surface
7-7/8"	4-1/2"	10.5#	2255'	500/729 ft ³	surface/see long-string cementing

Will drill 12-1/4" hole to 120' and set 120' of 8-5/8" 24.0 #/ft J-55 used casing, cementing with 106 ft³ Class B cement, circulated to surface. Will drill 7-7/8" hole to 2255' and run 2255' of 4-1/2" 10.5 #/ft J-55 new casing and cement as per attached longstring cementing guidelines. Circulating medium while drilling will be clear water, natural mud and waterloss control additives. No abnormal pressures or temperatures are anticipated. Will run Induction and Density Logs. Blowout preventer and safety equipment schematics are attached. The gas from this formation is not dedicated to a gas contract.

ESTIMATED TOPS:

Ojo Alamo	- 980'
Kirtland	- 1110'
Fruitland	- 1840'
Pictured Cliffs	- 2173'
Total Depth	- 2255'

IN ABOVE SPACE DESCRIBE PROPOSED PROGRAM: IF PROPOSAL IS TO DEEPEN OR PLUG BACK, GIVE DATA ON PRESENT PRODUCTIVE ZONE AND PROPOSED NEW PRODUCTIVE ZONE. GIVE BLOWOUT PREVENTER PROGRAM, IF ANY.

I hereby certify that the information above is true and complete to the best of my knowledge and belief.

SIGNATURE Kevin H. McCord TITLE Petroleum Engineer DATE 8-14-90

TYPE OR PRINT NAME: Kevin H. McCord TELEPHONE NO 505/326-2651

(This space for State Use)

APPROVED BY Original Signed by FRANK T. CHAYEZ TITLE SUPERVISOR DISTRICT 3 DATE AUG 15 1990

CONDITIONS OF APPROVAL, IF ANY.

APPROVAL EXPIRES 2-15-91
 UNLESS DRILLING IS COMMENCED.
 SPUD NOTICE MUST BE SUBMITTED
 WITHIN 10 DAYS.

R-8898

OIL CONSERVATION DIVISION

P.O. Box 2088
Santa Fe, New Mexico 87504-2088

RECEIVED

AUG 15 1990

Submit to Appropriate District Office
State Lease - 4 copies
Fee Lease - 3 copies

DISTRICT I
P.O. Box 1980, Hobbs, NM 88240

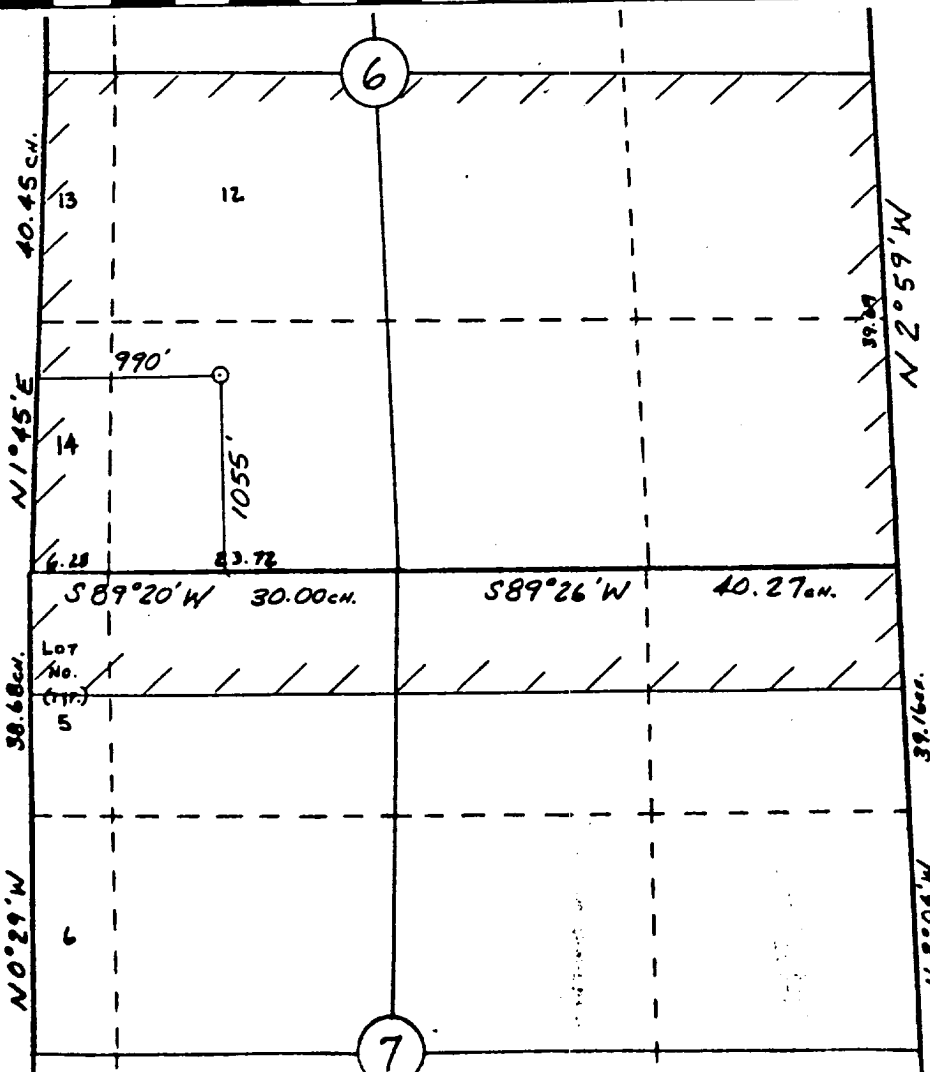
DISTRICT II
P.O. Drawer DD, Artesia, NM 88210

DISTRICT III
1000 Rio Brazos Rd., Aztec, NM 87410

WELL LOCATION AND ACREAGE DEDICATION PLAT
All Distances must be from the outer boundaries of the section

OIL CON. DIV.
DIST. 3

Operator Robert L. Bayless		Lease SANTA ROSA 6		Well No. 2
Unit Letter N	Section 6	Township 29 N	Range 9 W	County San Juan
Actual Footage Location of Well: 1055 feet from the South line and 990 feet from the West line				
Ground level Elev. 5650	Producing Formation Fruitland Coal	Pool Basin Fruitland Coal	Dedicated Acreage: 334.146 Acres	
<p>1. Outline the acreage dedicated to the subject well by colored pencil or hatchure marks on the plat below.</p> <p>2. If more than one lease is dedicated to the well, outline each and identify the ownership thereof (both as to working interest and royalty).</p> <p>3. If more than one lease of different ownership is dedicated to the well, have the interest of all owners been consolidated by communitization, unitization, force-pooling, etc.? <input type="checkbox"/> Yes <input type="checkbox"/> No If answer is "yes" type of consolidation _____ If answer is "no" list the owners and tract descriptions which have actually been consolidated. (Use reverse side of this form if necessary.) No allowable will be assigned to the well until all interests have been consolidated (by communitization, unitization, forced-pooling, or otherwise) or until a non-standard unit, eliminating such interest, has been approved by the Division.</p>				

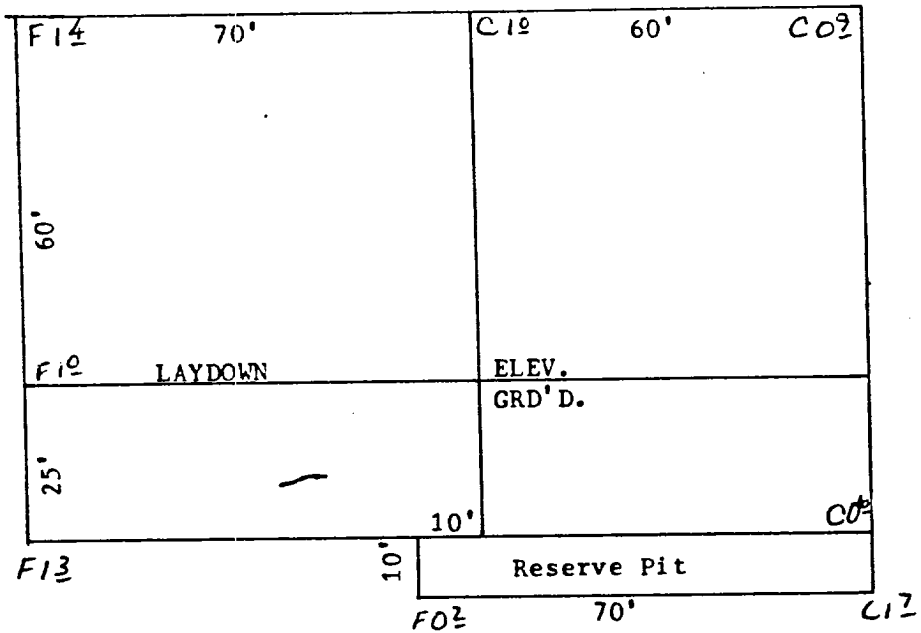


OPERATOR CERTIFICATION
I hereby certify that the information contained herein is true and complete to the best of my knowledge and belief.

Signature: *Kevin H. McCord*
Printed Name: **Kevin H. McCord**
Position: **Petroleum Engineer**
Company: **Robert L. Bayless**
Date: **8/14/90**

SURVEYOR CERTIFICATION
I hereby certify that the well location shown on this plat was plotted from field notes of actual surveys made by me or under my supervision, and that the same is true and correct to the best of my knowledge and belief.
Date Surveyed: **8-10-90**
Date Surveyed: **William E. Mahanke II**
Signature & Seal of Professional Surveyor
Professional Surveyor
#8466
NEW MEXICO
REGISTERED PROFESSIONAL LAND SURVEYOR

Robert L. Bayless
 Santa Rosa #6-2
 1055' FSL & 990' FWL
 Sec. 6, T29N, R9W
 San Juan Co. NM



SCALE: 1"=30'

A-A' Vert.: 1" = 30' Horiz.: 1" = 100' C/L

5660'						
5650'						

B-B'

5660'						
5650'						

C-C'

5660'						
5650'						

Palmdale

Canyon

Robert L. Bayless
Santa Rosa #16-2
1055' FSL & 990' FWL
Sec. 6, T29N, R9W
San Juan Co. NM

TANKS

Canyon

Canyon

CITIZENS

SAN

DIVERSION
DAM

JUAN

RIVER

