

District I  
1625 N. French Dr., Hobbs, NM 88240  
District II  
811 South First, Artesia, NM 88210  
District III  
1000 Rio Brazos Road, Aztec, NM 87410  
District IV  
2040 South Pacheco, Santa Fe, NM 87505

State of New Mexico  
Energy Minerals and Natural Resources

Oil Conservation Division  
2040 South Pacheco  
Santa Fe, NM 87505

Form C-101  
Revised March 17, 1999

Submit to appropriate District Office  
State Lease - 6 Copies  
Fee Lease - 5 Copies

☐ AMENDED REPORT

**APPLICATION FOR PERMIT TO DRILL, RE-ENTER, DEEPEN, PLUGBACK, OR ADD A ZONE**

<sup>1</sup> Operator Name and Address Conoco Inc., 10 Desta Drive, Suite 649W, Midland, TX 79705		<sup>2</sup> OGRID Number 005073
<sup>3</sup> Property Code 003276 3277	<sup>5</sup> Property Name State Com Q	<sup>4</sup> API Number 30 - <del>3045</del> = 30478
		<sup>6</sup> Well No. 13M

**<sup>7</sup> Surface Location**

UL or lot no.	Section	Township	Range	Lot Idn	Feet from the	North/South line	Feet from the	East/West line	County
P	36	29N	8W		795	South	780	East	San Juan

**<sup>8</sup> Proposed Bottom Hole Location If Different From Surface**

UL or lot no.	Section	Township	Range	Lot Idn	Feet from the	North/South line	Feet from the	East/West line	County

**<sup>9</sup> Proposed Pool 1**

Basin Dakota

**<sup>10</sup> Proposed Pool 2**

<sup>11</sup> Work Type Code N	<sup>12</sup> Well Type Code G	<sup>13</sup> Cable/Rotary R	<sup>14</sup> Lease Type Code S	<sup>15</sup> Ground Level Elevation 6440'
<sup>16</sup> Multiple No	<sup>17</sup> Proposed Depth 7535'	<sup>18</sup> Formation Dakota	<sup>19</sup> Contractor NA	<sup>20</sup> Spud Date 11/15/00

**<sup>21</sup> Proposed Casing and Cement Program**

Hole Size	Casing Size	Casing weight/foot	Setting Depth	Sacks of Cement	Estimated TOC
12-1/2"	J-55, 9-5/8"	36#	250'	124	Surface
8-3/4"	J-55, 7"	20#	3750'	527	Surface
6-1/4"	J-55, 4-1/2"	10.5#	7535' -	509	3650'

**22** Describe the proposed program. If this application is to DEEPEN or PLUG BACK, give the data on the present productive zone and proposed new productive zone. Describe the blowout prevention program, if any. Use additional sheets if necessary.

It is proposed to drill a vertical wellbore to the Basin Dakota Pool. The well will be drilled and equipped according to the following attachments.

1. Well location and acreage dedication plat (C-102).
2. Proposed Well Plan Outline
3. Cementing Program
4. BOP/Choke Diagram

**23** I hereby certify that the information given above is true and complete to the best of my knowledge and belief.

Signature: *Kimberly Southall*

Printed name: Kimberly Southall

Title: Analyst

Date: 11/10/00

Phone: 915/686-5565

**OIL CONSERVATION DIVISION**

Approved by: *[Signature]*

Title: **DEPUTY OIL & GAS ENGINEER**

Approval Date: **NOV 16 2000**

Expiration Date: **NOV 16 2001**

Conditions of Approval:

Attached ☐

District I  
PO Box 1980, Hobbs, NM 88241-1980

District II  
PO Drawer DD, Artesia, NM 88211-0719

District III  
1000 Rio Brazos Rd., Aztec, NM 87410

District IV  
PO Box 2088, Santa Fe, NM 87504-2088

State of New Mexico  
Energy, Minerals & Natural Resources Department

OIL CONSERVATION DIVISION  
PO Box 2088  
Santa Fe, NM 87504-2088

Form C-102  
Revised February 21, 1994  
Instructions on back  
Submit to Appropriate District Office  
State Lease - 4 Copies  
Fee Lease - 3 Copies

☐ AMENDED REPORT

### WELL LOCATION AND ACREAGE DEDICATION PLAT

1 API Number <b>30-045-30428</b>		2 Pool Code <b>71599</b>		3 Pool Name <b>BASIN DAKOTA</b>	
4 Property Code <b>003276 3277</b>		5 Property Name <b>STATE COM Q</b>			6 Well Number <b>13M</b>
7 OGRID No. <b>005073</b>		8 Operator Name <b>CONOCO, INC.</b>			9 Elevation <b>6440</b>



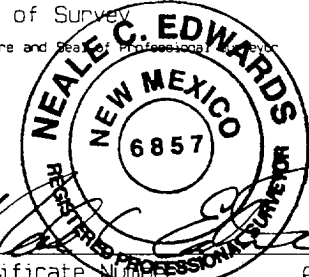
#### 10 Surface Location

U. or lot no.	Section	Township	Range	Lot Idn	Feet from the	North/South line	Feet from the	East/West line	County
<b>P</b>	<b>36</b>	<b>29N</b>	<b>8W</b>		<b>795</b>	<b>SOUTH</b>	<b>780</b>	<b>EAST</b>	<b>SAN JUAN</b>

#### 11 Bottom Hole Location If Different From Surface

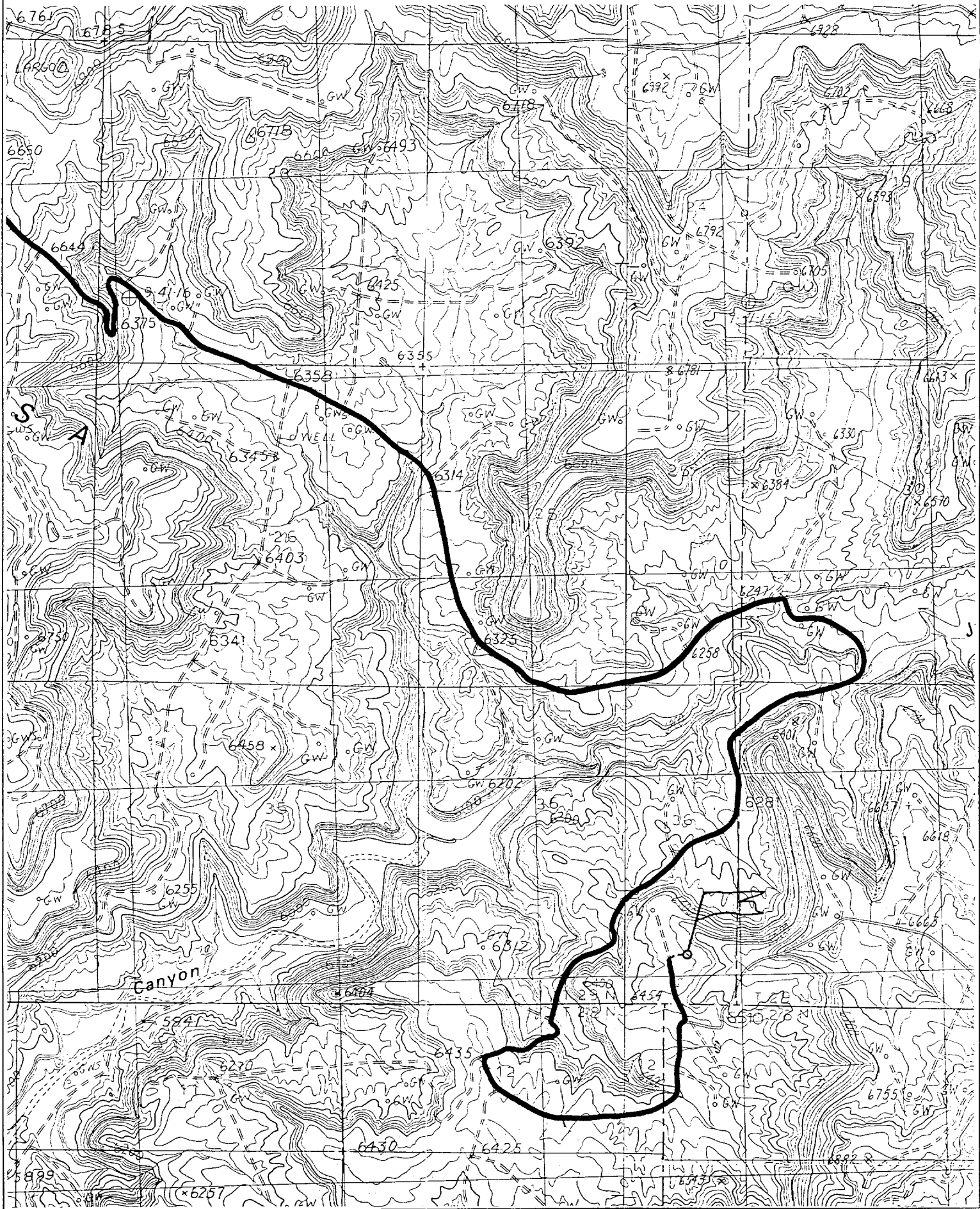
U. or lot no.	Section	Township	Range	Lot Idn	Feet from the	North/South line	Feet from the	East/West line	County
12 Dedicated Acres <b>320 E/2</b>		13 Joint or Infill		14 Consolidation Code		15 Order No.			

NO ALLOWABLE WILL BE ASSIGNED TO THIS COMPLETION UNTIL ALL INTERESTS HAVE BEEN CONSOLIDATED OR A NON-STANDARD UNIT HAS BEEN APPROVED BY THE DIVISION

<div>16</div> <div>5184.30'</div> <div>5258.88'</div> <div>36</div> <div>5160.54'</div> <div>795'</div> <div>780'</div>	<div>17 OPERATOR CERTIFICATION</div> <div>I hereby certify that the information contained herein is true and complete to the best of my knowledge and belief.</div> <div></div> <div>Signature</div> <div>JoAnn Johnson</div> <div>Printed Name</div> <div>Sr. Property Analyst</div> <div>Title</div> <div>11-8-00</div> <div>Date</div> <div>18 SURVEYOR CERTIFICATION</div> <div>I hereby certify that the well location shown on this plat was plotted from field notes of actual surveys made by me or under my supervision, and that the same is true and correct to the best of my belief.</div> <div>OCTOBER 10, 2000</div> <div>Date of Survey</div> <div></div> <div>Signature and Seal of Professional Surveyor</div> <div></div> <div>Certificate Number</div> <div>6857</div>	
---	---	--

CONOCO, INC. STATE COM Q #13M

795' FSL & 780' FEL, SECTION 36, T29N, R8W, N.M.P.M.  
SAN JUAN COUNTY, NEW MEXICO



# BOP SPECIFICATIONS

