

UNITED STATES  
DEPARTMENT OF THE INTERIOR  
GEOLOGICAL SURVEY

30-039-22651

## APPLICATION FOR PERMIT TO DRILL, DEEPEN, OR PLUG BACK

## 1a. TYPE OF WORK

DRILL ☒DEEPEN ☐PLUG BACK ☐

## b. TYPE OF WELL

OIL  
WELL ☐GAS  
WELL ☒

OTHER

SINGLE  
ZONE ☒MULTIPLE  
ZONE ☐

## 2. NAME OF OPERATOR

El Paso Natural Gas Company

## 3. ADDRESS OF OPERATOR

PO Box 289, Farmington, NM 87401

## 4. LOCATION OF WELL (Report location clearly and in accordance with any State requirements.)\*

At surface

1535'N, 850'W

At proposed prod. zone

## 14. DISTANCE IN MILES AND DIRECTION FROM NEAREST TOWN OR POST OFFICE\*

5.5 miles NE of Navajo Dam, NM

## 15. DISTANCE FROM PROPOSED\*

LOCATION TO NEAREST  
PROPERTY OR LEASE LINE, FT.  
(Also to nearest drilg. unit line, if any)

850'

## 16. NO. OF ACRES IN LEASE

unit

## 18. DISTANCE FROM PROPOSED LOCATION\*

TO NEAREST WELL, DRILLING, COMPLETED,  
OR APPLIED FOR, ON THIS LEASE, FT.

2300'

## 19. PROPOSED DEPTH

5805'

17. NO. OF ACRES ASSIGNED  
TO THIS WELL

1320

## 20. ROTARY OR CABLE TOOLS

Rotary

## 21. ELEVATIONS (Show whether DF, RT, GR, etc.)

6221' GL

## 22. APPROX. DATE WORK WILL START\*

## 23.

## PROPOSED CASING AND CEMENTING PROGRAM

SIZE OF HOLE	SIZE OF CASING	WEIGHT PER FOOT	SETTING DEPTH	QUANTITY OF CEMENT
13 3/4"	9 5/8"	36.0#	200'	224 cu. ft. to calculate
8 3/4"	7"	20.0#	3445'	424 cu. ft. to calculate
6 1/4"	4 1/2" liner	10.5#	3295-5805'	438 cu. ft. to calculate

Selectively perforate and sandwater fracture the Mesa Verde formation.

A 3000 psi WP and 6000 psi test double gate preventer equipped with blind and pipe rams will be used for blow out prevention on this well.

This gas is dedicated.

This well is subject to administrative  
approval under 30 CFR 290.DRILLING OPERATIONS AUTHORIZED ARE  
SUBJECT TO THE TERMS OF THE ATTACHED  
PERMIT.

The W/2 of Section 11 is dedicated to this well.

RECEIVED

NOV 7 1980

U. S. GEOLOGICAL SURVEY  
FARMINGTON, N. M.

IN ABOVE SPACE DESCRIBE PROPOSED PROGRAM: If proposal is to deepen or plug back, give data on present productive zone and proposed new productive zone. If proposal is to drill or deepen directionally, give pertinent data on subsurface locations and measured and true vertical depths. Give blowout preventer program, if any.

## 24.

SIGNED

S. G. Busch

TITLE

Drilling Clerk

DATE

11-3-80

(This space for Federal or State office use)

PERMIT NO.

APPROVAL DATE

APPROVED BY

CONDITIONS OF APPROVAL, IF ANY

TITLE

DATE

\*See Instructions On Reverse Side

All distances must be from the outer boundaries of the Section.

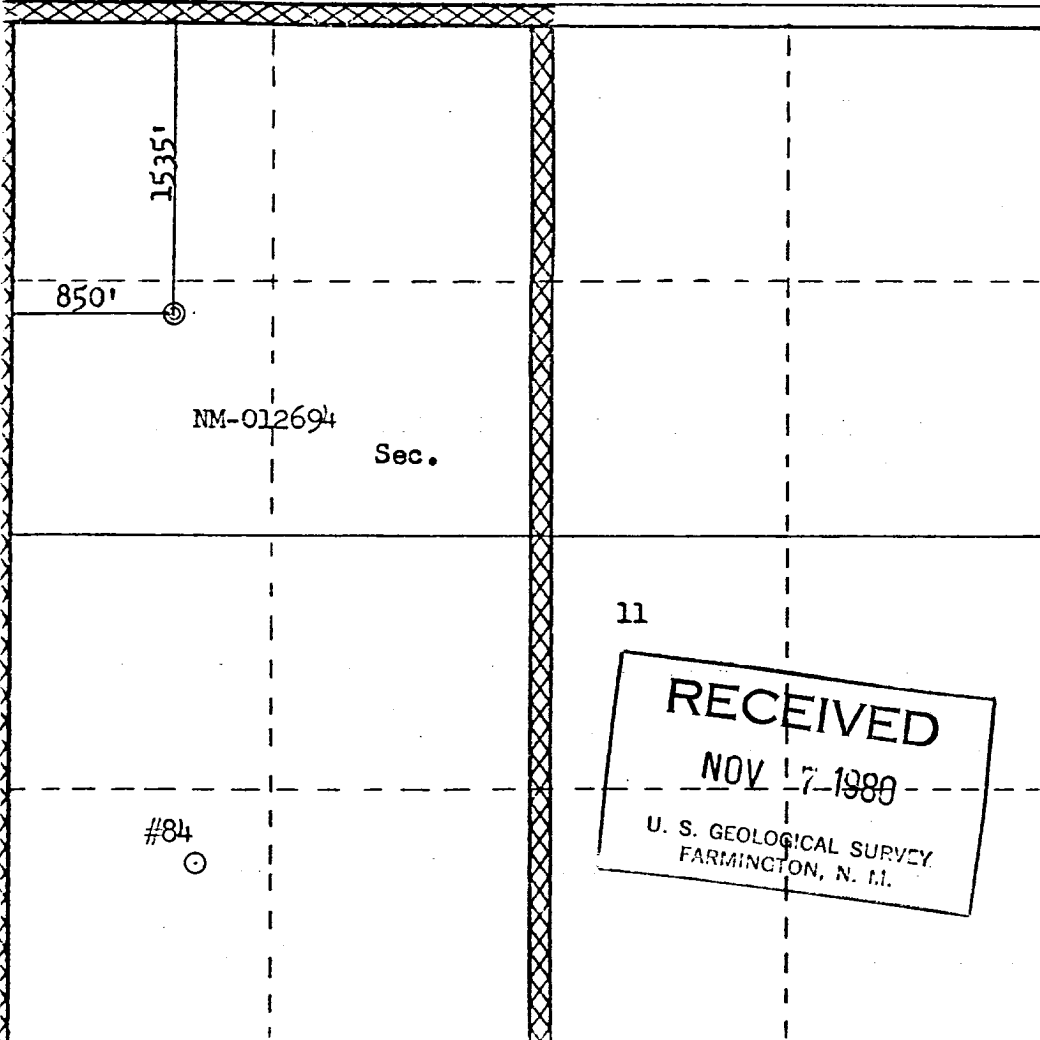
Operator <b>EL PASO NATURAL GAS COMPANY</b>			Lease <b>SAN JUAN 30-6 UNIT (NM-012694)</b>		Well No. <b>84A</b>
Unit Letter <b>E</b>	Section <b>11</b>	Township <b>30N</b>	Range <b>7W</b>	County <b>Rio Arriba</b>	
Actual Footage Location of Well: <b>1535</b> feet from the <b>North</b> line and <b>850</b> feet from the <b>West</b> line					
Ground Level Elev: <b>6221</b>	Producing Formation <b>MESA VERDE</b>		Pool <b>BLANCO MESA VERDE</b>	Dedicated Acreage: <b>320.00</b> Acres	

1. Outline the acreage dedicated to the subject well by colored pencil or hachure marks on the plat below.
2. If more than one lease is dedicated to the well, outline each and identify the ownership thereof (both as to working interest and royalty).
3. If more than one lease of different ownership is dedicated to the well, have the interests of all owners been consolidated by communitization, unitization, force-pooling, etc?

☒ Yes ☐ No If answer is "yes," type of consolidation Unitization

If answer is "no," list the owners and tract descriptions which have actually been consolidated. (Use reverse side of this form if necessary.)

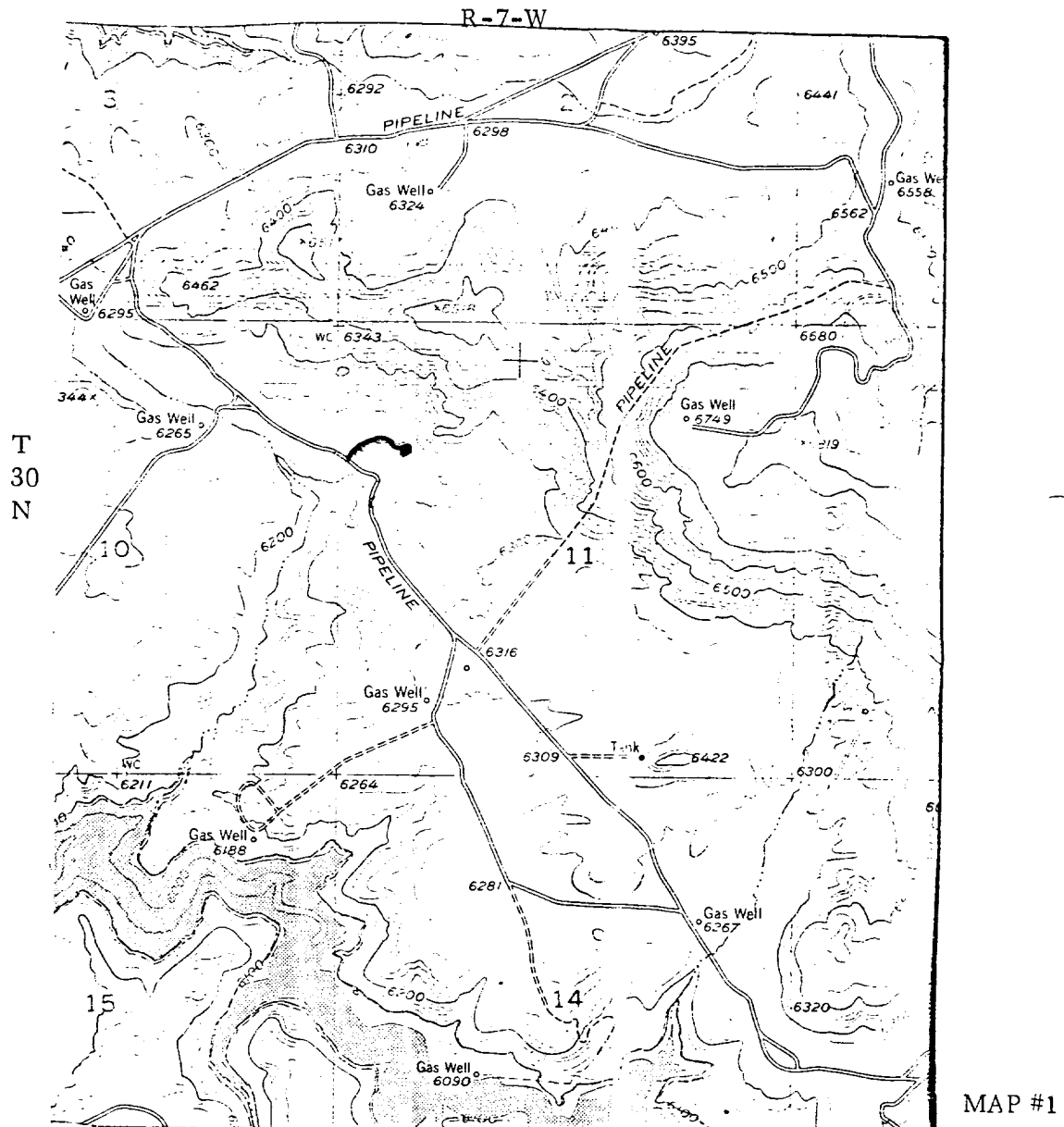
No allowable will be assigned to the well until all interests have been consolidated (by communitization, unitization, forced-pooling, or otherwise) or until a non-standard unit, eliminating such interests, has been approved by the Commission.



Scale: 1"=1000'

CERTIFICATION	
I hereby certify that the information contained herein is true and complete to the best of my knowledge and belief.	
<i>A. G. Luico</i>	
Name	Drilling Clerk
Position	El Paso Natural Gas Co.
Completed	November 30 1980
Date	FEB 11 1981
OIL CON. COM. DIST. 3	
I hereby certify that the well location shown on this plat was plotted from field notes of actual surveys made by me or under my supervision, and that the same is true and correct to the best of my knowledge and belief.	
Date Surveyed	August 20, 1980
Registered Professional Engineer and Land Surveyor	<i>Fred B. Kerr Jr.</i>
Certificate No.	39508

EL PASO NATURAL GAS COMPANY  
San Juan 30-6 Unit #84A  
NW 11-30-7



LEGEND OF RIGHT-OF-WAYS

EXISTING ROADS

EXISTING PIPELINES

EXISTING ROAD & PIPELINE

PROPOSED ROADS

PROPOSED PIPELINES

PROPOSED ROAD & PIPELINE

